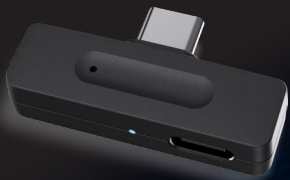


StarLink Edge LE Adapter

User Guide





Connect & Go

with the **StarLink Edge LE Adapter**



Compatible with:
Starkey Low Energy (LE) Audio hearing aids



Table of Contents:

1. Overview	5
2. Pairing	6-9
3. Other functions	10-11
4. FAQ	12-16

Connect and Go—StarLink Edge LE Adapter

Get ready to experience hands-free, high-quality Bluetooth® LE Audio streaming—wherever, whenever—with your new Starlink Edge LE Adapter.

It's never been easier to connect your Starkey LE Audio hearing aids to your compatible phone, tablet or computer *and* go. Use this helpful guide to get to know your new StarLink Edge LE adapter and start enjoying its streaming capabilities.

It starts now, with the StarLink Edge LE Adapter.

Hearing aids must support LE Audio to work with the StarLink Edge LE Adapter. Please note that most phones and tablets with a 3.5mm audio jack will not work with this adapter.

Pairing your StarLink Edge LE Adapter

1. Connecting the adapter to your host device

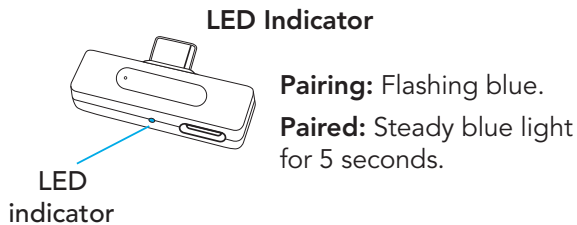


Plug the StarLink Edge LE Adapter into the USB-C port of your host device (phone, tablet or PC).

The adapter will automatically power on and enter pairing mode for initial use (if no existing pairing is found).

Pairing mode is indicated by the LED indicator on the adapter flashing blue.

If you do not see the flashing blue LED light, reset the StarLink Edge LE Adapter by using a thin pointed object into the reset pin hole until the LED indicator light flashes blue.

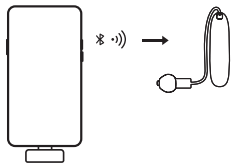


LED Indicator

Pairing: Flashing blue.

Paired: Steady blue light for 5 seconds.

2. Pairing your LE Audio hearing aids



In pairing mode, the LED indicator on the adapter will flash blue.

Turn your hearing aids

OFF and then **ON** to

activate pairing mode. The LED on the adapter turns solid blue for 5 seconds, then off when paired.

Reconnect: Re-insert adapter if connection is lost.

NOTE: Some user controls on your hearing device(s) might not function with the adapter.

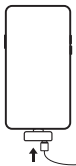
Use your host device to accept/end calls.

You are now ready to stream audio or make hands-free calls with the StarLink Edge LE Adapter.

TIP: *The StarLink Edge LE Adapter stays paired to the hearing aids even when it is unplugged and connected to a different phone, tablet, or PC. You do not need to re-pair it each time. The adapter can only be paired with one set of hearing aids at a time.*

Other functions

Charging your phone or tablet via the StarLink Edge LE Adapter



Connect your power charging cable into the adapter to charge the phone/ tablet. Please note that USB data transfer is

not available while using the adapter. Charging times may vary.

Resetting and clearing the pairing of the StarLink Edge LE Adapter



Make sure the adapter is plugged into a phone, tablet or PC so that it is powered on.

Use a pointy tool to press the system reset button until the

LED starts flashing blue. This indicates that the adapter is in pairing mode, ready to pair with a new device.

Question	Solution
Which types of devices are compatible with the StarLink Edge LE Adapter?	The StarLink Edge LE Adapter enables audio streaming with hearing aids, ear buds and other wireless audio devices that support LE Audio.
	The adapter is designed primarily for use with Android phones and tablets as well as PCs equipped with a USB-C connection.
	Many devices with a 3.5 mm audio jack may not function with the adapter, since audio is often routed through the jack port instead of the USB-C connection.

Question	Solution
My device does not have a USB-C port.	You can plug the StarLink Edge LE Adapter into a USB adapter that fits your phone, tablet or PC, such as a USB-C to USB-A adapter. However, not every third-party adapter is guaranteed to work with the StarLink Edge LE Adapter.

Question	Solution
Can I answer and end calls by either using the push buttons or tapping on my hearing aids?	You must accept or end calls via your phone, tablet or PC.
	When the adapter is plugged into your device, managing calls using buttons or taps on your hearing aids is not supported.
	While audio or calls are streaming, the buttons on your hearing aids will control the streaming volume (if this feature has been configured by your hearing care professional).

Question	Solution
The StarLink Edge LE Adapter is connected to my phone, tablet or PC, but there's no sound.	Make sure the volume is increased on both your source device and your hearing aids.
	Confirm that the correct output is selected for audio on your device (e.g. "Wired headphones" on phone/tablet and "StarLink Edge LE Adapter" on PC).
	Unplug the StarLink Edge LE Adapter from your device's USB-C port and plug it into the same port to restart the adapter.
	If the issue persists, then reset and pair the adapter again.



Starkey shall not be responsible or accept any liability for damage to the Easy LE Adapter or any third-party device arising from a user's negligence, tampering, misuse, mishandling, or alteration of the Easy LE Adapter.

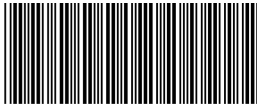
The Easy LE Adapter is manufactured by Minami Acoustics Limited.

The Bluetooth® word mark and logos are registered trademarks owned by Bluetooth SIG, Inc. Any use of such marks by Demant and Minami Acoustics Limited is under license. Android is a trademark of Google LLC. Other trademarks and trade names are those of their respective owners.

Starkey logo and StarLink are trademarks of Starkey Laboratories, Inc.

©2026 Starkey Laboratories, Inc. All Rights Reserved.
P00023318 5/26 BKL3297-00-EN-ST

Patent: www.starkey.com/patents



P00023318