

## QUICKTIP

# Rechargeable Initial Fit Protocol



## Initial Setup/Charging

- 1 Thrive platform 2.4 GHz Rechargeable hearing aids can only be programmed wirelessly via the 2.4 GHz or NOAHLINK Wireless programmer. Hearing aids will ship with enough battery life to complete initial hearing aid programming, but not enough for a full day of use.
- 2 Place hearing aids in the charger prior to the initial fitting to ensure there is enough battery life for use.

**NOTE:** *If the hearing aid battery charge is too low, a low battery warning will appear when reading devices. If this occurs, the fitting session can proceed, but a firmware update (if available) cannot. Fifteen minutes either in the Premium Standard or Premium Custom Charger or a 7-minute turbo charge using the Mini Turbo Charger is enough to proceed with a firmware update. The Premium Standard Charger and Premium Custom Charger have an on-board battery which allows charging of the hearing aids to occur away from a power source.*

## Get Started

- 1 Launch **Inspire X**.
- 2 On the **Get Started** screen, select **View Programmers**, then choose the 2.4 GHz wireless programmer and select **OK**.  
**NOTE:** *Expected range for wireless programming is 30 feet.*
- 3 Select the **check box** next to the hearing aid(s) to be programmed.
- 4 Select **Read Device Settings** to begin a new fitting or for a follow-up fitting session using the current settings in the hearing aids. Select **Load a Previous Session** to retrieve a previously saved session.
- 5 Select **Start**.



## Initial Fit and Auto Path

Initial Fit launches automatically when programming new hearing aids.

- 1 Select the appropriate **Acoustic Options**, then select **OK**.
- 2 Select the appropriate **Experience with Amplification**.  
[Fig. 1]

*Refer to the Experience Manager QuickTIP for additional information.*

- 3 Insert hearing aids into the patient's ears, reduce all sources of noise, then select **Begin** to run the Auto Path.

**NOTE:** *If hearing aid programming is conducted prior to the fitting appointment, re-run the Feedback Cancellor with the hearing aids in the patient's ears.*

- 4 Review the Auto Path results screen. Select **Restart** if status is incomplete for any steps, or select **Close** to continue.

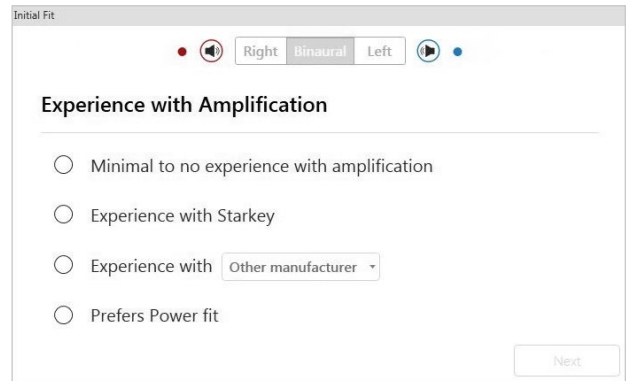


Figure 1

## User Controls

The User Control Configuration demo box will appear upon initial programming. Select **Show Demo** for demonstration of user control configuration options, or select **Don't show again** and **Close**.

- 1 Drag any user control you wish to enable from the left and drop it on a gesture on the right. User control options include: Hearing Aid Volume, Memory, Tinnitus Level, Mute, Accessory Start/Stop, Accessory Volume, Manual Alert, Power Off, Thrive Assistant, and Edge Mode. Gesture options include: Short Press, Push & Hold and Double Tap. [Fig. 2]
- 2 Rechargeable hearing aids do not have battery doors. To provide patients with the ability to power off their Rechargeable hearing aid(s) while not in use, the Push & Hold user control can be configured to function as a "Power Off" option.
- 3 Rechargeable hearing aid(s) will ship with the "Power Off" user control in the Push & Hold position.

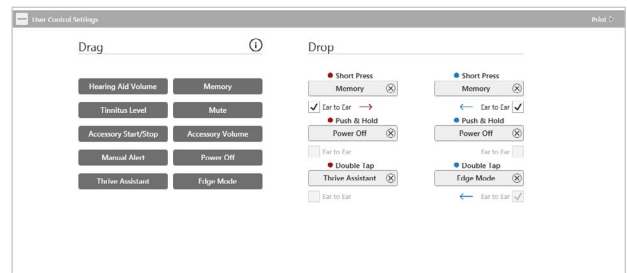


Figure 2

### **NOTE:**

- There is no "Ear-to-Ear" user control syncing for the Power Off option.
- Thrive Assistant, Manual Alert and Edge Mode are only available for select Thrive platform 2.4 GHz products.
- Double Tap is only available for AI products.
- An alert icon will appear if the tinnitus user control is enabled but the tinnitus stimulus is disabled.

## QuickFit and Fine Tuning

- 1 Select **QuickFit** on the left navigation bar to make global fitting adjustments. [Fig. 3]
- 2 Select the **Memory drop-down arrows** on the memory bar to program memories.
- 3 Select **Fine Tuning** on the left navigation bar or from the bottom of the QuickFit screen to make detailed fitting adjustments of individual channels and input levels.
- 4 Select **Tables** or **Sliders** to choose desired view for adjustments.
- 5 Select **+** to expand Low, Mid, High and/or Ultra channel groups.
- 6 Select **channels and input levels** to adjust, then select up and/or down arrows to make adjustments.

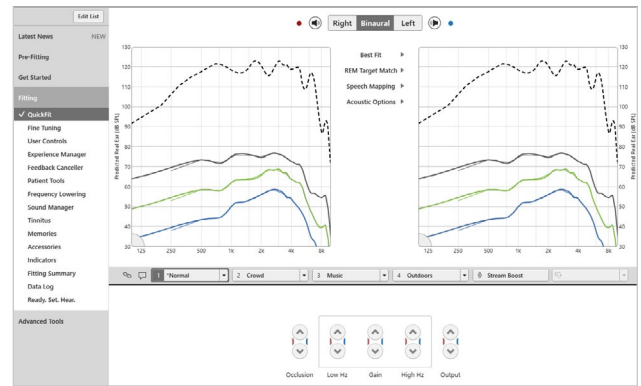


Figure 3

## Patient Tools

Select **Remote Programming** under Patient Tools to enable remote programming. Click the **Check Box** next to Remote Programming. Then click **Accept** after reviewing the disclosure notice with your patient. Next, click the code generator icon to generate a unique code for your patient to enter into their Thrive Hearing Control app to allow access for Remote Programming. [Fig. 4]

Select **Auto Fall Alert** under Patient Tools to change the Fall Detection Sensitivity and complete the Fall Risk Screening with your patient. Please refer to the Fall Alert QuickTIPs for full instructions on completing setup and use. Please note Auto Fall Alert is only available for select Thrive platform 2.4 GHz hearing aids. [Fig. 5]

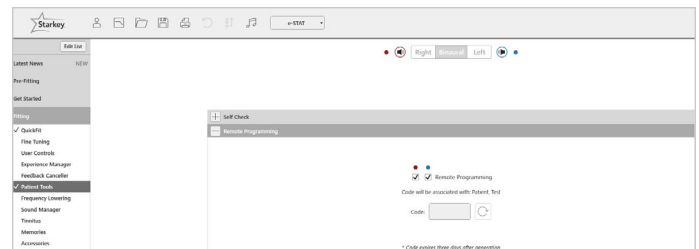


Figure 4

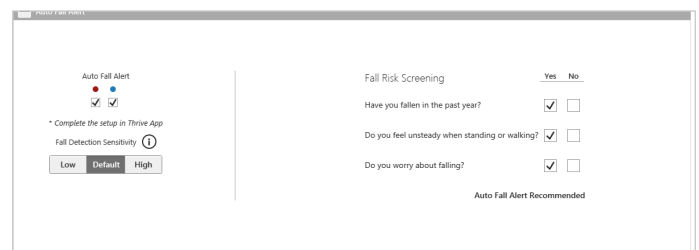


Figure 5

## Additional Adjustments

Refer to the QuickTIP library for information on various features, such as Sound Manager, Tinnitus and Frequency Lowering.

## Memories and Speech Indicators

Select **Memories** on left navigation bar or select **Memories** from the middle of all fitting screens.

- 1 Select drop-down arrows to extend the **Memories** menu, then select the desired memories to program.
- 2 If configuring a **Music Memory**, refer to the Music Memory QuickTIP.
- 3 **Speech Indicators** can be customized. (see *Indicators on next page*).

## Memories and Speech Indicators (Continued)

- The memory bar will default to a display of the selected environment (for example, “Outdoors”). Select the **speech bubble** to change the display to the speech indicator that has been configured (for example, the Outdoors memory will display as “Golf”). [Fig. 6]

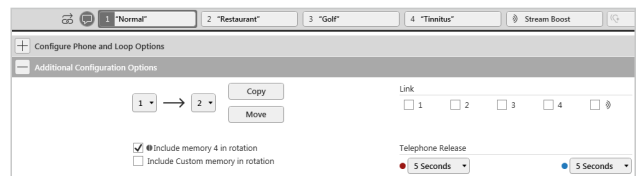


Figure 6

## Accessories

Select **Accessories** on the left navigation bar to configure 2.4 GHz accessories. [Fig. 7] Follow pairing instructions via the information icon to pair within Inspire X. Once paired, adjust the Hearing Aid Mic While Streaming for the Streaming Accessories and the Favorite Button Configuration for the Remote.

**NOTE:** Because rechargeable hearing aids do not have battery doors, inserting the hearing aids into the Charger or Mini Turbo Charger and then removing them is necessary to put the hearing aids into pairing mode when pairing with accessories outside of Inspire X.

[Refer to the 2.4 GHz wireless accessories QuickTIPs for additional information.](#)

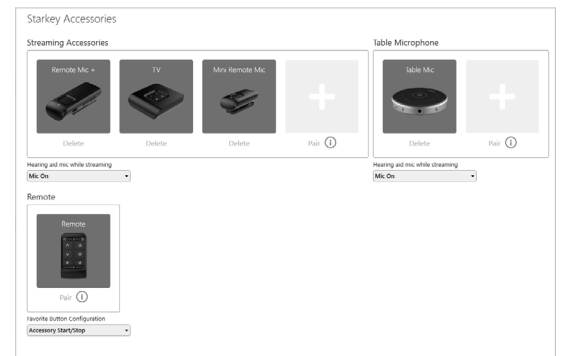


Figure 7

## Indicators

Select **Indicators** on the left navigation bar.

- Select or de-select check boxes to enable or disable indicators.  
**NOTE:** Volume indicators may be enabled or disabled on an individual basis.
- Select **Adjust All Indicators** to increase or decrease volume level for all Tone or Speech/Chimes indicators in 5 dB increments, or to change the voice language.
- Select the **Individual Indicator** names to adjust the volume level and stimulus type for individual indicators. Select the hearing aid icon to play the indicator directly through the hearing aids or the computer icon to play the indicator through the loudspeaker for demonstration purposes.
- Select **Power-Off Sound** to adjust the volume level of the descending Chimes.
- Select **Memory/Home** to configure Speech Indicators, which are environment-specific voice indicators. As memories are enabled, the default indicator will match the selected environment (for example, the user will hear “Outdoors” when switching into the Outdoors memory). Select the drop-down arrow under **Stimulus** to change the speech indicator (for example, the user has the option to hear “Golf” when switching into the Outdoors memory). [Fig. 8]

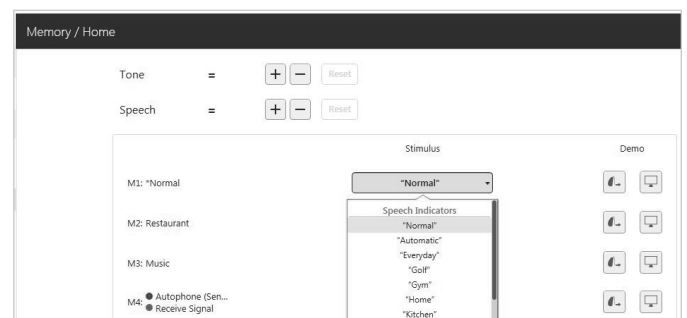


Figure 8

## Fitting Summary

Select **Fitting Summary** on the left navigation bar. [Fig. 9]

Select **details** to change the status of features, if necessary. Details are hyperlinks and will navigate to the Feature Names adjustment screens.

Under **Status**, select the desired setting in the drop down for Auto On/Off. When turned on, Auto On/Off allows the hearing aids to automatically go into sleep mode when not in use. This feature is available for AI hearing aids only.

Select **Print** to generate a Fitting Report, a Data Log Report or a personalized Device Guide that displays the volume adjustments, memories and speech indicators that have been enabled. The Device Guide can be translated into several languages from the Print screen.

Memory	1	2	3	4	5
Details	Frequency Lowering	Disabled	Disabled	Disabled	Disabled
	Directionality	Adaptive	Adaptive	Adaptive	Adaptive
Details	Immersive Directionality	Disabled	Disabled	Disabled	Disabled
	Directionality Plus	Disabled	Disabled	N/A	Disabled
Details	Speech in Loud Noise	On	On	On	On
	Speech in Noise	3	3	3	N/A
	Quiet	3	3	3	3
Details	Transients	3	3	3	N/A
	Wind	3	3	4	3
	Machine	3	3	3	3
	Auto Music	3	Off	Off	Off
Details	Tinnitus	Disabled	Disabled	Disabled	N/A

Indicators	Status	User Controls
Low Battery	Feedback Caseriser	Gesture
Power-On Sound	Experience Level	Right
Power-Off Sound	Power-On Delay	Left
Memory / Home	Auto On/Off	Short Press
Hearing Aid Volume	Self Check	Memory Full ✓
Accessory Screen	Remote Programming	Power Off Full ✓
Mute	Auto Fall Alert	Push & Hold Full ✓
Comfort Boost		Double Tap Thrive Assistant Idle Mode Full ✓
Assistive		
Edge Mode		
Auto Fall Alert		

Figure 9

## Premium Standard Charger, Premium Custom Charger and Mini Turbo Charger

Refer to the 2.4 GHz Charger or 2.4 GHz Mini Turbo Charger QuickTIP for additional information.



Premium Standard Charger



Mini Turbo Charger



Premium Custom Charger