

QUICKFIT AND FINE TUNING

PRODUCT AVAILABILITY: Synergy Devices

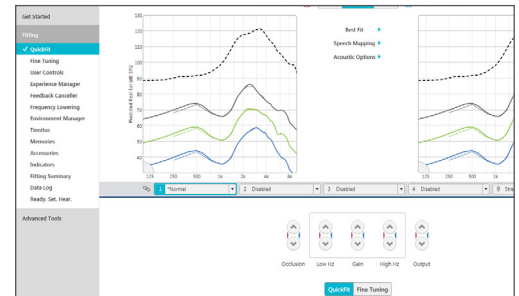
Launch **Inspire X**, then connect hearing devices. Refer to the *Initial Fit Protocol QuickTIPS* for information on getting started.

QUICKFIT

QuickFit allows for global fitting adjustments on a per-memory basis.

1. Select **QuickFit** on the left navigation bar.
2. Select the **Occlusion**, **Gain (Low Hz or High Hz)**, and/or **Output** controls on the bottom panel to make global frequency response adjustments as needed.
3. Select the **Memory drop-down arrows** on the memoryFit bar to program memories.
4. Select **Best Fit** to recalculate to prescriptive targets and defaults, if desired:
 - » Select **Best Fit Current Memory/All Memories** to recalculate the frequency response and all features to match the prescriptive targets and defaults.
 - » Select **Target Match Current Memory/All Memories** to recalculate the frequency response to match the prescriptive targets.
5. Select **Speech Mapping** to capture and view Input, Gain, and Output of devices in real time.
6. Select **Acoustic Options** to change receiver, earpiece, and/or vent size and recalculate response.

NOTE: Changing Acoustic Options will clear the Feedback Canceller measurements and will recommend new measurements.



QuickFit

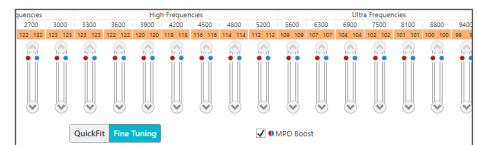


Fine Tuning

FINE TUNING

Fine Tuning allows for precise fitting adjustments of the frequency response on a per-channel, per-input level, and per-memory basis.

1. Select **Fine Tuning** on the left navigation bar or from the bottom of the QuickFit screen.
2. Select **Tables** or **Sliders** to choose desired view for adjustments.
3. Select **+** to expand **Low, Mid, High, and/or Ultra** (if applicable) channel groups.
4. Select channels and input levels to adjust, then select **up and/or down** arrows to make adjustments.
5. Select **MPO Boost** in the Sliders screen to activate MPO Boost, providing an additional 1 to 5 dB of output per channel for severe to profound hearing losses.



MPO Boost