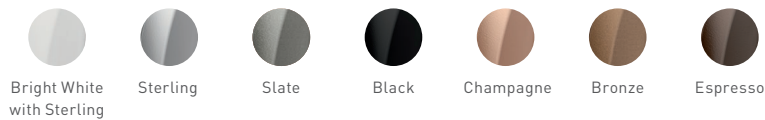




evolv<sup>AI</sup>

Thrive 2.4 GHz + NFMI<sup>1</sup>

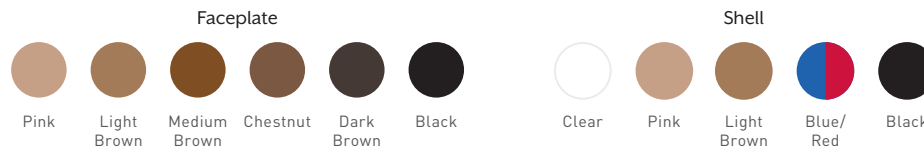


<sup>1</sup>Excludes micro RIC 312, BTE R and PP BTE.

evolv<sup>AI</sup>

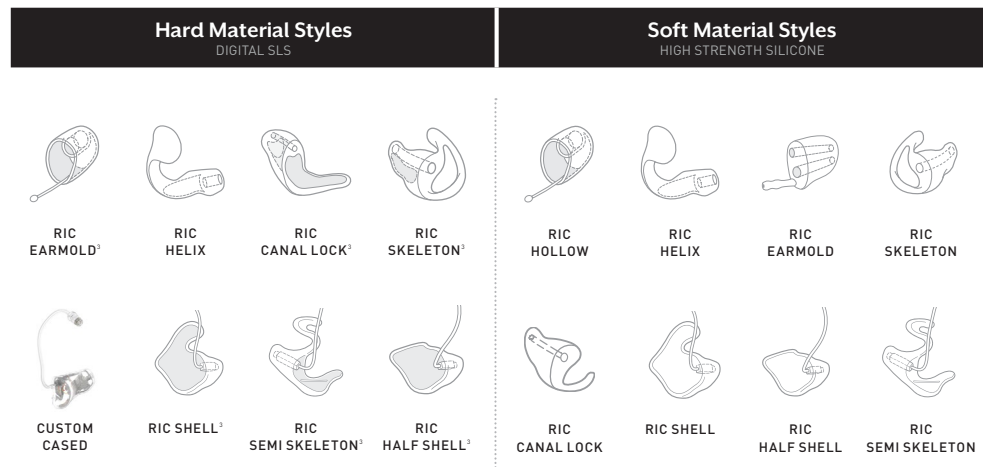
Thrive 2.4 GHz<sup>2</sup>

Industry-leading custom craftsmanship in a rechargeable option



<sup>2</sup>Excludes IIC non-wireless.

## Custom RIC Earmold Styles

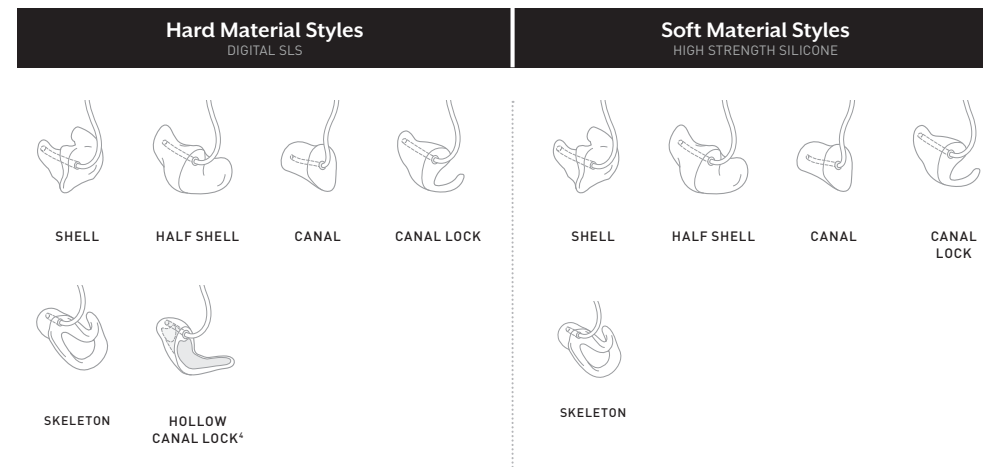


<sup>3</sup>These products default to hollow when ordered in DIGITAL SLS.

**DEFAULT COLOR FOR BOTH MATERIALS IS CLEAR**

Additional colors vary by material and include Red, Blue, Pink/Flesh Transparent, Tan, Light Brown Transparent, Medium Brown and Dark Brown.

## BTE/Thin Tube Earmold Styles



<sup>4</sup>Hollow Canal Lock applies to thin tube earmold styles.

**DEFAULT COLOR FOR BOTH MATERIALS IS CLEAR**

Additional colors vary by material and include Red, Blue, Pink/Flesh Transparent, Tan, Light Brown Transparent, Medium Brown and Dark Brown.

## 2.4 GHz Accessories

Connect patients wirelessly to their world with our versatile line of 2.4 GHz accessories, including our popular Table Microphone.



Compatible with Evolv AI hearing aids

thrive

New setup screens and connectivity enhancements make our Thrive Hearing Control app easier to use and more robust than ever.

HEARShare

New look. New name.  
Thrive Care is now Hear Share.

The world's first and only hearing app for caregivers, Hear Share provides peace of mind by letting Evolv AI patients share certain Thrive app information with whomever they choose.



Apps may have slight differences depending on phone and/or hearing aid model.

# SurfLink Accessories

Our SurfLink accessories provide the personalization and control that each patient needs for their unique lifestyle.



Compatible with wireless Picasso products

# Picasso

## Synergy 900Sync



<sup>5</sup>Excludes IIC style. <sup>4</sup>IIC style only.

## Stock Dome Solutions

Domes: Open	
5 mm	53270-001
6 mm	53270-002
7 mm	53270-003
9 mm	53270-004
11 mm	53270-005

Domes: Power	
8-10mm	13710-000
10-12mm	13711-000
12-14mm	13712-000

Domes: Occluded	
5 mm	53271-001
6 mm	53271-002
7 mm	53271-003
9 mm	53271-004
11 mm	53271-005

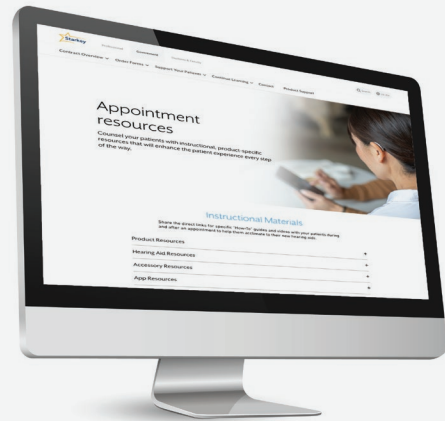
## Stock Mold Solutions

Stock RIC Molds	
Standard	52817-000
Small	52817-002
Extra Small	52817-003

Stock Hollow Silicone Molds	
Standard	52817-035
Small	52817-034
Extra Small	52817-033

Stock Helix RIC Molds	
Standard	52817-004

Stock Thin Tube Solution	
Standard	52817-001



## How-To Guides and Videos for Hearing Aids and Accessories

GovResources.starkeypro.com



Or preview it on your phone with the QR code.

### CLINICIAN SUPPORT

Customer & Audiology Support:  
(866) 418-6928

For all Evolv AI product information:  
Gov.StarkeyPro.com/evolv-ai

For other products & training opportunities:  
Gov.StarkeyPro.com

### PATIENT SUPPORT

Veteran Technical Support<sup>7</sup>:  
(800) 211-7789

Thrive App Setup & User Support:  
Starkey.com/veterans-thrive

Veteran Resources:  
Starkey.com/veterans

<sup>7</sup>For technical support of hearing aids with wireless connectivity only.



Starkey, the Starkey logo, Evolv, Thrive, Thrive logo and SurfLink are registered trademarks of Starkey Laboratories, Inc. SurfLink logo, Evolv logo, Hear Share, Synergy logo and Picasso logo are trademarks of Starkey Laboratories, Inc.

For Evolv AI and Thrive Hearing Control app and iOS/Android compatibility information, please visit starkey.com/thrive-hearing. Use of the Made for Apple badge means that an accessory has been designed to connect specifically to the Apple product(s) identified in the badge, and has been certified by the developer to meet Apple performance standards. Apple is not responsible for the operation of this device or its compliance with safety and regulatory standards. Apple, the Apple logo, iPhone, iPad, iPod touch, App Store and Siri are trademarks of Apple Inc., registered in the U.S. and other countries. All trade names and trademarks are properties of their respective owners.

Google Play and Android are trademarks of Google LLC.