
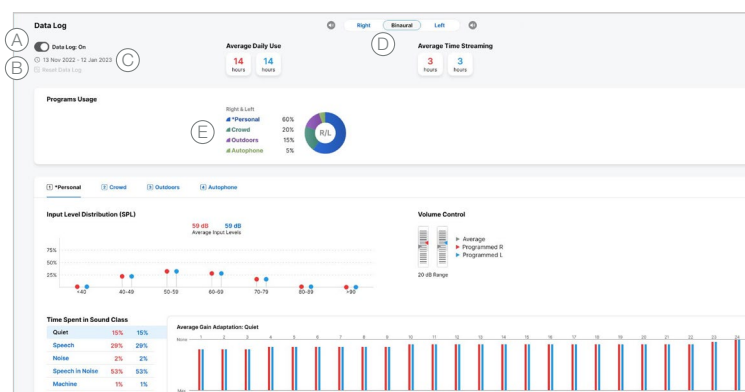


QUICKTIP

Data Log

Data Log offers a glimpse into the life of the individual hearing aid patient. It can be used to counsel patients on hearing aid usage and the benefits of amplification or for fine tuning and troubleshooting during follow-up visits. Access Data Log from the Follow-up session in Pro Fit or from the **Flyout Menu** . The actual data collected while the patient is wearing the hearing aid(s) in different environments is displayed. Pro Fit automatically reads the Data Log contents when the hearing aid(s) are connected.

- (A) Ability to turn Data Log on or off.
 - Default is On. Data Log can be turned On/Off within Data Log or in the hearing aid's mobile app. Turning off Data Log eliminates the ability to generate an Engagement Score in the hearing aid's mobile app.
- (B) Data Log can be reset at any time.
- (C) Data Range displays the time period in which data was collected from the hearing aids.
- (D) Choose to view data for Right, Left or Binaural.
- (E) To view data for a specific memory, click on the desired memory.



Additional information

An overview of the patient's Data Log can be printed by selecting **Print** and then **Data Log Report**. Check the box to include gain adaptation data.

Additional Data Log Information Includes:

- Average Daily Use
- Average Time Streaming
- Program Usage
- Input Level Distribution
- User Preferred Volume
- Time Spent Per Sound Class
- Average Gain Adaptation Per Sound Class
- Time Spent in Wind
- Directionality

