

## PRODUCT GUIDE

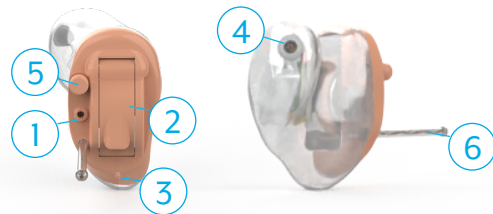


# Completely-In-Canal (CIC)

Your new hearing aids offer Starkey's most advanced technology with supreme sound quality and features. They are customizable to fit your unique hearing needs, helping you to stay connected to the people and things you love most.

## Hearing Aid Parts

1. Microphone
2. Battery Compartment
3. Vent
4. Sound Outlet and wax guard
5. Multifunction Button (Optional)
6. Antenna (do not remove)



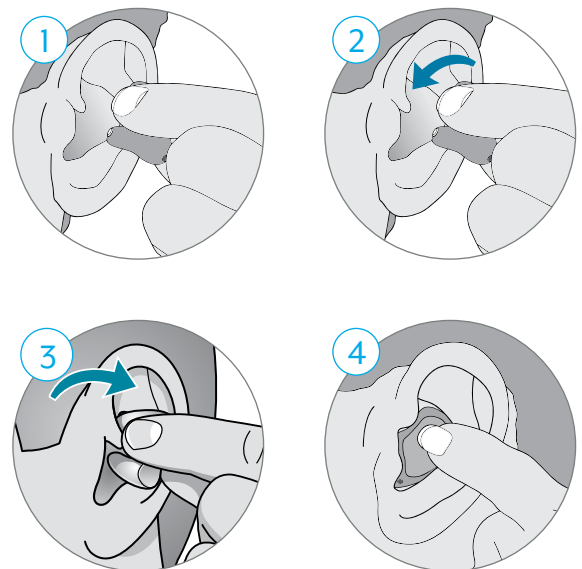
## Insertion and Removal

### To insert the hearing aid:

1. Hold the hearing aid with your thumb and forefinger on the outer edges of the hearing aid.
2. Tilt your hand slightly forward and gently insert the canal tip of the hearing aid into your ear canal.
3. Rotate the hearing aid backward.
4. Softly press the hearing aid into place with your fingertip.

### To remove the hearing aid:

Grasp the antenna with your thumb and forefinger and gently remove from ear.



[How-to Video](#)

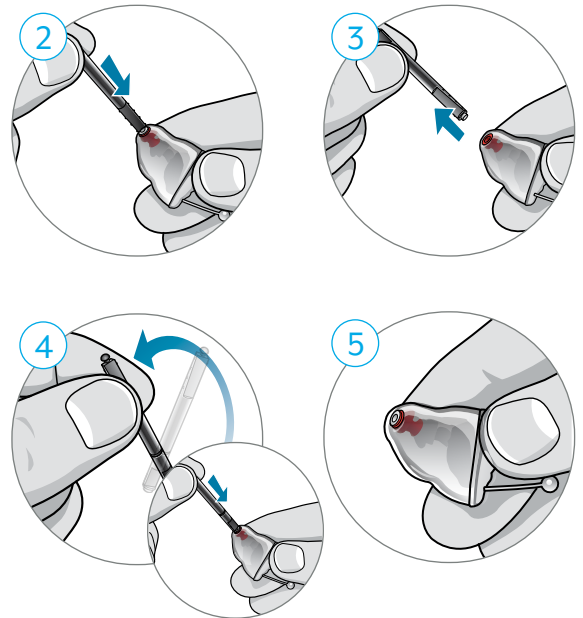
## Hearing Aid Care

### Cleaning Your Hearing Aids

- Use the cleaning brush or soft cloth to clean debris from around the user control, microphone, and battery compartment.
- Never use water, solvents, cleaning fluids or oil to clean your hearing aid.

### Changing Hear Clear Wax Guards

1. Hold the hearing aid with your thumb and forefinger on the outer edges of the hearing aid.
2. Insert the empty end of the application stick straight into the used wax guard in the hearing aid sound outlet.
3. Pull the stick straight out to remove the used wax guard (do not twist).
4. Use the opposite end of the stick to firmly insert the clean wax guard straight into the hearing aid sound outlet.
5. Pull the stick straight out (do not twist) and discard the stick.



### How-to Video



For more help, visit [Starkey.com/Support](https://www.starkey.com/support)