

QUICKTIP

StarLink Mini Remote Microphone



Pairing

The Mini Remote Microphone must be paired to interact with compatible 2.4 GHz hearing aids on the Neuro Processor and Thrive platform. Pairing occurs once, then the hearing aids and Mini Remote Microphone will automatically recognize each other. The Mini Remote Microphone can be paired within the fitting software or outside of the fitting software.

Pairing within Pro Fit

- 1 Launch Pro Fit and connect hearing aids.
- 2 Select **Accessories** from the Preparation Session in Pro Fit or from the **Flyout Menu**. ☰
- 3 Ensure the Mini Remote Microphone is powered on.
- 4 Place the hearing aids within six inches of the Mini Remote Microphone.
- 5 Place the Mini Remote Microphone in pairing mode by double clicking the power button. The LED status indicator will alternately blink blue and red.
- 6 Select **+** to put the hearing aids into pairing mode.
- 7 Pairing is successful when the Mini Remote Microphone image displays on the accessory screen.
- 8 Use the dropdown menu above the Streaming Accessories box to set "Hearing Aid Mic While Streaming."
- 9 Use the dropdown menu below the Mini Remote Mic to optimize streaming sound. Options are Equalized (default), Treble Boost, Bass Boost, and Overall Boost.
- 10 Select **pairing information** for pairing instructions, if needed.



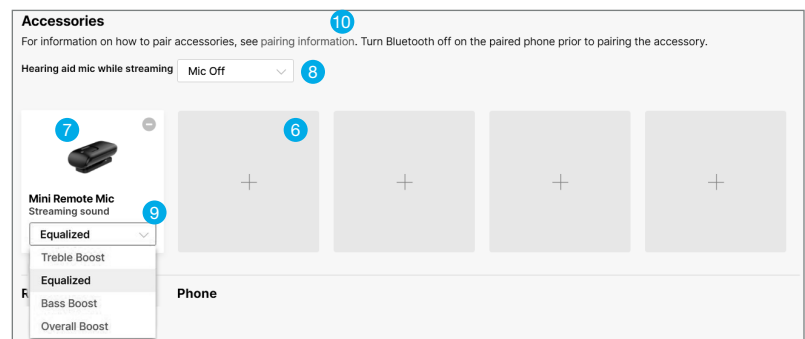
Power On

Press the power button for three seconds and release when the LED illuminates.



Power Off

Press the power button for two seconds and release when the LED turns off.



Pairing

The Mini Remote Microphone must be paired to interact with compatible 2.4 GHz hearing aids on the Thrive platform. Pairing occurs once, then the hearing aids and Mini Remote Microphone will automatically recognize each other. The Mini Remote Microphone can be paired within Inspire X or outside of Inspire X.

Pairing within Inspire X

- 1 Launch Inspire X, connect and detect hearing aids.
- 2 Select **Accessories** on the left navigation bar.
- 3 Ensure the Mini Remote Microphone is powered on.
- 4 Place the hearing aids within six inches of the Mini Remote Microphone.
- 5 Place the Mini Remote Microphone in pairing mode by double clicking the power button. The LED status indicator will alternately blink blue and red.
- 6 Select **Pair** to put the hearing aids into pairing mode. (A)
- 7 Pairing is successful when the Mini Remote Microphone image displays on the accessory screen. (B)
- 8 Use the dropdown menu below the Streaming Accessories box to set "Hearing Aid Mic While Streaming." (C)
- 9 Select the Information icon for pairing instructions, if needed. (D)



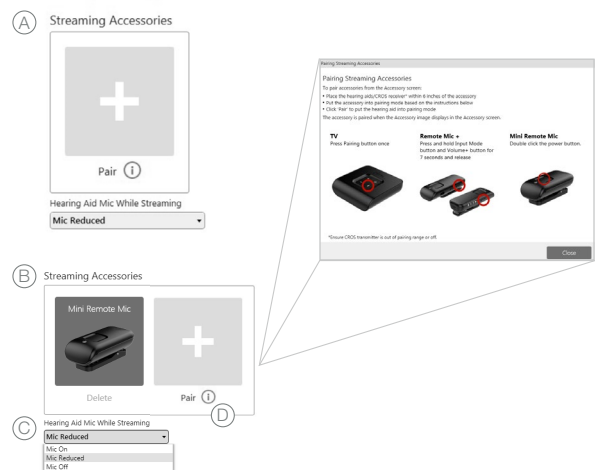
Power On

Press the power button for three seconds and release when the LED illuminates.



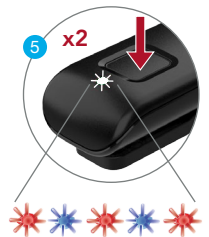
Power Off

Press the power button for two seconds and release when the LED turns off.

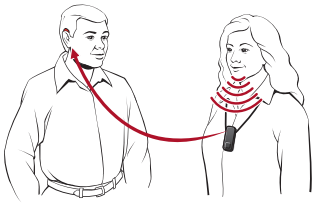


Pairing outside of the software

- 1 Power off any mobile phone or other accessories that were previously paired with the hearing aids.
- 2 Ensure the Mini Remote Microphone is powered on.
- 3 Power off, then power on the hearing aids to place in pairing mode.
- 4 Place the hearing aids within six inches of the Mini Remote Microphone.
- 5 Place the Mini Remote Microphone in pairing mode by double clicking the power button. The LED status indicator will alternately blink blue and red.
- 6 A green LED will blink for each hearing aid to confirm a successful pairing.

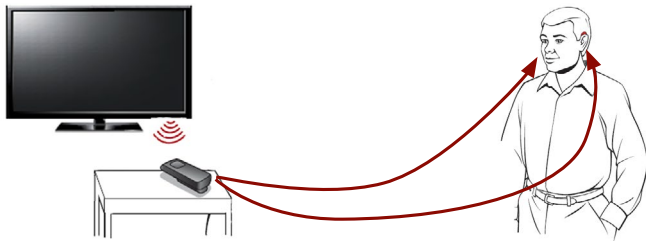


How it Works



The Mini Remote Microphone allows the hearing aid wearer to focus on a single speaker when background noise is present. While not

optimized as a general purpose omni-directional microphone for tabletop use, the Mini Remote Microphone may also provide benefit for television watching. Place the Mini Remote Microphone near the television speakers. To achieve a comfortable listening level, adjust the Mini Remote Microphone distance from the television speakers or modify the audio streaming volume level.



To begin streaming from the Mini Remote Microphone:

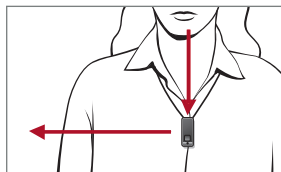
- 1 Ensure the Mini Remote Microphone is powered on by pressing the power button for three seconds.
- 2 Streaming starts automatically in the hearing aids.
- 3 When finished, power off the Mini Remote Microphone to stop streaming.

Audio streaming will stop when:

- The Mini Remote Microphone is powered off.
- A Phone call is received via a direct mobile phone stream into the hearing aids. After the phone call concludes, all streaming stops. If desired, the Mini Remote Microphone stream will need to be manually restarted.
- If the user walks out of range of the Mini Remote Microphone, up to 65 feet or 20 meters, streaming stops and will need to be manually restarted.

Use

- The Mini Remote Microphone can be paired to one set of 2.4 GHz hearing aids on the Thrive platform.
- The Mini Remote Microphone can be clipped to clothing or worn on a lanyard.
- The Mini Remote Microphone operating range is up to 65 feet or 20 meters.
- Place the Mini Remote Microphone close to the audio source for optimal results. The Mini Remote Microphone should be within eight inches (20 cm) of the speaker's mouth.
- The Mini Remote Microphone can stream for up to 10 hours on a full charge.



- The Mini Remote Microphone reaches a full charge in less than three hours and can reach a 50% charge in approximately one hour.
- When the Mini Remote Microphone battery is low, the LED status indicator will slowly pulse red and an audible indicator tone will play in the hearing aids every five minutes.
- The Mini Remote Microphone will momentarily mute if dropped and will resume streaming once the device is stabilized.
- Manually Start/Stop streaming via the hearing aid user controls, the 2.4 GHz Remote, hearing aid mobile app and/or power the Mini Remote Microphone on or off.
- Stream Volume can be adjusted via the hearing aid mobile app, the 2.4 GHz Remote and/or the hearing aid user controls.