

QUICKTIP

Ship Mode

Ship Mode is a method to put rechargeable hearing aids into a low power/off mode when shipping the hearing aids in for repair. Shipping in a low power/off mode will prevent the hearing aids from producing feedback while in transit.

Enabling Ship Mode

- 1 Launch Inspire X.
- 2 On the Get Started screen, select the check box next to the hearing aid(s) to be shipped in for repair. [Fig. 1]



Figure 1

- 3 Select Tools, then select **Ship Mode**. [Fig. 2]

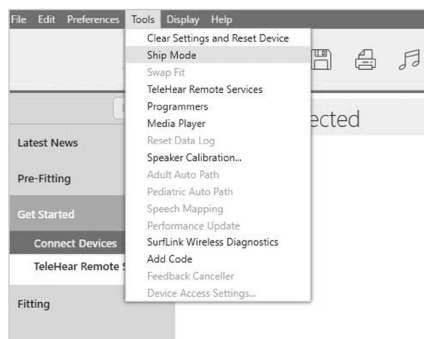


Figure 2

- 4 Once prompted, select **Yes** to continue setting the hearing aid(s) to Ship Mode. [Fig. 3]

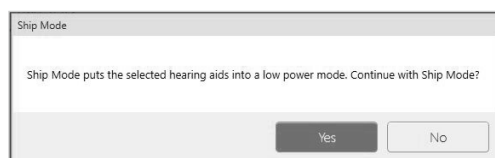


Figure 3

- 5 The hearing aid(s) are now powered down and will no longer display on the Get Started screen.