

## QUICKTIP


# Audiometer

Audiometer obtains In-situ thresholds and uncomfortable loudness levels by generating pure tone signals through the patient's hearing aid(s). Audiometer may be used during the initial fit to assist the hearing professional in more accurately programming the hearing aid(s).

## Obtaining In-situ Thresholds

In-situ thresholds are specific to the acoustic coupling of the hearing aids, as well as the environment the test was completed in and are not to be considered replacement for diagnostic results.

- 1 Access In-situ Audiometry by selecting **Audiometer** from the left navigation bar within Inspire X. [Fig. 1]

**NOTE:** The hearing aid microphones will automatically mute when entering Audiometer. Select the microphone icon  to unmute the hearing aids to talk to the user (e.g. to provide directions or to answer questions).

- 2 Complete the pure tone threshold test to identify the softest detectable level of the stimulus. [Fig. 1]

**NOTE:** Audiometer is a monaural function and starts on the right ear in a binaural fitting. Click Left to adjust the left ear first, if desired.

- (A) Check **Display Speech Spectrum** to display a gray shaded region representing conversational speech, if desired.
- (B) Check or uncheck **Pulsed** to select a pulsed or steady tone.
- (C) Click on the audiometric symbol or on the desired frequency to test.
- (D) Use the up and down arrows to increase or decrease the level of the stimulus for the desired frequency.
- (E) Click on the **Presentation** button to present the stimulus.
- (F) Use the right and left arrows to make measurements for subsequent frequencies, or click on the desired frequency to test.
- (G) To test thresholds for the opposite ear, select the desired side and repeat steps B through F.

**NOTE:** Once In-situ thresholds are obtained, red O's or blue X's appear on the graph. To delete a point, right click on the point and select **Delete Point**. To delete the In-situ test results, select **Reset** [Fig. 2] or right click on the graph and click **Reset Curve**.

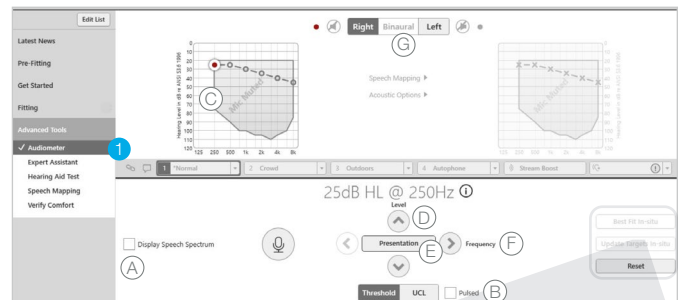


Figure 1

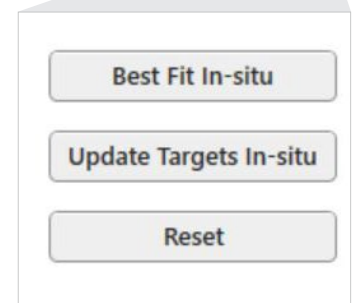


Figure 2

## Obtaining In-situ Thresholds (Continued)

- Choose **Best Fit In-situ** to update targets and apply a new Best Fit or choose **Update Targets In-situ** to update targets only. A dialog box will appear asking which hearing aids to update if adjustments were made to both devices. Click **OK** to update the selected hearing aid(s). [Fig. 2 and 3]

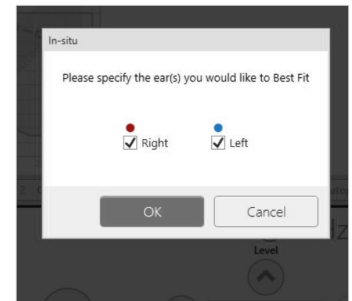


Figure 3

## Obtaining Uncomfortable Loudness Levels

- Click UCL to obtain uncomfortable levels, if desired. [Fig. 4]

- Check **Display Speech Spectrum** to display a gray shaded region representing conversational speech, if desired.
- Check or uncheck **Pulsed** to select a pulsed or steady tone.
- Click on the **'U'** symbol or on the desired frequency to test.
- Use the up and down arrows to increase or decrease the level of the stimulus for the desired frequency.
- Click on the **Presentation** button to present the stimulus.
- Use the right and left arrows to make measurements for subsequent frequencies, or click on the desired frequency to test.
- To test UCLs for the opposite ear, select the desired side and repeat steps B through F.



Figure 4

**NOTE:** Once In-situ UCLs are obtained, red U's or blue U's will appear on the graph. To delete a point, right click on the point and select **Delete Point**. To delete the In-situ test results, select **Reset** [Fig. 2] or right click on the graph and click **Reset Curve**.

- Choose **Best Fit In-situ** to update targets and apply a new Best Fit or choose **Update Targets In-situ** to update targets only. A dialog box will appear asking which hearing aids to update if adjustments were made to both devices. Click **OK** to update the selected hearing aid(s). [Fig. 2 and 3]