

PRODUCT GUIDE

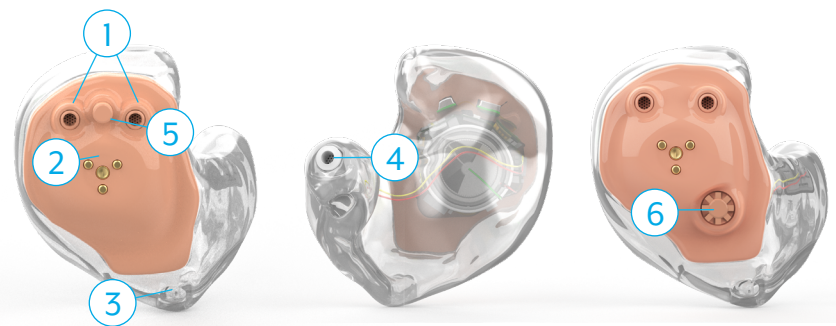


In-the-Ear Custom Rechargeable (ITE R)

Your new hearing aids offer Starkey's most advanced technology with supreme sound quality and features. They are customizable to fit your unique hearing needs, helping you to stay connected to the people and things you love most.

Hearing Aid Parts

1. Microphones
2. Charging Contacts
3. Vent
4. Sound Outlet
5. Multifunction Button (Optional)
6. Rotary Volume Control (Optional)



Insertion and Removal

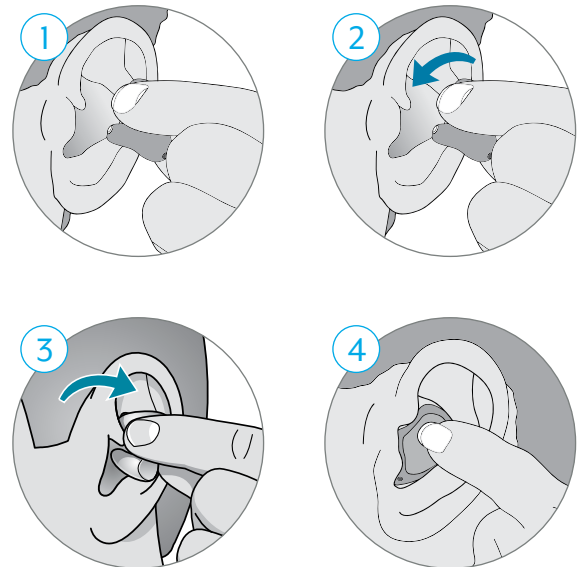
To insert the hearing aid:

1. Hold the hearing aid with your thumb and forefinger on the outer edges of the hearing aid.
2. Tilt your hand slightly forward and gently insert the canal tip of the hearing aid into your ear canal.
3. Rotate the hearing aid backward.

4. Softly press the hearing aid into place with your fingertip.

To remove the hearing aid:

Grasp the hearing aid with your thumb and forefinger and slightly rotate it forward as you pull outward.



[How-to Video](#)

Charging Your Hearing Aids

Your hearing aid uses a rechargeable battery as its power source. To charge the battery:

1. Plug your charger into an outlet.
 2. Place your hearing aids in the charger with the charging contacts touching the charging posts.
 3. Your hearing aids will turn off automatically and begin to charge.
- The front of the charger is equipped with two LED indicators to provide information about hearing aid charging. The front LED indicators will glow green to indicate successful charging.
 - When the hearing aids are fully charged (approx 3.5 hrs charge time), the front LED indicators will be solid green.
 - Your hearing aids will automatically power on when removed from the charger.

Battery Indicator

You will hear an indicator through your hearing aid when battery voltage is low and the battery needs charging.

How-to Video

Hearing Aid Charger Parts

1. Cleaning Brush
2. Charging Posts
3. Hearing Aid Charging LEDs
4. On-board Battery LEDs
5. Power Cord Port



On-board Battery:

- The back of the charger is equipped with four LED indicators to provide information about the status of the on-board battery. The on-board battery allows charging of the hearing aids up to three times while the charger is away from a power source.
- When away from a power source, the back LED indicators will be solid green indicating the amount of charge available for the on-board battery. The LED indicators will turn off after 10 seconds to preserve power.
- One blinking LED on the back of the charger indicates that the on-board battery is low and the charger should be connected to a power source.
- When plugged into a power source, the back LED indicators will glow green to indicate successful on-board battery charging.

Hearing Aid Care

Cleaning Your Hearing Aids

- Use the cleaning brush or soft cloth to clean debris from around the user control, microphone, and charging contacts.
- Never use water, solvents, cleaning fluids or oil to clean your hearing aid.

Cleaning Your Charger

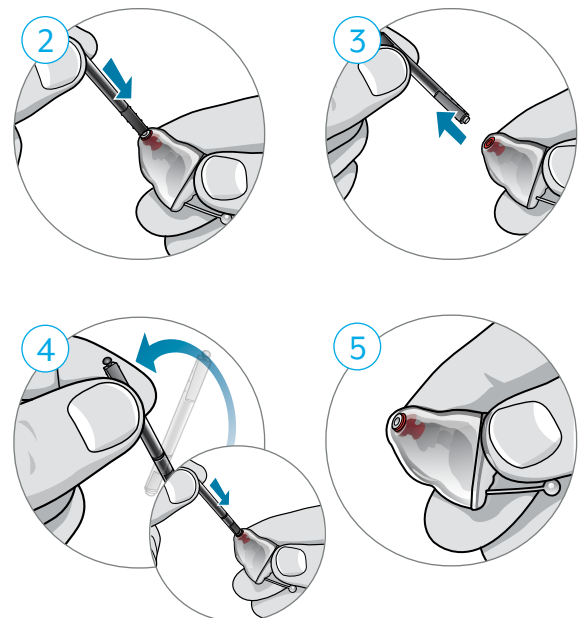
- Use the provided cleaning brush to keep the charging posts clear of debris.
- Do not use water, solvents or cleaning fluids to clean the charging posts.
- Keep lid closed as much as possible to avoid dust and debris build up.
- Store your charger in a clean and dry location, such as a dresser or shelf rather than the bathroom or kitchen.

To ensure the longest life of your rechargeable hearing aid batteries and the batteries in the charger:

- Fully charge hearing aid batteries every night.
- Do not expose to excess heat such as a window sill or in a hot car.

Changing Hear Clear Wax Guards

1. Hold the hearing aid with your thumb and forefinger on the outer edges of the hearing aid.
2. Insert the empty end of the application stick straight into the used wax guard in the hearing aid sound outlet.
3. Pull the stick straight out to remove the used wax guard (do not twist).
4. Use the opposite end of the stick to firmly insert the clean wax guard straight into the hearing aid sound outlet.
5. Pull the stick straight out (do not twist) and discard the stick.



How-to Video



For more help, visit [Starkey.com/Support](https://www.starkey.com/support)