

Quick Start Guide

Evolv AI



ITC/HS Rechargeable and ITE Rechargeable

**At Starkey, we
understand the
impact of hearing loss.**

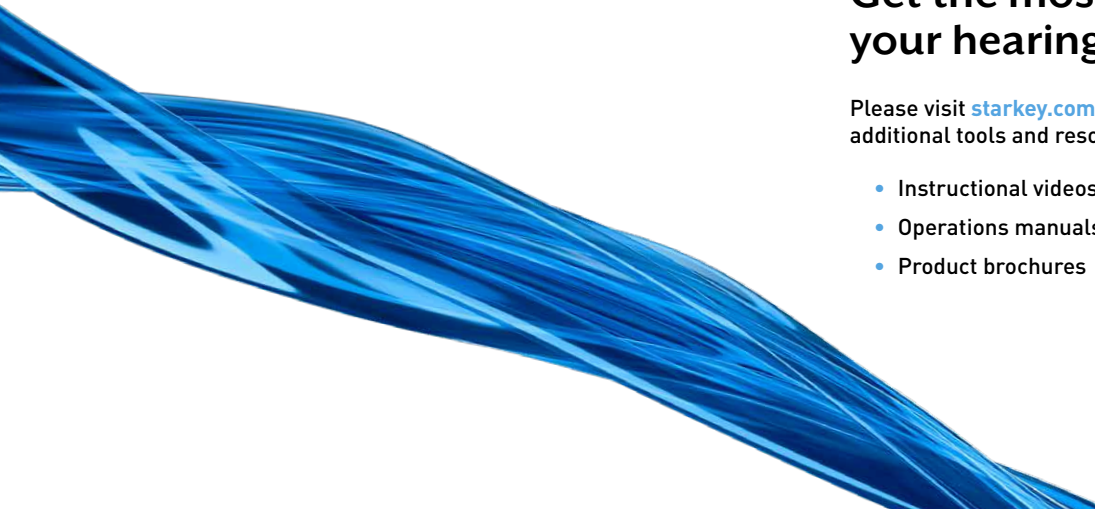
**Which is why we take
every step to make
hearing effortless.**

Evolv AI offers a complete line of our most innovative hearing aids ever. Handcrafted and loaded with our most innovative technology and clearest sound, these hearing aids seamlessly connect you to the life you love.

Get the most out of your hearing aids

Please visit starkey.com.au/support for additional tools and resources including:

- Instructional videos
- Operations manuals
- Product brochures



Charging Your Hearing Aids



- Place your hearing aids in the charger with the charging contacts touching the charging posts.
- Your hearing aids will turn off automatically and begin to charge, as long as your charger is powered; Custom charger requires external power source (i.e. wall outlet).
- Your hearing aids will automatically power on when removed from the charger; Custom charger requires external power source (i.e. wall outlet).
- Note: The LEDs corresponding to each hearing aid:
 - Glowing Green = Charging
 - Solid Green = Fully Charged
 - Blinking Red = Fault State. To reset, remove the hearing aids from charger, wait until LED turns off and re-insert aids. If Fault State continues, call your hearing professional.
- Charging occurs with the lid open or closed; your hearing aids will be completely charged in under 3 ½ hours.
- It is safe to keep them in the charger after they are fully charged and any time that you are not wearing them.
- If you will not be wearing your hearing aids for an extended period of time (i.e., weeks) remove the plug from the charger and the hearing aids from the charging posts. You will need to manually power the hearing aids off by pressing the push button for three seconds. You may store them in the reservoir.

Power On & Off

ON - The hearing aids will power on automatically after removing them from the charger, as long as your charger is powered/plugged into an external power source (i.e., wall outlet). There is a delay that allows you time to insert your hearing aid into your ear.

ON - If the hearing aid is manually powered off, pressing the user control for three seconds will power it on. The delay still exists, to give you time to insert the hearing aid into your ear.

OFF - The hearing aids will power off automatically when placed on the charger posts, as long as your charger is powered/plugged into an external power source (i.e., wall outlet). Charging will proceed.

OFF - The hearing aids can be powered off manually by pressing the user control for three seconds.

System Care

HEARING AID CARE

Keep your hearing aid clean. Heat, moisture and foreign substances can result in poor performance.

- Use a cleaning brush or soft cloth to clean debris from around the user control, microphone and battery compartment.

- Inspect the receiver, earbud and wax guard regularly.
- Never use water, solvents, cleaning fluids or oil to clean your hearing aid.

CHARGER CARE

Keep your charger clean. Heat, moisture and foreign materials can result in poor performance.

- Use the provided cleaning brush to keep the charging posts and hearing aid microphones clear of debris.
- Do not use water, solvents or cleaning fluids to clean the charging posts.
- Keep lid closed as much as possible to avoid dust and debris buildup.
- Store your charger in a clean and dry location such as a dresser or shelf rather than the bathroom or kitchen.

To ensure the longest life of your rechargeable hearing aid batteries:

- Fully charge hearing aid batteries every night.
- Do not expose to excess heat, i.e., do not store on a window sill or in a hot car.

Helpful Hints

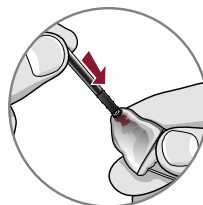
- Do not take apart your hearing aids or insert the cleaning tools inside them.
- When not in use, place your hearing aid in the storage container and store:
 - In a dry, safe place
 - Away from direct sunlight and heat to avoid extreme temperatures
 - Where you can easily find them
 - Safely out of reach from children and pets

Hear Clear Receiver Wax Guards

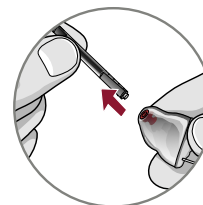
Custom hearing aids integrate disposable Hear Clear earwax protection. The innovative wax guards prevent earwax accumulation in the hearing aid receiver. When you need to replace your wax guards, please follow the instructions below.

1. Insert empty end of the application stick straight into used wax guard in hearing aid.
2. Pull **straight** out (do not twist) on stick to remove used wax guard.

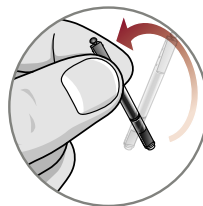
3. Use opposite end of stick to firmly insert clean wax guard straight into hearing aid.
4. Pull **straight** out (do not twist) to remove stick and discard.



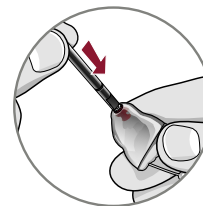
1



2



3



4

Download and Connect to the Thrive Hearing Control App



The Thrive Hearing Control app makes it easy to control and adjust your 2.4 GHz rechargeable hearing aids with your compatible Apple® or Android™ device. Downloading and connecting to the app is easy; refer to the **Thrive Hearing Control app User Guide** or visit starkey.com/thrivesupport for additional information, such as:

- Integrated sensors and artificial intelligence features
- Automatic and custom memories
- Geotags
- Tinnitus management
- Find My Hearing Aids
- Alerts

For Thrive Hearing Control app and iOS/Android compatibility information, please visit starkey.com/thrivesupport.

Hearing Aid Information

Hearing aid model: _____

Hearing Aid Serial number: L _____ R _____

Charger Serial number: _____

Warranty expiration date: _____

Memory settings, if applicable: _____

Memory #	Environment/ Listening Situation	Beep/Indicator
----------	-------------------------------------	----------------

_____	_____	_____
_____	_____	_____
_____	_____	_____
_____	_____	_____
_____	_____	_____

Special instructions: _____

Hearing professional: _____

M/T Ratings

	M	T
ITC/HS Rechargeable	2	N/A
ITE Rechargeable	2	2

For Thrive Hearing Control app and iOS/Android compatibility information, please visit starkey.com/thrivesupport.

Apple, the Apple logo, iPhone, iPad and iPod touch are trademarks of Apple Inc., registered in the U.S. and other countries. App Store is a registered service mark of Apple Inc.

Android and Google Play are trademarks of Google LLC.

Starkey logo, Starkey, Thrive, Thrive logo and Evolv are registered trademarks of Starkey Laboratories, Inc. Evolv is a trademark of Starkey Laboratories, Inc.



Starkey.com

6700 Washington Ave. S.
Eden Prairie, MN 55344
1.800.328.8602

