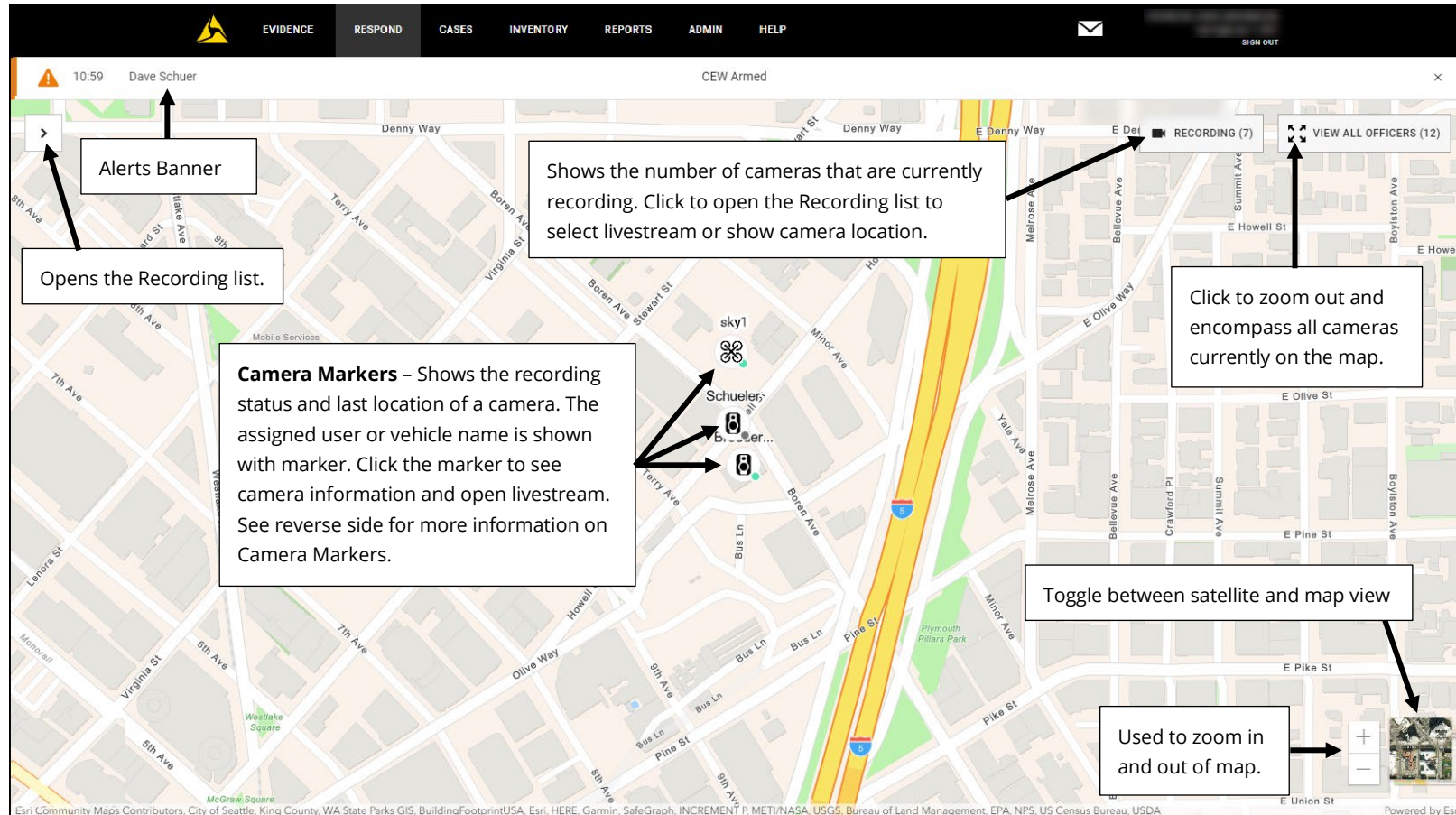


Axon Respond Map Overview (browser view)

After you sign in to Axon Evidence, click **Respond** to see the map and location information. Note that livestream is only available for Axon Respond for Devices license + users.



Navigating the Map

- Click, hold, and drag your mouse to move around the map.
- Click the map + or - icons (lower right of the map) to zoom in or out.
OR
Use your mouse wheel to zoom in and out.

- Livestream views open above the camera marker. The livestream view window can be moved around the map by clicking and holding on the window and then moving it on the map.
- The Recording list opens on the left side of the map.
See the reverse side for more information on the list, markers, and livestream view.

Axon Respond for Devices Quick Reference Sheet (cont.)

Recording, Alerts, and Marker Information

Recording List (Click **Recording** or > to open on left-side of map)

Recording (8) < ← Click to minimize list

Search 🔍 ← Name search

Stream Active Cameras ← Livestream selected cameras

46% Fair ← Battery charge and LTE signal level

Bates, Evan ✓ ← Select camera

Location last updated a few seconds ago ← Assigned user or vehicle name

LIVE STREAM ← Click to open livestream

80% ← Battery charge and LTE signal level

Alexander, Will □ ← Select camera

Location last updated 7 days ago ← Assigned user or vehicle name

12:55 Multiple gunshots detected ← Camera alerts

LIVE STREAM ← Click to open livestream

Click location update to go to camera position on the map

Alerts Banner (Appears at the top of the map, open Recording List to see alert)



Clicking on the banner takes you to the map location of the alert. Clicking **X** dismisses the banner.

Marker Information (Click marker or Recording List location to show information)

30% Fair ← Battery charge and LTE signal level

Schuer, Dave X ← Click to close

Location last updated a few seconds ago ← Assigned user or vehicle name

06:50 Gunshot detected ← Last location update

LIVE STREAM ← Camera alerts

Click to open livestream

OFFICER ACTIVITY

No recent activity

Camera Markers

	Center icon shows type and location. The center icon shows the camera type; Axon Body 3 (top), Axon Fleet 3 (center) or Axon Air (bottom). The color dot in the lower-right indicates device status. <ul style="list-style-type: none"> A red dot indicates that the device is recording. A green dot indicates that the device is buffering. A gray dot indicates that the device is off or docked. Markers are removed from map based on agency settings.
	Multiple cameras, indicated by number, at location. <ul style="list-style-type: none"> Click or manually zoom in to see individual camera markers. Right-click to view a list of devices in the cluster.
	Approximate camera location as reported by GPS. The camera is in the circle, but not necessarily in the center. Shown when Recording List location is clicked.
	Alert associated with camera. Alert status is removed after 4 hours or when marked resolved or false.

Livestream View Information

The livestream view appears on the right side of the map when you open a livestream. You can have up to 25 livestream views open at a time.

Click, hold, and drag to move the livestream view.

54% Fair ← Battery charge and LTE signal level

Schuer, Dave X ← Tethered/Untethered status and click to close livestream

Location last updated a few seconds ago ← Assigned user or vehicle name and location update

06:50 Gunshot detected ← Camera alerts

LIVE ← Camera alerts

OFFICER ACTIVITY

No recent activity

Volume control

Full Screen

Alerts List