

Axon Updates May 2025

The schedule for the **May 2025** release is as follows:

- Customers in the Enterprise region (.ent.evidence.com), new European region (.eur.evidence.com), and European legacy region (.eu.evidence.com) receive the update on **May 29, 2025**.
- Customers in U.S. Federal (.evidence.com) and U.S. law enforcement receive the update on **May 29, 2025**.
- Customers in Australia (.au.evidence.com), Canada (.ca.evidence.com), and the Netherlands receive the update on **June 3, 2025**.
- Customers in South America (.la.evidence.com) and the United Kingdom receive the update on **June 4, 2025**.

For information on the update schedule times for your region, refer to the [Axon Evidence Maintenance Schedule](#) on the Axon website.

We don't expect any downtime during this update.

Additional help documentation for the products included in these release notes is located at axon.com/help.

Contents

Digital evidence management	4
AI-powered features	4
Axon Evidence	4
Axon Evidence	4
Axon Auto-Transcribe	5
Axon Community Request	5
Third-Party Video Support	5
Mobile	6
Axon App	6
Axon Capture	6
Axon View	6
Axon Evidence Upload XT	6
Upload XT version 2.12.2 now available	6
Resolved issues	7
Coming soon	7
Redesigned Axon Evidence	7
Cameras and sensors	8
Axon Body Workforce	8
Firmware v1.2516.x	8
Axon Body 4	8
Firmware v1.2516.x	8
Axon Body 3	8
Firmware v1.2516.x	8
Axon Interview	9
Client and server watchdog apps added	9
Device checkout	9
Android v1.1.1.36 and iOS v2.0.8.6 released April 29th	9
iOS requirement	9
Axon View XL	9
Firmware v1.31	9
Added refresh tokens	10
App hardening	10
Resolved issues	10
Coming soon	10
Axon Body 4	10
Axon Body 3	11

TASER energy weapons	12
TASER	12
Resolved issues	12
Axon VR Training	13
VIVE Focus Vision headset	13
Community Engagement Training scenario	13
Simulator Training: TASER 10 VR Validation Course metrics	13
Simulator Training: TASER 10 VR Core I update	14
Resolved issues	14
Coming soon	14
Axon VR training	14
Axon Justice	15
Working with folders	15
Version 4.4 (May 2025)	16
New Language Support	16
Smarter Project Management	16
Metadata Tagging	16
Subtitle Stream Playback	16
Lens Distortion Correction Enhancements	17
Major Updates to the Project Map Tool	17
Fixes and Enhancements	17
Improved Role-Based Access (Axon Evidence integration)	17
Axon Evidence Local version 5.2 (May 2025)	19
Summary of key updates	19
Introduction	20
Evidence Map	20
Evidence Clips	25
Unique Asset ID and Checksum	30
Role-Based Settings and Device Profiles for Axon Body 3 and Axon Body 4	32
Manage Access Evidence Search	35
LDAP(S) Health Checker and Management Tool	37
Dependency and Compatibility Overview	38
Change log	40

Digital evidence management

AI-powered features

The following AI-powered features use artificial intelligence to provide insights, recommendations, or analysis based on available data and user inputs. These outputs may include inaccuracies, limitations, or outdated information. These tools are designed to support—not replace—professional judgment, legal interpretation, and human oversight. Users are responsible for carefully reviewing and verifying AI-powered content before acting on it. Axon continually works to enhance AI accuracy, mitigate bias, and uphold ethical standards. Learn more at [Axon AI](#).

For a detailed understanding of each feature, refer to the corresponding sections within these release notes.

Looking for what's next? See the Coming Soon section for AI-powered features planned for future releases.

- [Auto-Transcribe: Automatic translations of Spanish to English transcripts in Axon Evidence](#).

Axon Evidence

Axon Evidence

Activation date added to user summary report

The User Summary Report now includes an "Activation Date" column, showing the date a user activated their account from an invite. This matches the activation date shown in User Admin.

Improvement

Marker exports now provided in PNG format

Marker exports from Axon Evidence are now provided in PNG format, supporting higher image fidelity and better preservation of visual detail.

Improvement

Automated People Detection is now called Smart Detection

The Automated People Detection feature is now called Smart Detection. If you previously accessed help content using “Automated People Detection,” you can now find it under Smart Detection.

Learn more about [Smart Detection](#).

Admin

Axon Auto-Transcribe

New transcription languages

New transcription languages are available, including Multilingual English-Spanish, U.S. Spanish, and French Canadian.

Learn more at [Language support](#).

New | AI Era plan

Translate transcripts from Spanish to English

You can now translate transcripts from Spanish to English. If your agency serves a large Spanish-speaking population, it's recommended to use the default transcription language model of Multilingual English-Spanish. This helps create high-quality translated transcripts. Learn more at [Translate transcript](#).

New | AI Era plan

Axon Community Request

Legacy Create Invite page removed

The legacy Create Invite page has been deprecated. Users will now be automatically redirected to the updated experience. If redirection does not occur, users should update any bookmarks and clear their browser cache.

Improvement

Third-Party Video Support

The May release includes enhancements for NeroVision (.nvf), ExacqVision (.exe), Carbon (.car), Axxon (.exe), and Shockwave (.dcr) audio. Parser fixes address handling issues with Genetec (.g64x) H.265/HEVC and Genetec audio.

If you encounter an unsupported format, contact support@axon.com.

Improvement

Mobile

Axon App

Updated version of the Axon app required by June, 2025

- For feature improvements, you must update the Axon app to the most current version.
- Older app versions will no longer be supported. See [Keep your Axon apps up to date](#) for more information.

Deprecated

Axon Capture

Updated version of Axon Capture required by June, 2025

- For feature improvements, you must update Axon Capture to the most current version.
- Older app versions will no longer be supported. See [Keep your Axon apps up to date](#) for more information.

Deprecated

Axon View

Updated version of Axon View required by June, 2025

- For feature improvements, you must update Axon View to the most current version.
- Older app versions will no longer be supported. See [Keep your Axon apps up to date](#) for more information.

Deprecated

Axon Evidence Upload XT

Upload XT version 2.12.2 now available

- The latest released version of Upload XT, 2.12.2, is now available. Sign in to the [Evidence Upload XT product page](#) to download.
- Previous versions of the app are no longer supported.

New | **UI/Accessibility** | **Federal**

Resolved issues

Product	Resolved issue
Partner API updates	<ul style="list-style-type: none"> The API permission to assign evidence to user has been changed from evidence.any.modify to evidence.any.editowner . Customers impacted will have to create a new API access client to continue to assign evidence. See updated Partner API documentation for further details or connect with your Axon support for additional questions.
Axon Evidence	<ul style="list-style-type: none"> A bug that impacted evidence reassignment permission has been fixed, users who do not have the permission to reassign evidence will not able to. A bug impacting the ability for users to update retention category has been resolved.
Axon Community Request	Corrected a bug that occurred during the invite creation process, when a user input an unknown or new area code (ex. '983') the user would receive an error and prevent the invite to be created. The product is now updated to automatically support new area codes across the US.

Coming soon

Redesigned Axon Evidence

A redesigned version of Axon Evidence is coming this October, bringing a fresh look and feel to the platform you use every day. The new experience introduces a modern layout, streamlined sidebar navigation, and intuitive workflows—making it easier to navigate, organize, and take action across all your digital tools and data.

The redesigned Axon Evidence introduces a simplified new interface that adapts to how you work, with updates like light and dark mode, collapsible navigation, and improved search options with map-based filtering. The redesigned evidence detail page features expanded metadata, supports multicam playback, and so much more. Users can move between the current and redesigned versions throughout the rollout.

More details and training resources will be shared closer to release.

New | **Admin**

Cameras and sensors

Axon Body Workforce

To enroll devices in early access ahead of the general release, visit [Early Access Devices](#).

Firmware v1.2516.x

Releases to general availability June 10th. This release includes performance improvements.

Improvement

Axon Body 4

To enroll devices in early access ahead of the general release, visit [Early Access Devices](#).

Firmware v1.2516.x

Start releasing with early access devices on May 13. This phased rollout will span three weeks with general availability targeted for June 4. Includes support for the audio translation, on-device localization support for Dutch, French, and Korean, and fixes and performance improvements.

Improvement | Federal

Axon Body 3

To enroll devices in early access ahead of the general release, visit [Early Access Devices](#).

Firmware v1.2516.x

Starts releasing with early access devices on May 8. This phased rollout will span three weeks with general availability targeted for June 3. This release includes performance improvements.

Improvement | Federa

Axon Interview

Client and server watchdog apps added

Version 4.17 added two new Interview applications to help gather log data, send info on overall system health, and provide logs in rare cases of app failures.

New | UI/Accessibility | Federal

Device checkout

Android v1.1.1.36 and iOS v2.0.8.6 released April 29th

Improvements include user interface updates to clearly display assigned user details and body camera location for easier confirmation of assignments at a glance. The admin logging into the Device Checkout app must enable the "Inventory search" permission for themselves in Axon Evidence at **Admin > Roles & Permissions > Configure Role > Search & Reporting Access**.

Improvement | UI/Accessibility | Federal

iOS requirement

iOS devices must upgrade to v16 or later to access the latest iOS version of the app.

New

Axon View XL

Firmware v1.31

Federal-Grade Security (IL4 Ready): ViewXL is now validated for IL4 (Impact Level 4) compliance—enabling secure use by U.S. government and defense agencies. IL4 covers controlled unclassified information (CUI) and includes secure comms via custom agency domains.

Improvement | UI/Accessibility | Federal

Added refresh tokens

Upgraded authentication to use refresh tokens for a more secure, seamless way to stay logged in for fewer login interruptions during long sessions and better protection against unauthorized access.

Improvement | UI/Accessibility | Federal

App hardening

Under-the-hood key stability and security fixes include stronger permission enforcement, enhanced error handling, and backend optimizations to reduce downtime and errors.

Improvement | UI/Accessibility | Federal

Resolved issues

Product	Resolved issue
Axon Body 4	<ul style="list-style-type: none"> Removed Photo Marker option from Programmable Button 2 options. This feature will automatically be reconfigured to Select, which will also allow agencies to add markers to evidence. This change will be conducted in two phases across the May and June Axon Evidence releases with no disruption to marker functionality. Added manual assignment for Device Pooling. This ensures the body camera does not unassign itself automatically if undocked.
Device checkout	<ul style="list-style-type: none"> Multiple devices are no longer selected during check-out. App no longer freezes when trying to cancel the login process.

Coming soon

Axon Body 4

Firmware v1.2522.x

Starts releasing with early access devices on June 24. This phased rollout will span three weeks with general availability targeted for July 16.

Axon Body 3

Firmware v1.2522x

Firmware v1.2522.x Starts releasing with early access devices on June 24. This phased rollout will span three weeks with general availability targeted for July 15.

TASER energy weapons

TASER

Resolved issues

- Warnings on the TASER dashboard are now ordered by severity.
- Fixed an issue where for Australian customers, distance was displayed in imperial units rather than metric units.
- Fixed an issue where changing a “Spent” cartridge status back to “In Stock” triggered a registration error, even when valid for evidence workflows.

Axon VR Training

VIVE Focus Vision headset

The VIVE Focus Vision headset is now shipping to customers scheduled for device refreshes, with broader availability coming soon. Designed to streamline the training experience, the updated headset introduces Color Passthrough for more intuitive controller pairing, Auto-IPD for automatic focus adjustment, and a hot-swappable battery that keeps training uninterrupted.

Learn more about the [VIVE Focus Vision](#).

New

Community Engagement Training scenario

In this new scenario, trainees will explore **Critical Incident Stress Management (CISM)** techniques following a traumatic event. Through realistic scenarios, trainees learn to identify both the emotional and physical effects of critical incidents and practice peer-based defusing and debriefing methods. To download this scenario, go to **Community Engagement Training library > Manage Content**.

Learn more about [Community Engagement Training scenarios](#).

New

Simulator Training: TASER 10 VR Validation Course metrics

[Simulator Training: TASER 10 VR Validation Courses](#) now include real-time performance metrics, feedback tools, and replay options to improve training effectiveness. These metrics include **Drill Replay** (retry drills instantly after sensitive area probe placement), **Drill Summary** (get immediate post-drill feedback), **Lag Time** (measure time from first deployment to first NMI), and **Time to Incapacitation** (track time from threat appearance to full effects of NMI).

Learn more about these [feedback tools](#).

New

Simulator Training: TASER 10 VR Core I update

We've updated TASER 10 VR Core I to reflect real-world deployment more accurately. The course now requires trainees to draw the TASER 10 VR Controller from a holster. Furthermore, this course now includes Drill Replay (retry drills instantly after sensitive area probe placement) and Lag Time (measure time from first deployment to first NMI). Learn more about TASER 10 VR Core I.

Resolved issues

- Fixed issue that caused tablet downloads to resume during facilitated sessions, potentially impacting performance in low-bandwidth environments.
- Fixed issue that prevented non-vRBT (Virtual Reality-Based Training) exercises from launching when the headset was still downloading vRBT content.

Coming soon

Axon VR training

- [Simulator Training: Range Skills](#) in Solo Mode will be available starting June 2025 for users in the United Kingdom, Australia, and New Zealand.
- Two trainees will soon be able to pair up and train together in the same tablet-facilitated exercise using their headsets.
- The Lag Time (TASER 10 only) and Drill Summary features from the [Simulator Training: TASER 10 VR Validation courses](#) will be included in applicable [Simulator Training: Range Skills exercises](#) starting June 2025.

Axon Justice

Working with folders

Users can now organize evidence with a folder organization system that provides improved visualization of the folder tree structure, a brand-new folder view, more efficient methods to organize evidence within folders with drag-and-drop functionality, and the ability to add evidence to multiple folders through a shortcut.

Launching to a small set of customers in early June and then to all Justice users in Q3. Reach out to your Axon representative for early access.

For more information, see [Working with Evidence Folders in Justice](#).

Improvement

Version 4.4 (May 2025)

Delivers powerful new capabilities and quality-of-life improvements to help agencies analyze, organize, and present digital evidence with greater clarity and efficiency.

New Language Support

Added interface support to improve global accessibility to the following languages:

- Hindi
- Turkish
- Danish
- Norwegian

Smarter Project Management

Clearer error messaging and refined UI text to improve the experience of adding files and folders into projects.

Metadata Tagging

Date/time values are now tagged on markers and clips, which helps users navigate and report evidence with better context.

Subtitle Stream Playback

New subtitle display icon appears on the timeline when videos contain subtitles or text overlay streams. These overlays are now visible during playback and can be exported directly on the video for courtroom-ready presentations.

Lens Distortion Correction Enhancements

Users can now choose to retain or crop parabolic edge detail in corrected images, which is essential for cases where edge information is critical. K1/K2 coefficient fields have been removed to streamline this new flexibility.

Major Updates to the Project Map Tool

- A redesigned snapshot capture button (now above the timeline) launches a new dialog to name the image and add location details.
- Tracking annotations (rectangle/ellipse) can now follow a subject or point of interest with brightness/contrast filters applied to improve clarity.
- Clip in/out markers allow users to capture clips directly from the map view, which are automatically saved to a dedicated folder and can be stitched into a final demonstrative output.

Fixes and Enhancements

- PDFs now open correctly in Presenter mode.
- On-screen text node now honors user-defined starting frame values.
- Marker auto-naming now includes date/time.
- Date/time display is now correctly synced on the Project Map timeline.
- Users can now switch between multiple camera views/streams within the Project Map tool.

Improved Role-Based Access (Axon Evidence integration)

For MFA-licensed users, agency administrators now control which users get access to Investigate, independent of the product feature flag, ensuring tighter permission control. Administrators get default access and can selectively enable functionality for others.

Note

Only applies to new users.

Axon Evidence Local version 5.2 (May 2025)

Summary of key updates

- [Evidence Map](#) [Evidence Map \(Web UI\)](#)

An interactive map experience is now available in the web UI, showing GPS data from Axon Body and Fleet cameras, synchronized with video playback.

New | **Improvement**

- [Evidence Clips](#)

Users can now create and manage video clips directly from the web interface, preserving original files while supporting editing, extraction, and sharing workflows.

New | **Improvement**

- [Unique Asset ID and Checksum Display](#)

The Unique Asset ID and Checksum are now shown directly on the Evidence Details page to support traceability and data integrity checks.

Improvement | **Admin**

- [Role-Based Device Profiles](#)

Admins can assign device configuration profiles to user roles, allowing body-worn cameras to apply settings such as volume, lights, and GPS based on role.

New | **Admin**

- [Manage Access from Evidence Search](#)

The Manage Access pane is now accessible directly from the Evidence Search results, with full permission enforcement and audit visibility.

Improvement | **Admin**

- [LDAP\(S\) Health Checker](#)

A new diagnostic tool in Server Manager now monitors LDAP and LDAPS connectivity, ensuring stable and secure Active Directory integration.

New | **Admin**

- [Dependencies](#)

Introduction

With the release of Axon Evidence Local 5, we fully transitioned from a desktop client application to a completely web-based experience. Building on that foundation, version 5.2 introduces new capabilities designed to further streamline and enhance the way digital evidence is managed in the web interface.

This release brings two major additions to the web interface: a redesigned Evidence Maps experience that displays location information synchronized with video playback, and Evidence Clips, which allows users to create shorter clips from longer videos for easier sharing and review.

Additional improvements include the Evidence Details Page, which now displays both the Unique Asset ID and the Evidence Checksum for greater traceability and data integrity. We've also introduced Device Profiles for Axon Body 3 and Axon Body 4 cameras, enabling organizations to control device settings based on user roles — ensuring consistent usage and improving operational efficiency.

The Manage Access feature has been enhanced and is now available directly from Evidence Search, enabling both single and bulk evidence access management. For system administrators, we've added a new LDAP/LDAPS Health Check and Management Tool within Server Manager, making server administration more visible and user-friendly.

Explore the details of each new feature below and enjoy the enhanced capabilities in Axon Evidence Local 5.2!

Evidence Map

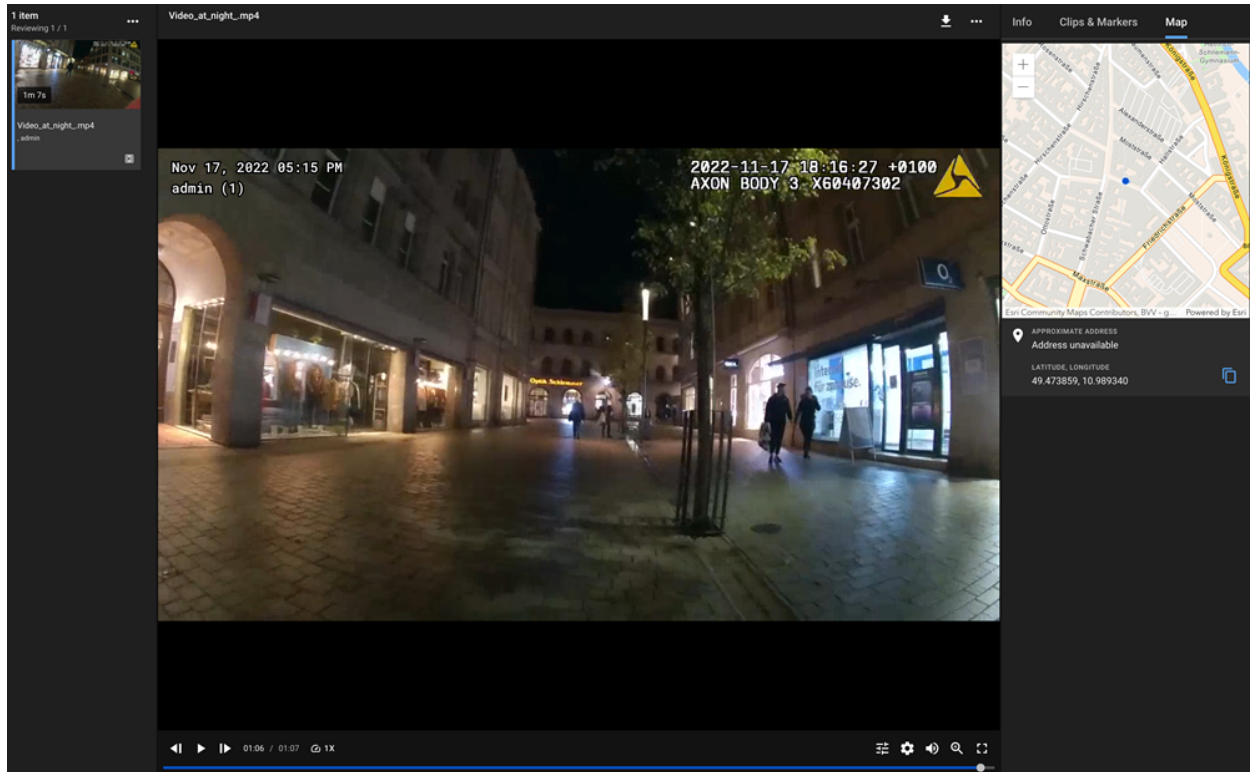
With this release, the Evidence Maps feature, previously available only in the Axon Evidence Local Desktop Client, has been completely redesigned for the web. The new web-based Evidence Maps experience displays geolocation data synchronized with video playback, offering enhanced visibility into the movement and location of Axon devices during a recording.

Evidence Maps are designed to show GNSS data captured by Axon body-worn cameras and Fleet cameras. This feature allows users to:

- Visualize location data associated with evidence files in real time.
- Sync movement data with video playback, showing exactly where the recording device was at any given moment.
- Track routes, stops, and key locations throughout the duration of the video.
- Gain context around movements and events - critical for investigations, reviews, and incident analysis.

This enhanced mapping capability improves situational awareness and supports more informed, efficient analysis of digital evidence.

Evidence Details Page (Review Mode)



Displays geolocation data for supported evidence types, synchronized with playback when available.

Close-Up of Evidence Map

Displays a detailed route view captured during vehicle movement, providing clear insight into the path taken while driving.

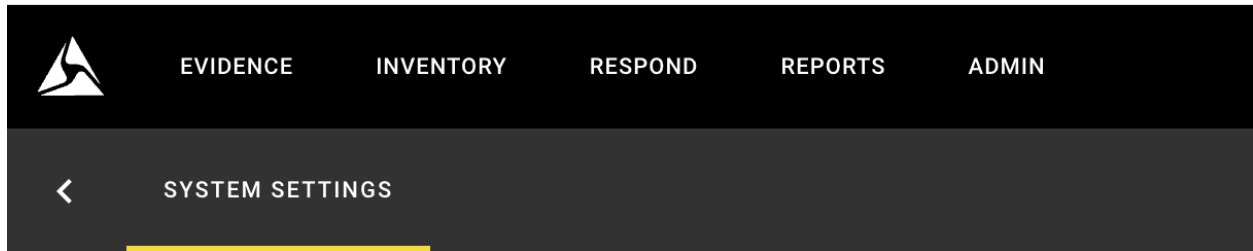


Map Admin Settings

To enable the Evidence Map feature or any other functionality that requires displaying a map, such as the Axon Respond Map or the map within the Device Details Page, configuration is required within the System Settings under Administration Settings.

In the Third-Party Services section, administrators can license and activate the Map Service, which powers map functionality across the system. This service uses the ArcGIS Location Platform to retrieve and display map data.

Note: To activate this feature, please work with your point of contact at Axon to obtain the necessary license keys. The Map Service must be enabled for maps to be visible throughout the product.



System Settings

Standard

Data Indexing

Third-Party Services

The following features rely on third-party services to provide in-product functionality.

Map Service

Enables map data to be displayed in Axon Respond, Evidence Details and Device Details pages by connecting to the ArcGIS Location Platform. This setting controls whether the Axon Evidence Local Server can connect to the ArcGIS Location Platform to retrieve map data.



OAuth2 Credential

CLIENT ID

Enter the Client ID from your ArcGIS account, or contact Axon for support.

0/255

CLIENT SECRET

Enter the Client Secret from your ArcGIS account, or contact Axon for assistance.

0/255

Evidence Clips

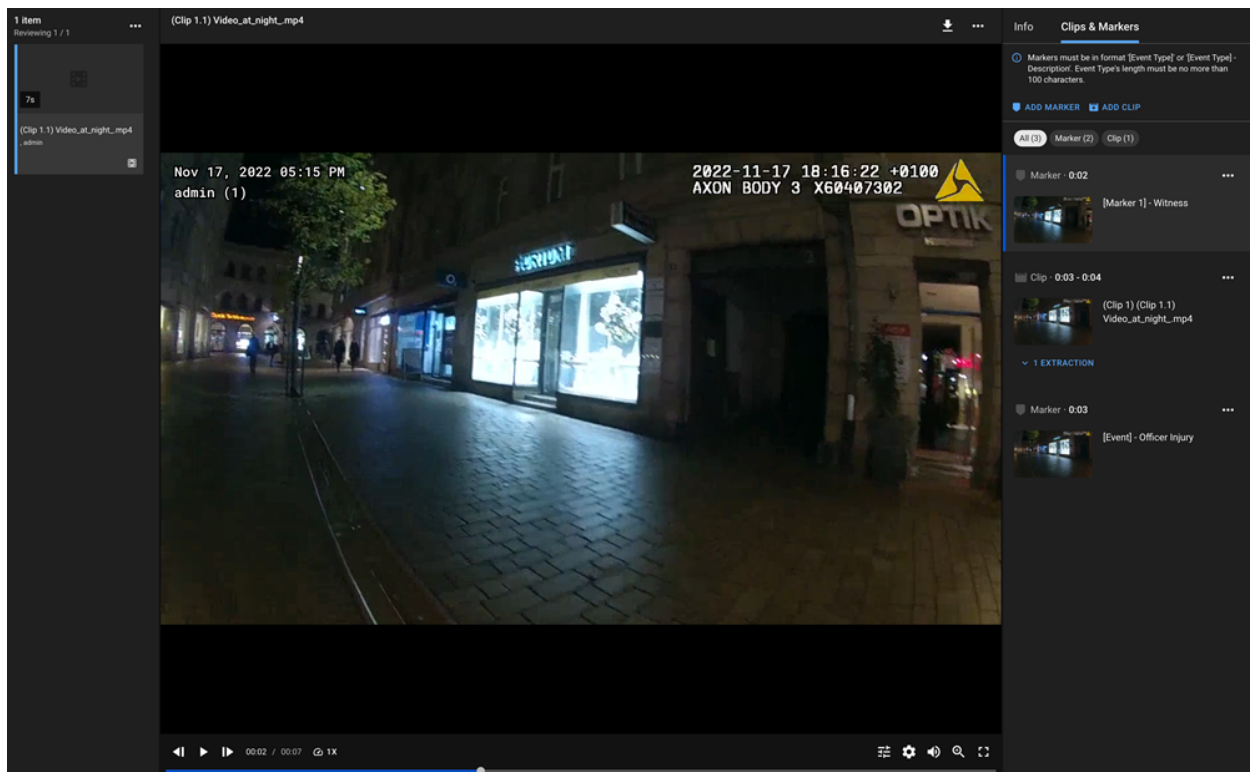
With this release, the Evidence Clips feature, previously available only in the desktop client during export, has been fully migrated to the Web UI of Axon Evidence Local. This powerful tool allows users to create and manage continuous segments (clips) derived from longer evidence files. Users can extract clips directly from the Clips & Markers tab on the Evidence Details Page.

The Clips feature enables authorized users to isolate specific moments from video evidence by selecting start and end points, without modifying the original file, ensuring the integrity of the evidence and preserving the chain of custody.

Key capabilities include:


- Adding metadata to clips, such as title, ID, description, and custom fields
- Downloading or securely sharing clips in standard formats
- Supporting workflows for court presentations, public records requests, training, and internal reviews
- Maintaining full access controls and audit trails

Evidence Details Page - Clips & Markers



Close-Up of Clips & Markers

Info **Clips & Markers**

 Markers must be in format '[Event Type]' or '[Event Type] - Description'. Event Type's length must be no more than 100 characters.

 **ADD MARKER**  **ADD CLIP**

All (3) Marker (2) Clip (1)

 Marker · 0:02 



[Marker 1] - Witness

 Clip · 0:03 - 0:04 



(Clip 1) (Clip 1.1)
Video_at_night_.mp4

✓ 1 EXTRACTION

 Marker · 0:03 



[Event] - Officer Injury

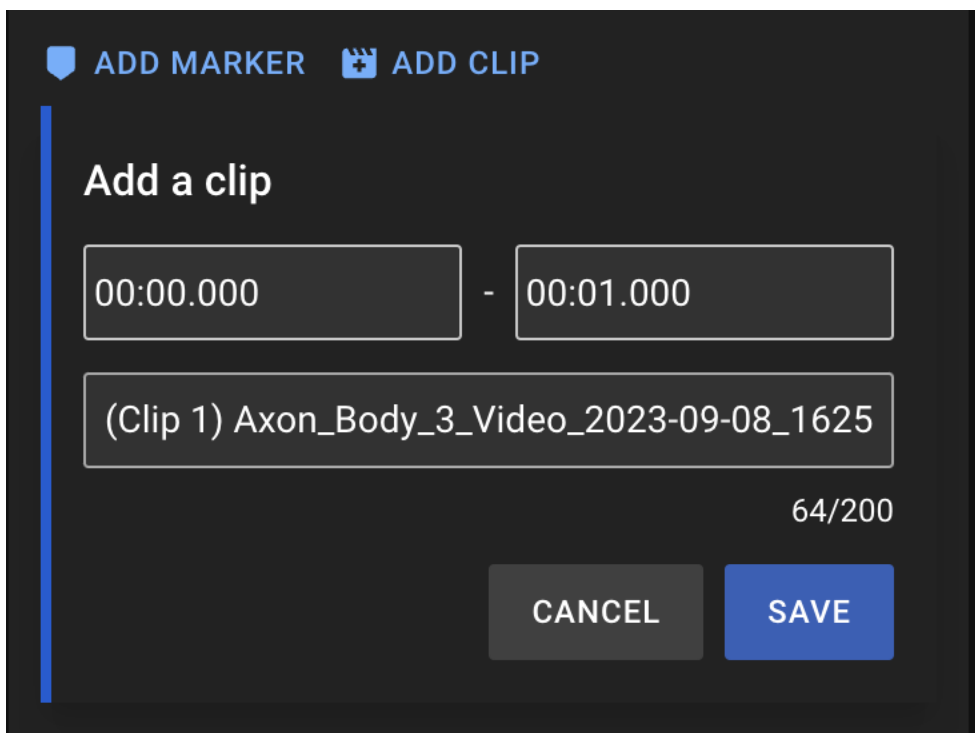
Permission Changes

This new feature also brings some changes to the existing permissions for creating, editing and deleting markers, as we integrated clips into these permissions:

- **Create and edit markers** permission was renamed to **Create and edit clips and markers**.
- **Delete markers** permission was renamed to **Delete clips and markers**.

Adding a Clip

Adding a clip to an audio or video file is done in the same way as adding a marker, by clicking the **ADD CLIP** button in the Markers tab on the right-hand side of the Review

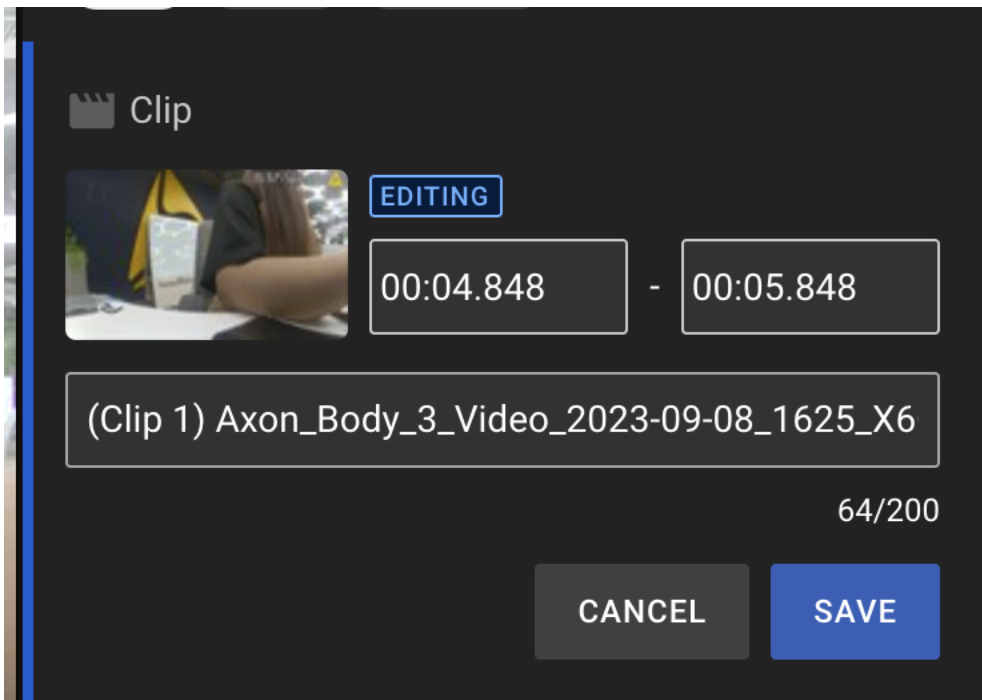


The screenshot shows a dark-themed dialog box titled "Add a clip". At the top, there are two buttons: "ADD MARKER" with a shield icon and "ADD CLIP" with a plus icon. Below the title, there are two input fields for timestamps: "00:00.000" and "00:01.000", separated by a minus sign. Below these is a larger text input field containing the text "(Clip 1) Axon_Body_3_Video_2023-09-08_1625". To the right of this field, the character count "64/200" is displayed. At the bottom of the dialog, there are two buttons: "CANCEL" and "SAVE".

screen.

Editing a Clip

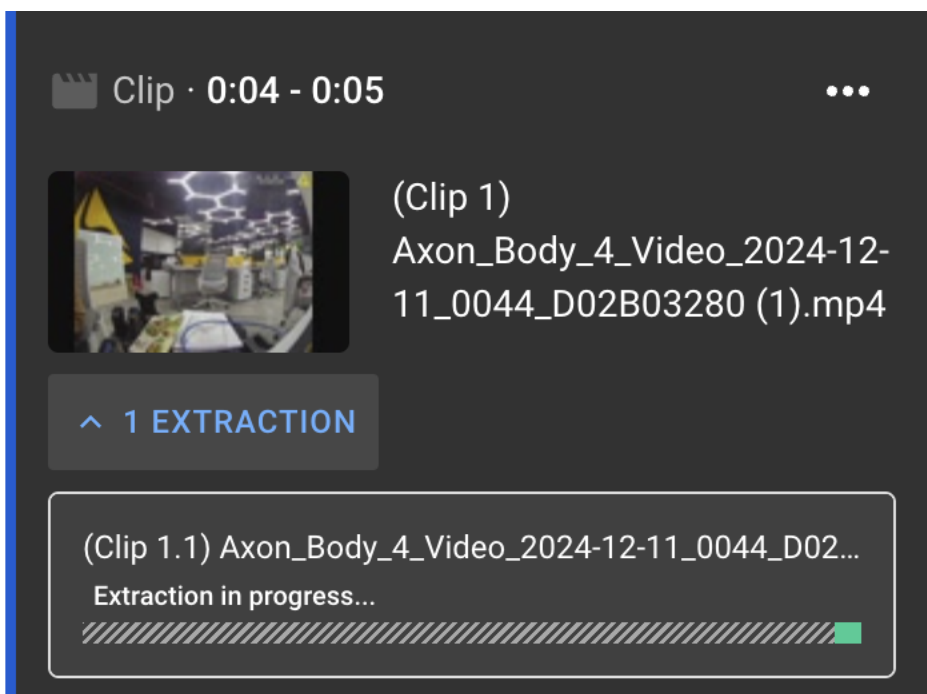
Clips can be edited by selecting **Edit** in the action menu to edit the title as well as the exact timestamp. This function is only available when the user has the **Create and edit clips and markers** permission.

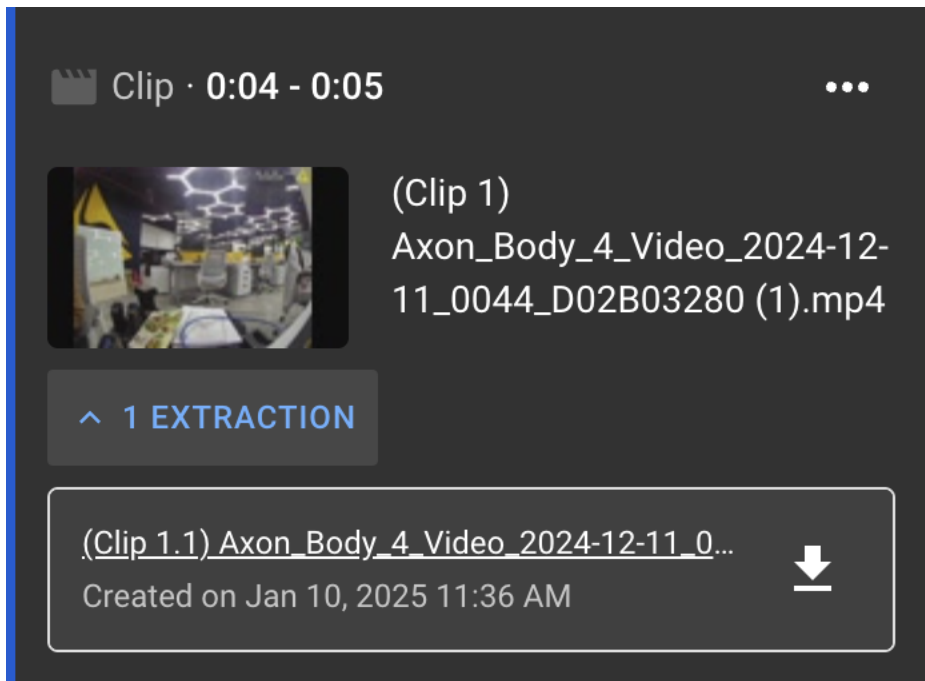


Extract Clip as a New Evidence

Clips can be extracted as a new piece of evidence by clicking the **Extract** button in the action menu.

When a user clicks on **Extract**, a message will inform the user about the process and the extraction item will be shown with a linear progress bar, directly under the clip itself.





The extraction's title can be clicked which will open a new tab to view that extraction as a separate evidence in the review mode.

Audit Trails

All user actions with clips (create, edit, delete, and extract clip) are logged into the evidence audit trail, user audit trail, and system audit trail.

Note:

- There is a maximum file size limit for evidence files of 35 GB for the clips function. If a file exceeds this limit, the clips function will not be available.
- GPS data from the original (parent) file is not carried over to the extracted clips.

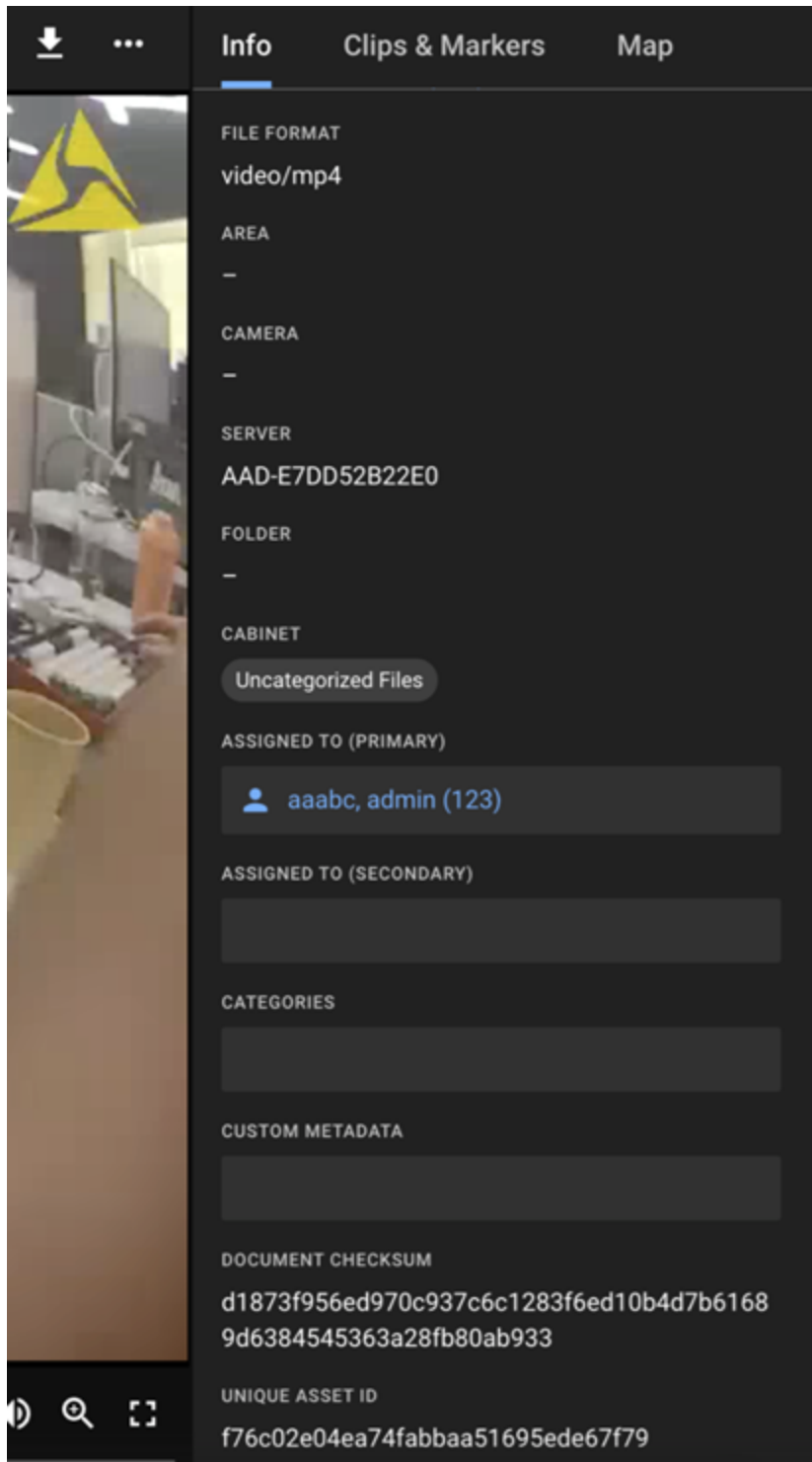
Unique Asset ID and Checksum

With this release, the Unique Asset ID and Evidence Checksum are now directly visible on the Evidence Details page, making evidence management more transparent and user-friendly. These identifiers are displayed in the metadata "Info" tab on the right side of the page.

- The Unique Asset ID plays a critical role in uniquely identifying each piece of evidence.

- The Evidence Checksum ensures and demonstrates the integrity of the evidence by verifying that it remains original and unaltered.

Previously, the Evidence Checksum was only available in the Evidence Audit Trail. Now, both the Unique Asset ID and Checksum are accessible in the main evidence view as well, reinforcing traceability and reliability in the two primary areas where users interact with digital evidence.





Evidence Audit Trail

Audit Generated By: aaabc, admin (123)

Document Generated: 2/26/2025 11:59:31 AM

Evidence checksum: SHA256-d9509648ad894b4a17bf3e4d01215e90a3683def511008e44c11e8daa82f5cb8

Unique Asset ID: 790e0c7f77034c278a8350cfabd6804c

Role-Based Settings and Device Profiles for Axon Body 3 and Axon Body 4

With this release, Device Profiles and Role-Based Settings have been added to the product.

Overview

Device profiles allow for the customization and administration of device settings specific to different roles, rather than having a universal configuration for all devices. This allows for the following improvements:

1. Device Profile Configuration

- a. Device profiles allow you to apply different configuration settings to Body-Worn Cameras (AB3, AB4) based on predefined profiles.
- b. They allow for specific configurations like speaker volume, light indicators, vibration settings, and more.

2. User Roles

- a. Creating and specifying
- b. Assigning users

3. Linking them together

- a. Profiles can be linked to specific user roles. For instance, an AB3's default device profile can be linked to the specific role of a user group, and similarly for AB4.
- b. This ensures that the devices are configured appropriately based on the role of the user, leading to more efficient and effective usage in various operational contexts.

4. Syncing and Updating

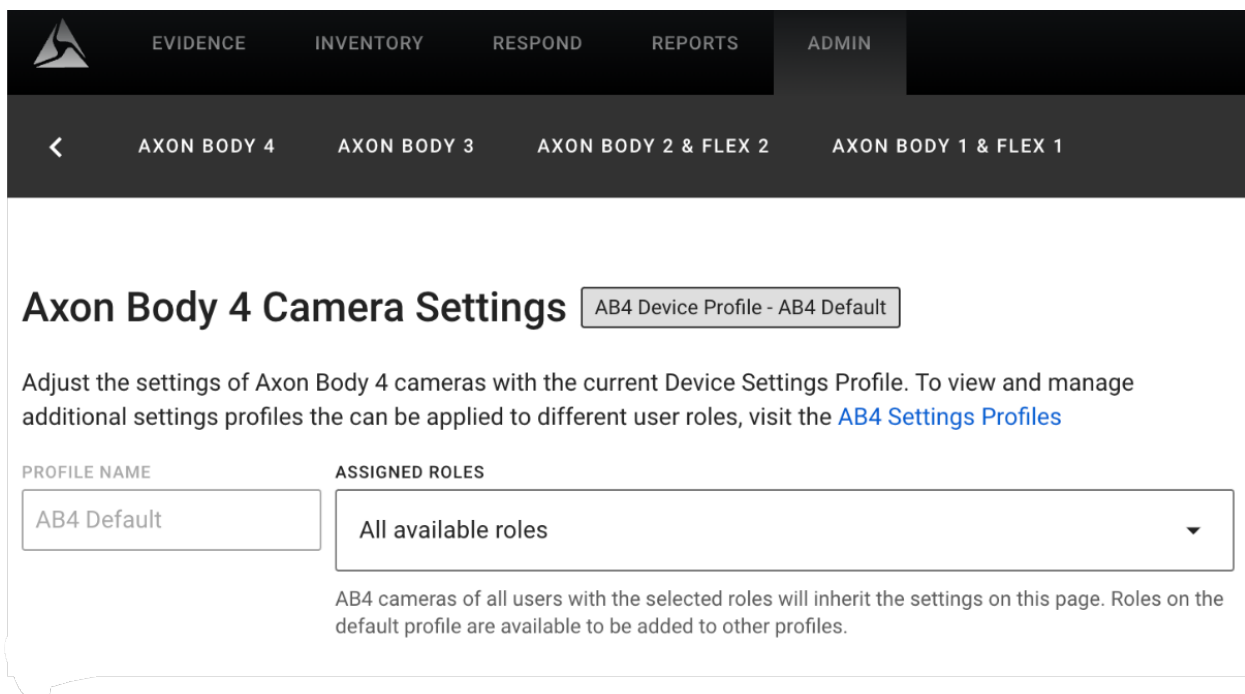
- a. The settings established in device profiles will sync and update to the respective devices, ensuring consistency in device operation.

5. Device Management

- a. Device profiles simplify the management of multiple units within a single server by providing more granular control over the device settings.
- b. This differentiation is crucial for operational needs where different groups or units may require unique device settings.

Axon Body 4 Camera Settings

Note: Existing settings will be transferred to the default profile of the device (i.e., “AB4 Default” as seen in the image above) when updating to this version of Axon Evidence Local. “Role” is now also a required field when adding new users. Roles can be added via the “Roles” page under System Administration.



Axon Body 4 Camera Settings AB4 Device Profile - AB4 Default

Adjust the settings of Axon Body 4 cameras with the current Device Settings Profile. To view and manage additional settings profiles the can be applied to different user roles, visit the [AB4 Settings Profiles](#)

PROFILE NAME	ASSIGNED ROLES
AB4 Default	All available roles

AB4 cameras of all users with the selected roles will inherit the settings on this page. Roles on the default profile are available to be added to other profiles.

User Roles

System Administration

Users

[All Users](#)

[All Groups](#)

File Configuration

[Folders](#)

[Cabinets](#)

[Custom Metadata](#)

[Associations](#)

[File Extensions](#)

Storage Configuration

[Destinations](#)

[Locations](#)

[Ingestions](#)

Agency Settings

[Device Home](#)

[Roles](#)

[System Settings](#)

Devices

Body Camera

[Axon Body 4](#)

[Axon Body 3](#)

[Axon Body 2 & Flex 2](#)

[Axon Body 1 & Flex 1](#)

Fleet

[Axon Fleet 1 & 2](#)

[Axon Fleet 3](#)

TASER Energy Weapon

[TASER 10](#)

[TASER 7](#)

[TASER X2 & X26P](#)

Signal

[Signal Vehicle](#)

[Fleet 3](#)

[TASER Weapon](#)

Respond

[Respond Settings](#)

Applications

[Axon Capture](#)

During the upgrade, a new role called "Default" (as shown in the image below) will be introduced into the system, and all existing users will be assigned to this role.

Roles

[CREATE ROLE](#)

Role Name	Users In Role	Date Created
Default	51	04/28/2025

Creating a new role requires no more than a role name, which can be edited afterward.

Create Role
×

ROLE NAME *

❗ This field is required
0/255

CANCEL
CREATE

Roles can be assigned to individual users via the “Users” page, by selecting the user and editing the user context. Bulk assigning or updating roles can also be done by selecting multiple users and clicking on the **UPDATE ROLE** button.

Users

UPDATE ROLE
ADD USER
IMPORT USERS

51 results | 51 selected

<input checked="" type="checkbox"/>	Badge ID ↓	Name	Username	Role	Group	Status
-------------------------------------	------------	------	----------	------	-------	--------

In the appearing side bar dialog, the role can be selected:

Update role
×

ROLE *

Select

Default

Supervisor

CANCEL
UPDATE

Manage Access Evidence Search

With this release, the "Manage Access" feature and workflow is now also available on the Evidence Search page. It provides the same functionality as within the Evidence Details Page window for each piece of evidence, providing instant visibility into the number of

users with access. The MANAGE ACCESS dialog appears when a piece of evidence is selected on the upper right-hand corner of Evidence Search.

Evidence REVIEW UPDATE ID ADD CATEGORY ADD CUSTOM METADATA SEND TO **MANAGE ACCESS** ...

121 results | 1 selected

☰ ☐ ⚙

100 per page ▾

<input type="checkbox"/>	ID	Title	Owner	Uploaded By	Uploaded On	Recorded On ↓	Duration	Category	Status
<input checked="" type="checkbox"/>	+ ADD	📹 Axon Body 4 + Flex Video 20...	-	-	Apr 24, 2025 8:57 AM	Apr 24, 2025 8:55 AM	15s	-	Active
<input type="checkbox"/>	+ ADD	📹 Axon Body 4 Video 2025-04-...	-	-	Apr 24, 2025 8:57 AM	Apr 24, 2025 8:54 AM	11s	-	Active

When the MANAGE ACCESS tab is clicked, a side pane opens up, providing the same options as in the Evidence Details Page:

Manage Access ✕

Inherits security settings from cabinets and folders placed into

USER OR GROUP

ACCESS

Allowed ▾

ADD

Type	Name	Access

Editing Access

Editing permissions depend on specific conditions:

- Users can edit the access list if they have the "Manage cabinets, folders, and files" permission.
- If they do not have this permission, they can only edit if they:
 - Are assigned to the asset, and
 - Have the "Manage Security for assets that user is owner of" permission.
- If neither condition is met, the user cannot edit the access list.

Additionally, the "Inherit security settings from cabinets and folders" checkbox is always visible but can only be edited if the user has the "Manage cabinets, folders, and files" permission.

LDAP(S) Health Checker and Management Tool

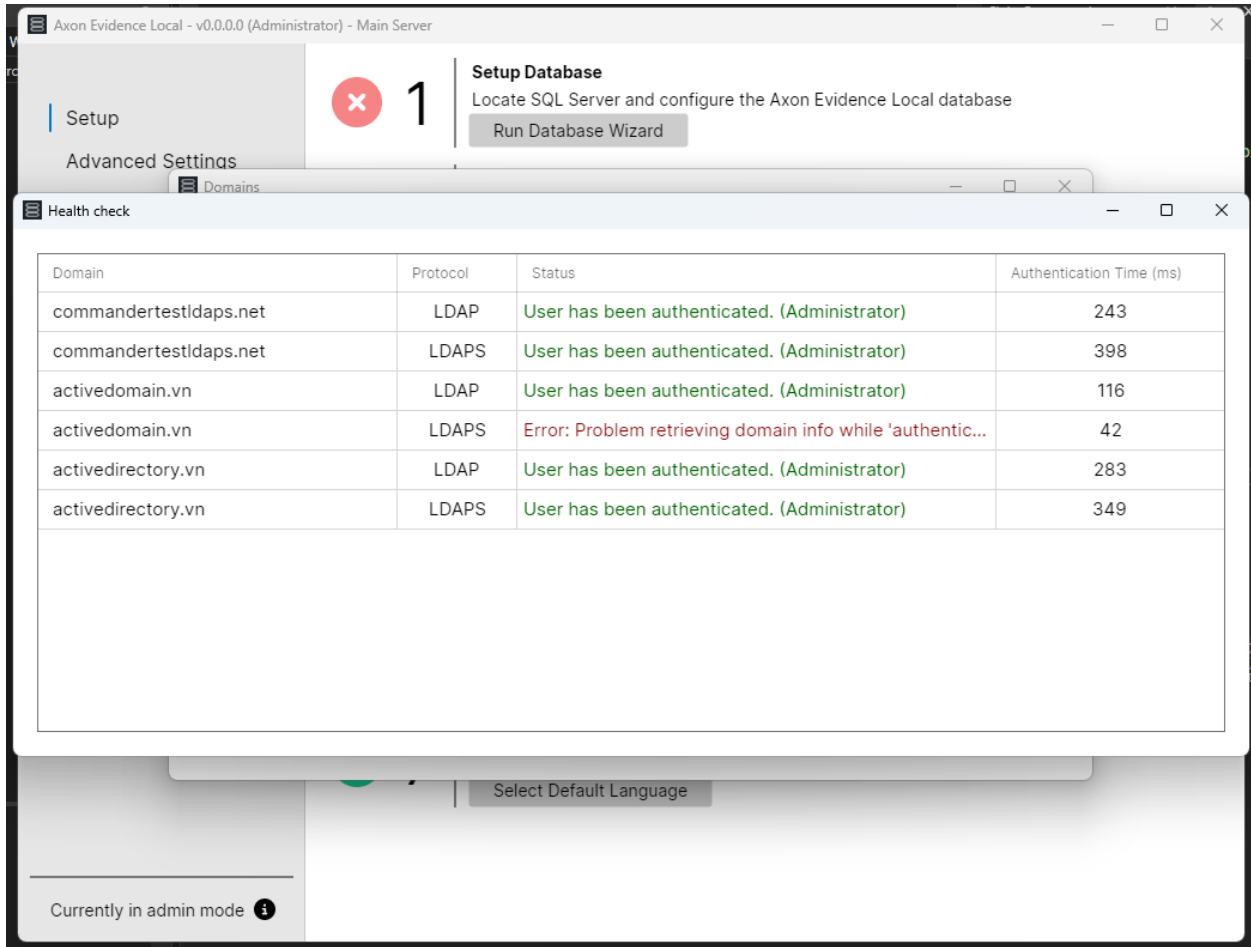
This release introduces a new tool for managing and monitoring the integration between Axon Evidence Local and Active Directory. Evidence Local now supports connectivity via both LDAP and LDAPS, automatically detecting and applying the appropriate protocol based on the server configuration.

Key Features of the new Management Tool:

- **Monitoring:** The health checker continuously monitors the Active Directory connection to ensure stable and secure communication.
- **Diagnostic Tools:** Enhanced diagnostic capabilities allow for thorough testing and troubleshooting of LDAP and LDAPS connections.

These features enhance monitoring and visibility, supporting seamless integration between Axon Evidence Local and an agency's Active Directory environment. The Health Check functionality is available in "Step 7: Domain Configuration" of the Axon Evidence

Local Server Manager.



Dependency and Compatibility Overview

Devices Firmware

Devices	Supported FW Version
AB2 / Flex2	1.28
AB3	1.34.45 1.35.58 1.2504.1
AB4	1.2504.15 1.2450.15

Devices	Supported FW Version
AB 2 / Flex 2 / TASER Dock	3.20.240801.0336
Flex 2 Controller	0.7.3
Fleet 3	v2.2502.3715
TASER 7	2.0.6
TASER 10	1.5.39
TASER Dock Charger	2.7.13
TASER BLE Bundle	1.4.2

Applications

Application	Supported App Version
Axon Device Manager iOS	3.2.6
Axon Device Manager Android	3.14.4
Axon View iOS	6.7.0
Axon View Android	6.5.1
Axon Capture iOS	5.15.3
Axon Capture Android	5.17.1
Axon Device Checkout iOS	2.0.6
Axon Device Checkout Android	1.1.0
Axon ViewXL	1.28.3 (version 1.31 – Planned viewXL GA: May 12)
Axon Interview	4.16.4.7

Other Dependencies

- Evidence Local Server: Windows Server 2019, 2022
- Evidence Local Web Client: Firefox, Chrome, Edge
- Database: Microsoft SQL Server 2019
- Upgradable from Evidence Local version: 4.50, 4.52, 5.0

Change log

The table below contains a log of all changes made to these release notes.

Date	Product	Description of change
May 20, 2025		Initial notes created
May 28, 2025		Release dates updated

If you have any questions about the information in this release, contact your Axon representative or Technical Support.

1-800-978-2737 ext. 4

support@axon.com

Do you have feedback about Axon's release notes? Submit it [here](#).

Sincerely,

The Axon Team

Axon Enterprise, Inc.