

Enhanced Hook and Loop Training (HALT) Suit Quick Reference Guide and Warnings

Introduction

The Enhanced HALT suit is intended for scenario-based training exercises in conjunction with Soft Contact Cartridges and TASER 7 and TASER 10 HALT cartridges.

⚠ WARNING

The Enhanced HALT suit is designed for use with Soft Contact Cartridges (for the M26, X2, X26, and X26P conducted energy weapons) and TASER 7 and TASER 10 HALT cartridges ONLY. While the TASER 7, X2, X26, and X26P HALT and soft contact cartridges use non-conductive probe wires, they do not stop electrical current, and therefore using drive-stun (with or without a TASER cartridge attached), or deploying probes from other than a Soft Contact or HALT cartridge may result in an incapacitating effect and/or pain to the wearer.

The Enhanced HALT suit is distinguished from previous-generation HALT suits with a red tag attached to the helmet, jacket, mitts, pants, and pads. Do not use older HALT suits lacking this tag in TASER 10 training.



Soft Contact Cartridges (for the M26, X2, X26, and X26P energy weapons) have purple blast doors. (Soft Contact Cartridges may not be available for sale in your region or

country.) TASER 7 HALT cartridges have blue blast doors. TASER 10 HALT cartridges have a blue sleeve and are loaded in a blue magazine.

The Enhanced HALT suit was designed for authorized TASER instructor-led training or exhibition. The Enhanced HALT suit is designed for training exercises only, and is not to be used on duty.

Do not wear the helmet in a way that causes the visor to touch the face.

Wear all parts of the suit for TASER training scenarios.

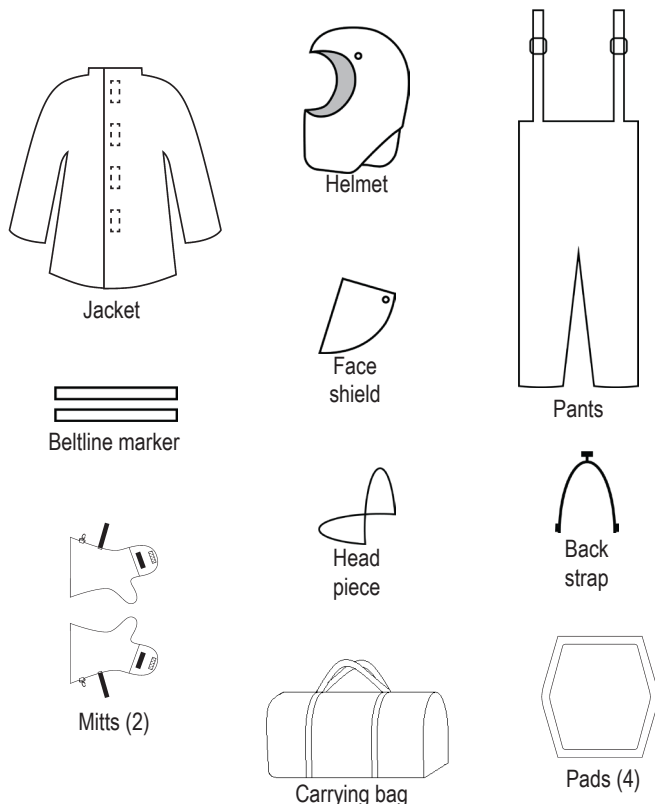
The Enhanced HALT suit is susceptible to wear and damage. Do not use an Enhanced HALT suit that no longer provides all over protection against HALT or soft contact probe hits.

Do not put tape on the Enhanced HALT suit or otherwise modify the Enhanced HALT suit.

The mitts have an opening on the palm sides to make it easier for you to grasp or manipulate objects, if necessary. When wearing the Enhanced HALT suit, avoid turning palms toward a student's energy weapon.

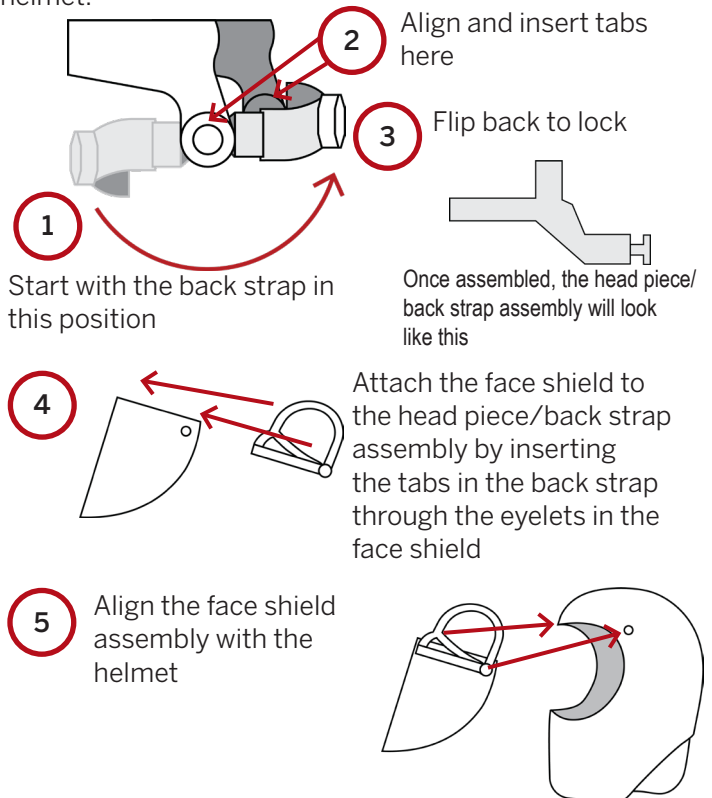
The Enhanced HALT Suit

The Enhanced HALT suit includes 14 pieces and a carry bag for easy transport.

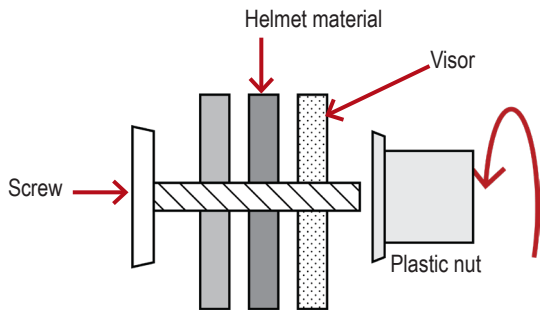


Assembling the Helmet

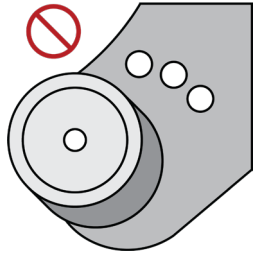
Attach the head piece to the back strap before attaching them to the face shield. Then attach the face shield to the helmet.



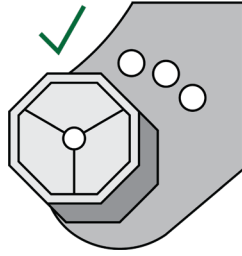
- 6 Use the plastic nut and screw to fasten the visor to the helmet.



It is important to install the plastic nut correctly:



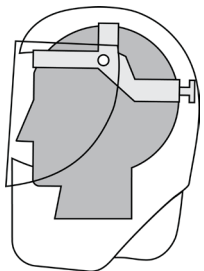
Hood falls down when you flip it up



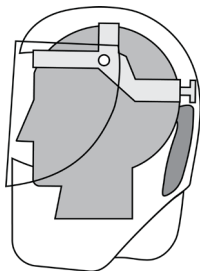
Hood stays up when you flip it up

Use the hook-and-loop fastener on the lower front of the face shield to secure it to the helmet interior.

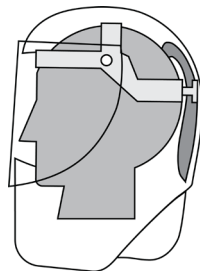
Always ensure the helmet straps are properly positioned with the strap adjusted to fit comfortably around the head. Use the knob on the back of the back strap to tighten or loosen the fit, as needed.



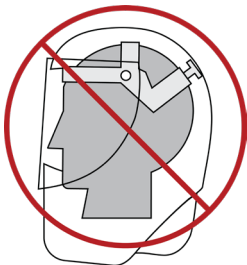
Short hair



Long hair
(option 1)



Long hair
(option 2)



Wearing the Enhanced HALT Suit

Ensure the suspenders are affixed properly so the bib of the pants cover as much of the torso as possible. The bottom of the pant legs should overlap the top of the shoes, completely covering the ankle.

Always wear the jacket over the pants. The jacket is designed to fit loosely and provide an air gap, thus providing additional protection against impact. Always adjust the suit so it is not too loose or too tight for you.

Wear the helmet over the jacket.

Wear the mitts over the jacket sleeves. The mitts have an elastic strap with hook-and-loop material that can tighten the mitts around your forearms and keep the mitts in place. The strap also can be attached to the lower sleeve of the jacket. Experiment to determine which method works best for you. (The mitts also have a hook clasp at the end so they can be kept together during storage and transport.)

The 6-sided pads are designed to be used on the knees and elbows. They may be attached to other parts of the suit to provide extra cushioning against probe impacts, if desired. These pads are a new feature with the Enhanced HALT Suit.

Maintenance

After using the Enhanced HALT suit, hang it up to dry out. If the suit becomes dirty, it can be machine-washed on a low-temperature setting (under 140 °F/60 °C), using mild detergent. Remove the face shield before washing the suit. Do not use a cleaner that has chlorine or bleach in it. Air dry the suit or tumble dry it with a low setting.

The carrying bag can be cleaned with spray cleaner or detergent and water. Treat oil or grease stains with a dry cleaning solvent and then use a spray cleaner or detergent and water.

Do not use a cleaner that has chlorine or bleach in it.

Non-Axon trademarks are property of their respective owners.

▲, TASER, TASER 7, TASER 10, X2, X26, X26P, and ⚡ are trademarks of Axon Enterprise, Inc., some of which are registered in the US and other countries. For more information visit www.axon.com/legal. All rights reserved. © 2024 Axon Enterprise, Inc.

October 2024

MPC0296 Rev: B

