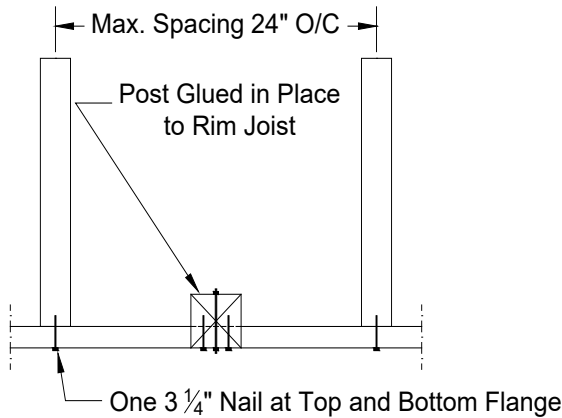




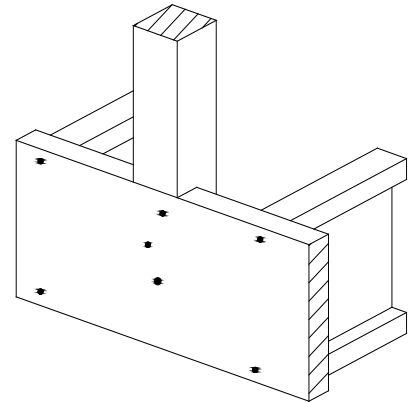
**Technical Note**

**Interior Connection: Notched Post Glued and Bolted to Rim Joist (IB-1)**

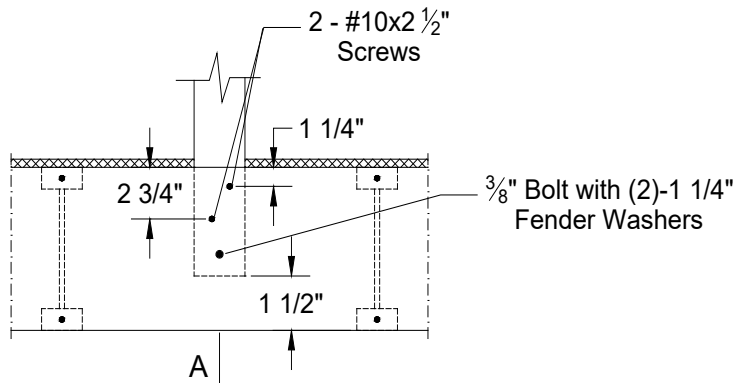
PLAN



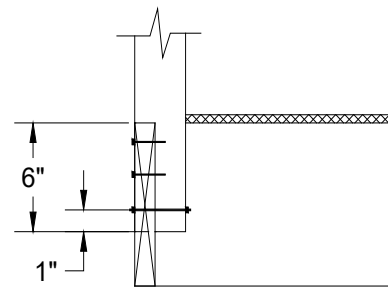
AXONOMETRIC



FRONT ELEVATION



SECTION-A



**Notes:**

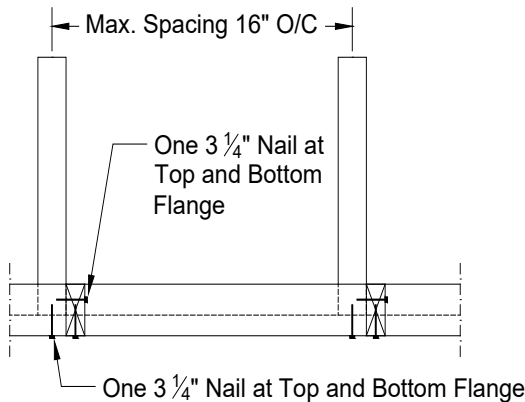
- Detail meets the requirements of **IB-1, SB-7 of the OBC 2012, May 12, 2023 update**
- Post minimum grade: Northern species, No.2
- Post minimum dimensions: 3 1/4" x 3 1/4"
- Notch at rim joist: 1 1/2" x 6"
- Minimum size of floor joists: 2" x 8" nominal
- I-Joists shown should be Boise's AJS/BCI series
- Rim joist should be 1 1/8" OSB rimboard or 1 3/4" Boise's Versa-Lam
- Minimum size of subfloor: 5/8" plywood or equivalent
- Maximum post spacing = 10'-10" (as per IB-1 of SB-7 of the OBC 2012)
- Guards Heights should be in accordance with the requirements in the supplementary Standard SB-7 (OBC 2012)
- Guards should be designed to resist the loads specified in SB-7 of the OBC 2012 (Table 9.8.8.2)



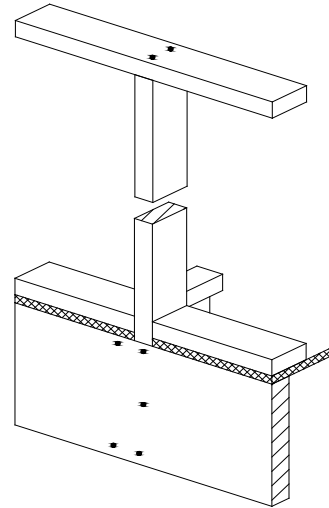
**Technical Note**

**Interior Connection: Wood Stud and Gypsum Board Guard (ID-1)**

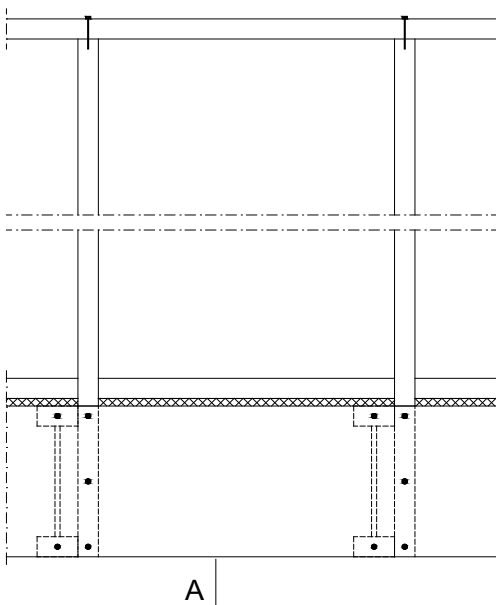
PLAN



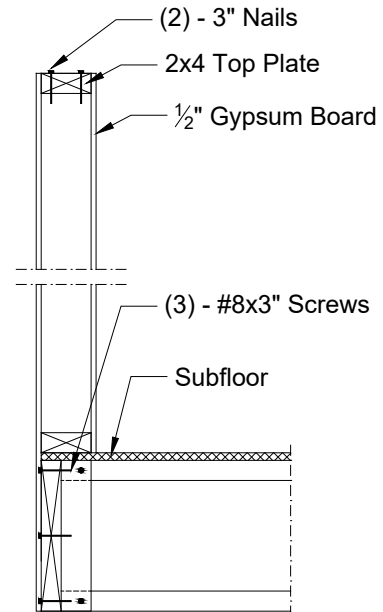
AXONOMETRIC



FRONT ELEVATION



SECTION- A



**Notes:**

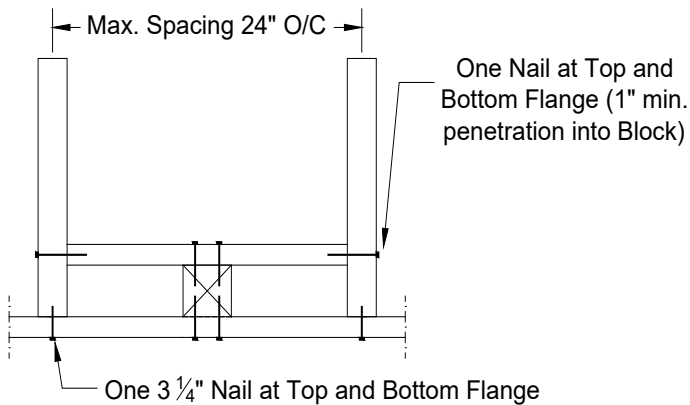
- Detail meets the requirements of **ID-1, SB-7 of the OBC 2012, May 12, 2023 update**
- Stud minimum grade: Northern species, No.2
- Notch stud at rim joist as shown
- I-Joists shown should be Boise's AJS/BCI series
- Rim joist should be 1 1/8" OSB rimboard or 1 3/4" Boise's Versa-Lam
- Minimum size of subfloor: 5/8" plywood or equivalent
- Fasten subfloor to joists with 2" nails at 6" o.c. along edges and 12" o.c. along intermediate supports
- Maximum stud spacing = 16" (as per ID-1 of SB-7 of the OBC 2012)
- Guards Heights should be in accordance with the requirements in the supplementary Standard SB-7 (OBC 2012)
- Guards should be designed to resist the loads specified in SB-7 of the OBC 2012 (Table 9.8.8.2)



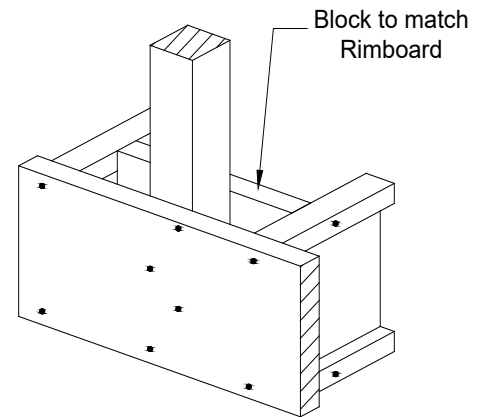
**Technical Note**

**Exterior Connection: Post Screwed to Rim Joist (EB-2)**

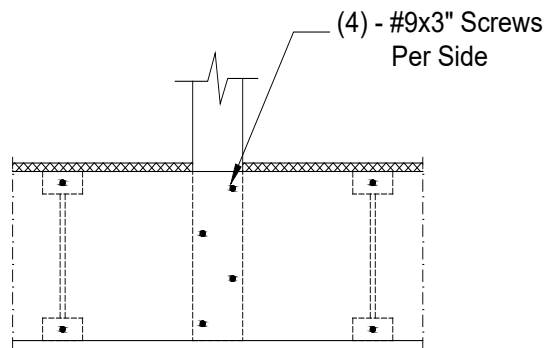
PLAN



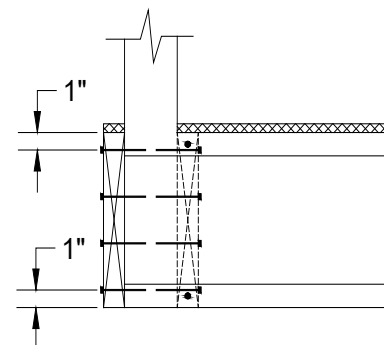
AXONOMETRIC



FRONT ELEVATION



SIDE ELEVATION



**Notes:**

- Detail meets the requirements of **EB-2, SB-7 of the OBC 2012, May 12, 2023 update**
- Post minimum grade: Northern species, No.2
- Post minimum dimensions: 3 1/4" x 3 1/4"
- I-Joists shown should be Boise's AJS/BCI series
- Rim joist should be 1 1/8" OSB rimboard or 1 3/4" Boise's Versa-Lam
- Minimum size of subfloor: 5/8" plywood or equivalent
- Maximum post spacing = 5'-1" (as per EB-2 of SB-7 of the OBC 2012)
- Guards Heights should be in accordance with the requirements in the supplementary Standard SB-7 (OBC 2012)
- Guards should be designed to resist the loads specified in SB-7 of the OBC 2012 (Table 9.8.8.2)

*Boise's products are intended for **dry service conditions**. "Dry service" is defined as the in-service environment under which the equilibrium moisture content (MC) of lumber is 15% or less over a year and does not exceed 19% at any time. Products used in interior or open protected applications qualify as conditions of dry use.*