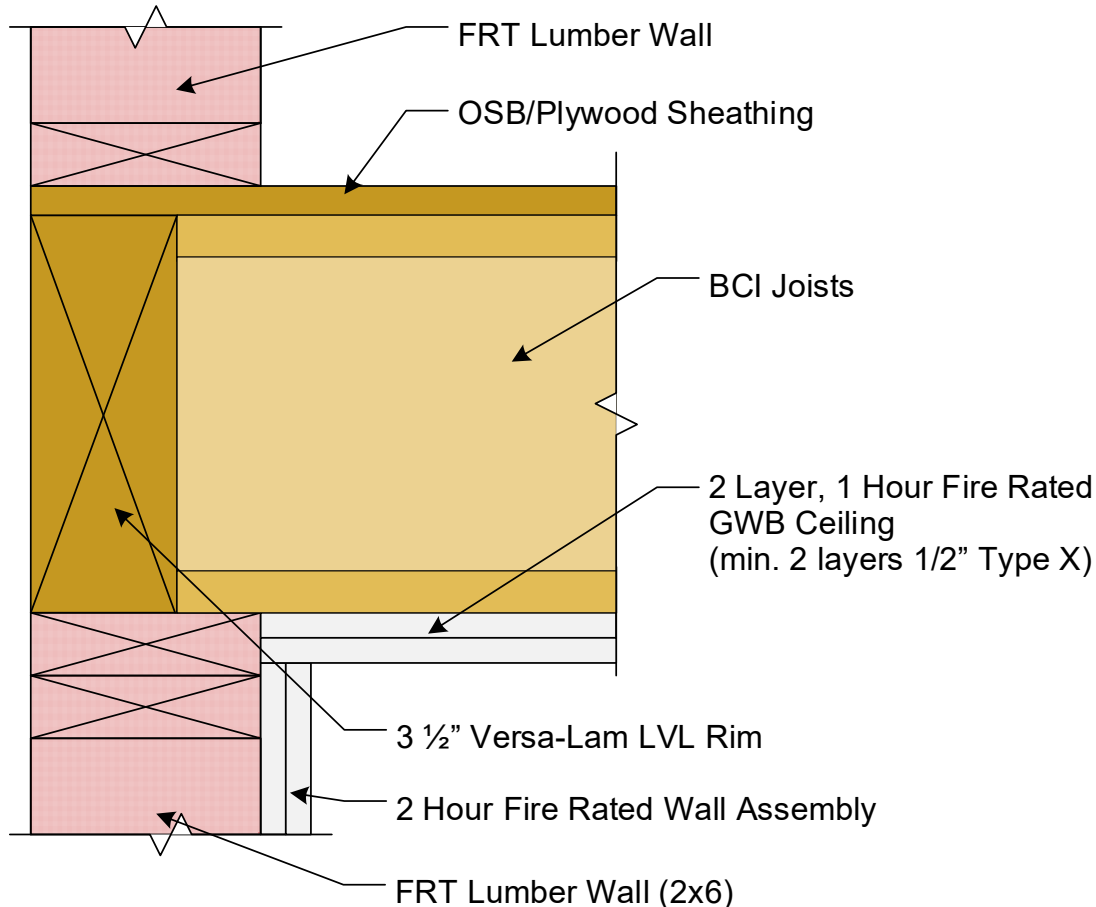




The following details provide code approved, non-fire-retardant treated rim board options for Type IIIA Construction exterior wall / floor intersections.

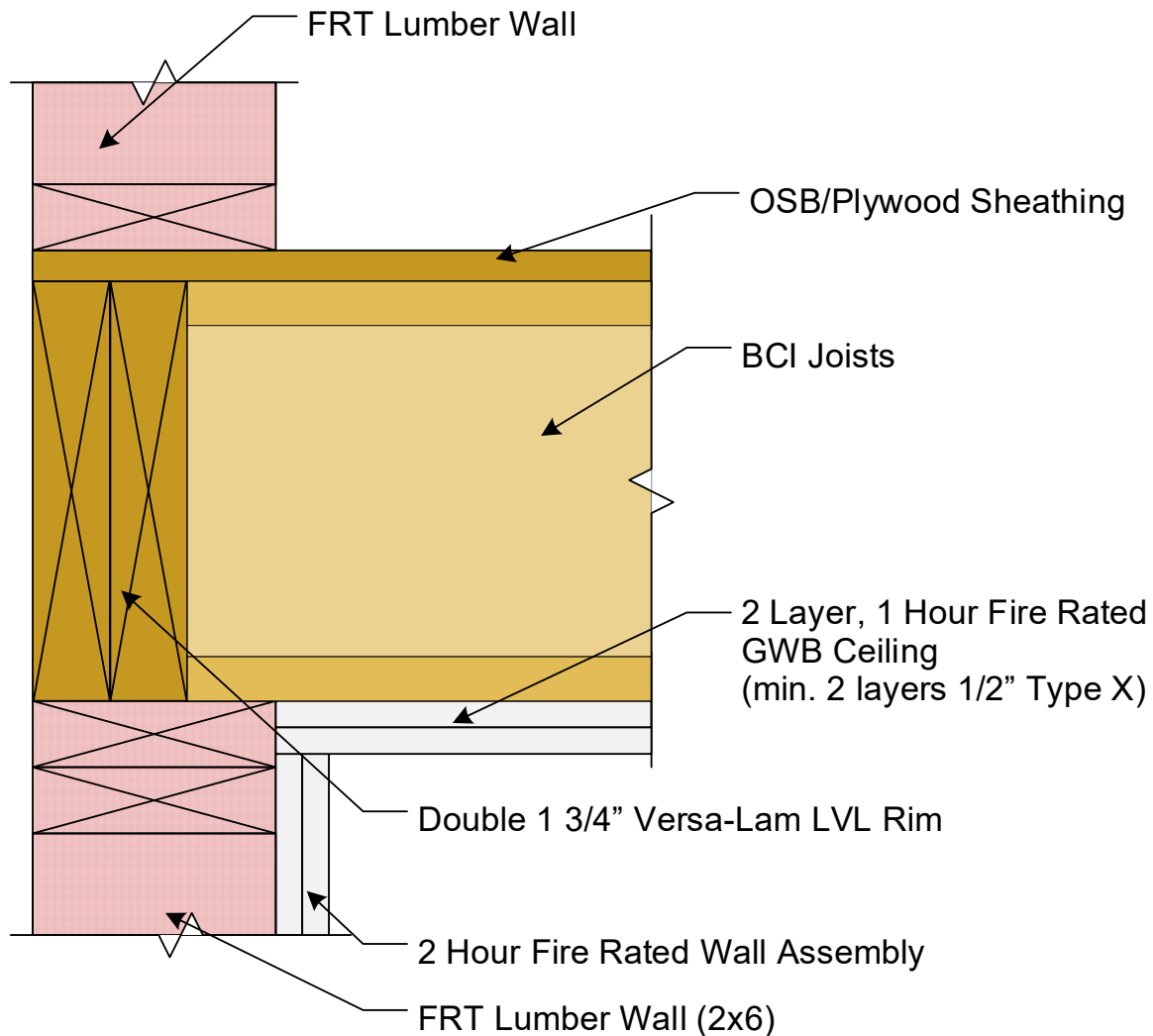
**Detail #1: 3 1/2" Versa-Lam® LVL Rim / 1 Hour Fire Rated Ceiling**



**Notes:**

1. Fire resistance for exposure from interior side: Two layer ceiling plus additional 1 3/4" sacrificial wood thickness in rim member provides at least 120 minutes protection per 2015/2018/2024 NDS Chapter 16. Remaining portion of Versa-Lam LVL rim board supports the load from the wall above. Vertical uniform capacity: 16" max depth: 5700 lb/ft (VL 2.1E), 4250 lb/ft (VL 1.8E). 20" max depth: 4300 lb/ft (VL 2.1E), 3700 lb/ft (VL 1.8E).
2. Fire resistance for exposure from exterior side: Where required per IBC Section 705.5, a combination of exterior fire protection and FRTW sheathing (not shown), and a portion of the rim board thickness is used to provide 120 minutes of protection. Remaining portion of Versa-Lam LVL rim board supports the load from the wall above.
3. Detail complies with 2024 IBC sections 705.6 and 705.7.1, and AWC DCA3 Fire-Resistance-Rated Wood-Frame Wall and Floor/Ceiling Assemblies, February 2024, Figure 1C.
4. BCI joists shall be protected from moisture exposure before and during installation.

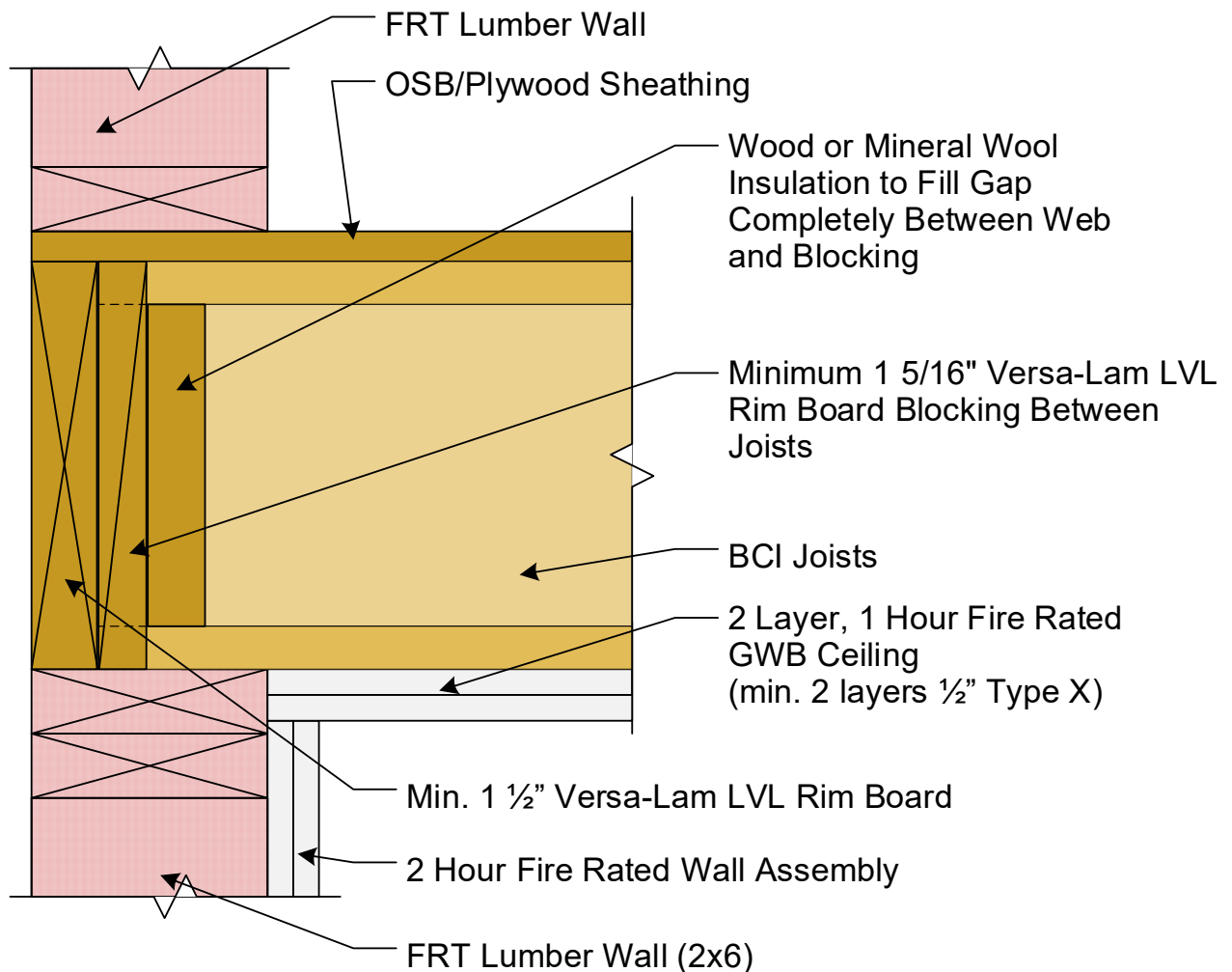
**Detail #2: Double 1 3/4" Versa-Lam® LVL Rim / 1 Hour Fire Rated Ceiling**



**Notes:**

1. Fire resistance for exposure from interior side: Two layer ceiling plus additional 2.0" sacrificial rim thickness provides at least 120 minutes protection per 2015/2018/2024 NDS Chapter 16. Remaining portion of Versa-Lam LVL rim board supports the load from the wall above. Vertical uniform capacity: 16" max depth: 5700 lb/ft (VL 2.1E), 4250 lb/ft (VL 1.8E). 20" max depth: 4300 lb/ft (VL 2.1E), 3700 lb/ft (VL 1.8E).
2. Fire resistance for exposure from exterior side: Where required per IBC Section 705.5, a combination of exterior fire protection and FRTW sheathing (not shown), and a portion of the rim board thickness is used to provide 120 minutes of protection. Remaining portion of Versa-Lam LVL rim board supports the load from the wall above.
3. Detail complies with 2024 IBC sections 705.6 and 705.7.1, and AWC DCA3 Fire-Resistance-Rated Wood-Frame Wall and Floor/Ceiling Assemblies, February 2024, Figure 1B.
4. BCI joists shall be protected from moisture exposure before and during installation.

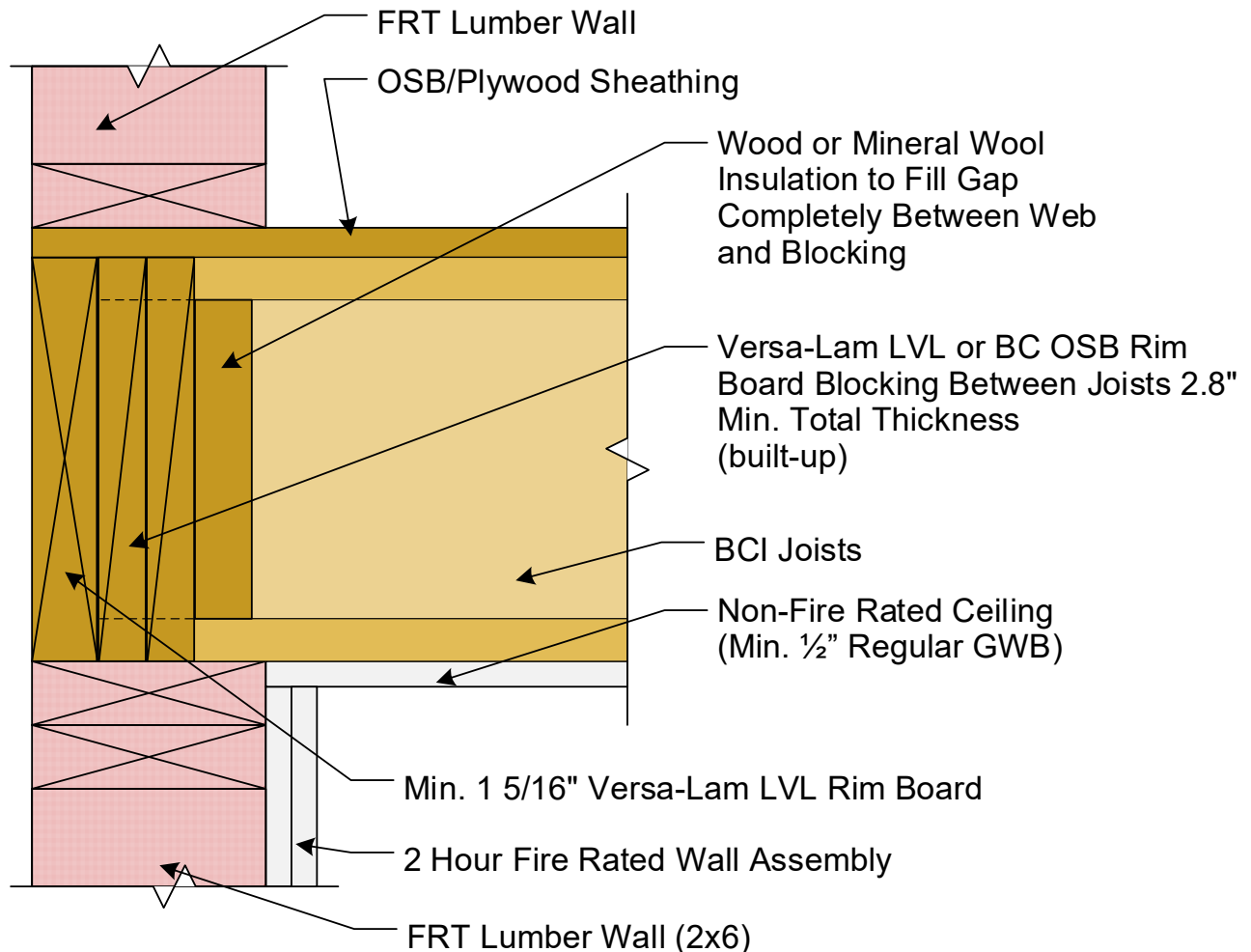
**Detail #3: Versa-Lam® LVL Rim & Blocking / 1 Hour Fire Rated Ceiling**



**Notes:**

1. Fire resistance for exposure from interior side: Two layer ceiling plus additional 2.0" sacrificial rim thickness provides at least 120 minutes protection per 2015/2018/2024 NDS Chapter 16. Remaining portion of Versa-Lam LVL rim board supports the load from the wall above. Vertical uniform capacity: 16" max depth: 5700 lb/ft (VL 2.1E), 4250 lb/ft (VL 1.8E). 20" max depth: 4300 lb/ft (VL 2.1E), 3700 lb/ft (VL 1.8E).
2. Fire resistance for exposure from exterior side: Where required per IBC Section 705.5, a combination of exterior fire protection and FRTW sheathing (not shown), and a portion of the rim board thickness is used to provide 120 minutes of protection. Blocking supports the load from the wall above.
3. Detail complies with 2024 IBC sections 705.6 and 705.7.1, and AWC DCA3 Fire-Resistance-Rated Wood-Frame Wall and Floor/Ceiling Assemblies, February 2024, Figure 1A.
4. BCI joists shall be protected from moisture exposure before and during installation.

**Detail #4: Versa-Lam® LVL Rim & Blocking / Non Fire-Rated Ceiling**



**Notes:**

1. Fire resistance for exposure from interior side: Two layer ceiling plus additional 2.0" sacrificial rim thickness provides at least 120 minutes protection per 2015/2018/2024 NDS Chapter 16. Remaining portion of Versa-Lam LVL rim board supports the load from the wall above. Vertical uniform capacity: 16" max depth: 5700 lb/ft (VL 2.1E), 4250 lb/ft (VL 1.8E). 20" max depth: 4300 lb/ft (VL 2.1E), 3700 lb/ft (VL 1.8E).
2. Fire resistance for exposure from exterior side: Where required per IBC Section 705.5, a combination of exterior fire protection and FRTW sheathing (not shown), and a portion of the rim board thickness is used to provide 120 minutes of protection. Blocking supports the load from the wall above.
3. Detail complies with 2024 IBC sections 705.6 and 705.7.1, and AWC DCA3 Fire-Resistance-Rated Wood-Frame Wall and Floor/Ceiling Assemblies, February 2024, Figure 2.
4. BCI joists shall be protected from moisture exposure before and during installation.