

Technical Note

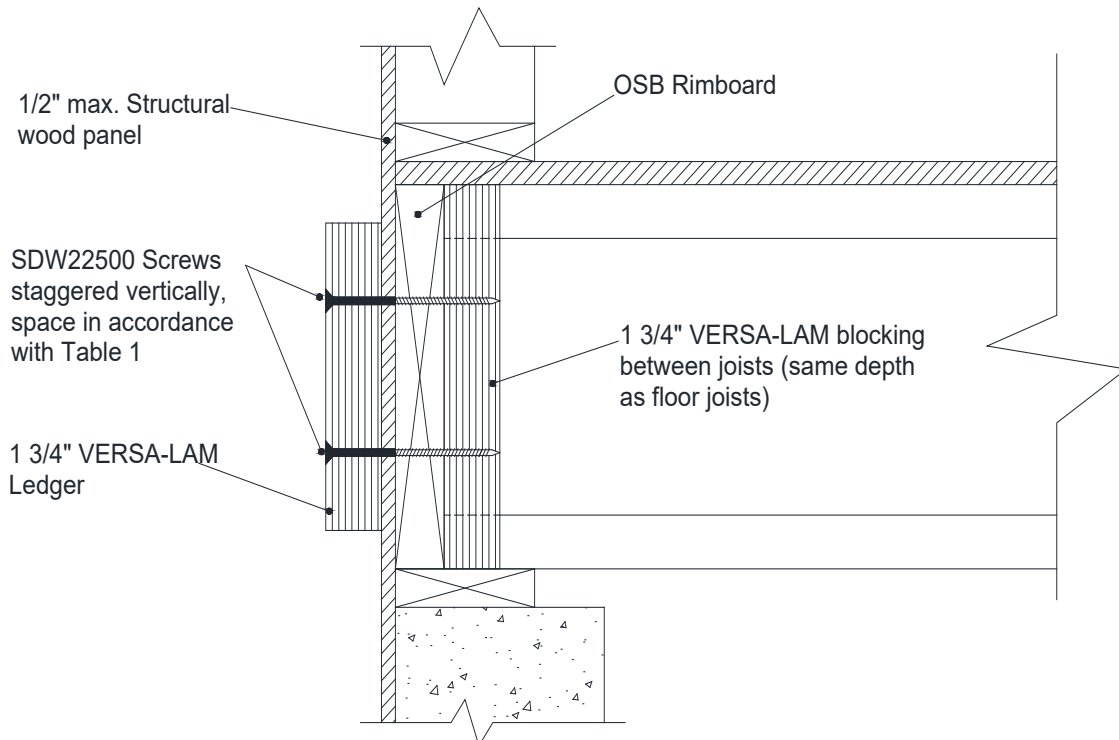
Versa-Lam[®] Ledger Fastening (SDWS Screws)

Table 1: 1 3/4" Versa-Lam[®] Ledger-to-Rim Board Assembly (SDW 22500 Screws)

Ledger Depth (in)	# of Rows of Fasteners	Maximum joist span based on indicated joist spacing			
		12" o.c.	16" o.c.	19.2" o.c.	24" o.c.
7 1/4" to 9 1/2"	2 rows of SDW22500 Screws at 16" o.c.	14'-10"	11'-1"	9'-3"	7'-5"
11 7/8" to 14"	3 rows of SDW22500 Screws at 16" o.c.	22'-3"	16'-8"	13'-11"	11'-1"
16" to 24"	4 rows of SDW22500 Screws at 16" o.c.	29'-8"	22'-3"	18'-7"	14'-10"

Notes:

- Tabulated joists spans are based on the specified Live Load of 40 psf, 15 psf Dead Load, and for dry service conditions. Service conditions are considered to be dry when the average equilibrium content is 15% or less over a year and does not exceed 19% at any time.
- Decks shall be designed for either the uniform distributed live load, or the snow load, whichever produces the most critical effect in the members concerned (as per NBCC 4.1.5.5). The above table is only applicable for live/snow loads ≤ 40 psf.
- Continuous ledger board flashing is required at exterior walls (not shown for clarity)
- Tabulated joists spans are for the ledger fastening requirements only. The structural adequacy of the floor joists should be verified by the building designer.
- For fasteners spaced at 12", the joist spans tabulated values should be multiplied by 1.33.
- For fasteners spaced at 19.2", the joist spans tabulated values should be multiplied by 0.625.
- For fasteners spaced at 24", the joist spans tabulated values should be multiplied by 0.5.
- The Simpson SDW22500 fastener spacing requirements are as follows:
 - Minimum end distance = 6"
 - Minimum distance between rows of fasteners = 3"
 - Minimum edge distance = 2"



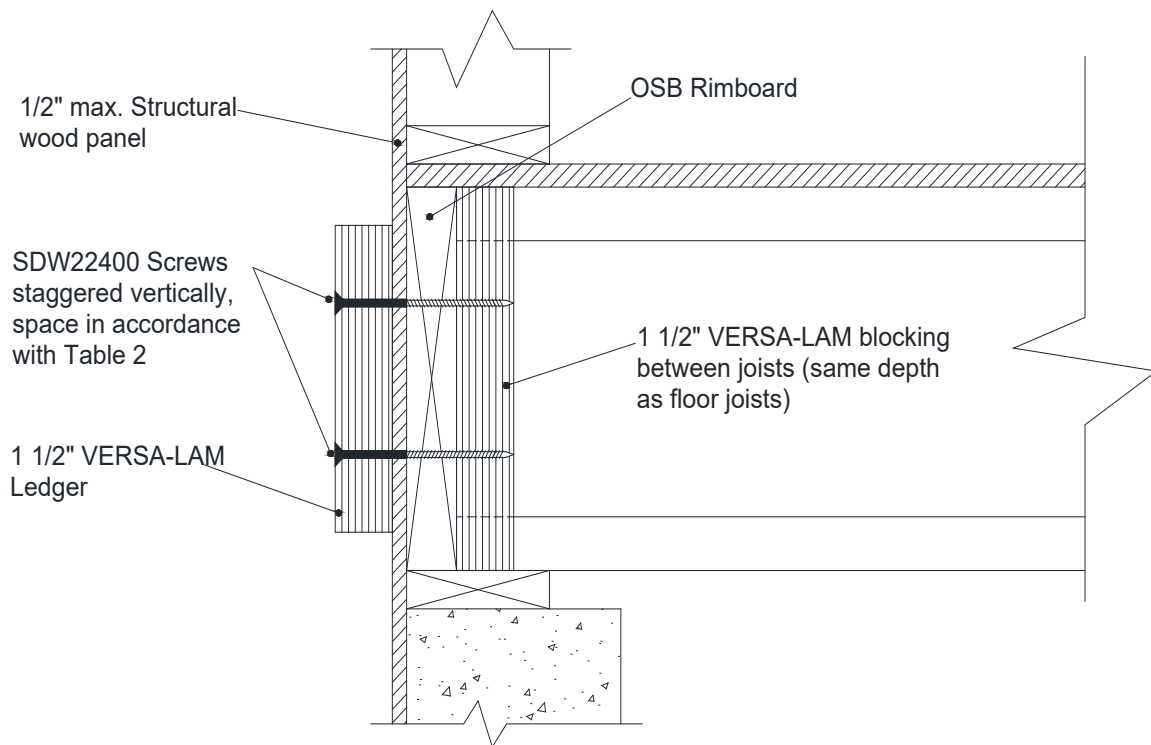
Technical Note

Table 2: 1 1/2" VERSA-LAM® Ledger-to-Rim Board Assembly (SDW 22400 Screws)

Ledger Depth (in)	# of Rows of Fasteners	Maximum joist span based on indicated joist spacing			
		12" o.c.	16" o.c.	19.2" o.c.	24" o.c.
7 1/4" to 9 1/2"	2 rows of SDW22400 Screws at 16" o.c.	14'-3"	10'-8"	8'-11"	7'-1"
11 7/8" to 14"	3 rows of SDW22400 Screws at 16" o.c.	21'-5"	16'-1"	13'-5"	10'-8"
16" to 24"	4 rows of SDW22400 Screws at 16" o.c.	28'-7"	21'-5"	17'-10"	14'-3"

Notes:

- Tabulated joists spans are based on the specified Live Load of 40 psf, 15 psf Dead Load, and for dry service conditions. Service conditions are considered to be dry when the average equilibrium content is 15% or less over a year and does not exceed 19% at any time.
- Decks shall be designed for either the uniform distributed live load, or the snow load, whichever produces the most critical effect in the members concerned (as per NBCC 4.1.5.5). The above table is only applicable for live/snow loads ≤ 40 psf.
- Continuous ledger board flashing is required at exterior walls (not shown for clarity)
- Tabulated joists spans are for the ledger fastening requirements only. The structural adequacy of the floor joists should be verified by the building designer.
- For fasteners spaced at 12", the joist spans tabulated values should be multiplied by 1.33.
- For fasteners spaced at 19.2", the joist spans tabulated values should be multiplied by 0.625.
- For fasteners spaced at 24", the joist spans tabulated values should be multiplied by 0.5.
- The Simpson SDWS22400 fastener spacing requirements are as follows:
 - Minimum end distance = 6"
 - Minimum distance between rows of fasteners = 3"
 - Minimum edge distance = 2"



Technical Note

Table 3: 1 3/4" VERSA-LAM[®] Ledger to Balloon-framed Wood Wall Studs Assembly (SDW 22500 Screws)

Ledger Depth (in)	# of Rows of Fasteners	Maximum joist span based on indicated joist spacing			
		12" o.c.	16" o.c.	19.2" o.c.	24" o.c.
7 1/4" to 9 1/2"	2 rows of SDW22500; Studs spaced at 16" o.c.	13'-9"	10'-4"	8'-7"	6'-10"
11 7/8" to 14"	3 rows of SDW22500 ; Studs spaced at 16" o.c.	20'-8"	15'-6"	12'-11"	10'-4"
16" to 24"	4 rows of SDW22500; Studs spaced at 16" o.c.	27'-6"	20'-8"	17'-2"	13'-9"

Notes:

- Tabulated joists spans are based on the specified Live Load of 40 psf, 15 psf Dead Load, and for dry service conditions. Service conditions are considered to be dry when the average equilibrium content is 15% of less over a year and does not exceed 19% at any time.
- Decks shall be designed for either the uniform distributed live load, or the snow load, whichever produces the most critical effect in the members concerned (as per NBCC 4.1.5.5). The above table is only applicable for live/snow loads ≤ 40 psf.
- Continuous ledger board flashing is required at exterior walls (not shown for clarity)
- Tabulated joists spans are for the ledger fastening requirements only. The structural adequacy or the floor joists should be verified by the building designer.
- For Studs spaced at 12", the joist spans tabulated values should be multiplied by 1.33.
- For Studs spaced at 19.2", the joist spans tabulated values should be multiplied by 0.625.
- For Studs spaced at 24", the joist spans tabulated values should be multiplied by 0.5.
- The Simpson SDWS22500 fastener spacing requirements are as follows:
 - Minimum end distance = 6"
 - Minimum distance between rows of fasteners = 3"
 - Minimum edge distance = 3/4" (center at 2x_ Wall Stud)

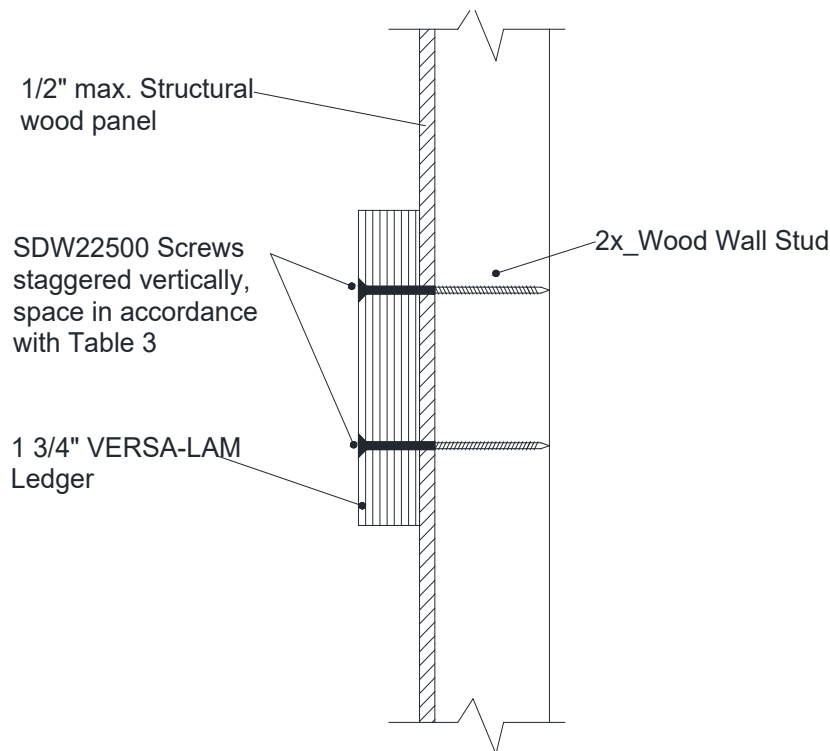


Table 4: 1 1/2" VERSA-LAM[®] Ledger to Balloon-framed Wood Wall Studs Assembly (SDW 22400 Screws)

Ledger Depth (in)	# of Rows of Fasteners	Maximum joist span based on indicated joist spacing			
		12" o.c.	16" o.c.	19.2" o.c.	24" o.c.
7 1/4" to 9 1/2"	2 rows of SDW22400; Studs spaced at 16" o.c.	13'-9"	10'-4"	8'-7"	6'-10"
11 7/8" to 14"	3 rows of SDW22400 ; Studs spaced at 16" o.c.	20'-8"	15'-6"	12'-11"	10'-4"
16" to 24"	4 rows of SDW22400; Studs spaced at 16" o.c.	27'-6"	20'-8"	17'-2"	13'-9"

Notes:

- Tabulated joists spans are based on the specified Live Load of 40 psf, 15 psf Dead Load, and for dry service conditions. Service conditions are considered to be dry when the average equilibrium content is 15% of less over a year and does not exceed 19% at any time.
- Decks shall be designed for either the uniform distributed live load, or the snow load, whichever produces the most critical effect in the members concerned (as per NBCC 4.1.5.5). The above table is only applicable for live/snow loads ≤ 40 psf.
- Continuous ledger board flashing is required at exterior walls (not shown for clarity)
- Tabulated joists spans are for the ledger fastening requirements only. The structural adequacy or the floor joists should be verified by the building designer.
- For Studs spaced at 12", the joist spans tabulated values should be multiplied by 1.33.
- For Studs spaced at 19.2", the joist spans tabulated values should be multiplied by 0.625.
- For Studs spaced at 24", the joist spans tabulated values should be multiplied by 0.5.
- The Simpson SDWS22400 fastener spacing requirements are as follows:
 - Minimum end distance = 6"
 - Minimum distance between rows of fasteners = 3"
 - Minimum edge distance = 3/4" (center at 2x_ Wall Stud)

