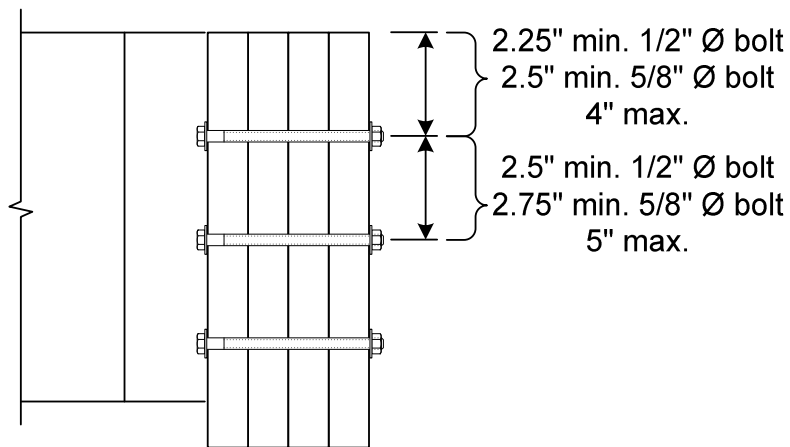
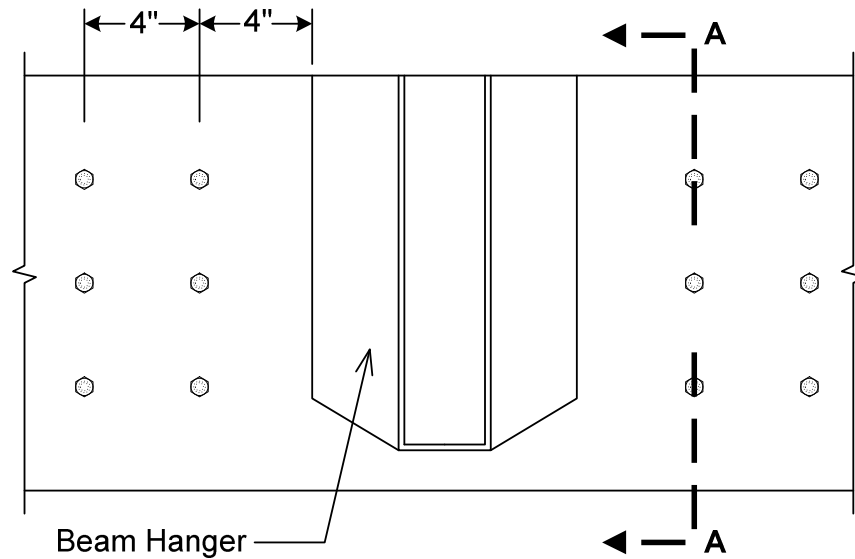




Connection of Side Point Loads to Quadruple 1 3/4" VERSA-LAM® Beams

Load (lbs)	Bolt Diameter (in)	Required Fastener Schedule (total number of bolts)	Minimum Beam Depth (in)
2000	1/2"	2 rows - 3 bolts (6 total bolts)	9 1/2"
2600	1/2"	4 rows - 2 bolts (8 total bolts)	9 1/2"
4000	1/2"	4 rows - 3 bolts (12 total bolts)	9 1/2"
4400	5/8"	4 rows - 3 bolts (12 total bolts)	11 7/8"



Section A-A

Note: Pre-drilled bolt holes shall be the same diameter as the bolt. A washer not less than a standard cut washer shall be between the beam and bolt head and between the beam and nut. Bolts shall be Grade A&B, Grades 1 or 2, or higher. Connection assumes VERSA-LAM member is properly braced laterally. Torsional stress shall be considered by the design professional of record.