

BCFramer®
EWP DESIGN & LAYOUT SOFTWARE

Powered by
AUTODESK
REALDWG
AUTODESK



Boise Cascade
Engineered Wood Products

Services: Logon To System

Build: 

Copyright © 2008 - 2010, Boise Cascade Company or its affiliates.
All Rights Reserved. BCFRAMER, BOISE CASCADE and TREE-IN-A-CIRCLE
designs are trademarks of Boise Cascade Company or its affiliates.
This Program is protected by all U.S. and International laws as described
in About.



Quick Material List

Presenter:
Terry Thompson
Software Trainer Central Region

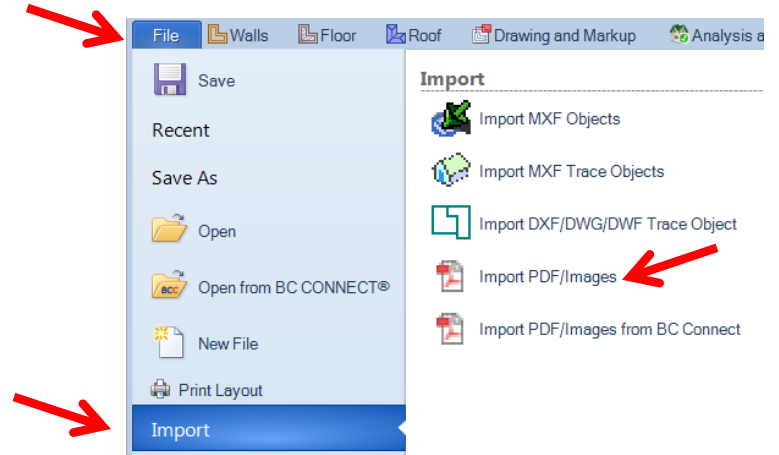
Open BC Framer



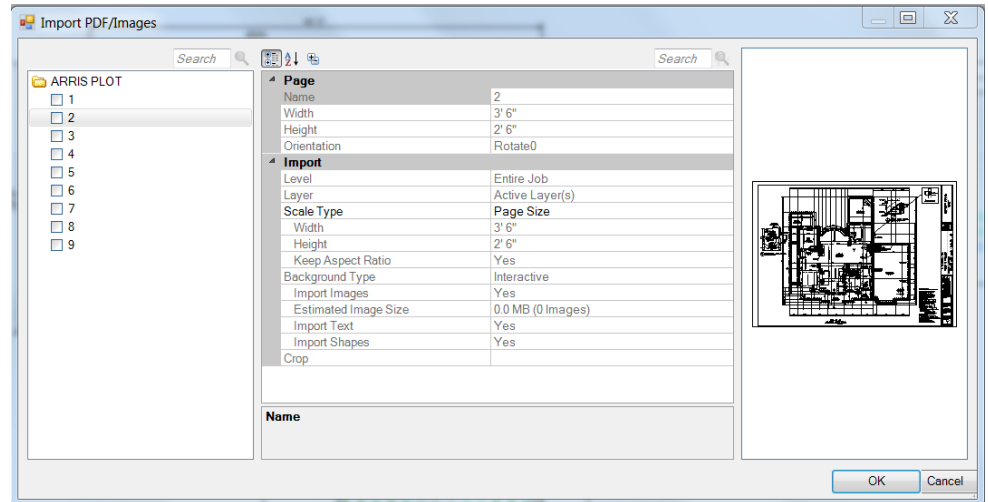
Pick your template, click OK and your new job should open in Framer.
Import the PDF of your project that you wish to work on.

Click Import

Click Import PDF/Images

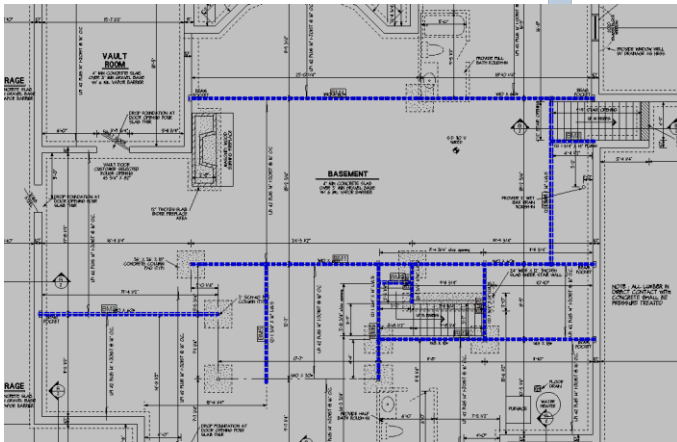
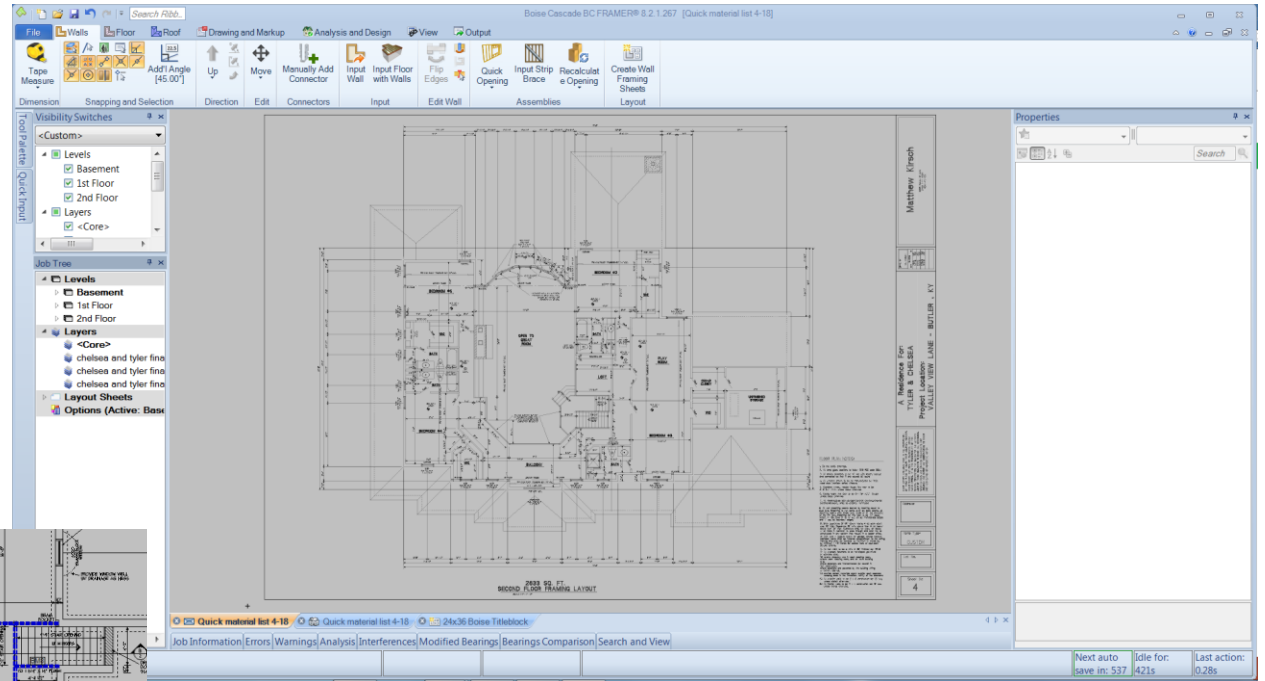


Click on the sheet number to the left that you wish to import. Then assign it to a level. Create a new layer and pick your scale size. Do these steps for each page you wish to import. Make sure you have a check mark by each page you wish to import. Once you have all your pages selected you can click on OK.



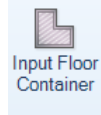
There is no need to draw any walls, because the PDF we are using is active. It can be snapped to, so we will use the PDF to add beams/headers and floor container.

First I put in any beams and/or headers I want listed on my material list. Start with your lowest level first. You can make your beams dropped or flush. Then you will get your desired hangers.



Once you have all your beams/headers in on that level, you are ready to put in the floor container.

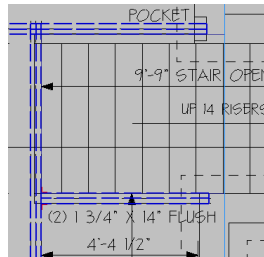
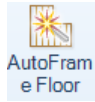
Adding the floor container is the same process. Click on the walls in the PDF instead of wall you would have drawn.



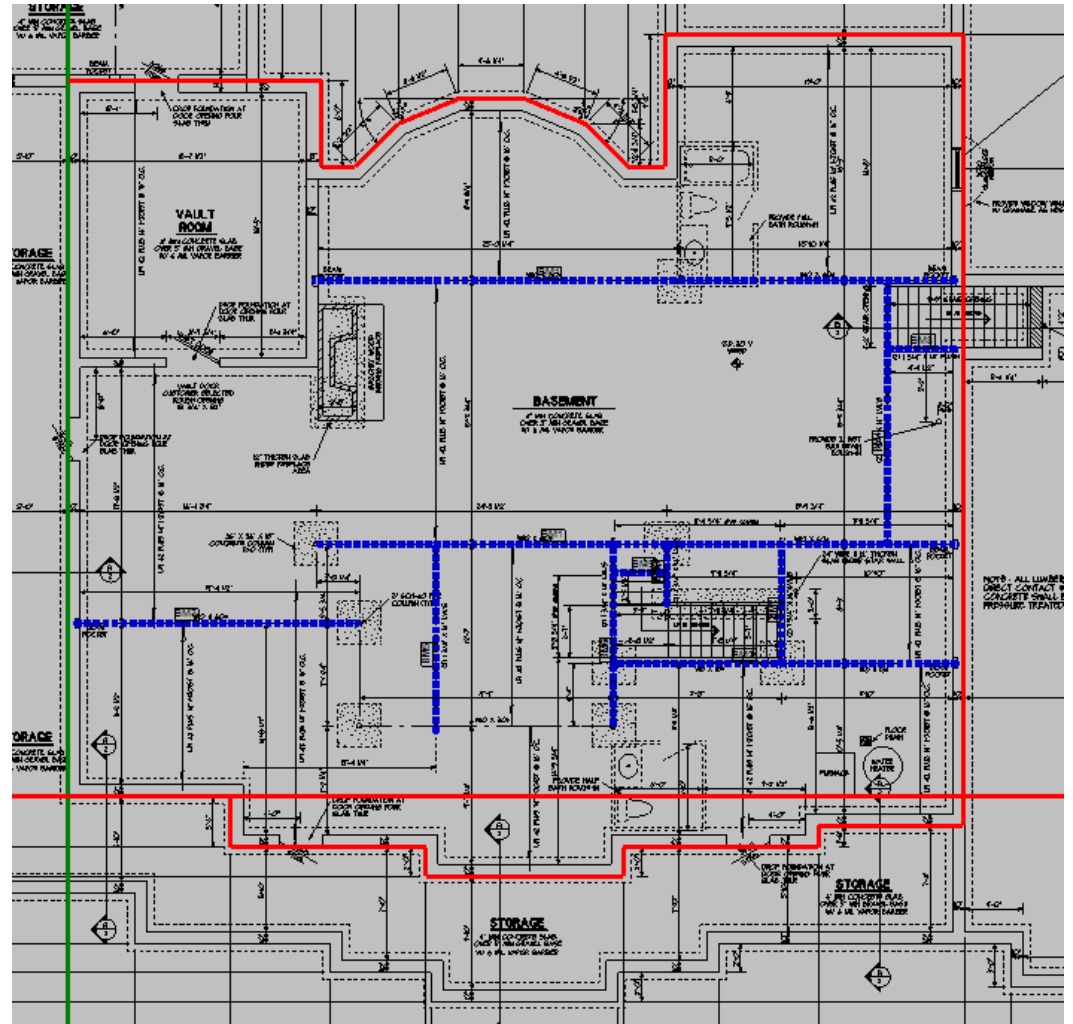
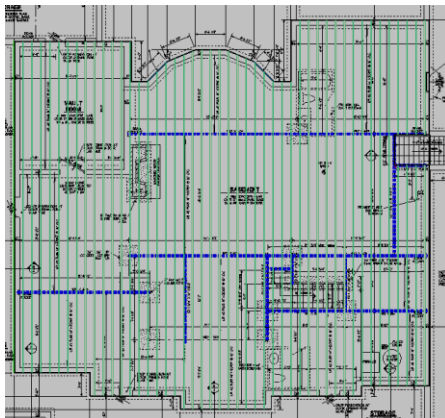
Now put in your stair opening, or any other opening in the floor container.



Once your openings are in you are ready to Auto Frame.



You will not get to pick direction of the joists. So it is important to pick your first floor container line, that will be the direction and start point for your joists.



You can edit the length and direction of the joists. Using our editing tools.

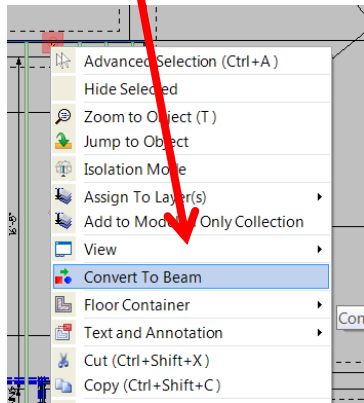
Cut Member



Quick edit



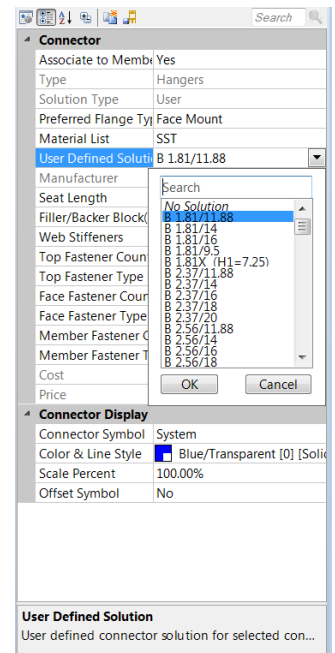
You can convert a joist to a beam, or a beam to a joist. Highlight the joist/beam; right mouse click. Then pick convert to...



You can add hangers by using our Manually Add Connector. Click the icon



In the properties box, make sure that your Associate to Member is Yes. Then pick your hanger and draw your line on the members you wish to place hangers on.



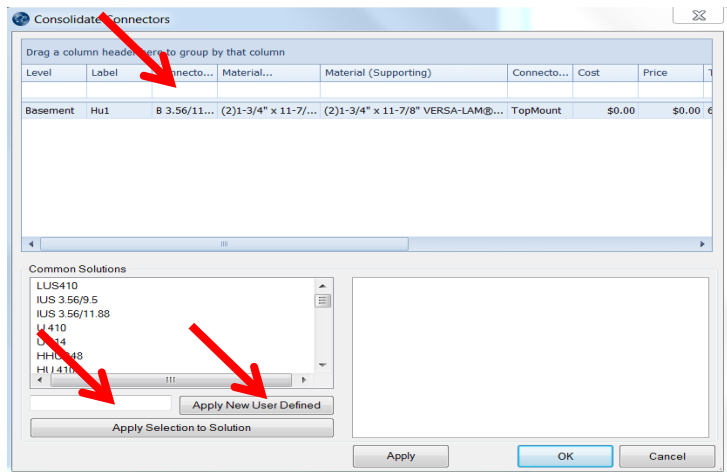
For hangers that were auto placed on your members during the auto frame process, go to Analysis and Design tab and click on the Geometry Only Connectors icon.



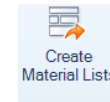
This will specify hangers using the member size. You are able to edit the hangers by clicking on the Consolidate Connectors icon.



From this properties box you can pick a different hanger or specify your own. Just type your hanger ID in the space just left of Apply New User Defined. Once you are finished typing your ID click on Apply New User Defined and it will change the hanger that you highlighted in the above list.



Now that all your editing is complete you can place your material list on your plan. Go to the Drawing and Markup tab and click on the Create Material Lists icon.

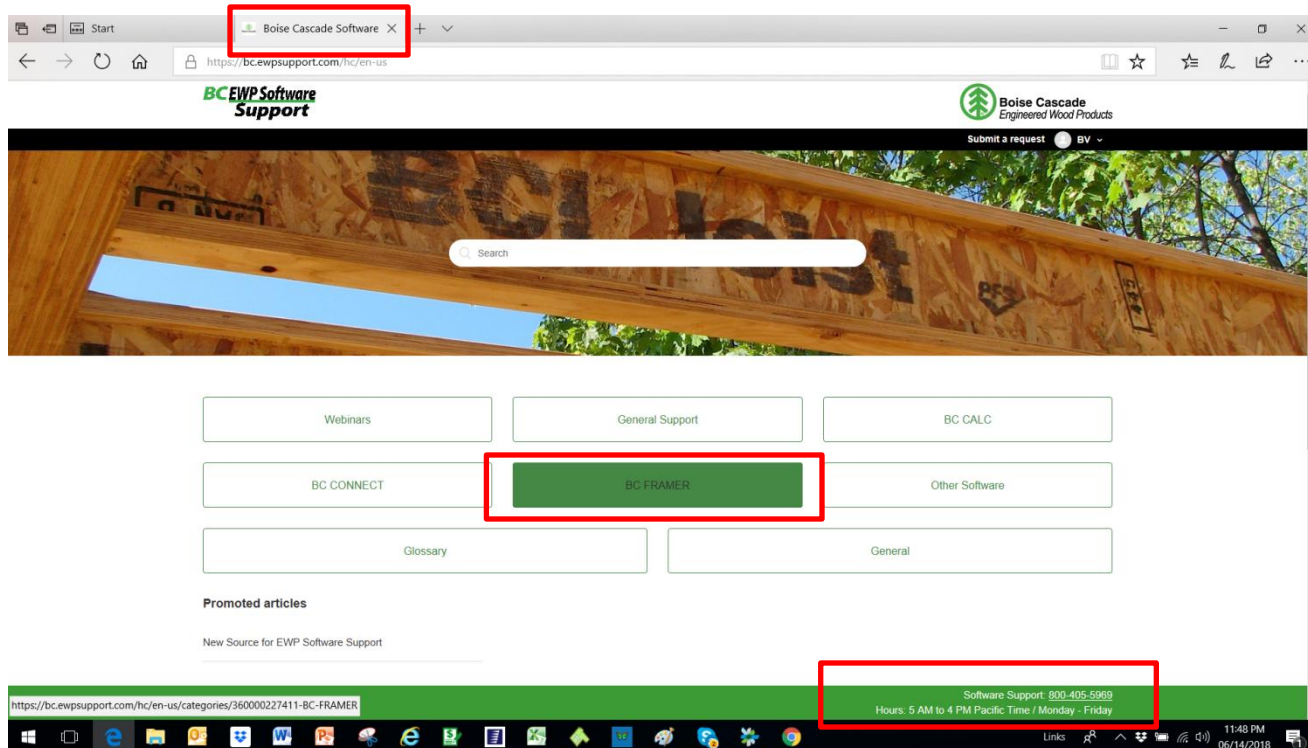


Or you can place your material list on your layout sheets. Just click on your layout sheet. Go to the Drawing and Markup tab and click on the Create Material lists icon

Products					
PlotID	Net Qty	Product	Length	Plies	
FJ1	7	11-7/8" BCI@ 4500s-1.8	58' 0"	1	
FJ2	4	11-7/8" BCI@ 4500s-1.8	56' 0"	1	
FJ3	13	11-7/8" BCI@ 4500s-1.8	54' 0"	1	
FJ4	3	11-7/8" BCI@ 4500s-1.8	52' 0"	1	
FJ5	10	11-7/8" BCI@ 4500s-1.8	50' 0"	1	
FJ6	5	11-7/8" BCI@ 4500s-1.8	48' 0"	1	
FJ7	4	11-7/8" BCI@ 4500s-1.8	34' 0"	1	
FJ8	4	11-7/8" BCI@ 4500s-1.8	18' 0"	1	
BM1	4	1-3/4" x 11-7/8" VERSA-LAM@ 2.0 3100 SP	45' 0"	2	
BM2	2	1-3/4" x 11-7/8" VERSA-LAM@ 2.0 3100 SP	24' 0"	2	
BM3	2	1-3/4" x 11-7/8" VERSA-LAM@ 2.0 3100 SP	20' 0"	2	
BM4	2	1-3/4" x 11-7/8" VERSA-LAM@ 2.0 3100 SP	19' 0"	2	
BM5	2	1-3/4" x 11-7/8" VERSA-LAM@ 2.0 3100 SP	14' 0"	2	
BM6	2	1-3/4" x 11-7/8" VERSA-LAM@ 2.0 3100 SP	13' 0"	2	
BM7	2	1-3/4" x 11-7/8" VERSA-LAM@ 2.0 3100 SP	9' 0"	2	
BM8	4	1-3/4" x 11-7/8" VERSA-LAM@ 2.0 3100 SP	5' 0"	2	
BM9	2	1-3/4" x 11-7/8" VERSA-LAM@ 2.0 3100 SP	4' 0"	2	
Ca1	23	1-1/8" x 11-7/8" BC RIM BOARD OSB	12' 0"	1	

Connector Summary			
PlotID	Qty	Manuf	Product
Hu1	1	Simpson	B 3.56/11.88

QUESTIONS ?



The screenshot shows a web browser window with the URL <https://bc.ewpsupport.com/hc/en-us>. The page features a search bar and a grid of navigation buttons: Webinars, General Support, BC CALC, BC CONNECT, BC FRAMER (highlighted with a red box), Other Software, Glossary, and General. A footer bar contains the text: "Software Support: 800-405-5969" and "Hours: 5 AM to 4 PM Pacific Time / Monday - Friday" (also highlighted with a red box). The browser's address bar shows the full URL: <https://bc.ewpsupport.com/hc/en-us/categories/360000227411-BC-FRAMER>.

<https://bc.ewpsupport.com>