

PDF Import

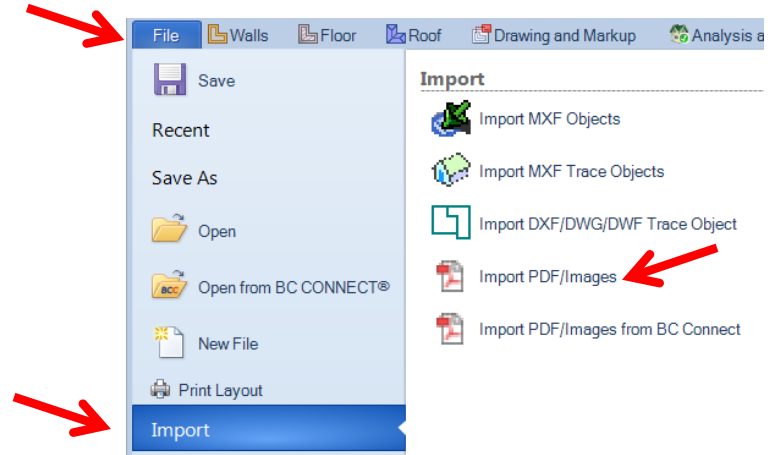
Open BC Framer

Click on  New File

Pick your template, click OK and your new job should open in Framer.

Click - File / Import / Import PDF/Images

Browse to the location of the project that you wish to work on.



Browse to the location of the project that you wish to work on.

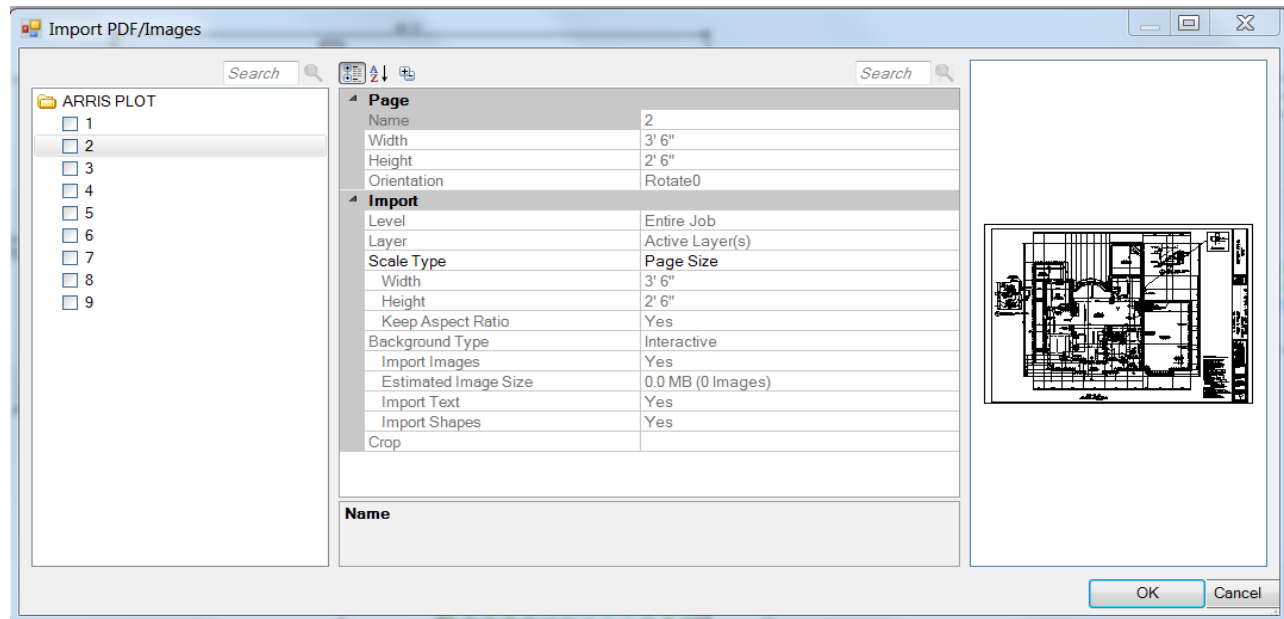
Click on the sheet number to the left that you wish to import. Assign it to a level, or leave as default to entire job.

Tip: click to the right of sheet selection will display preview and page properties.

Create a new layer – (this can also be done after import).

Pick your scale size.

Level, layer, scale and crop can all be managed at import or after.



Select PDF Image

Left click on any line (image goes gray)

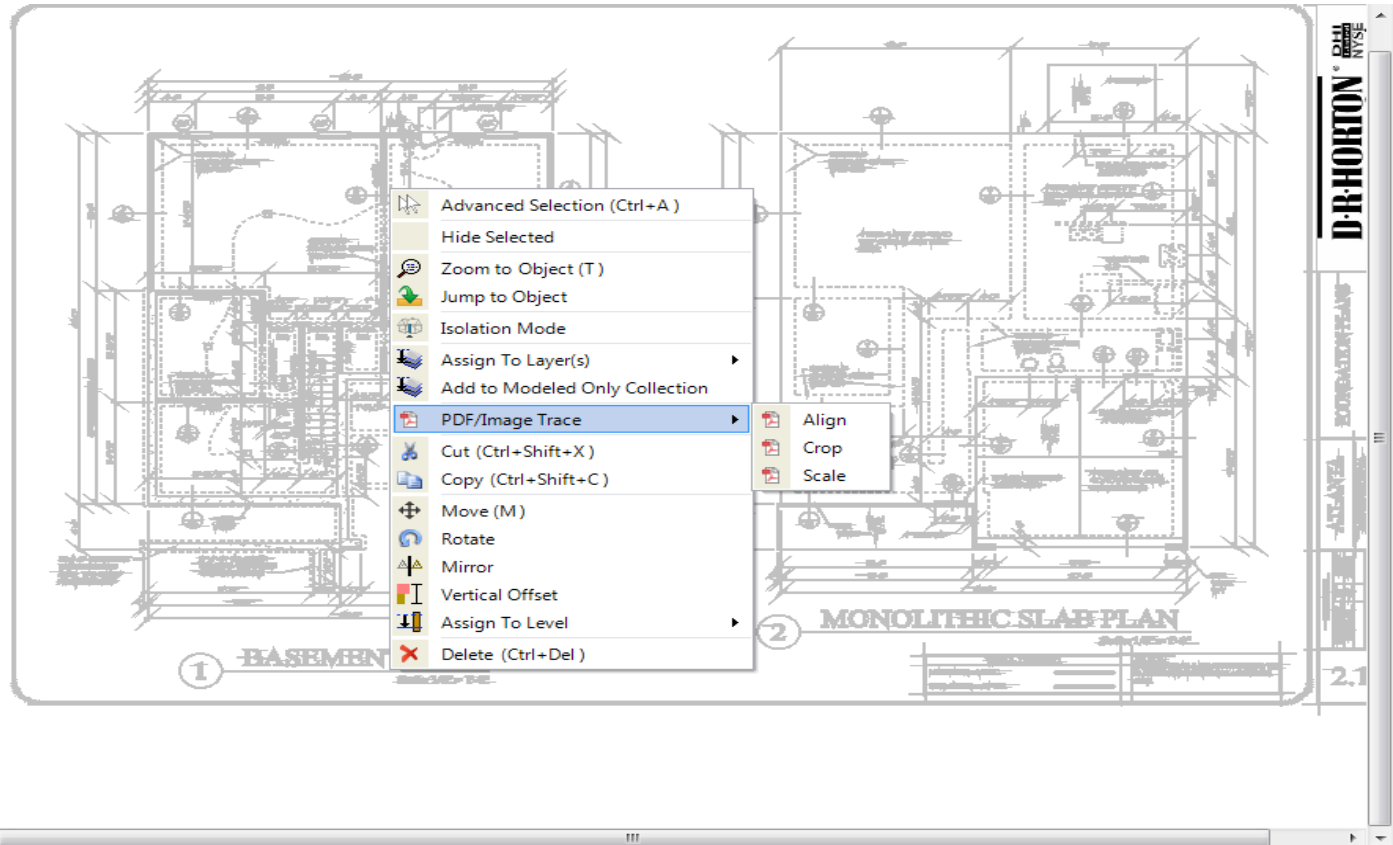
Right click for sub-menu

PDF / Image Trace

Align

Crop

Scale



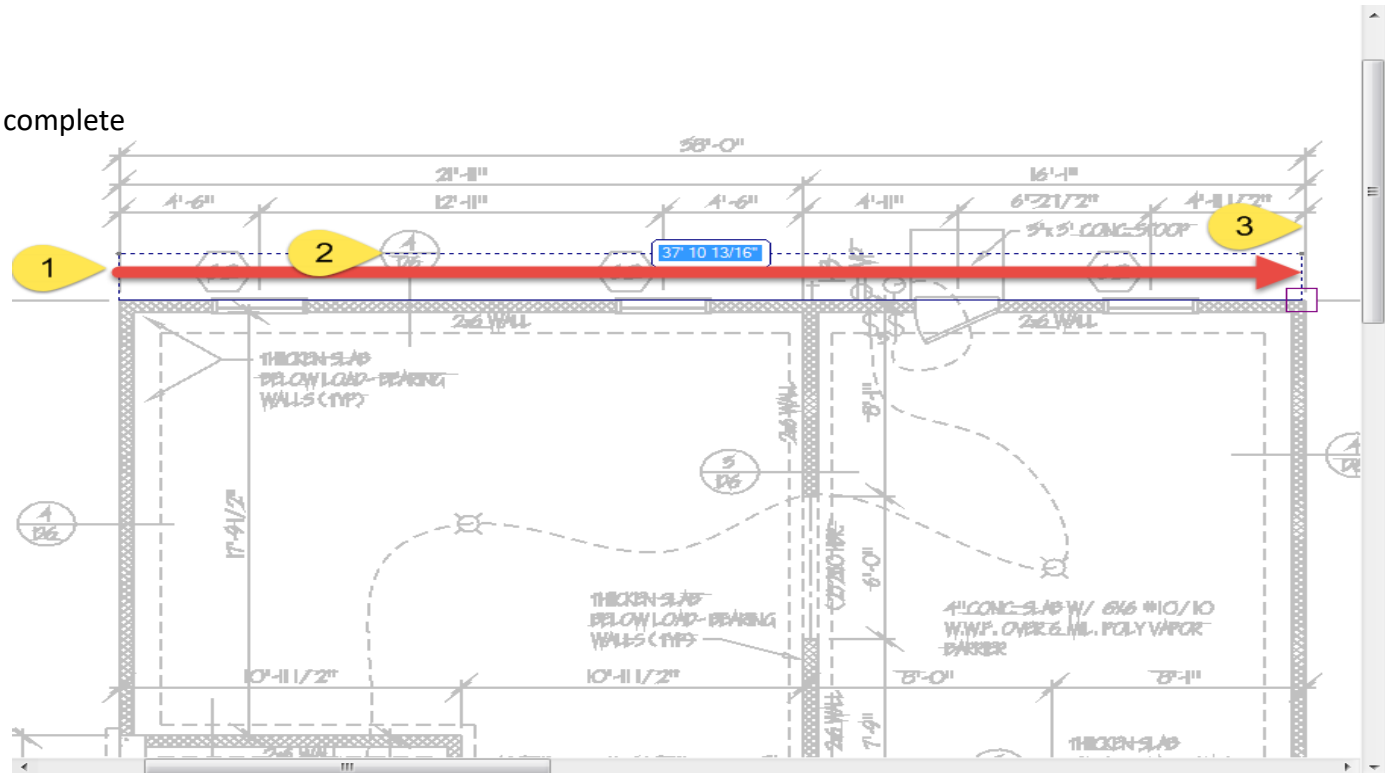
Align PDF

Turn ortho command off

1. Select PDF Image
2. Left click on any line (image goes gray)
3. Right click for sub-menu
PDF / Image Trace

Align

Select start and end of line to complete align adjust.



Crop = eliminate unwanted area of image

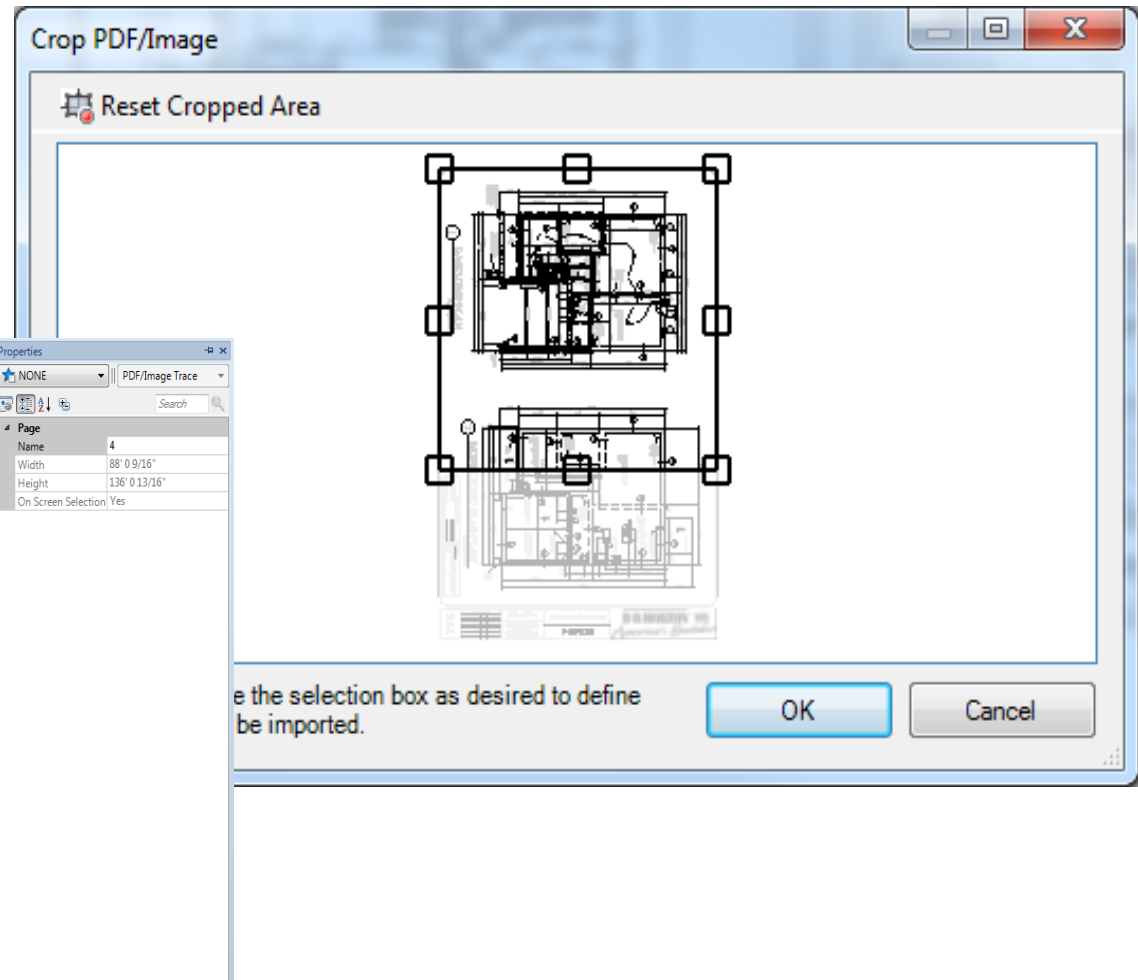
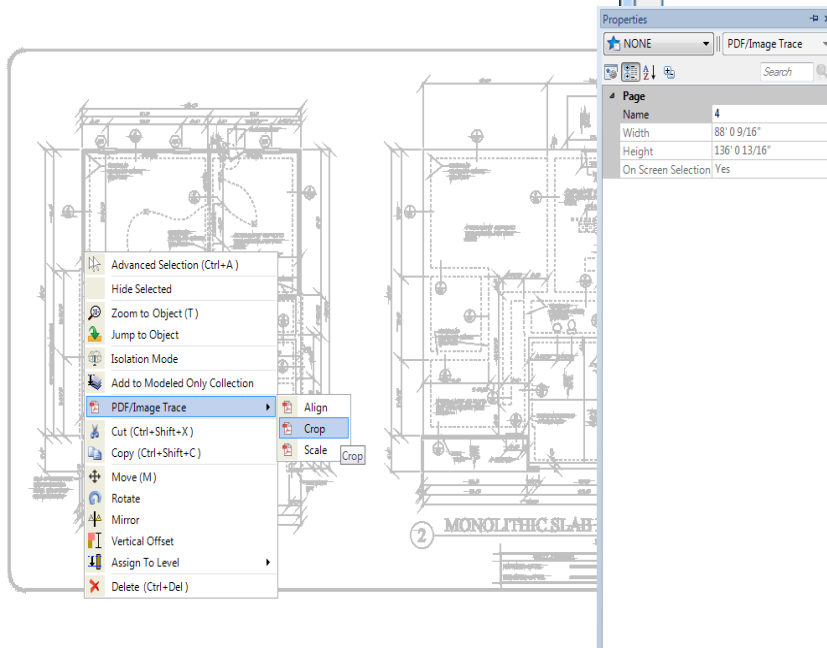
Select PDF Image

Left click on any line (image goes gray)

Right click for sub-menu

PDF / Image Trace

Crop



Scale the image:

Select PDF Image

Left click on any line (image goes gray)

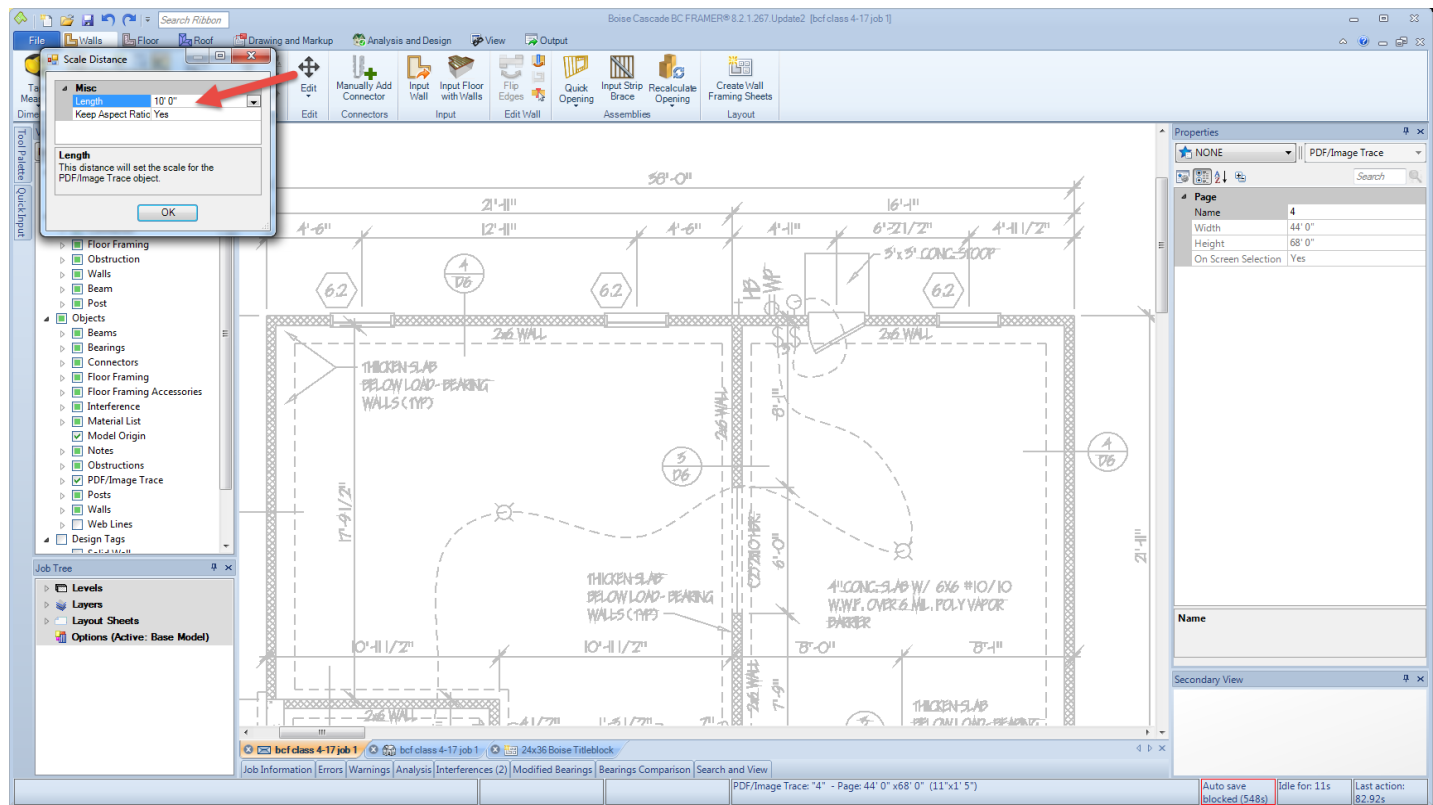
Right click for sub-menu

PDF / Image Trace

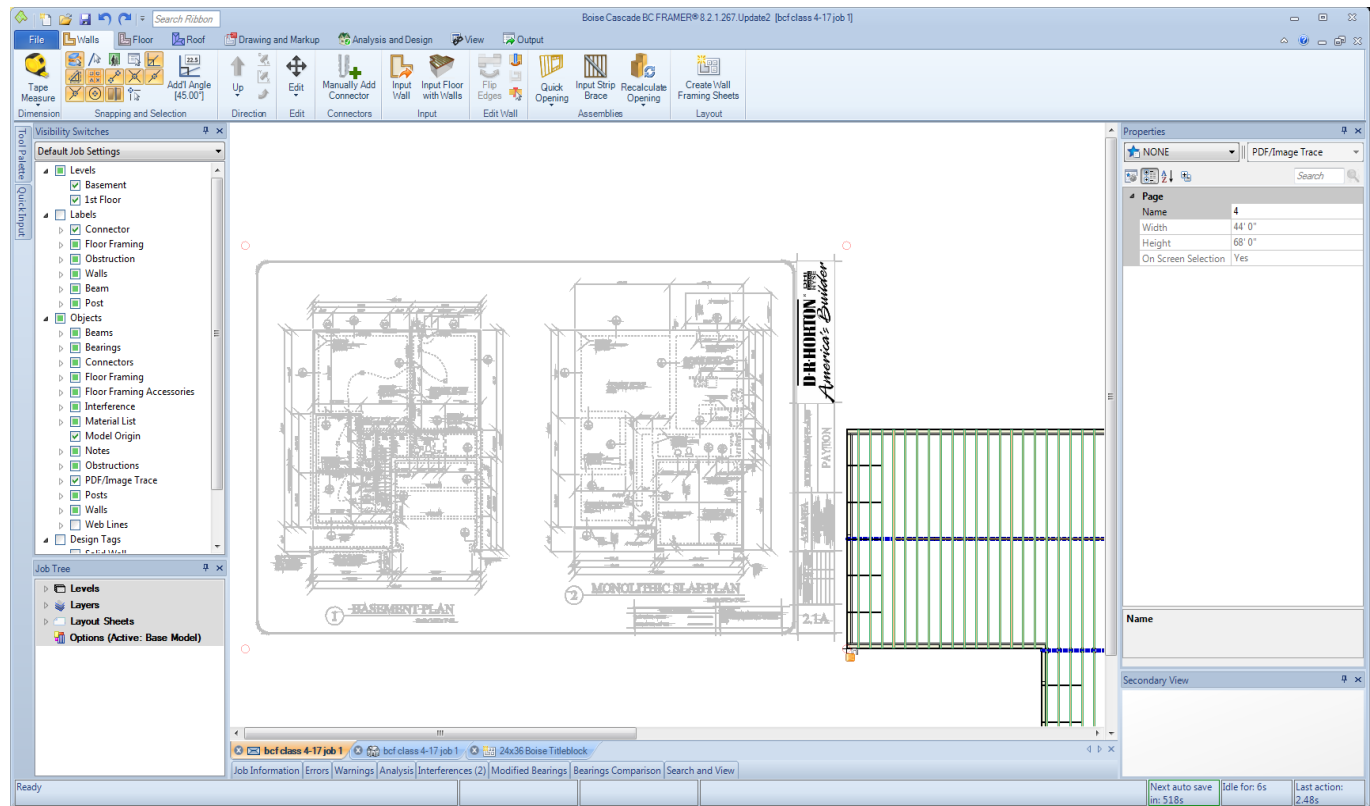
Scale

Double check with

Tape measure.

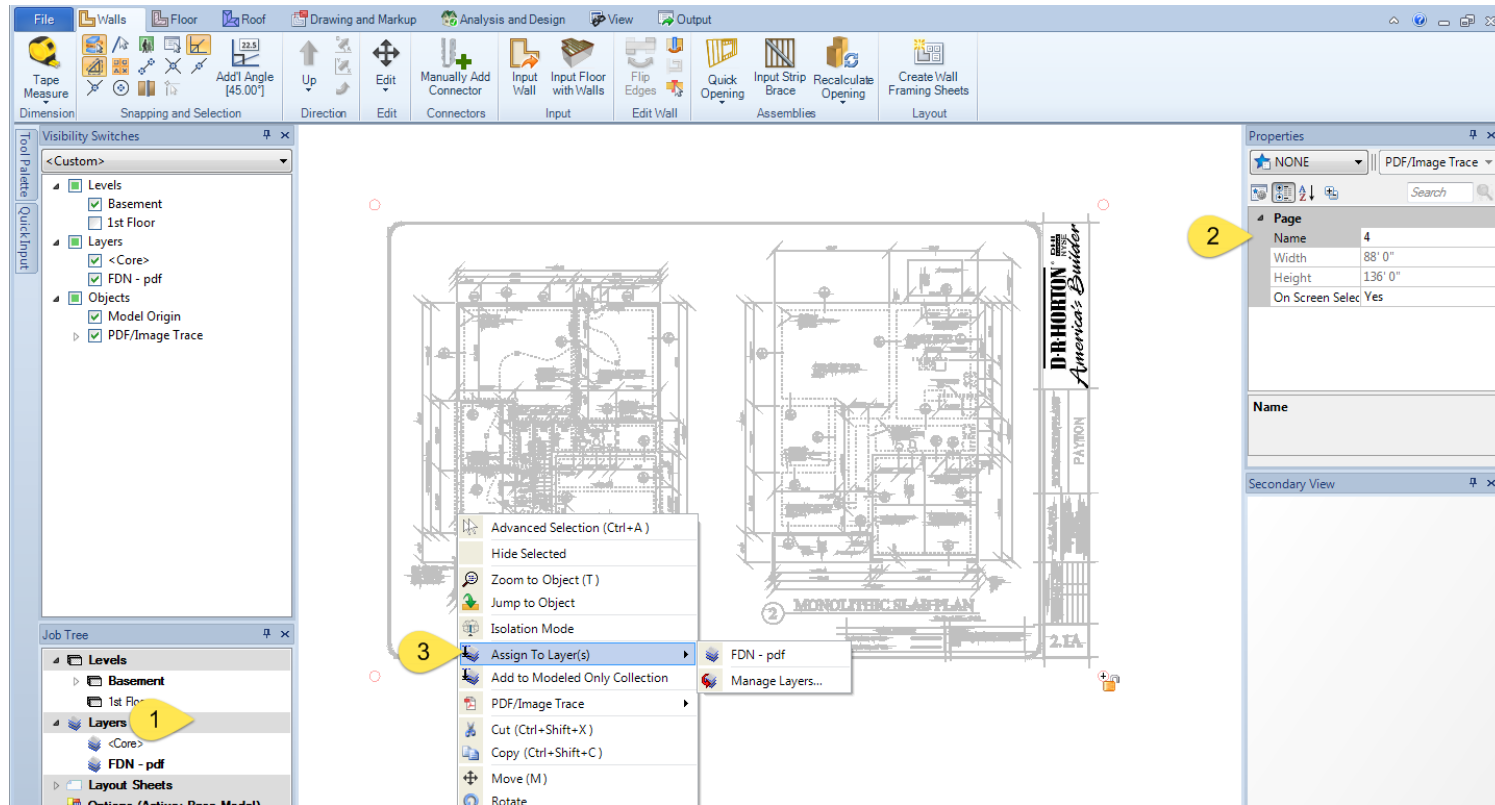


- Move to model origin:
- Use point common to all levels
- Turn off ortho
- Select the PDF image
- (M) Move command
- Pick corner
- Pick destination
- Padlock



Assign PDF to New Layer

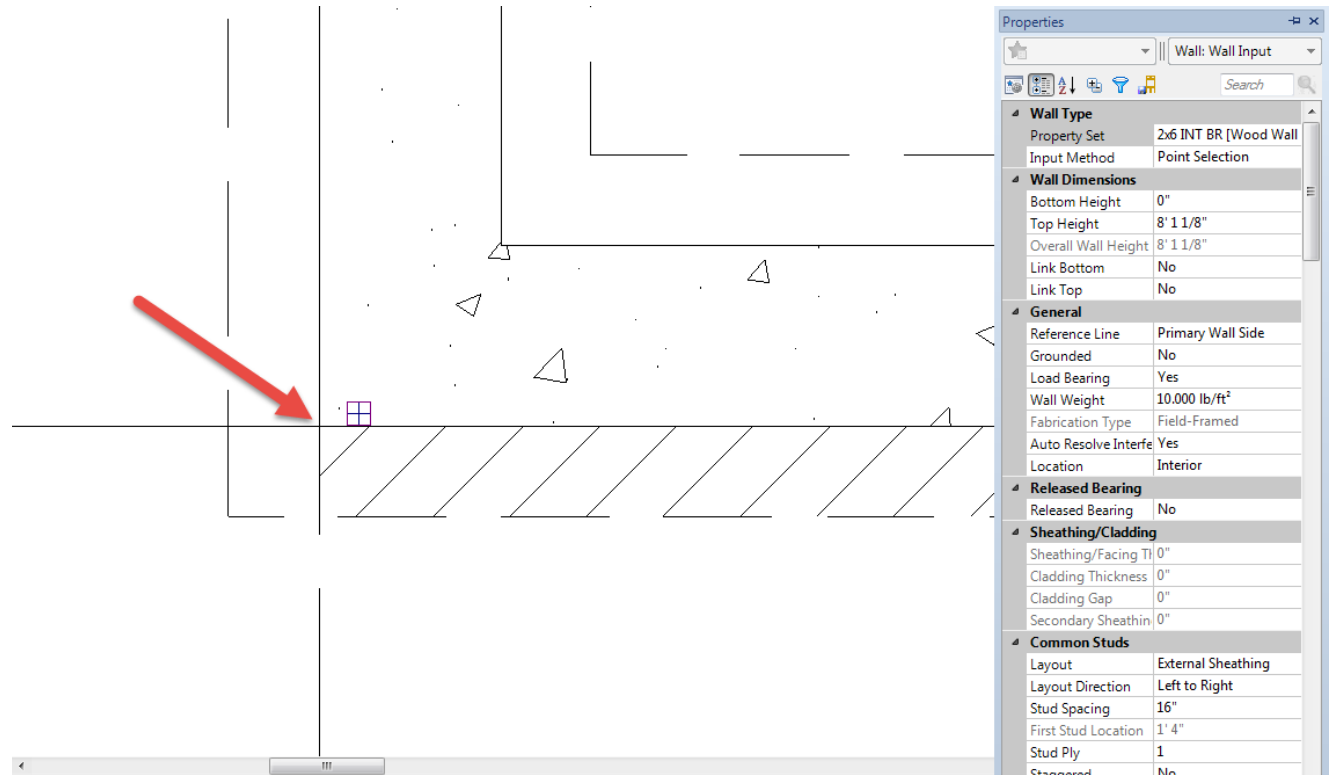
1. Create new layer
2. Re-name layer
3. Assign pdf to layer



PDF as Tracing element

Make sure ortho is turned back on

Zoom close enough to ensure snap accuracy.

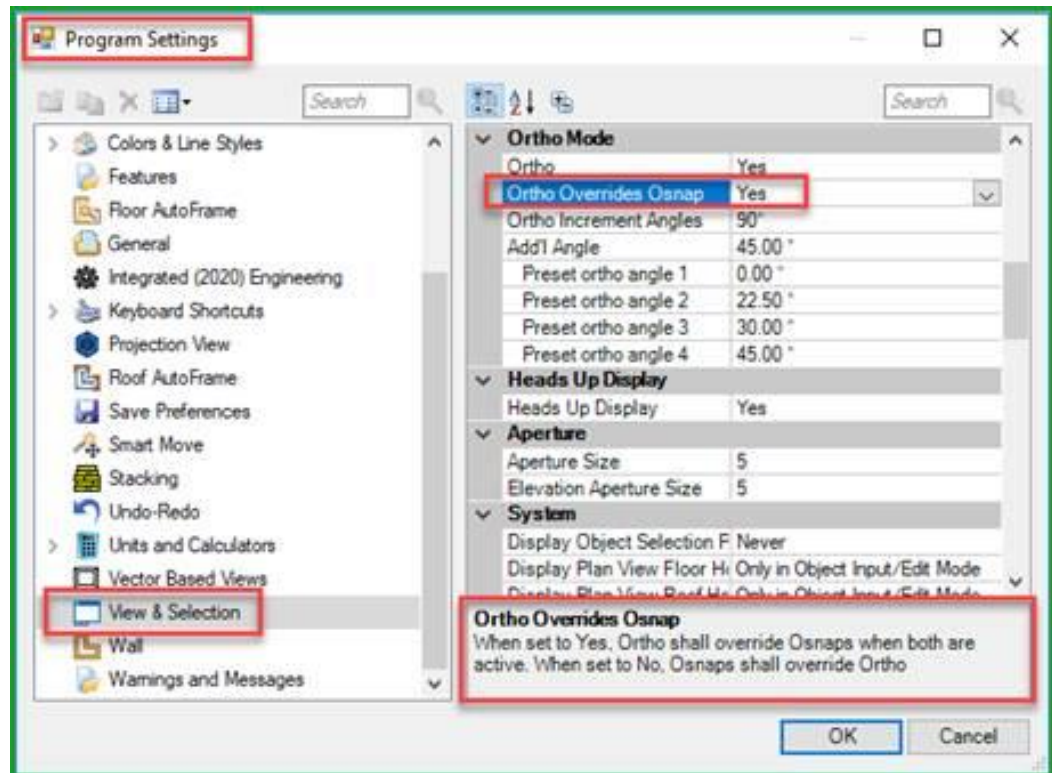


PDF as Tracing element

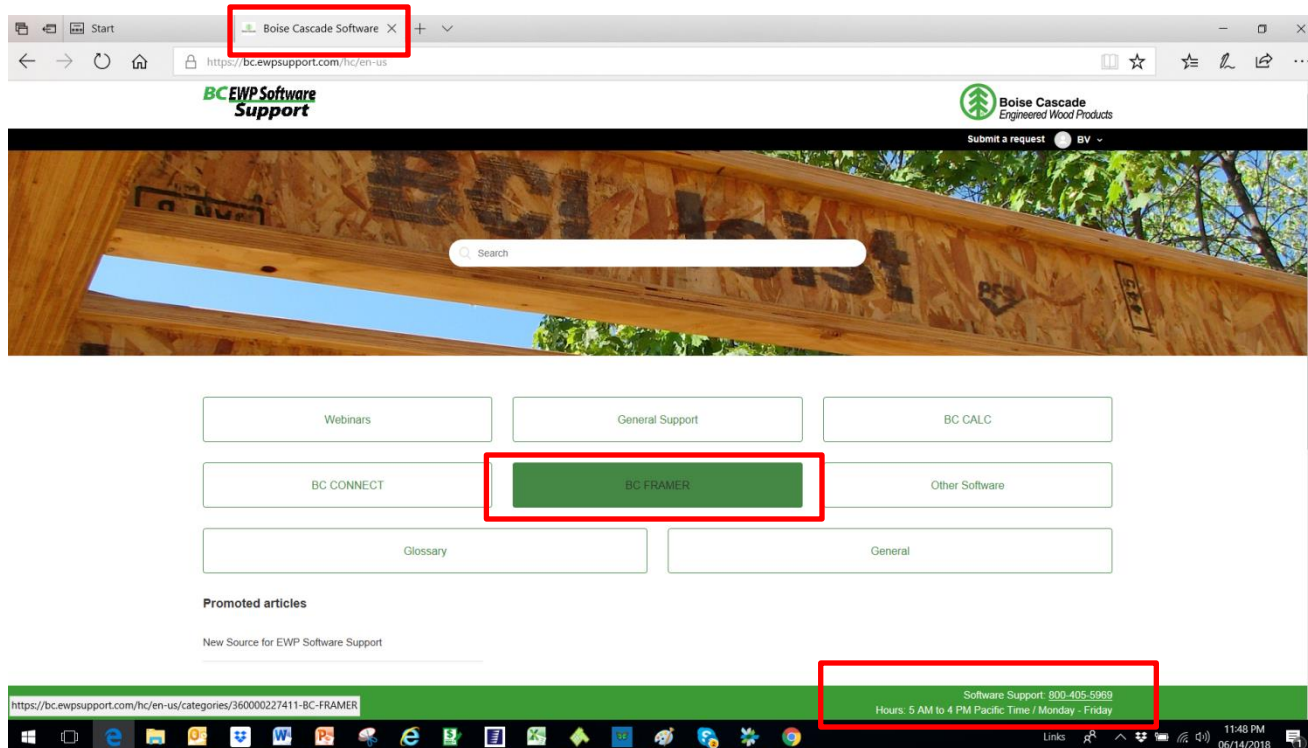
Assuring straight lines

In BC Framer version 8.1.3 and newer, the Ortho Overrides Osnap setting should be set to Yes.

This will help ensure you are snapping to a point on the intended axis.



QUESTIONS ?



<https://bc.ewpsupport.com>