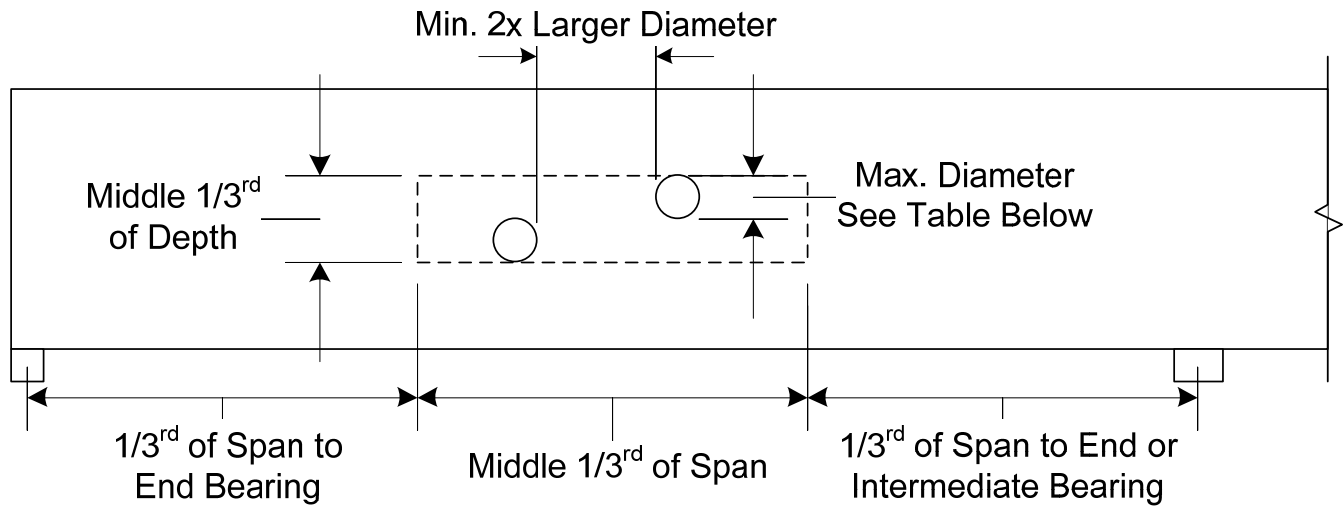




# Versa-Lam® LVL Beam Prescriptive Hole Chart



**Notes:**

- Square and rectangular holes are not permitted.
- Round holes may be drilled or cut with a hole saw anywhere within the area of the beam shown.
- The horizontal distance between adjacent holes shall be at least two times the diameter of the larger hole. This restriction also applies to the location of holes relative to bolt holes in multiple ply beams. Holes shall not be stacked vertically.
- Do not drill more than three holes in any four-foot-long section of beam.
- The maximum round hole diameter permitted in the corresponding beam depth is:

Beam Depth	Max. Hole Diameter
5 1/2" to less than 7 1/4"	3/4"
7 1/4" to less than 9 1/4"	1"
9 1/4" to less than 18"	2"
18" to less than 24"	3"
24"	4"

- These limitations apply to holes drilled for plumbing, wiring, and other mechanical access. The size and location of holes drilled for fasteners are governed by the provisions of the National Design Specification® for Wood Construction.
- Beams deflect under load. Size holes to provide clearance where required.
- This prescriptive hole chart is valid for beams supporting uniform load only. For beams supporting concentrated loads and/or beams with larger holes, use BC Calc® sizing software ([www.bccalc.com](http://www.bccalc.com)) or contact Boise Cascade EWP Engineering.
- Hole chart valid for all Versa-Lam® LVL grades.