



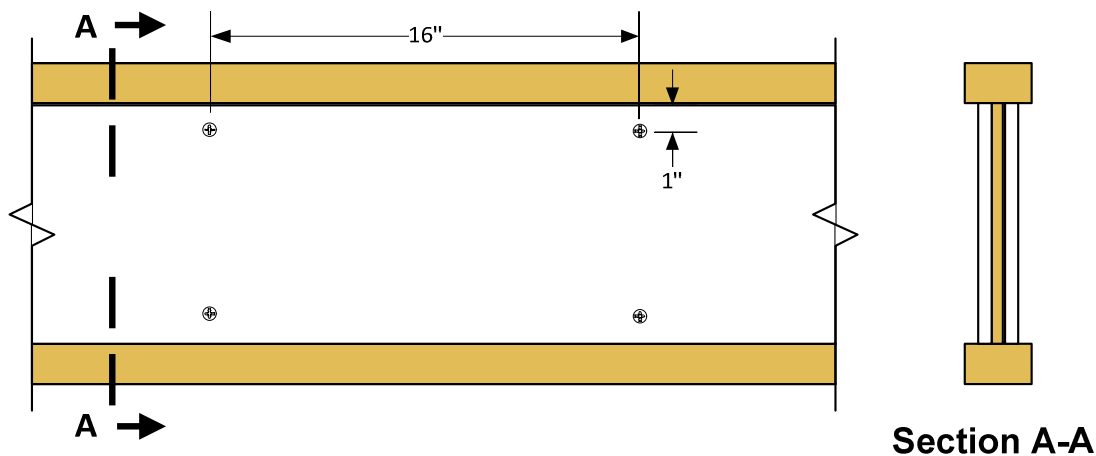
Web Armor™ Fire Protection for AJS®/BCI® Joists Installation Guide



Materials

- AJS (all series): ICC ES ESR-1144
- BCI 60 & 60s, 90 & 90s Joists: ICC ES ESR-1336
- 1/2" Regular or Lightweight Gypsum Board
- Screws (type W or S : min 1" length) or Nails (larger head drywall or roofing nails recommended)

Gypsum Installation Instructions



- Product shall be kept dry during storage and construction time periods
- Field installed vertical gypsum shall be installed snug between flanges (maximum tolerance between top of gypsum and bottom of top flange = 1/8")

Joist Depth [in]	Gypsum Depth [in]
9 1/2"	6 1/2"
11 7/8"	8 7/8"
14"	11"
16"	13"

- Two rows of fasteners spaced @ 16" oc, stacked or staggered, both sides of web, 1" from panel edges
- Tape and joint compound are not required at any joints

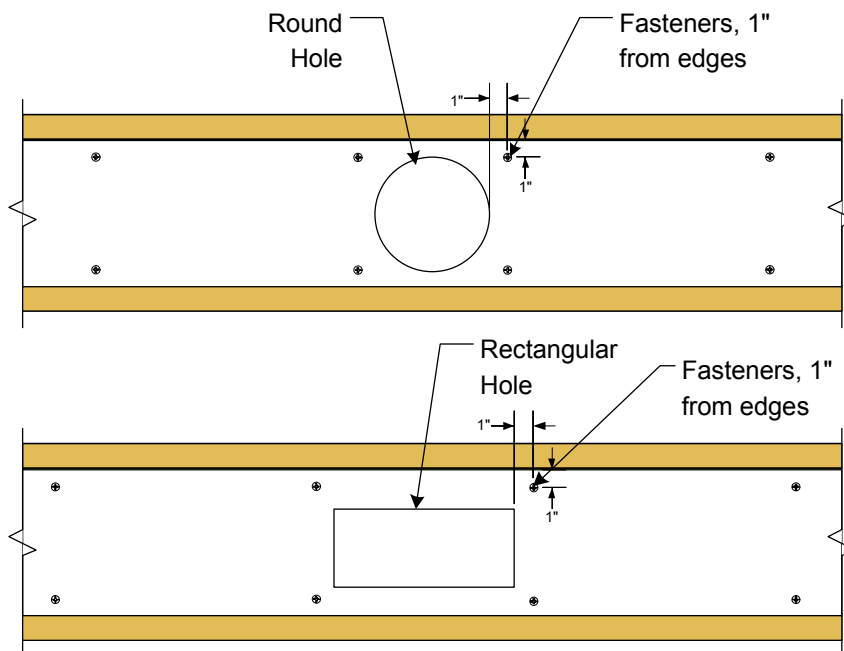


Web Holes

Installation

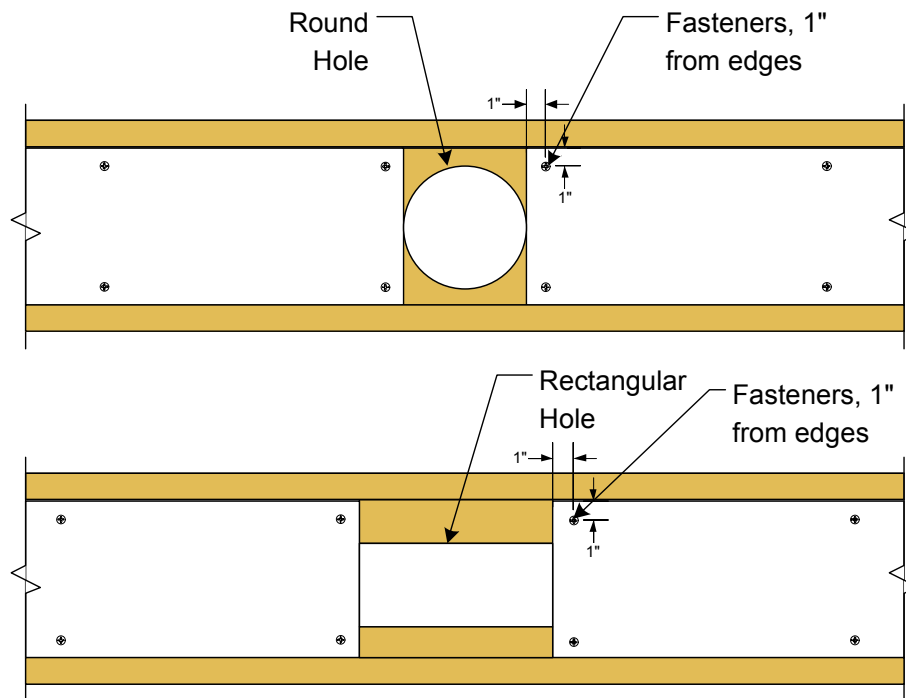
- Holes may be located as allowed per AJS/BCI literature or BC Calc software
- Holes may be cut before or after the gypsum is applied to the joist web
- The following is the recommended procedure for cutting holes if the vertical gypsum has been applied prior to mechanical installation:
 1. Using a hole saw, cut through first layer of gypsum and at least half the web
 2. Using the pilot hole as a guide, drill from opposite side through gypsum and remaining web

Installation Before Mechanical

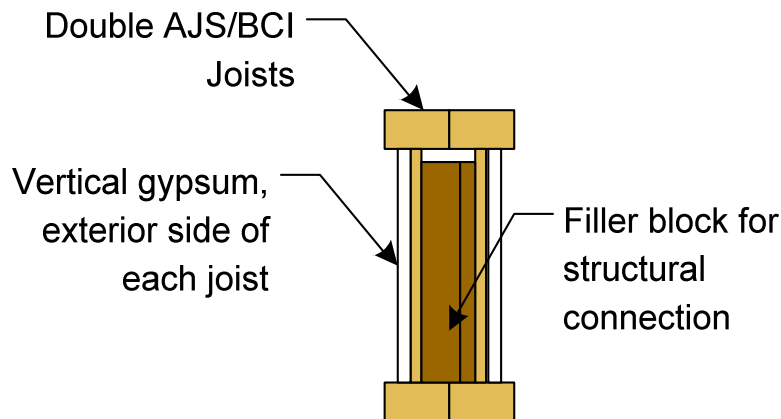




Installation after Mechanical



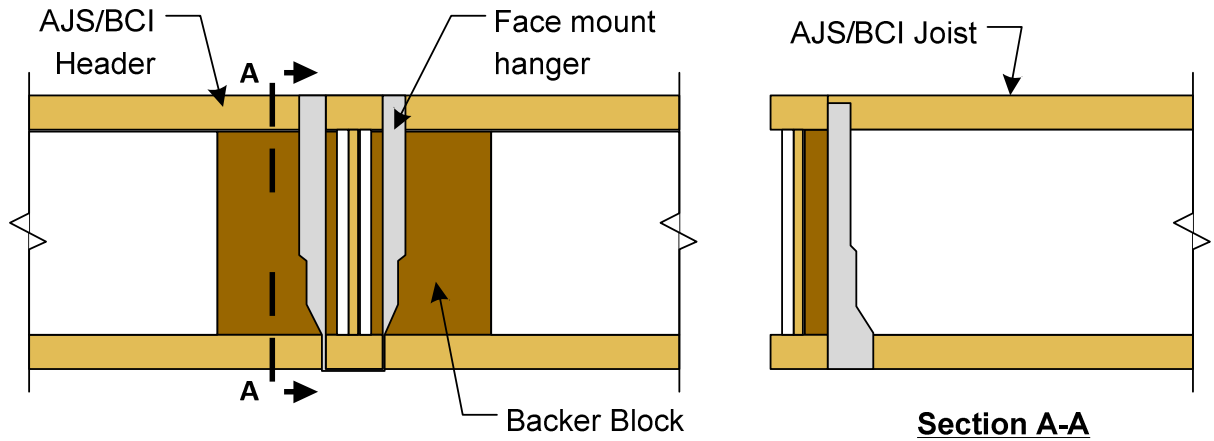
Double Joist Applications



- Gypsum required on exterior sides of each joist web
- Filler blocks required for specific loading conditions, see Tech Note IJ-13 for further information. Gypsum not required within internal cavity if joists are installed tight and filler block not required for structural connection.
- For double joists separated (e.g. straddling plumbing wall), each side of web of each joist requires gypsum. 1 1/2" screws may be installed from exterior side to fasten interior gypsum layer on each joist.



AJS/BCI Header Applications



Structural wood backer block per AJS/BCI joist series

Series	Backer Block
AJS 140, 150, 20, 190; BCI 60	1 1/8" or double 1/2"
AJS 25, 30; BCI 90	2x lumber or equivalent wood panel thickness of multiple plies

- Nail backer block with minimum (10) – 10d nails.
- Butt gypsum board tight to backer block at edges.
- For continuous backer block installations, backer block material listed on page 4 provides required fire resistance. Install backer blocks per information shown on page 1.

AJS/BCI Bridging – Blocking

If AJS/BCI bridging or blocking is installed perpendicular to the joist length within a framing area for lateral nailing or floor performance purposes, those short pieces of joist do not require gypsum board web protection.



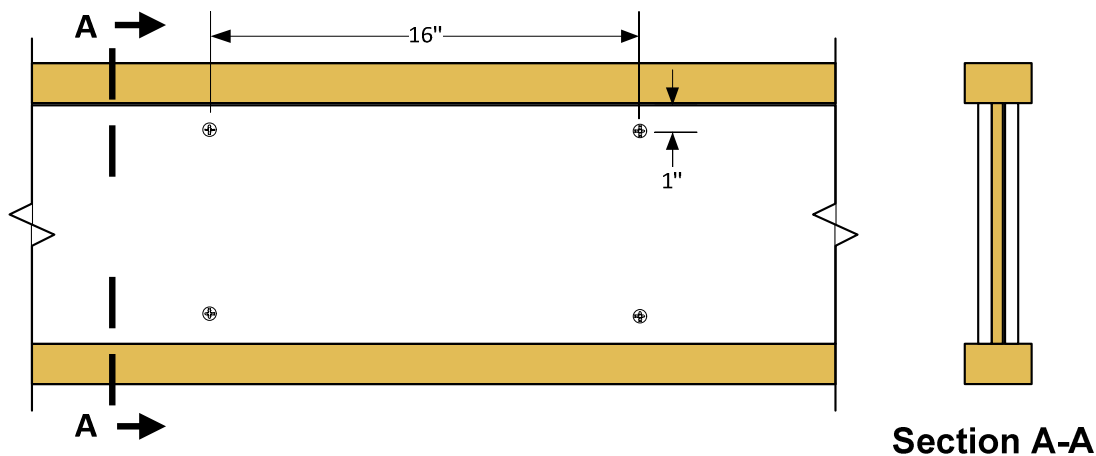
Web Armor™ Fire Protection for AJS®/BCI® Joists Installation Guide



Materials

- AJS (all series): ICC ES ESR-1144
- BCI 60 & 60s, 90 & 90s Joists: ICC ES ESR-1336
- 1/2" Regular or Lightweight Gypsum Board
- Screws (type W or S : min 1" length) or Nails (larger head drywall or roofing nails recommended)

Gypsum Installation Instructions



- Product shall be kept dry during storage and construction time periods
- Field installed vertical gypsum shall be installed snug between flanges (maximum tolerance between top of gypsum and bottom of top flange = 1/8")

Joist Depth [in]	Gypsum Depth [in]
9 1/2"	6 1/2"
11 7/8"	8 7/8"
14"	11"
16"	13"

- Two rows of fasteners spaced @ 16" oc, stacked or staggered, both sides of web, 1" from panel edges
- Tape and joint compound are not required at any joints

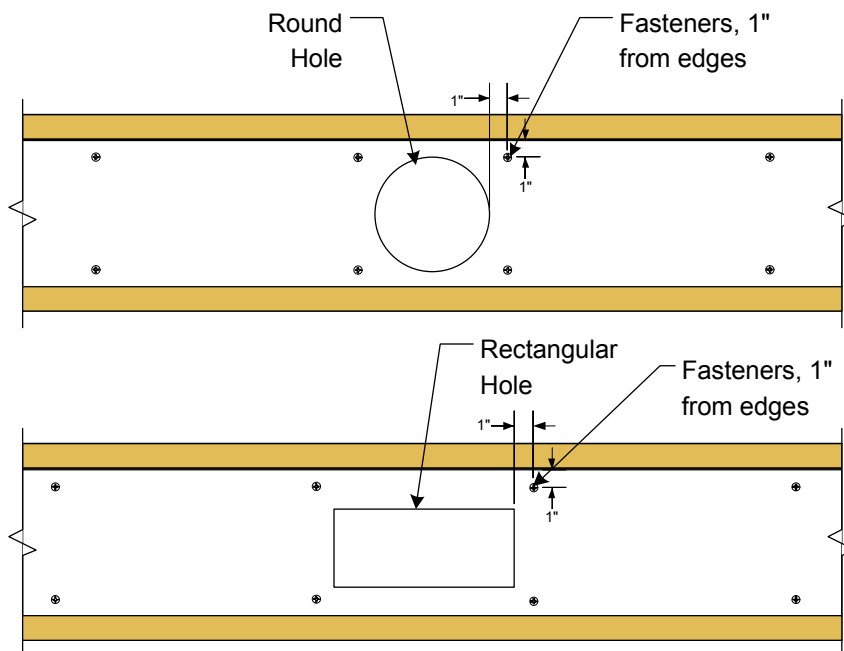


Web Holes

Installation

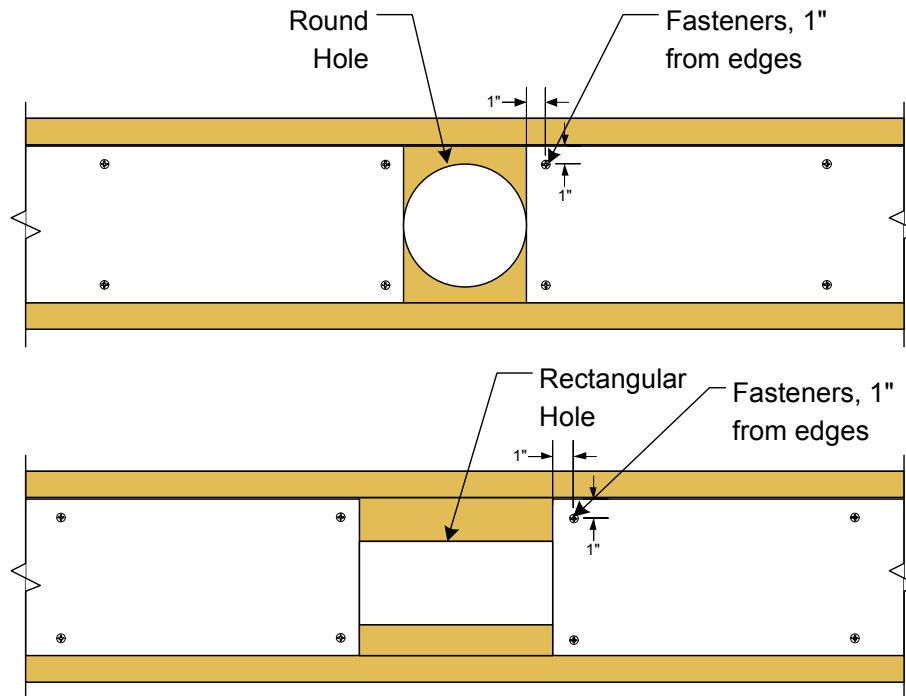
- Holes may be located as allowed per AJS/BCI literature or BC Calc software
- Holes may be cut before or after the gypsum is applied to the joist web
- The following is the recommended procedure for cutting holes if the vertical gypsum has been applied prior to mechanical installation:
 1. Using a hole saw, cut through first layer of gypsum and at least half the web
 2. Using the pilot hole as a guide, drill from opposite side through gypsum and remaining web

Installation Before Mechanical

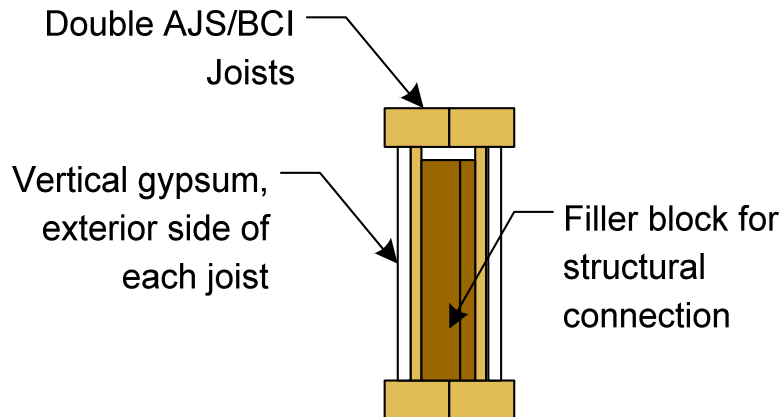




Installation after Mechanical



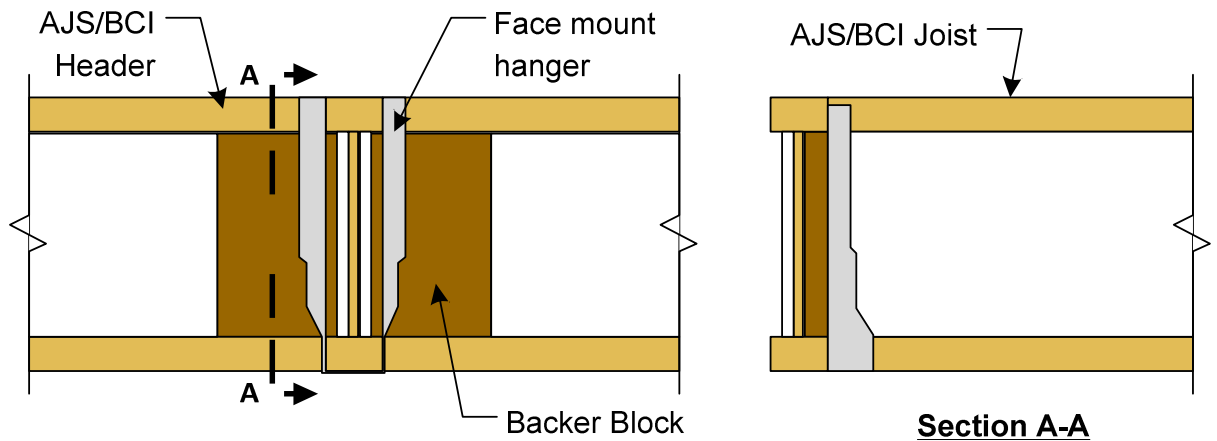
Double Joist Applications



- Gypsum required on exterior sides of each joist web
- Filler blocks required for specific loading conditions, see Tech Note IJ-13 for further information. Gypsum not required within internal cavity if joists are installed tight and filler block not required for structural connection.
- For double joists separated (e.g. straddling plumbing wall), each side of web of each joist requires gypsum. 1 1/2" screws may be installed from exterior side to fasten interior gypsum layer on each joist.



AJS/BCI Header Applications



Structural wood backer block per AJS/BCI joist series

Series	Backer Block
AJS 140, 150, 20, 190; BCI 60	1 1/8" or double 1/2"
AJS 25, 30; BCI 90	2x lumber or equivalent wood panel thickness of multiple plies

- Nail backer block with minimum (10) – 10d nails.
- Butt gypsum board tight to backer block at edges.
- For continuous backer block installations, backer block material listed on page 4 provides required fire resistance. Install backer blocks per information shown on page 1.

AJS/BCI Bridging – Blocking

If AJS/BCI bridging or blocking is installed perpendicular to the joist length within a framing area for lateral nailing or floor performance purposes, those short pieces of joist do not require gypsum board web protection.