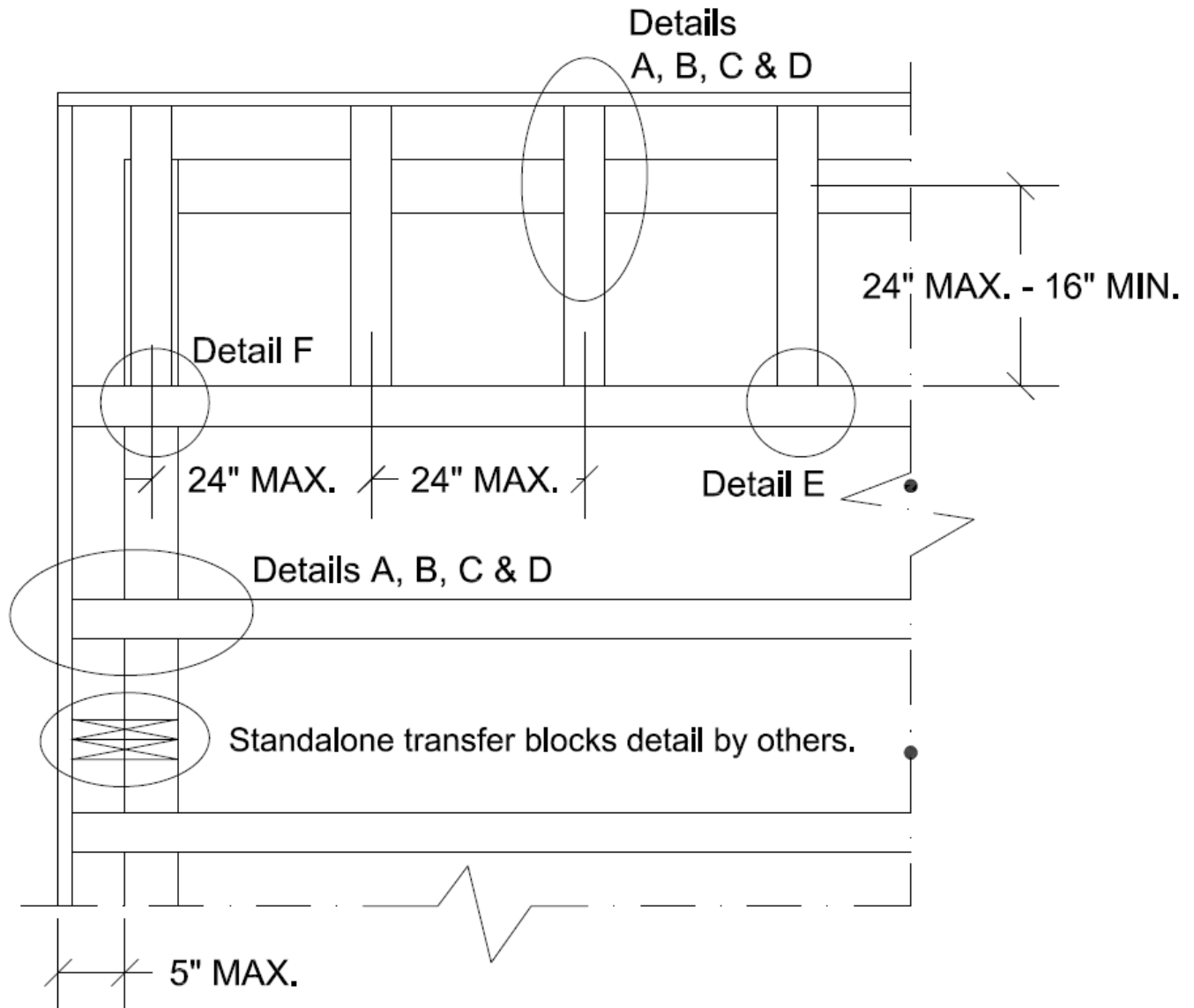




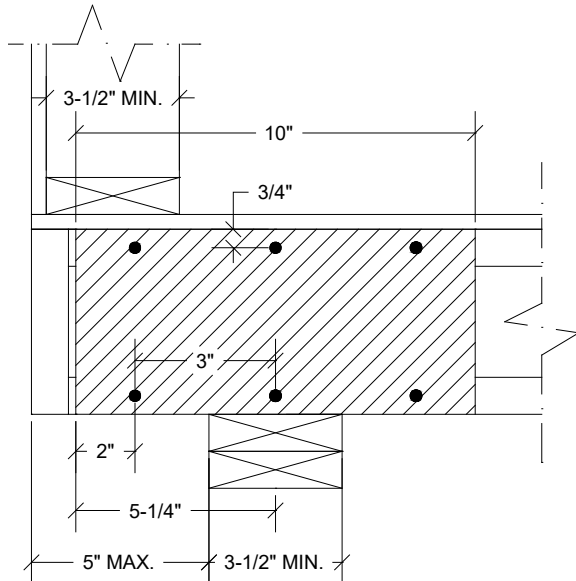
BRICK-LEDGE CANTILEVERS



General Notes:

- Maximum 5" cantilever includes the rim board thickness;
- **Blocking** is required at the bearing, but is not shown for clarity (see **Details G, H & I** for more information);
- Construction adhesive should be used between contact surfaces;
- These details are only applicable to single family residential constructions.

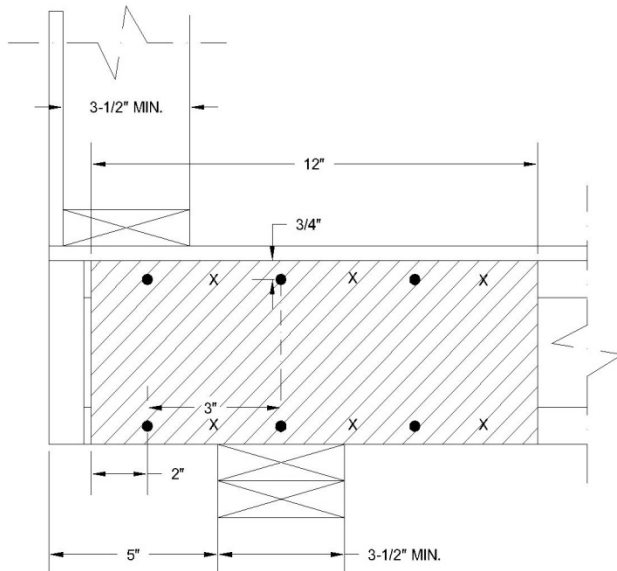
Detail A₁: 23/32" APA Rated OSB – Full Depth Reinforcing (one side)



- Nail 23/32" APA Rated Oriented Strand Board (10" long) with 2 rows of 3 - 8d Common Nails at 3" on center; minimum end distance = 2"; minimum edge distance = 3/4"

AJS/BCI Joist Depth (in)	Max. factored vertical load (lbs) for the offset bearing wall	
	23/32" APA Rated OSB Reinforcing (10" long)	
	2 rows of 3 - 8d Common Nails	
	One side	
9 1/2	2297	
11 7/8	2864	
14	3374	
16	3399	

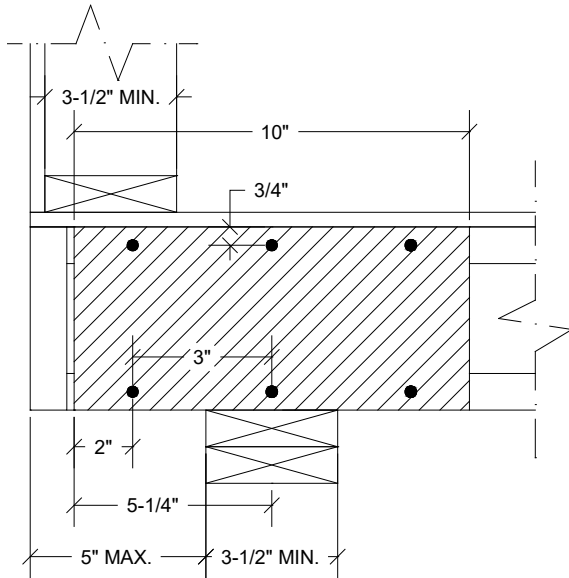
Detail A₂: 23/32" APA Rated OSB – Full Depth Reinforcing (both sides)



Nail 23/32" APA Rated Oriented Strand Board (12" long) with 2 rows of 3 - 8d Common Nails at 3" on center on both sides; minimum end distance = 2"; minimum edge distance = 3/4"

AJS/BCI Joist Depth (in)	Max. factored vertical load (lbs) for the offset bearing wall	
	23/32" APA Rated OSB Reinforcing (12" long)	
	2 rows of 3 - 8d Common Nails	
	Both sides	
9 1/2	2735	
11 7/8	3339	
14	3882	
16	4232	

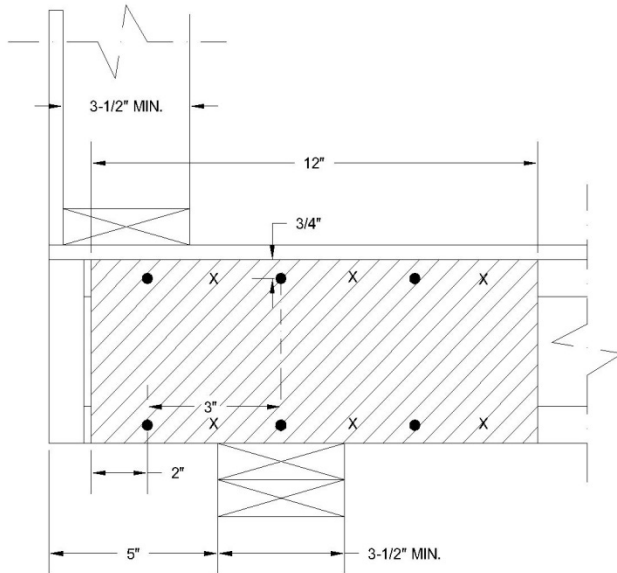
Detail B₁: 1-1/8" APA Rated Rim Board – Full Depth Reinforcing (one side)



- Nail 1-1/8" APA Rated Rim Board Reinforcing (10" long) with 2 rows of 3 - 10d Common Nails at 3" on center; minimum end distance = 2"; minimum edge distance = 3/4"

AJS/BCI Joist Depth (in)	Max. factored vertical load (lbs) for the offset bearing wall	
	1-1/8" APA Rated Rim Board Reinforcing (10" long)	
	2 rows of 3 - 10d Common Nails	
	One side	
9 1/2	2542	
11 7/8	3132	
14	3657	
16	3989	

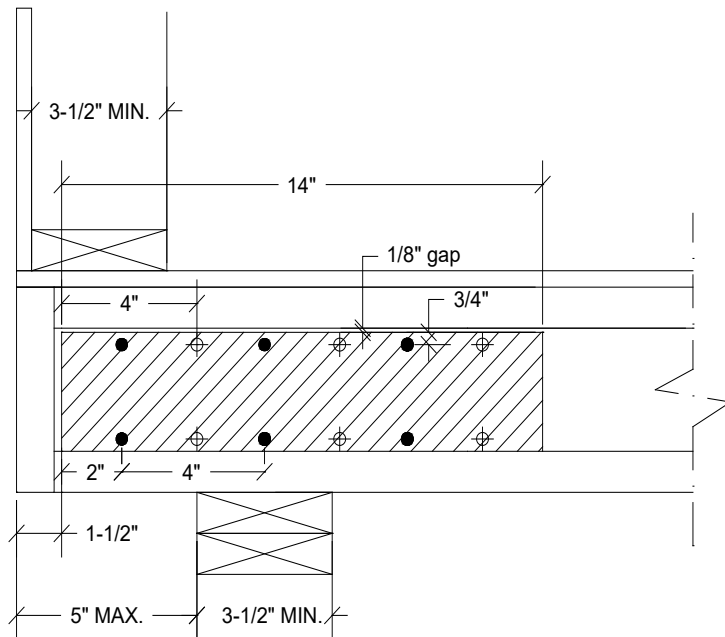
Detail B₂: 1-1/8" APA Rated Rim Board – Full Depth Reinforcing (both sides)



Nail 1-1/8" APA Rated Rim Board Reinforcing (12" long) with 2 rows of 3 - 10d Common Nails at 3" on center on both sides; minimum end distance = 2"; minimum edge distance = 3/4"

AJS/BCI Joist Depth (in)	Max. factored vertical load (lbs) for the offset bearing wall	
	1-1/8" APA Rated Rim Board Reinforcing (12" long)	
	2 rows of 3 - 10d Common Nails	
	Both sides	
9 1/2	3183	
11 7/8	3826	
14	4399	
16	4775	

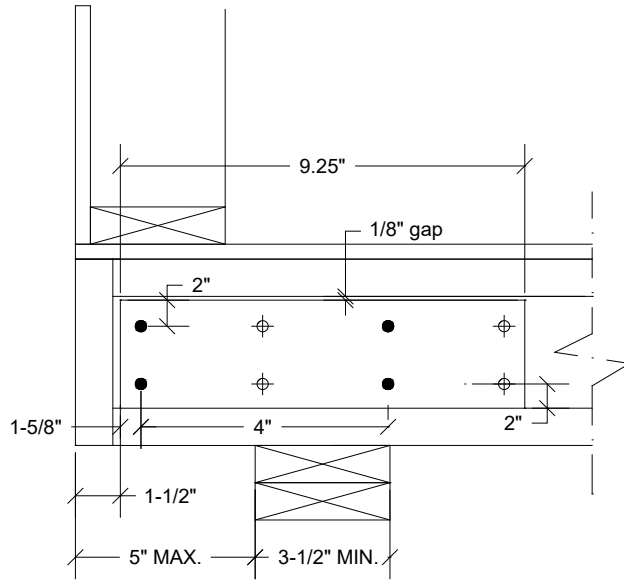
Detail C: 1" APA Rated Rim Board – Web Filler Reinforcing (both sides)



- Nail web filler (14" long) with 2 rows of 3 - 10d Common Nails at 4" on center (each side); minimum end distance = 2"; minimum edge distance = 3/4"
- Leave 1/8" gap between web filler and top flange

AJS/BCI Joist Depth (in)	Max. factored vertical load (lbs) for the offset bearing wall	
	1" APA Rated Rim Board - Web filler (14" long)	
	2 rows of 3 - 10d Common Nails	
	Web fillers on both sides	
9 1/2	2503	
11 7/8	3058	
14	3503	
16	3955	

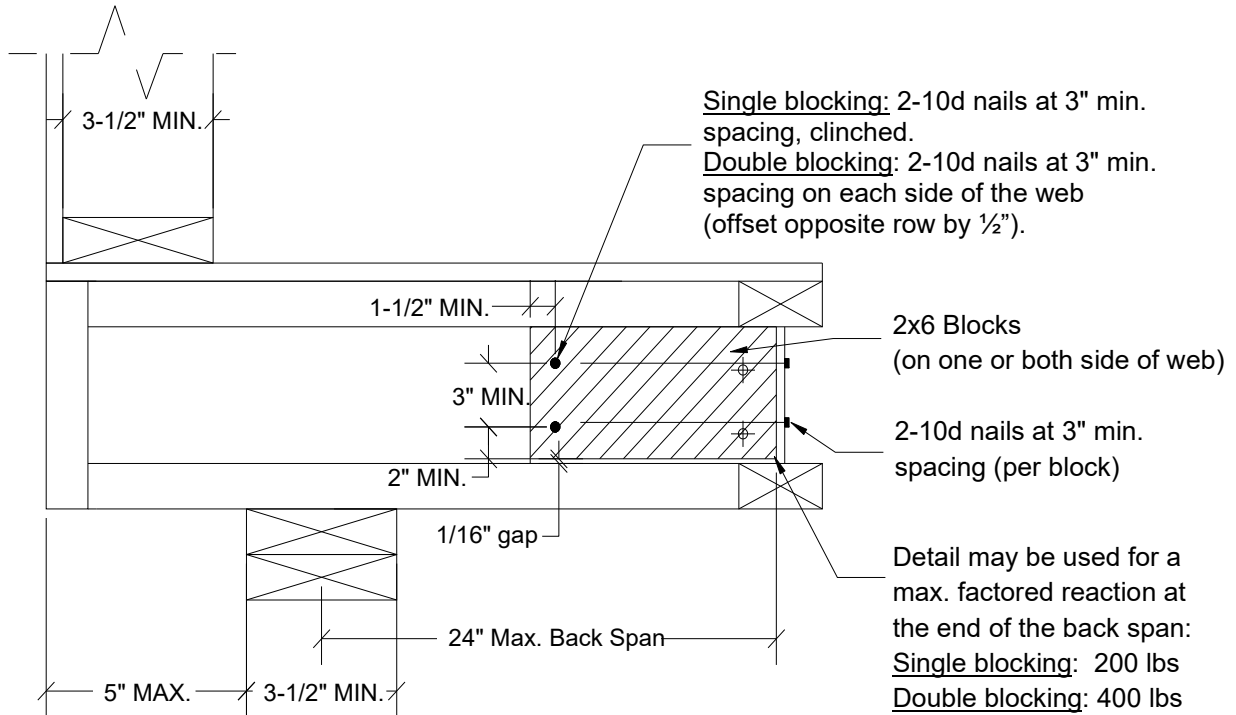
Detail D: 2x10 (SPF min) – Web Filler Reinforcing (both sides)



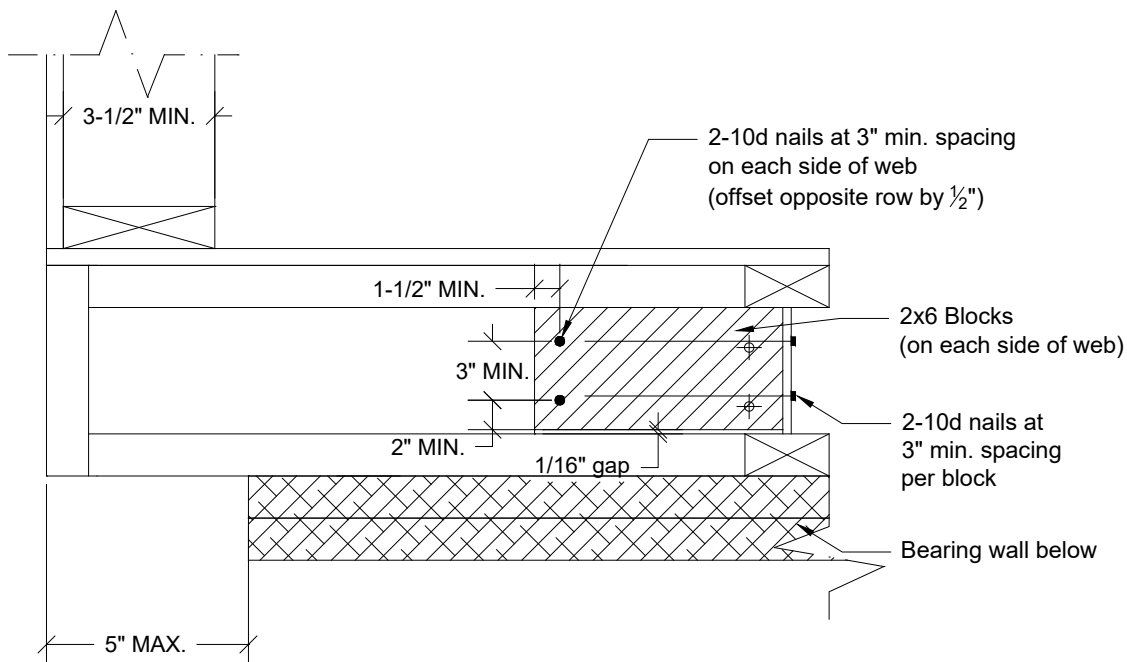
- Nail 2x10 web filler with 2 rows of 2 - 10d Common Nails at 4" on center (each side); minimum end distance = 1-5/8"; minimum edge distance = 2"
- Leave 1/8" gap between web filler and top flange

AJS/BCI Joist Depth (in)	Max. factored vertical load (lbs) for the offset bearing wall	
	2x10 SPF (min) - Web filler	
	2 rows of 2 - 10d Common Nails	
	Web fillers on both sides	
9 1/2	2292	
11 7/8	2857	
14	3314	
16	3772	

Detail E: Perpendicular Blocking at Exterior Wall with Brick



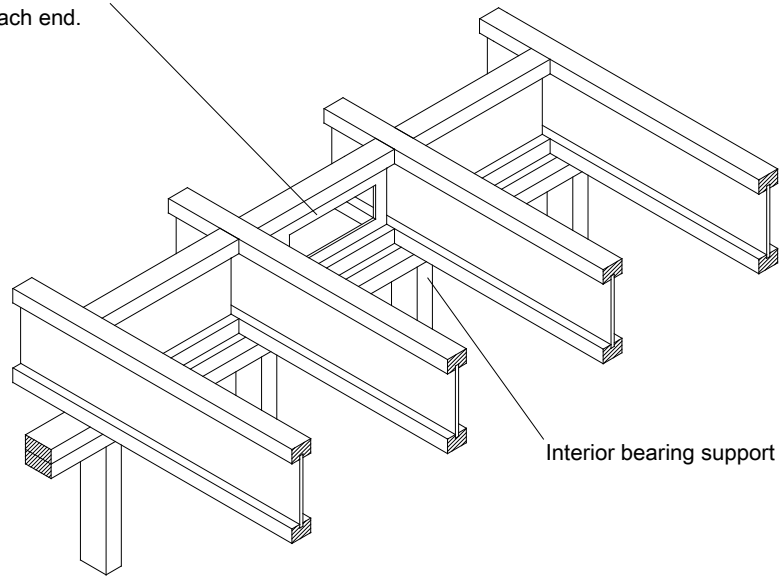
Detail F: Brick Cantilever – Corner Detail





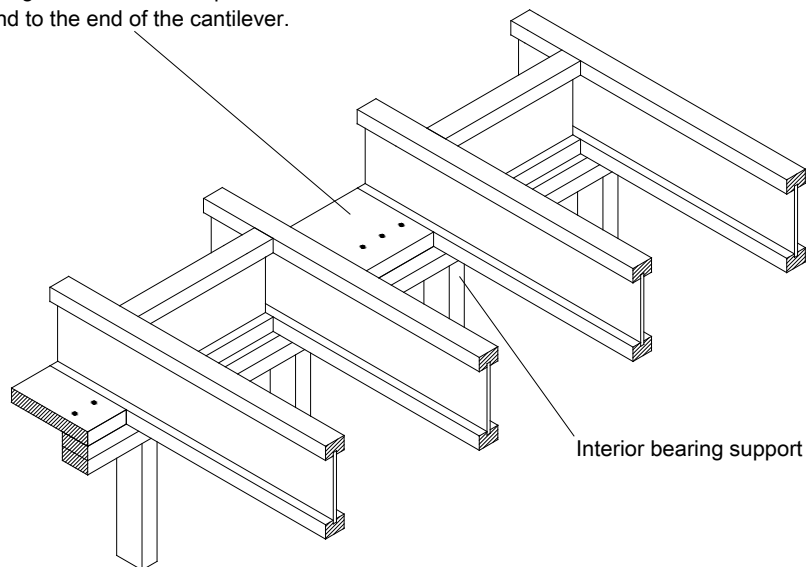
Detail G: Vertical Blocking at Interior Bearing Support

Holes allowed in blocking webs.
Minimum 3" web distance
required at each end.



Detail H: 2x_ Horizontal Blocking at Interior Bearing Support

Alternate 2x_ Horizontal Blocking.
Flat blocking should cover wall plate
and extend to the end of the cantilever.





Detail I: 2x_ Horizontal Blocking at the Interior Bearing Support (adjacent to the Brick Ledge Cantilever)

