

HIGH-PERFORMANCE **DROP SEALS** MAKE A BIG DIFFERENCE **FOR ANY DOOR**

athmer

B ————— W

available through
BRIDGEPORT WORLDWIDE

+1-800-362-1484 | sales@bridgeportworldwide.com
BridgeportWorldwide.com

LIT-ATHMR-006 BW25-013 05.2025

athmer

North American drop seal selections
every designer & builder should know

Made in Arnsberg, Germany

We are proud to present this focused selection of the products available from **athmer** through our partners in North America. It is intended to introduce you to athmer's wide range of unique solutions with their many features and capabilities. We hope you gain some appreciation of our dedication to engineering and manufacturing the best automatic door bottoms and other products that can help you deliver high-performance openings for your building projects.

We look forward to working with you.



responsible & reliable since 1711

family-owned for 10 generations

committed to quality and sustainability

manufacturing high-performance drop
seals and other door opening solutions
for over 70 years.



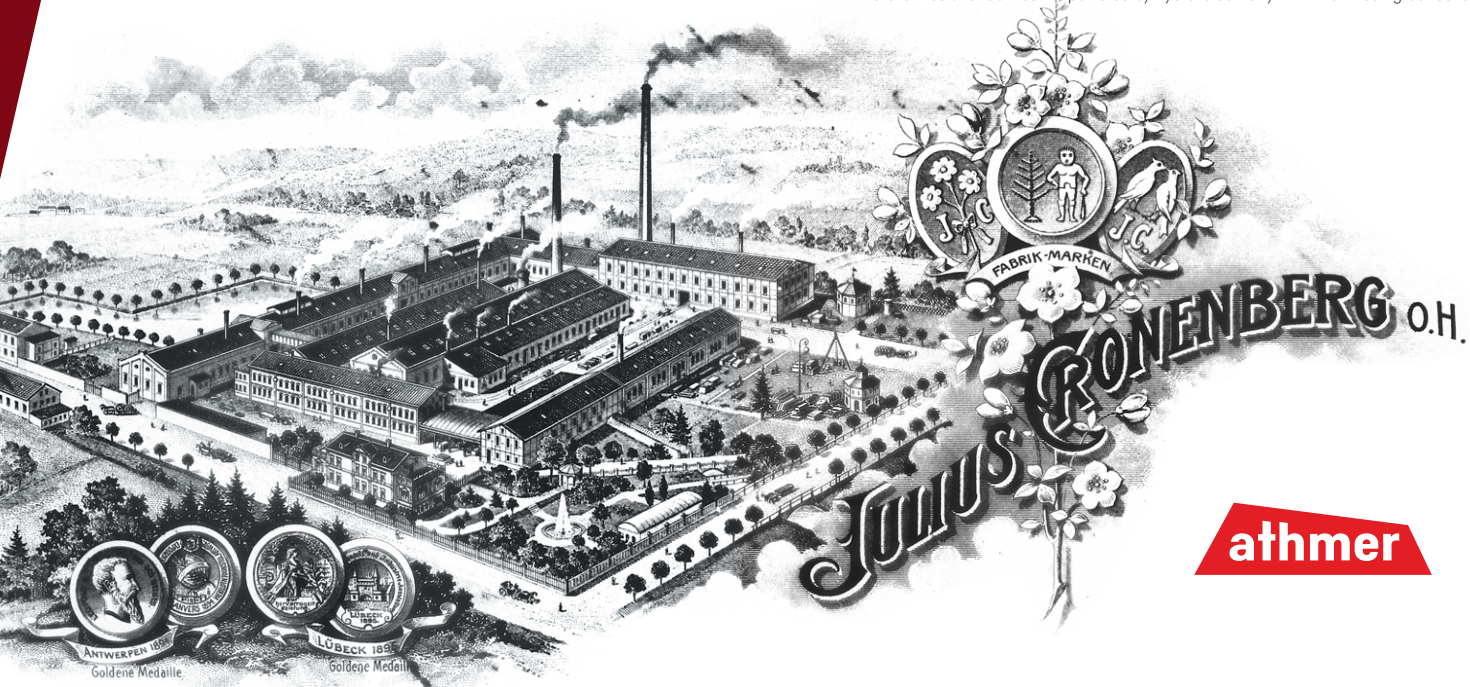
zero-emissions facilities



powered by hydro-electricity



low-tech groundskeepers



athmer

a brief history

athmer is part of the Julius Cronenberg Sophienhammer (JCS) group of companies. The group was founded in 1711, and has run continuously as a family-owned for over 300 years and through ten generations.

Its headquarters remains on the same site—the old Sophienhammer forge—which it purchased in 1870 and its operations have grown sustainably ever since, with the JCS group now incorporating ten companies. Family-owned and now in its 10th generation, JCS first made a name for itself in the late 19th Century as it developed the first branded scythe, an essential agricultural tool of the period, which they chose to manufacture without cutting corners, to deliver a product that out-performed and outlasted all the others on the market at the time.

The **athmer** logo is a nod to its origins in making state-of-the-art scythes.

Following the emergence of more modern agricultural techniques in the mid-1950's, JCS diversified into new markets, leading to the registration of the Kaltefeind® (enemy of the cold) brand and the birth of **athmer** as a manufacturer of automatic drop seals.



One of the ten enormous water-driven hammers used to pound the metal needed to create the famously long-lasting sharp edges of the JCS scythes in the late 19th century.

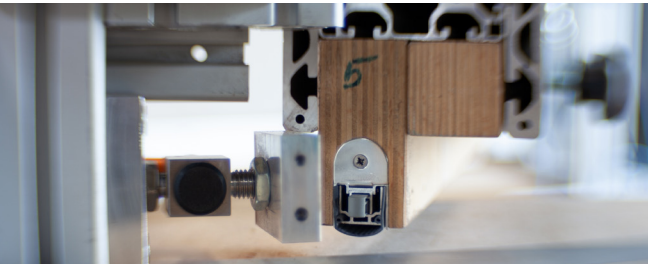
Today, both the Kaltefeind® and Schall-Ex® brands are synonymous with automatic drop seals and **athmer** has built on this experience. **athmer** has been the leading global specialist in the design and manufacture of high-performance sealing and finger protection systems since the 1950's. From our headquarters in Arnsberg, Germany a continued focus on development and innovation has facilitated our emergence as the premium choice in complete door sealing systems.

why athmer?

INNOVATIVE DESIGNS THAT ADDRESS REAL CHALLENGES



EXCEPTIONAL QUALITY STANDARDS & RIGOROUS TESTING



SUSTAINABLE & RESPONSIBLE MANUFACTURING PRACTICES

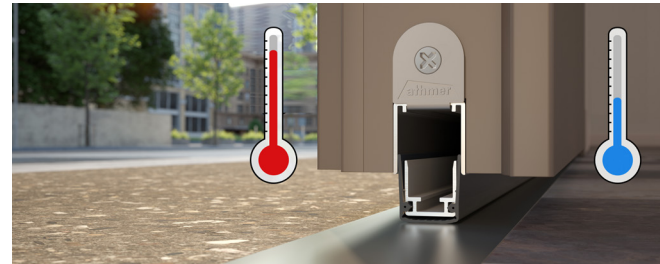


why drop seals?

KEEPING THE PEACE BY KEEPING OUT THE SOUND



KEEPING THE WARMTH OR THE COOL WHERE IT BELONGS



MAKING EVERY OPENING & THRESHOLD SAFE AND SOUND





Schall-Ex®
L-15/30 WS



Schall-Ex®
L-15/30 WS Pivot



Schall-Ex®
L-8/30 WS



Schall-Ex®
L-14/35 EK



Rainstop®
L-24/20 WS



Schall-Ex®
Ultra WS



Stadi®
LD-17/20 WS



Schall-Ex®
L-15 FS

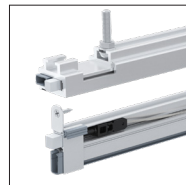
North American Offering



Schall-Ex®
Jumbo I



Schall-Ex®
GSA



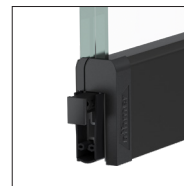
VHH M-12 Set



Schall-Ex®
Slide GSH-10



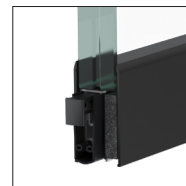
Schall-Ex®
M-12 WS



Schall-Ex®
Slide GSH-13



Schall-Ex®
Slide & Lock M-12 WS



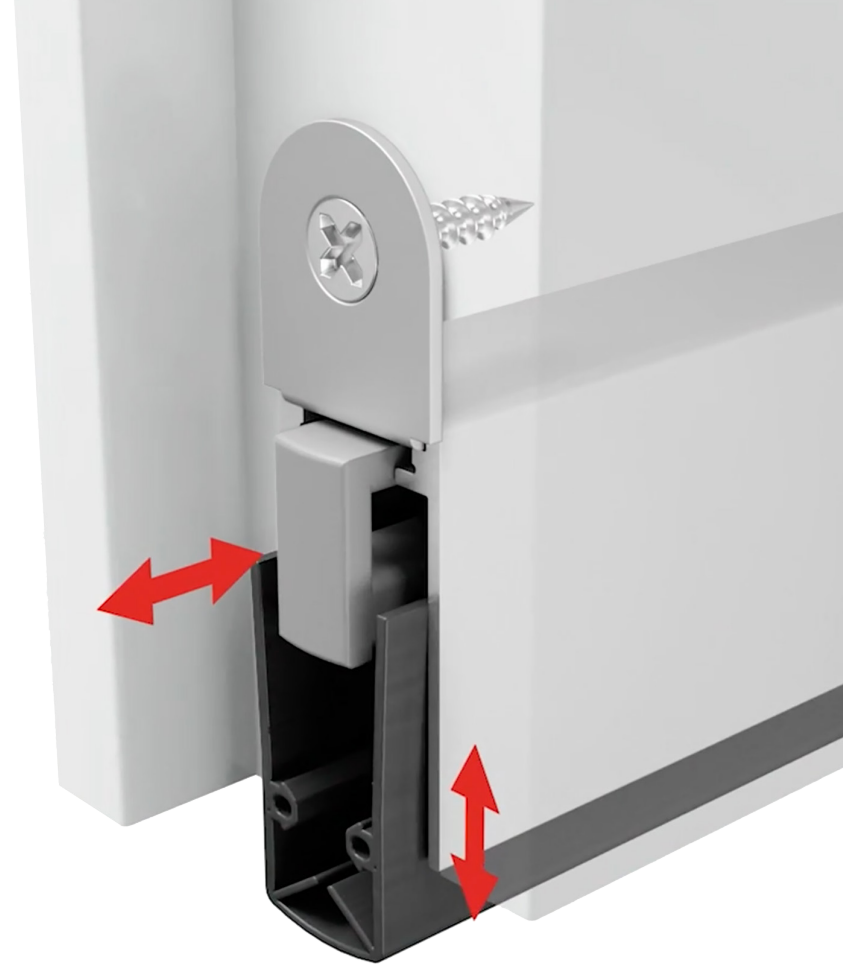
Schall-Ex®
Slide GSH-17

drop seal solutions by



made in Germany

available everywhere



Schall-Explainer

Sometimes, the basic model is all that's needed, delivering the essential requirements in a simple, complete, and elegant way. In the **athmer** drop seal universe, the Schall-Ex® line embodies The Basics, while establishing a new industry-wide benchmark for performance in a drop seal with such compact dimensions, and looking good doing it.

"Schall-Ex" translates as "Sound Out" and points to the core performance capability delivered by the line: **exceptionally high sound insulation value**. With a 7 mm undercut, the Schall-Ex® L-15 achieves values of 52 dB, and even with a 15 mm gap it is still as high as 51 dB, offering peace and quiet to any room.

A drop seal in every door? Though still a relatively foreign idea here, the Schall-Ex® line is so versatile that it's easy to see them being integrated into virtually any door in any material, and thereby elevating the quality of life for those who use them.

Some of its basic features even help ensure that the installation goes off without a hitch. For example, consider the standard Schall-Ex® removable actuator. It can be adjusted without tools. Its design means there is no need for a protective pressure strike plate on the jamb, a big aesthetic plus. In addition, on a gritty, debris-strewn construction site, you can simply remove the click-in actuator until all is clean and ready for hand-off. This way you won't suffer the embarrassment and cost of replacing silicone seals damaged by the usual job site chaos.



athmer

DROP SEALS
FOR COMPLETE DOORS

Schall-Ex® L-15/30 WS

Model : 1-880

the any-wood-door solution

DIMENSIONS

Groove width : **15 mm** [0.59"]

Groove height : **30 mm** [1.18"]

Maximum Travel : **20 mm** [0.79"]

PERFORMANCE

Acoustic : **52 dB** over 7 mm gap

Fire : UL10B & UL10C (R31866) 

Smoke : Certifire TS21 (CF 5675)

Function : MPA Certified, tested to 1 million cycles

TECHNICAL DATA

Application : hinged wood doors

Actuation : single-sided

Material : self-extinguishing fire-retardant silicone

Fixing : screwed both ends with fixing brackets

Minimum length : **235 mm** [9.25"]

Maximum length : **2000 mm** [78.74"]

Standard lengths : 708 mm [27.87"] / 833 [32.80"] /
958 [37.72"] / 1083 [42.64"] / 1208 [47.56"] / 1323 [52.09"] /
1448 [57.01"] / 1573 [61.93"] / 1698 [66.85"]

NOTE : Can be shortened by up to 125 mm [4.92"]
Custom lengths available by special order.



actual size



/ the classic **wood door** drop seal / **parallel actuation** minimizes friction with the floor / tool-free **actuator can be deactivated** during construction / actuator requires no protective press plate for the frame / **no lateral travel** during actuation avoids gaps at door frame

athmer

Schall-Ex® L-15/30 WS Pivot

Model : 1-946

heavy-duty pivot door solution

DIMENSIONS

Groove width : **15 mm** (0.59")

Groove height : **30 mm** (1.18")

Maximum Travel : **20 mm** (0.79")

PERFORMANCE

Acoustic : **52 dB** over 7 mm gap

Fire : UL10B & UL10C (R31866) 

Smoke : Certifire TS21 (CF 5675)

Function : MPA Certified, tested to 1 million cycles

TECHNICAL DATA

Application : pivoting wood doors

Actuation : single-sided roller actuator

Material : self-extinguishing fire-retardant silicone

Fixing : screwed into both ends with fixing brackets

Minimum length : **235 mm** (9.25")

Maximum length : **2335 mm** (91. 93")

Standard lengths : 833 mm (32.80") / 958 (37.72") /
1083 (42.64") / 1208 (47.56") / 1260 (49.61") / 1385 (54.53") /
1510 (59.45") / 1635 (64.37") / 1760 (69.29") / 1885 (74.21")

NOTE : Above can be shortened by up to 125 mm (4.92").

2032 (80.00")-cut ≤146 mm / 2159 (85.00")-cut ≤149 mm /

2286 (90.00")-cut ≤152 mm

Custom lengths available on request.



actual size



/ **heavy-duty** pivot door sealing solution / **parallel actuation**
minimizes friction with the floor / tool-free **actuator can be deactivated** during construction / can be deployed toward
the floor or into the ceiling / **no lateral travel** during actuation
avoids gaps at door frame

athmer

Schall-Ex® L-8/30 WS

Model : 1-1000

the narrowest drop seal solution

DIMENSIONS

Groove width : **8 mm** [0.31"]

Groove height : **30 mm** [1.18"]

Maximum Travel : **20 mm** [0.79"]

PERFORMANCE

Acoustic : up to **49 dB** over 7 mm gap

Fire : UL10B & UL10C (R31866) 

Smoke : Certifire TS21 (CF 5675)

Function : MPA Certified, tested to 1 million cycles

TECHNICAL DATA

Application : hinged wood doors

Actuation : single-sided

Material : self-extinguishing fire-retardant silicone

Fixing : screwed into both ends with fixing brackets

Minimum length : **235 mm** [9.25"]

Maximum length : **2000 mm** [78.74"]

Standard lengths : 708 mm [27.87"] / 833 [32.80"] /

958 [37.72"] / 1083 [42.64"] / 1208 [47.56"] /

1323 [52.09"] / 1448 [57.01"] / 1573 [61.93"] / 1698 [66.85"]

NOTE : Can be shortened by up to 125 mm [4.92"]

Custom lengths available by special order.



actual size



/ **narrowest seal available** for wood doors / **parallel actuation**
minimizes friction with the floor / tool-free **actuator can be**
deactivated during construction / **no lateral travel** during
actuation avoids sound travel gaps at the door frame

Schall-Ex® L-14/35 EK

Model : 1-935

the neat & tidy solution

DIMENSIONS

Groove width : **14 mm** [0.55"]

Groove height : **35 mm** [1.38"]

Maximum Travel : **20 mm** [0.79"]

PERFORMANCE

Acoustic : up to **51 dB** over 7 mm gaps

Fire : UL10B & UL10C (R31866) 

Smoke : Certifire TS21 (CF 5675)

Function : MPA Certified, tested to 200,000 cycles

TECHNICAL DATA

Application : hinged wood doors

Actuation : single-sided

Material : self-extinguishing fire-retardant silicone

Fixing : screwed both sides with fixing brackets

Minimum length : **235 mm** [9.25"]

Maximum length : **2000 mm** [78.74"]

Standard lengths : 635 mm [25.00"] / 735 [28.94"] /
835 [32.87"] / 935 [36.81"] / 1035 [40.75"] / 1135 [44.69"] /
1235 [48.62"] / 1335 [52.56"] / 1435 [56.50"] /
1535 [60.43"] / 1635 [64.37"]

NOTE : Can be shortened by up to at least 100 mm [3.94"].

Consult your dealer for specific cut lengths.

Custom lengths available by special order.



actual size



- / **closed end plates** (22x60 mm) conceal gasket within
- / **parallel actuation** minimizes friction with the floor
- / tool-free **actuator can be deactivated** during construction
- / low-pressure actuator requires no protective press plate for the door frame

athmer

Rainstop® L-24/20 WS

Model : 1-955

the ultimate weatherproof solution

DIMENSIONS

Groove width : **24 mm** [0.94"]

Groove height : **20 mm** [0.79"]

Maximum Travel : **16 mm** [0.63"]

PERFORMANCE

Acoustic : up to **51 dB** over 7 mm gap

Fire : UL10B & UL10C (R31866) 

Smoke : Certifire TS21 (CF 5675)

Function : MPA Certified, tested to 1 million cycles

TECHNICAL DATA

Application : hinged timber doors

Actuation : single-sided

Material : self-extinguishing silicone

Fixing : screwed both sides with fixing brackets

Minimum length : **230 mm** [9.06"]

Maximum length : **2000 mm** [78.74"]

Standard lengths : 750 mm [29.53"] / 900 [35.43"] /

1050 [41.34"] / NOTE : Above can be shortened by up to

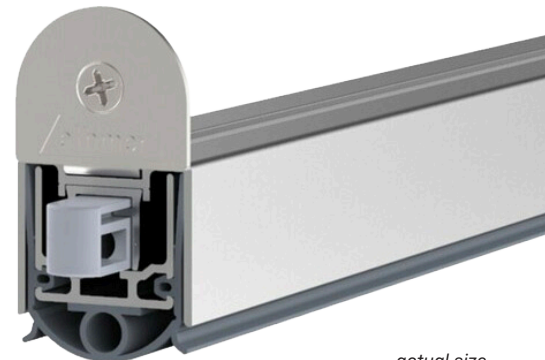
150 [5.91"] / 1250 [49.21"] - cut ≤205 [8.07"] /

1397 [55.00"] - cut ≤190 [7.48"] / 1524 [60.00"] - cut ≤203

[7.99"] / 1651 [65.00"] - cut ≤130 [5.12"] / 1778 [70.00"] -

cut ≤222[8.74"] / 1905 [75.00"] - cut ≤190 [7.48"]

Custom lengths available on request.



actual size



/ protects against wind and driving rain / air permeability tested [EN 12207, Class 4, **600 pascal**] / watertightness tested [EN 12208, Class 7] / wind load tested [EN 12210] / salt spray test to EN 1670, **Class 5, (480 hours)** / no lateral travel during actuation enhances gasket position / **zero-threshold solution** for universal design

Schall-Ex® Ultra WS


Model : 1-291

the corrosion-resistant solution

DIMENSIONS

Groove width : **20 mm** [0.79"]
Groove height : **30 mm** [1.18"]
Maximum Travel : **12 mm** [0.47"]

PERFORMANCE

Acoustic : up to **51 dB** over 7 mm gap
Fire : UL10B & UL10C (R31866) 
Smoke : Certifire TS21 (CF 5675)
Function : MPA Certified, tested to 1 million cycles

TECHNICAL DATA

Application : hinged timber doors
Actuation : single-sided (double-sided available)
Material : self-extinguishing silicone
Fixing : screwed both sides with fixing brackets

Minimum length : **220 mm** [8.66"]
Maximum length : **2000 mm** [78.74"]

Standard lengths : 708 mm [27.87"] / 833 [32.80"] /
958 [37.72"] / 1083 [42.64"] / 1208 [47.56"] /
1260 [49.61"] / 1385 [54.53"] / 1510 [59.45"] /
1635 [64.37"] / 1760 [69.29"] / 1885 [74.21"]

NOTE : Can be shortened by up to 125 mm [4.92"]
Custom lengths available on request.



/ ideal for use in high humidity and coastal environments /
features anodized aluminum profile and stainless steel
springs / **salt spray test** to EN 1670, **Class 5, (480 hours)**
/ **overload protection** protects seal from excessive wear /
available as bottom-mounted profile (1-292, Ultra OS)

Stadi LD-17/20 WS

Model : 1-953

DIMENSIONS

Groove width : 17 mm [0.67"]

Groove height : 20 mm [0.79"]

Travel : 16 mm [0.63"]

PERFORMANCE

Acoustic : up to **52 dB** over 7 mm gap

Fire : UL10B & UL10C (R31866) 

Smoke : Certifire TS21 (CF 5675)

Function : MPA Certified to 1 million cycles

TECHNICAL DATA

Application : hinged timber doors

Actuation : single, **with delayed drop**

Material : self-extinguishing silicone

Fixing : screwed both sides with fixing brackets

Minimum length : **635 mm** [25.00"]

Maximum length : **1600 mm** [62.99"]

Standard lengths : 750 mm [29.50"] / 900 [35.43"] /

1050 [41.34"] / 1200 [47.24"]

NOTE : Can be shortened by up to 150 mm [5.91"].

Custom lengths available on request.

the delayed deployment solution



/ the modular Stadi line includes models **with and without delayed drop function**. Stadi L-17/20 WS would be the corresponding non-delay model. **Other profiles available : 17/17, 20/20, 24/20 / delay mechanism** ideal for airlock and positive-pressure rooms / **parallel actuation** minimizes friction with the floor / **tool-free actuator can be deactivated** during construction phase / **overload protection** prevents seal from excessive wear

athmer

Schall-Ex® L-15 FS

Model : 1-884 (C-0), 1-885 (C-31), 1-888 (RAL 9016)

the versatile retrofit solution

DIMENSIONS

Total width : **17.2 mm** (0.68")

Total height : **54 mm** (2.13")

Travel : **20 mm** (0.79")

PERFORMANCE

Acoustic : up to **51 dB** over 7 mm gap

Fire : UL10B & UL10C (R31866) 

Smoke : Certifire TS21 (CF 5675)

Function : MPA Certified, tested to 200,000 cycles

TECHNICAL DATA

Application : hinged timber doors

Actuation : single-sided

Material : self-extinguishing fire-retardant silicone

Fixing : surface-mounted to the door, screw fixed

Minimum length : **235 mm** (9.25")

Maximum length : **2335 mm** (91.93")

Standard lengths : 805 mm (31.69") / 930 (36.61") /
1055 (41.54") / 1180 (46.46") / 1305 (53.15")

NOTE : Can be shortened by up to 125 mm (4.92")

Custom lengths available on request.



/ **surface-mounted** drop seal / concealed screws and snap-on cover profile / **parallel actuation** minimizes friction with the floor / tool-free **actuator can be deactivated** during construction phase / **no lateral travel** during actuation avoids gaps at door frame / standard finish is silver anodized (C-0), and also available in anodized brushed stainless steel (C-31), and white (RAL 9016)

Schall-Ex® Jumbo I

Model : 1-154

the bigger undercut solution

DIMENSIONS

Groove width : **19.5 mm** [0.77"]

Groove height : **50 mm** 1.97"]

Travel : **35 mm** [1.38"]

PERFORMANCE

Function : MPA Certified, tested to 200,000 cycles

TECHNICAL DATA

Application : hinged timber doors

Actuation : single-sided via adjustable screw

Material : self-extinguishing fire-retardant silicone

Fixing : screwed both sides with fixing brackets

Minimum length : **450 mm** [17.72"]

Maximum length : **1800 mm** [70.87"]

Standard lengths : 708 mm [27.87"] / 833 [32.80"] /

958 [37.72"] / 1083 [42.64"] / 1208 [47.56"]

NOTE : Can be shortened by up to 60 mm [2.36"].

Custom lengths available by special order.



actual size



/ for doors with larger undercuts up to 35 mm [1-3/8"] / other Jumbo models are available for undercuts up to 50 mm / **parallel actuation** minimizes friction with the floor / adjustable screw actuation on hinge side / **no lateral travel** during actuation avoids gaps at door frame

VHH M-12 (set)

Model : 1-839

DIMENSIONS

Groove width : **12 mm** [0.47"] + 5 mm for guide slot

Groove height : **35 mm** [1.38"]

Maximum Travel : **11 mm** [0.43"]

PERFORMANCE

Acoustic : depends on application

Function : MPA Certified to 200,000 cycles

TECHNICAL DATA

Application : hinged timber doors

Actuation : single-sided via adjustable screw

Material : self-extinguishing fire-retardant silicone

Fixing : screwed both sides with fixing brackets

Minimum length : **280 mm** [11.02"]

Maximum length : **1958 mm** [77.09"]

Standard lengths : 708 mm [27.87"] / 833 [32.80"] /

958 [37.72"] / 1083 [42.64"] / 1208 [47.56"]

NOTE : Can be shortened by up to 125 mm [4.92"]

Custom lengths available on request.



/ top and bottom seal solution for sliding doors / patented top profile can be fitted with M8 bolt to most top-hung sliding door track systems (*not included*) / works for both pocket and surface sliding doors / magnets supplied for situations without positive latching

Schall-Ex® Slide M-12 WS

Model : 1-548

the simple sliding door solution

DIMENSIONS

Groove width : **12 mm** [0.47"] + 5 mm for guide slot

Groove height : **35 mm** [1.38"]

Travel : **11 mm** [0.43"]

PERFORMANCE

Acoustic : up to **49 dB** over 7 mm gap

Function : MPA Certified to 200,000 cycles

TECHNICAL DATA

Application : sliding timber doors

Actuation : single-sided via adjustable screw

Material : self-extinguishing fire-retardant silicone

Fixing : screwed both sides with fixing brackets

Minimum length : **280 mm** [11.02"]

Maximum length : **1958 mm** [77.09"]

Standard lengths : 708 mm [27.87"] / 833 [32.80"] /

958 [37.72"] / 1083 [42.64"] / 1208 [47.56"]

NOTE : Can be shortened by up to 125 mm [4.92"]

Custom lengths available on request.



actual size



- / sliding door seal for doors with positive latching hardware
- / low activation pressure actuator for ease of use, requires no protective press plate for the frame

Schall-Ex® Slide & Lock M-12 WS

Model : 1-549

the sliding & latching solution

DIMENSIONS

Groove width : **12 mm** [0.47"] + 5 mm for guide slot

Groove height : **35 mm** [1.38"]

Travel : **11 mm** [0.43"]

PERFORMANCE

Acoustic : up to **49 dB** over 7 mm gap

Tested to 200,000 cycles

TECHNICAL DATA

Application : sliding wood doors

Actuation : single-sided via flat actuator

Material : self-extinguishing fire-retardant silicone

Fixing : screwed both sides with fixing brackets

Minimum length : **280 mm** [11.02"]

Maximum length : **1958 mm** [77.09"]

Standard lengths : 708 mm [27.87"] / 833 [32.80"] /

958 [37.72"] / 1083 [42.64"] / 1208 [47.56"]

NOTE : Can be shortened by up to 125 mm [4.92"]

Custom lengths available on request.



actual size



- / sliding door seal for doors without positive latching hardware
- / integrated magnetic catch to prevent unintentional opening
- / no press plate required on the frame due to non-marring actuator design

glass solutions

The **athmer** range of drop seals for glass doors has been developed with an emphasis on the strict aesthetic requirements required by frameless glass construction and with the idea to reduce the seal's visual impact as much as possible. Slim profiles and clever design traits allow the products to blend seamlessly with the door and its hardware whilst achieving the necessary performance.

The seal drops automatically when the door is closed to form a seal with the floor, retracting when the door is opened to ensure the door operation is unhindered. Our range can achieve this with a range of glass thicknesses starting from 1/4" up to 3/4".

Their main purpose, as with our other solutions, is to provide an effective barrier against sound transfer at the door threshold, as well as isolating smoke, air, light, dirt, dust, insects and odors.



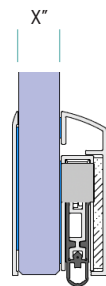
The New Schall-Ex® Family of Glass Drop Seal Solutions

design & seal in harmony

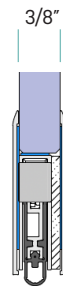
Our new glass seal family meets the increased design and sound insulation requirements of the glass door and demountable partition markets. As a modular system, the re-engineered Schall-Ex® glass offering establishes a consistent overall profile height for all glass thicknesses, including 3/8", 1/2", 11/16", for tempered or laminated safety glass. The drop seal can be handed in the field by simply turning it, and, by popular demand, features a black silicone seal profile and actuator as standard. The actuator allows the drop seal to be used for swing as well as sliding doors.

The new **athmer** drop seal family meets all of its technical and qualitative standards, and features their removable sliding actuator, removable inner rail, and parallel actuation with no lateral offset to eliminate dragging. The Schall-Ex® glass door drop seals are unique in the market as they are supplemented by a simple, very strong, and reliable bonding technology, the door can be installed immediately after bonding to the glass surface.

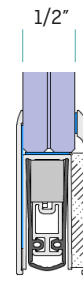
athmer



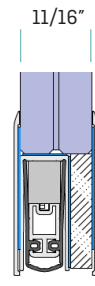
Schall-Ex®
GSA



Schall-Ex®
GSH-10



Schall-Ex®
GSH-13



Schall-Ex®
GSH-17

Schall-Ex® GSA

Model : 1-1110 (C-0), 1111 (C-31), 1112 (RAL 9005)

the retrofit glass solution

DIMENSIONS

Profile : **11.6 mm** (0.46") x **40 mm** (1.57")

For minimum glass thickness : **8 mm** (0.31")

Maximum Travel : **20 mm** (0.79")

PERFORMANCE

Acoustic : for glass with insulation value up to **37 dB** $R_{w,P}$

Function : MPA Certified, tested to 1 million cycles

TECHNICAL DATA

Application : hinged and sliding glass doors

Actuation : single-sided

Material : self-extinguishing fire-retardant silicone

Fixing : bonded with adhesive tape included (no wet bonding)

Minimum length : **235 mm** (9.25")

Maximum length : **2000 mm** (78.74")

Standard lengths : 708 mm (27.87") / 833 (32.80") /

958 (37.72") / 1083 (42.64") / 1208 (47.56")

NOTE : Can be shortened by up to 125 mm (4.92")

Custom lengths available by special order.

Standard finishes : anodized silver-colored (C-0), matte black (RAL 9005), brushed stainless steel look (C-31)

Other finishes available upon request.s



- / solution for frameless toughened or laminated glass **swing or sliding doors** of any thickness / silicone gasket in graphite black
- / **parallel actuation** minimizes friction with the floor
- / **removable inner rail** for easy repair/maintenance

Schall-Ex® GSH-10

Model : 1-1130 [C-0], 1131 [C-31], 1132 [RAL 9005]

the clean line glass solution

DIMENSIONS

Profile : **13 mm** [0.51"] x **40 mm** [1.57"]

For glass thickness : **10 mm** [0.39"]

Maximum Travel : **20 mm** [0.79"]

PERFORMANCE

Acoustic : for glass with insulation value up to **32 dB** Rw,P

Function : MPA Certified, tested to 1 million cycles

TECHNICAL DATA

Application : hinged and sliding glass doors

Actuation : single-sided

Material : self-extinguishing fire-retardant silicone

Fixing : bonded with adhesive tape included (no wet bonding)

Minimum length : **235 mm** [9.25"]

Maximum length : **2000 mm** [78.74"]

Standard lengths : 708 mm [27.87"] / 833 [32.80"] /

958 [37.72"] / 1083 [42.64"] / 1208 [47.56"]

NOTE : Can be shortened by up to 125 mm [4.92"]

Custom lengths available by special order.

Standard finishes : anodized silver-colored [C-0], matte

black [RAL 9005], brushed stainless steel look [C-31]

Other finishes available upon request.



actual size



/ solution for frameless toughened or laminated glass **swing**
or sliding doors of thickness of up to **3/8" (10 mm)** / silicone
gasket in graphite black / **parallel actuation** minimizes friction
with the floor / **removable inner rail** for easy repair/maintenance

athmer

Schall-Ex® GSH-13

Model : 1-1150 [C-0], 1151 [C-31], 1152 [RAL 9005]

the clean line glass solution

DIMENSIONS

Profile : **18.8 mm** [0.74"] x **40 mm** [1.57"]

For glass thickness : **12.76 mm** [0.50"]

Maximum Travel : **20 mm** [0.79"]

PERFORMANCE

Acoustic : for glass with insulation value up to **38 dB** Rw,P

Function : MPA Certified, tested to 1 million cycles

TECHNICAL DATA

Application : hinged and sliding glass doors

Actuation : single-sided

Material : self-extinguishing fire-retardant silicone

Fixing : bonded with adhesive tape included (no wet bonding)

Minimum length : **235 mm** [9.25"]

Maximum length : **2000 mm** [78.74"]

Standard lengths : 708 mm [27.87"] / 833 [32.80"] /

958 [37.72"] / 1083 [42.64"] / 1208 [47.56"]

NOTE : Can be shortened by up to 125 mm [4.92"]

Custom lengths available by special order.

Standard finishes : anodized silver-colored [C-0], matte black [RAL 9005], brushed stainless steel look [C-31]

Other finishes available upon request.



actual size



/ solution for frameless toughened or laminated glass swing of thickness of **1/2" (12.76 mm)** / silicone gasket in graphite black / **parallel actuation** minimizes friction with the floor / **removable inner rail** for easy repair/maintenance

athmer

Schall-Ex® GSH-17

Model : 1-1160 [C-0], 1161 [C-31], 1162 [RAL 9005]

the clean line glass solution

DIMENSIONS

Profile : **20.5 mm** [0.81"] x **40 mm** [1.57"]

For glass thickness : **17.52 mm** [0.69"]

Maximum Travel : **20 mm** [0.79"]

PERFORMANCE

Acoustic : for glass with insulation value up to **40 dB** R_w ,P

Function : MPA Certified, tested to 1 million cycles

TECHNICAL DATA

Application : hinged and sliding glass doors

Actuation : single-sided

Material : self-extinguishing fire-retardant silicone

Fixing : bonded with adhesive tape included (no wet bonding)

Minimum length : **235 mm** [9.25"]

Maximum length : **2000 mm** [78.74"]

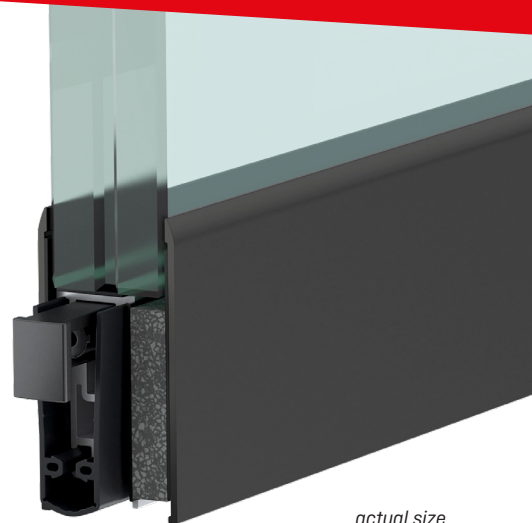
Standard lengths : 708 mm [27.87"] / 833 [32.80"] /
958 [37.72"] / 1083 [42.64"] / 1208 [47.56"]

NOTE : Can be shortened by up to 125 mm [4.92"]

Custom lengths available by special order.

Standard finishes : anodized silver-colored [C-0], matte
black [RAL 9005], brushed stainless steel look [C-31]

Other finishes available upon request.



/ frameless drop seal for 8+8 mm laminated or toughened
glass swing doors of **11/16" (17.52 mm)** / silicone gasket in
graphite black / **parallel actuation** minimizes friction with the
floor / **removable inner rail** for easy repair/maintenance

A group of four children are walking through a white door. The door is equipped with a white, fan-like device (athmer) mounted on the frame. The children are wearing backpacks and casual clothing. The scene is brightly lit, suggesting a school hallway. In the background, a staircase and other hallway features are visible.

athmer

OTHER PRODUCTS
FOR COMPLETE DOOR OPENINGS

Universal M-12 Sliding Door System

a complete surround sound solution

Boost your STC* Rating

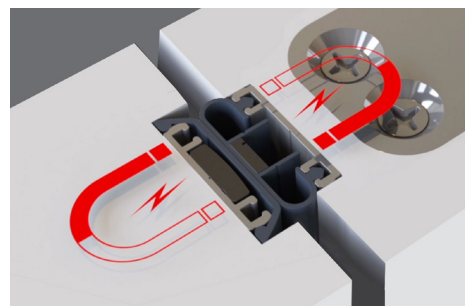
The **athmer** Universal M-12 system, effectively seals any glass, timber, or metal surface-sliding door on four sides without affecting the appearance. The system is available for doors up to a size of 2 x 3 meters.

*Sound Transmission Class rating

Slide Magnet Perimeter Seal

This patented set of compact magnetic seals is installed with each opposite the other on the edge of the door and the jamb. The seal is only engaged when the door is in the closed position. This will work with sliding doors, hinged doors or pivot doors.

[LEARN MORE](#)



*barrier-free
solution featuring
a side-pull actuator*

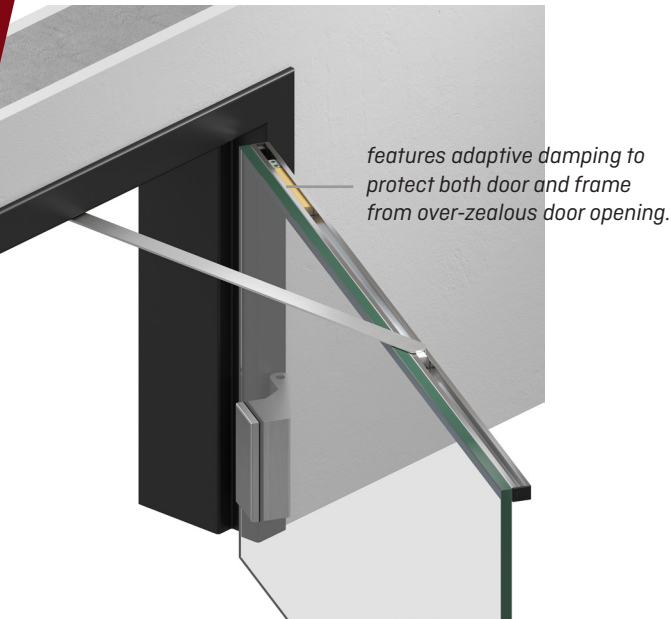
athmer

Porti Door Restrictor

adjustable solution for swing doors

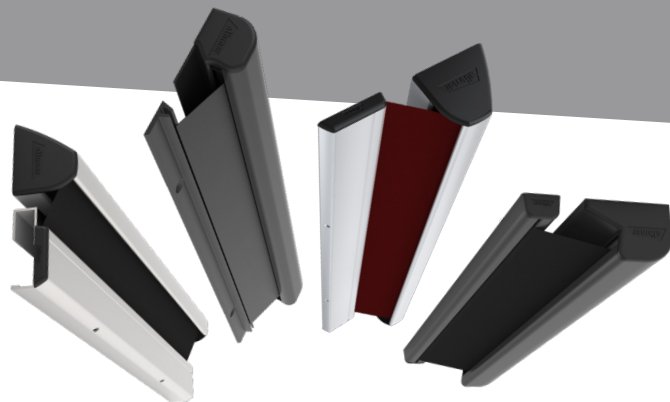
The Porti® door opening restrictor stops and brakes the door at any position you wish, effectively guarding against the damage that can occur by opening doors without them. It is designed for use with wood and glass doors, and on metal or wooden door frames. The opening angle can be individually set as well as continuously adjustable to a maximum of 120 degrees.

The Porti® is a safety-first product for projects with high demands on design, hygiene and accessibility, in any residential or commercial setting. Models are available for wood doors up to 220 lbs and glass doors up to 110 lbs. They are available in several finishes, and are easy to retrofit on metal frames and doors.



Fingerschutz®

protection for big & small hands



Whether in schools, hospitals, or elder care facilities, protecting fingers from avoidable crushing injuries between a hinged door and the jamb is possible without having to compromise the aesthetic appearance of the opening. The compact **athmer** Finger Protector **NR-32 UniSafe®** is quick to install and offers its profile and durable fabric in a variety of finishes to make it easy to integrate into any project.

Learn more : athmer.com

athmer

sound matters

Most people are not aware of the impact sound and noise can have on human health.

Your standard interior door in a living area has an undercut (opening between door and floor) of approximately 7 mm and thus the whole door can have a sound insulation of about 23 dB. With a floor gap of 10 mm, you're down to 18 dB. With an automatic drop seal from **athmer**, you can reduce these disturbances significantly—up to 52 dB—and thus create a more pleasant and healthier living environment.

Scientists have found that continuous sound levels (longer than 0.2 sec) of 60 dB during sleep already leads to stress reactions in the body, and 80 dB sound can cause long-term physical damage can occur. For a quiet and restful sleep, background noise must not exceed 40 dB.

Using automatic drop seals from **athmer**, you can substantially reduce disturbing sound and thus create a more pleasant and healthier environment.

what is a decibel?

A decibel (dB) is a unit that measures the intensity of acoustic pressure. Zero decibels is barely perceivable by human beings, while 120 dB is considered to be the threshold of pain and can cause permanent physical hearing damage. Decibels are measured on a logarithmic scale, which means that an increase of 10 dB corresponds to an increase in intensity by a factor of 10. The acoustic pressure of 120 dB is thus one million times that of zero decibels.

dB

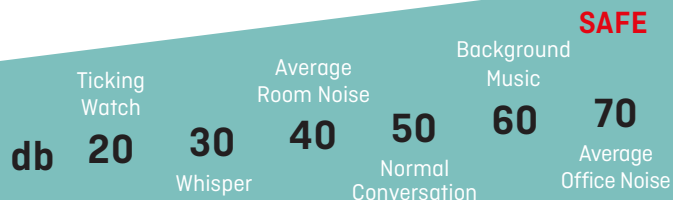


With the acoustic app from **athmer**, you can test at home the intensity with which your sound sources penetrate through closed doors.

DOWNLOAD IT FROM THE APP STORE :



athmer SchallApp



guide & glossary

NOTE: our products are covered by an Environmental Product Declaration (EPD) in accordance with European standards, EN ISO 14025 and EN 15804. The EPD is further evidence of our wider commitment to sustainability and permits our product to be used in certified Green Buildings throughout the world.



Key to product names :

example : **Schall-Ex® L-15/30 WS**

Schall-Ex® = product line (Rainstop, Stadi, Ultra, Jumbo)

L = seal travel (L—long, M—medium), **LD**— delayed drop

15/30 = groove width in mm / groove height in mm

WS = mounting type (WS—end brackets, EK—end caps, FS—surface-mounted) also available OS—omega profile, TS—T-shaped profile)

Key to feature icons :



for zero-threshold, accesible, universal design openings



sound isolation, increases the STC rating of the door assembly



air permeability, keep the cold or warm on the right side of the door



smoke protection, Certifire TS21 (CF 5675)



fire-rated, many of the athmer seals are UL Listed



corrosion resistant, anodized profiles and stainless steel springs



weatherproof, resists wind-driven rain

Drop seal terms :

ACTUATOR

Drop seal component that protrudes from one or both sides of a door and is compressed by contact with the door frame. Upon compression it activates the inner rail and sealing profile, pushing them towards the floor.

PARALLEL ACTUATION

An athmer technology incorporated in selected drop seals that drops the sealing profile evenly on both sides of the door. Parallel actuation prevents seal dragging and supports long-term durability.

OVERLOAD PROTECTION

An athmer technology present in selected drop seals that automatically detects when the sealing profile has dropped far enough and cuts off further actuation pressure. Overload protection ensures a consistent, even seal and protects the seal's components from excessive pressure.

INNER RAIL

Drop seal component used to hold the sealing profile typically made from aluminium. It is contained within the main outer housing and drops to the floor during seal actuation.

DELAYED DROP

An athmer technology available with the Stadi line of drop seals that delays actuation of the seal after the door closes to allow air flow. A delay in actuation will prevent pressure changes from affecting the door operation. This feature is particularly useful in positive-pressure environments, a growing application in hospitals and biosafety labs.

we are ready to help.

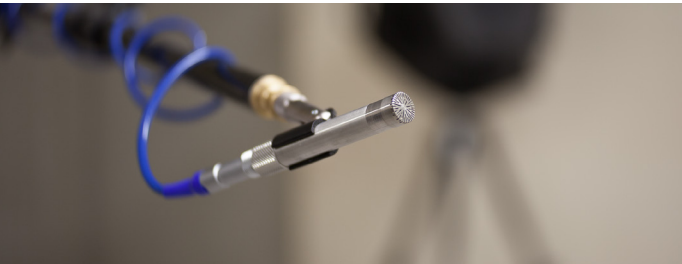
USING DROP SEALS IN YOUR DOORS IS A SOUND DECISION



WE CAN HELP YOU WITH A SOLUTION THAT FITS PERFECTLY



WE LOOK FORWARD TO HEARING FROM YOU



What is a door?

It is a separation between two spaces that, once opened, allows whatever you wish to pass from one side to the other. Once closed, only if the door has a proper seal can it become the total barrier it was intended to be. With an **athmer** drop seal, you can be sure that the door is performing this role in the most complete and effective way possible.

No seal, no door.