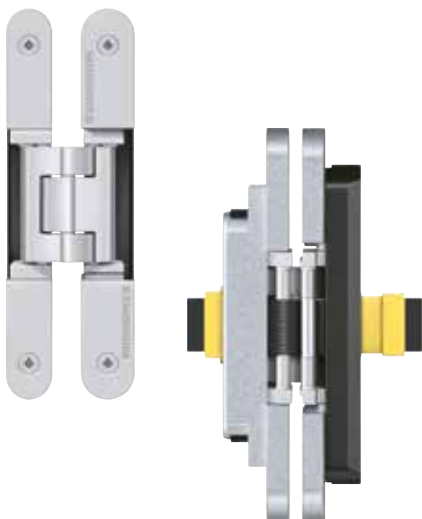


## TECTUS

### TE 240 3D Energy Kit

With integrated and continuous energy transfer for flush residential doors



<b>Hinge</b>	<b>energy transfer</b>	<b>up to 60 kg (132 lbs.)</b>
--------------	------------------------	-------------------------------

#### Product Features

- Multiple connection adapter options
- Completely concealed hinge system
- For wood, steel or aluminum door panels and frames
- Easily adjustable in three dimensions (side +/- 3.0 mm (0.118"), height +/- 3.0 mm (0.118"), compression +/- 1.0 mm (0.039"))
- Maintenance-free slide bearings
- Finger protection due to a small gap between door and frame

The specification text can be downloaded from the PRODUCTSELECTOR at [www.simonswerk-usa.com](http://www.simonswerk-usa.com).

#### Technical Data

Load capacity	60 kg (132 lbs.)
Length	155 mm (6.102")
Width (door)	18 mm (0.709")
Width (frame)	21 mm (0.827")
Router bit/collar Ø	1/2" / 1"
No. of wires/Wire cross section	16/0.14 mm <sup>2</sup>
Max. voltage	50 V (for voltages of 24 V or higher only with safeguarded power supply)
Max. current	0.8 A (per wire)

#### Finishes

satin chrome look (F1) (124), stainless steel look (SSL) (126), other finishes available upon request

#### Combinations

Receiver/Reinforcement	Commercial frame	Frame mounted
	Casing frame	TE 240 3D FZ
	Steel frame	TE 240 3D SZ
	Steel door	TE 240 3D ST
	Aluminum frame	Specified by manufacturer

Accessories	Round Cable 10m (393.701")
	Custom Adapter

#### Installation Tools (in addition to templates for standard versions)

Routing for raceway	routing template	No. 5 251081 5
---------------------	------------------	----------------

#### Note

The load capacity mentioned above refers to the use of 2 hinges per door leaf with a height/width ratio of 2:1 (see page 46 for further detail).  
 For a minimum door panel thickness of 26 mm (1.024").  
 Kit includes two 3 m (118.110") round cables.

