

Push your dropseal performance up to the next level.



Nine Great Solutions for Interior & Exterior Doors

BW —  **Planet**

High-Performance Dropseal Solutions



NOTE : Planet has a full suite of dropseals for metal doors as well.



Planet X3



Planet HS-Plus



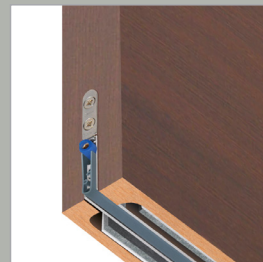
Planet KT



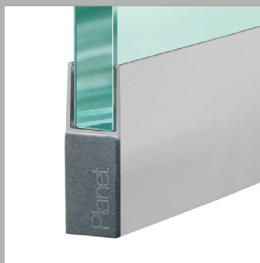
Planet US



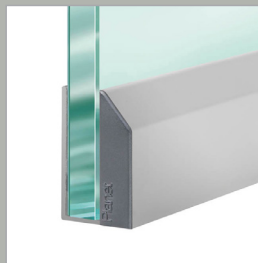
Planet SN



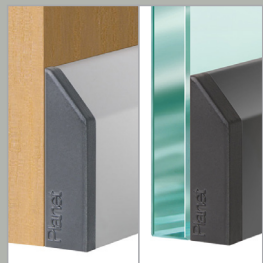
Planet MinE



Planet KG-F Narrow



Planet KG-A Narrow



Planet KG-S Narrow

B ——— W

available in North America through Bridgeport Worldwide and its dealers

T : +1-800-362-1484 — planetinfo@BridgeportWorldwide.com



Planet X3



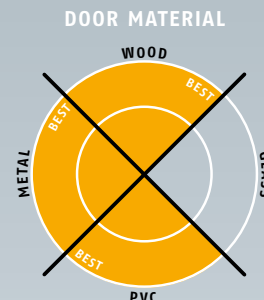
Heavy-Duty Zero-Threshold Solution

B ——— W

available in North America through Bridgeport Worldwide and its dealers

T : +1-800-362-1484 — planetinfo@BridgeportWorldwide.com

Planet X3 → 22 x 30 mm | ↓ 5 – 12 mm | ↔ 2 – 6 mm | 7A/9A | ≤ 52 dB



Main features

- **New: unilateral hinge-side release!**
- Keeps out driving rain (7A/9A, ift certified), for entrance doors and balcony doors
- **No drainage channel** required
- 3 simultaneous sealing movements: downwards, to the left and to the right, separately adjustable
- Seal height ↓ 5 – 12 mm, lateral movement ↔ 2 – 6 mm
- Acoustic insulation up to ≤ 52 dB in case of an optimal sealing
- High-grade silicone lip
- From 68 mm door thickness
- Can be shortened up to the next shorter length on stock with Planet set for shortening X3
- Simplified short process, now with push-fit without adhesive
- 2 years warranty

Versions / options

- Planet X3 → RD ≤ 52 dB, smoke-shielding, trimmable, unilateral release
- Planet X3 → RD ≤ 52 dB, smoke-shielding, made to measure, ready for installation, unilateral release
- Special versions on request

Required accessories

- Assembly set X3 (including)
- Corner plate set X3

Door types with Planet X3



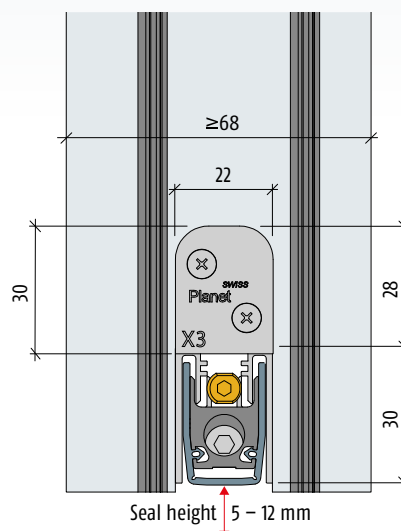
Single doors – hinged

More functions



Technische Daten

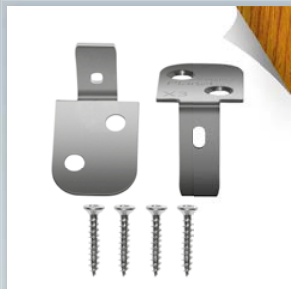
Profile material	aluminum, → 22 x 30 mm
Groove size	↗ 22,5 mm wide and 30 to 32 mm deep
Seal profile	high-grade silicone
Seal height	↓ 5 – 12 mm
Lateral movement	↔ 2 – 6 mm
Driving rain	7A / 9A, 300 Pa, classification to DIN EN 12208 test method to DIN EN 1027
Sound absorption value	up to ≤ 52 dB at 7 mm space to the floor
Lift height adjustment	on the release knob with a 3 mm Allen key
Lateral movement	at the face using 4 mm Allen key
Lengths in stock	960, 1085, 1210, 1335, 1460 mm
Special lengths	on request
Release	unilaterally on hinge side
Can be shortened	max. 125 mm
Fastening	laterally, with stainless steel fastening angles and screws
Test approvals	on request



B ——— W

available in North America through Bridgeport Worldwide and its dealers
T +1-800-362-1484 — planet.info@BridgeportWorldwide.com

Planet
ASSA ABLOY



Planet assembly set X3 for wooden doors (standard)



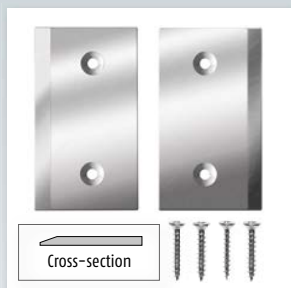
Planet assembly set X3 for metal doors (option)



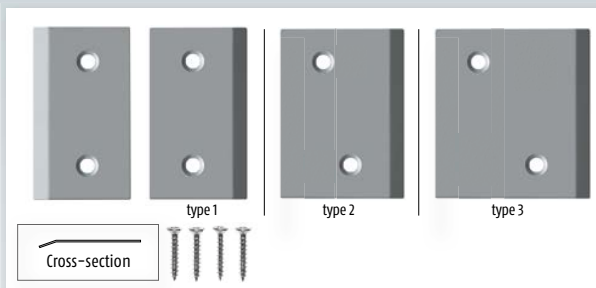
Set for shortening X3, (standard) new with quick push-fit system



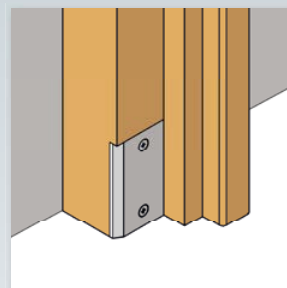
Planet cut assistance X3 (option) for simple cutting of the silicone lip



Planet corner plate set X3, aluminum, with inclined contact surface (required)

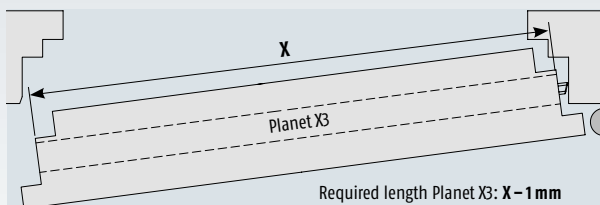


Planet corner plate set X3, sheet met. (stainless steel), with inclined contact surface, type 1: 29x55 mm, type 2: 39x55 mm, type 3: 49x55 mm (option)



Installing example corner plate set X3, aluminum, installed on frame

Order specifications



Planet X3 → RD ≤ 52 dB trimmable, unilateral release
incl. Planet set for shortening X3 and assembly set X3 for wooden doors

Version trimmable → Seal must be assembled!	960 mm	>835 mm	Prod. code 206096
	1085 mm	>960 mm	Prod. code 206109
	1210 mm	>1085 mm	Prod. code 206121
	1335 mm	>1210 mm	Prod. code 206134
	1460 mm	>1335 mm	Prod. code 206146

PPlanet X3 → RD ≤ 52 dB, made to measure, ready for installation, unilateral release, incl. Planet assembly set X3 for wooden doors

Version made to measure → Drop-down seal is ready for installation	960–835 mm	Prod. code 209096
	1085–961 mm	Prod. code 209109
	1210–1086 mm	Prod. code 209121
	1335–1211 mm	Prod. code 209134
	1460–1336 mm	Prod. code 209146

Note: Planet X3 with two-sided release is still available on request.

Accessories | Options

Planet assembly set X3 for wooden doors incl. 2 fastening brackets (stainless), 4 screws	Prod. code 900096
Planet assembly set X3 for metal doors incl. 2 fastening brackets (stainless), 4 screws	Prod. code 900097
Planet corner plate set X3, alum. (width 29 mm)	Prod. code 900136
Planet corner plate set X3, sheet metal (stainless steel), type 1; width 29 mm	Prod. code 900137
Planet corner plate set X3, sheet metal (stainless steel), type 2; width 39 mm	Prod. code 900954
Planet corner plate set X3, sheet metal (stainless steel), type 3; width 49 mm	Prod. code 900955
Planet set for shortening X3	Prod. code 902110
Planet cut assistance X3	Prod. code 900930
Planet F click-threshold	see page 178 – 185
Gutmann WESER ZERO threshold	see page 186 – 187
Maco threshold-lock for french window	see page 162

Advertising text

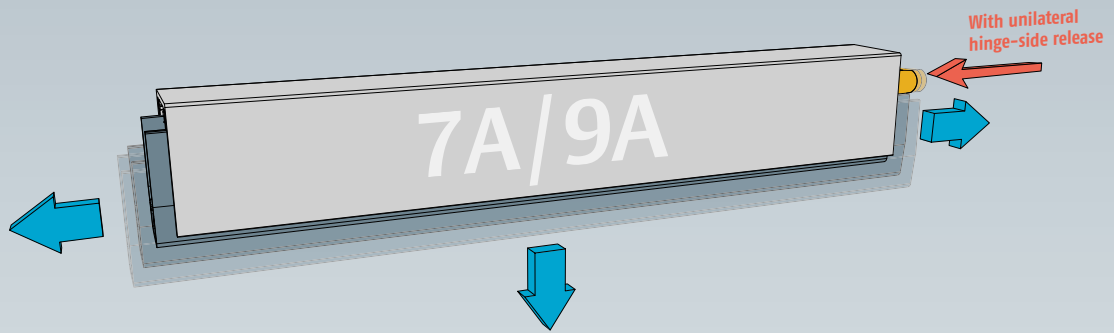


Planet X3 → RD (smoke-shielding) ≤ 52 dB, unilateral release

Automatic door drop-down seal **Planet X3 → RD ≤ 52 dB**, against driving rain (7A/9A, ift certified) for sound protection-, smoke-shielding doors. Unilateral hinge-side release, 3 sealing movements: Seal can be adjusted to the left, downwards and to the right, seal height ↓ **5 – 12 mm**, side stroke adjustment ↔ **2 – 6 mm**, flush for grooving or 2 mm deeper with lip protection. Silicone lip, lateral fastening. Aluminium profile → **22x30 mm**.

Principle of function

Planet X3

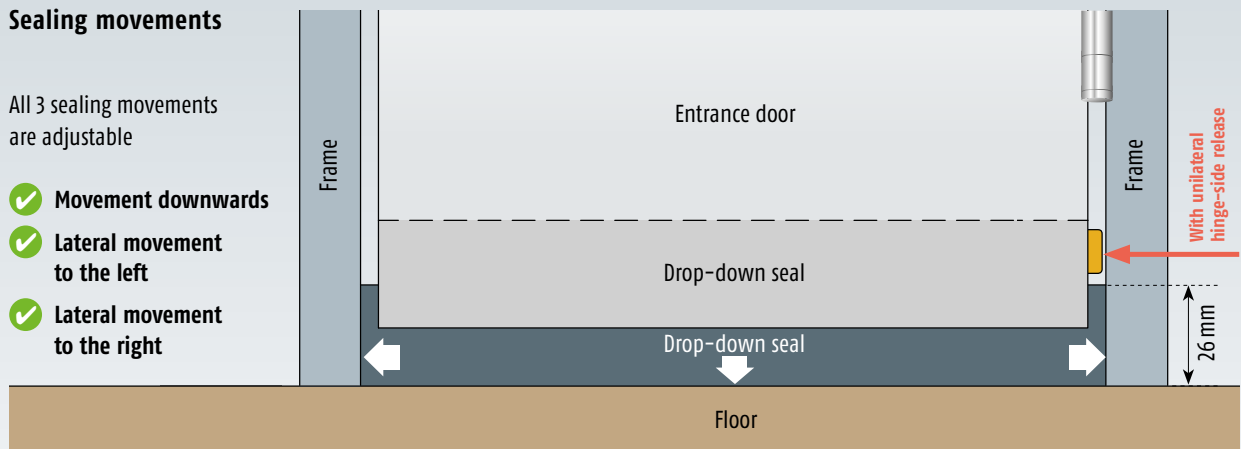


- ✓ 3 simultaneous sealing movements
- ✓ Only 1 actuation button
- ✓ 2 lateral lift settings

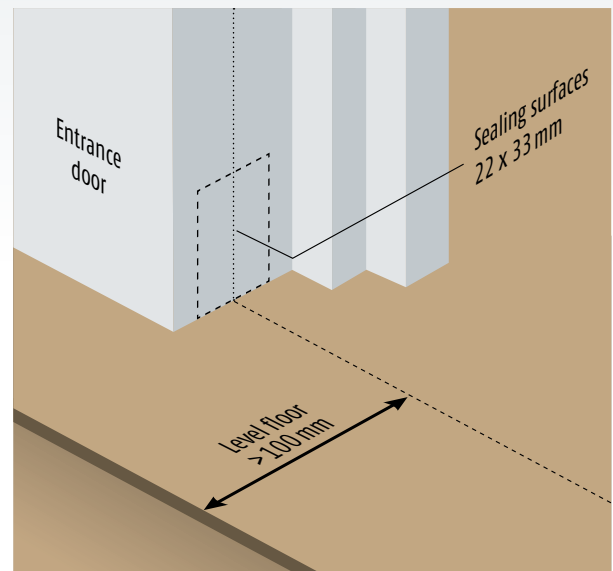
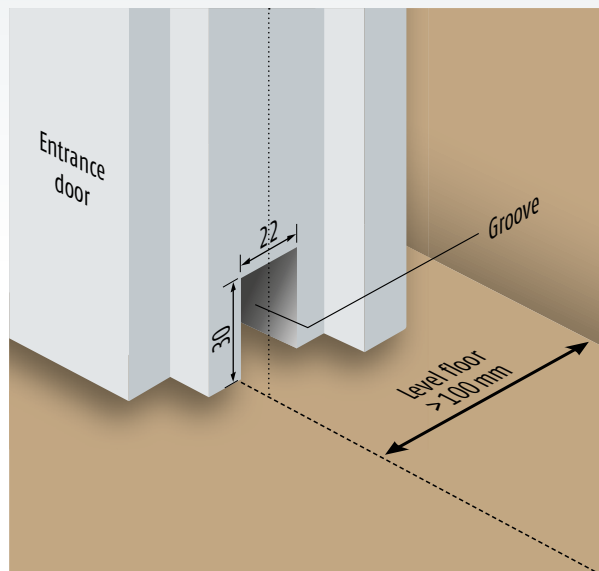
Sealing movements

All 3 sealing movements are adjustable

- ✓ Movement downwards
- ✓ Lateral movement to the left
- ✓ Lateral movement to the right



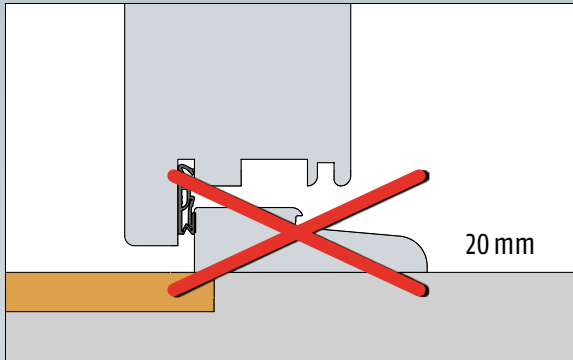
Preparation



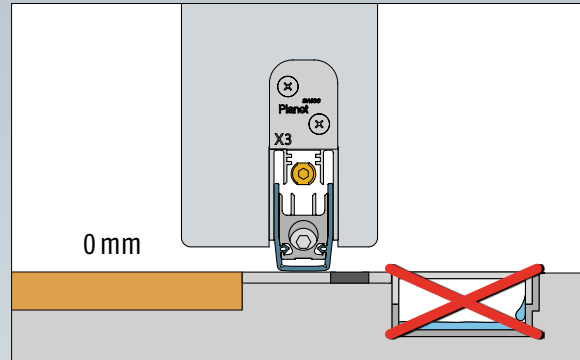
- ✓ Groove in entrance door 22 x 30 mm
- ✓ 2 sealing surfaces on frame
- ✓ Level floor

Advantages

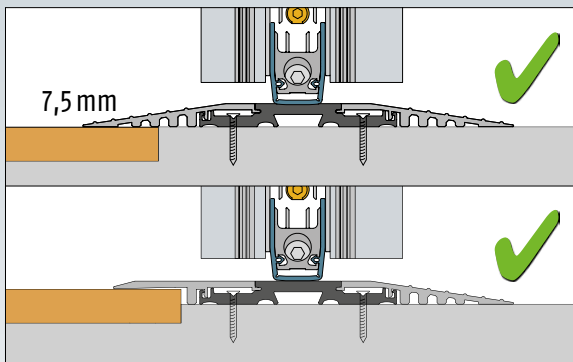
Planet X3



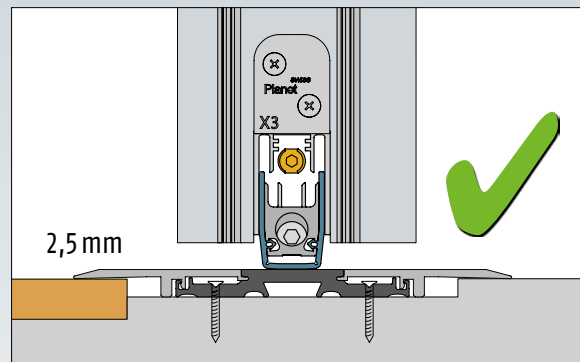
No step to trip over



7A certified, no drainage required, economical

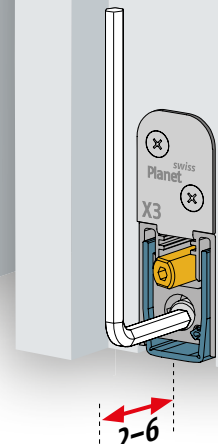
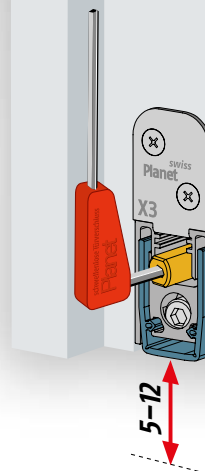


Easy to retrofit: Planet F140 click-threshold (above) or Planet F130 click-threshold for levelling (below)



Planet F120 click-threshold – extremely flat, for renovation and new buildings

- ✓ Simple initial adjustment
- ✓ Fits all floor grooves of 5 – 12 mm
- ✓ Adjustable lateral movement: 2 – 6 mm
- ✓ Fits all door rebates
- ✓ Quick readjustment
- ✓ Easily trimmable, no gluing necessary





Planet HS-Plus



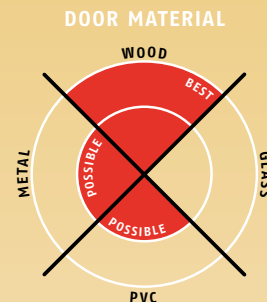
The Best All-Around Solution

B ——— W

available in North America through Bridgeport Worldwide and its dealers

T : +1-800-362-1484 — planetinfo@[BridgeportWorldwide.com](mailto:planetinfo@BridgeportWorldwide.com)

Planet HS-plus → 13 x 30 mm | ↓ 22 mm | ≤ ≥55 dB



Main features

- Seal height up to ↓ 22 mm
- Acoustic insulation of ≤ ≥55 dB in case of an optimal sealing
- Protected silicone lips since deeper embedded
- Door can be adapted on bottom without removal
- Unilateral and soundless release, silent seal
- Due to parallel drop-down no trailing on the floor
- Automatic compensation at inclined floors
- For double leaf folding doors with flush bolt or driving bar
- High-grade silicone lip, simple lift height adjustment
- Can be shortened up to the next shorter length on stock
- No extra need to cut off silicone at both ends
- 7 years warranty

Versions / options

- Planet HS-plus → FH+RD ≤ ≥55 dB, fire-retardant + smoke-shielding
- Option Double-shortening → refer to chapter Accessories | TR125
- Special versions on request

Door types with Planet HS-plus



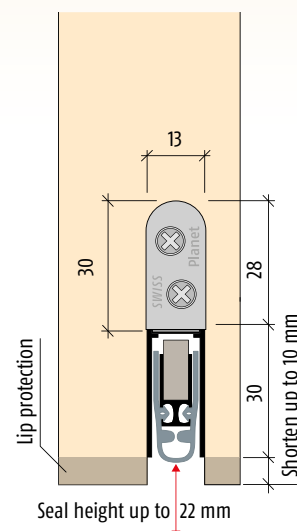
Double leaf doors → refer to chapter Accessories | Flush bolt, drilling

More functions



Technical specifications

Profile material	aluminum, → 13 x 30 mm
Groove size	width 13,1 mm with depth 30,5 up to 40 mm
Seal profile	high-grade silicone or high-grade self-extinguishing silicone
Seal height	up to ↓ 22 mm
Sound absorption value	up to ≤ ≥55 dB at 7 mm space to the floor; up to ≤ 51 dB at 14 mm space to the floor
Lift height adjustment	on the release knob with an Allen key 3 mm
Lengths in stock	335, 460, 585, 710, 835, 960, 1085, 1210, 1335, 1460 mm
Special lengths	on request up to 6000 mm for wing- and sliding doors
Release	unilaterally on hinge side
Can be shortened	up to the maximum of 125 mm (335 mm only 115 mm)
Fastening	on the side with stainless steel angle brackets and screws
Frame protector plate	stainless, hammer fixed, 20 x 20 mm
Test approvals	on request



B — W

available in North America through Bridgeport Worldwide and its dealers
T +1-800-362-1484 — planet.info@BridgeportWorldwide.com

Planet swiss



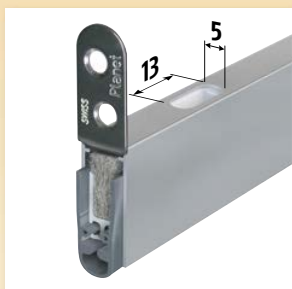
Profile Planet HS-plus



Planet HS-plus with fastening brackets, release knob



Planet assembly set HS



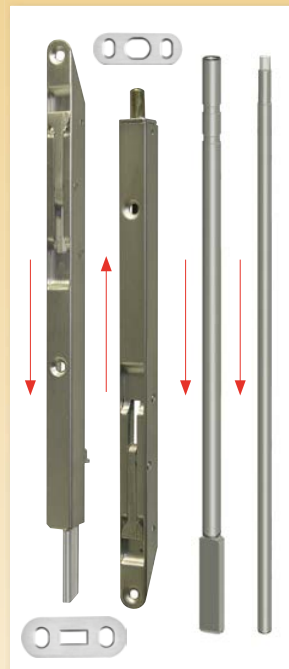
Option: Planet HS-plus with Planet drill hole $\varnothing 5 \times 13$ mm for flush bolt, driving bar rods → refer to chapter Accessories | driving bar rods



Option: Planet HS-plus with Planet drill hole $\varnothing 5 \times 13$ mm and driving bar rod → refer to chapter Accessories | driving bar rods



Option: Planet HS-plus with Planet drill hole $\varnothing 8$ mm for driving bar rods → refer to chapter Accessories | driving bar rods



Accessories: Planet KR flush bolt, incl. strike plate → refer to chapter Accessories | Flush bolt
Driving bar rods flattened → see pages 151 – 161

Order specifications

Planet HS-plus-SD → FH+RD ≤ 55 dB
incl. assembly set HS

Prod. code 77xxx-SD*

* xxx = refer to price list for profile length

Accessories | Options

Planet assembly set HS incl. 2 fastening brackets (stainless), 4 screws and frame protector plate, type 1 (stainless)	Prod. code 900180
Planet frame protector plate type 1 (stainless); possible type 2/3/4/5 → refer to chapter Accessories Options	Prod. code 900014
Cut the Planet to fix dimension	Prod. code 900200
Planet drill hole $\varnothing 8$ mm	Prod. code 900866
Planet drill hole $\varnothing 5 \times 13$ mm including plastic guide, for Planet KR and driving bar rods flattened → refer to chapter Accessories Flush bolt, drilling	Prod. code 900190
Planet BM floor strikes → refer to chapter Accessories BM	Prod. code 90034x-x Prod. code 90027x-x

x-x = Several Planet Floor strikes available in different adjustment range
refer to chapter Accessories | BM

Advertising text



Planet HS-plus → FH+RD (fire-retardant + smoke-shielding) ≤ 55 dB

Automatic door drop-down seal **Planet HS-plus** → FH+RD ≤ 55 dB, for sound protection-, smoke-shielding and fire-retardant doors, release on hinge side with automatic compensation in case of an inclined floor, parallel drop-down, seal height up to $\downarrow 22$ mm, flush or deeper to put in groove with lip protection. Lateral fastening, self-extinguishing silicone lip. Aluminum profile → **13 x 30 mm**.



Planet KT



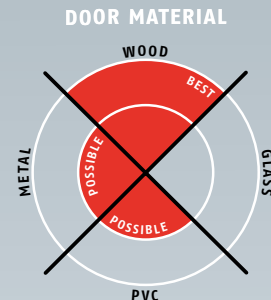
Lower Profile for Tighter Undercuts

B — W

available in North America through Bridgeport Worldwide and its dealers

T : +1-800-362-1484 — planetinfo@BridgeportWorldwide.com

Planet KT → 13 x 25 mm | ↓ 18 mm | ≤ 48 dB



Main features

- Seal height up to ↓ 18 mm
- Acoustic insulation up to ≤ 48 dB in case of an optimal sealing
- Protected silicone lips since deeper embedded
- Unilateral and soundless release, silent seal
- Due to parallel drop-down no trailing on the floor
- Automatic compensation at inclined floors
- For double-wing folding doors with flush bolt or driving bar
- High-grade silicone lip, simple lift height adjustment
- Can be shortened up to the next shorter length on stock
- No extra need to cut off silicone at both ends
- 7 years warranty

Versions / options

- Planet KT → RD ≤ 48 dB, smoke-shielding
- Planet KT → FH+RD ≤ 48 dB, fire-retardant + smoke-shielding
- Option bevel lip ≤ 44 dB, up to ↓ 22 mm, for uneven floors
- **NEW** Option Planet KT-plus ≤ 54 dB for best sound protection
- Special executions on request

Door types with Planet KT



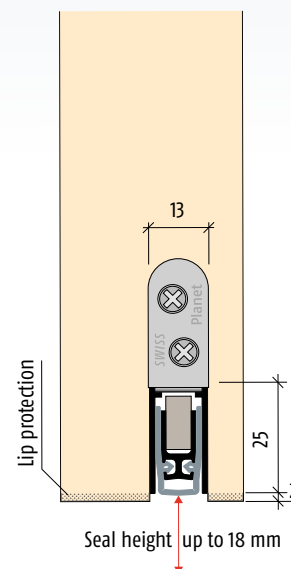
Double-wing doors → refer to chapter Accessories | Flush bolt, drilling

More functions



Technical specifications

Profile material	aluminum, → 13 x 25 mm
Groove size	□ width 13,1 mm with depth 25,5 up to 35 mm
Seal profile	high-grade silicone or high-grade self-extinguishing silicone
Seal height	up to ↓ 18 mm
Sound absorption value	up to ≤ 48 dB at 7 mm space to the floor; up to ≤ 44 dB at 14 mm space to the floor
Lift height adjustment	on the release knob with an Allen key 3 mm
Lengths in stock	335, 460, 585, 710, 835, 960, 1085, 1210, 1335, 1460 mm
Special lengths	on request up to 6000 mm
Release	unilaterally on hinge side
Can be shortened	up to the maximum of 125 mm (335 mm only 115 mm)
Fastening	on the side with stainless steel angle brackets and screws
Frame protector plate	stainless, hammer fixed, 20 x 20 mm
Test approvals	on request



B ——— W

available in North America through Bridgeport Worldwide and its dealers
T +1-800-362-1484 — planet.info@BridgeportWorldwide.com

Planet swiss



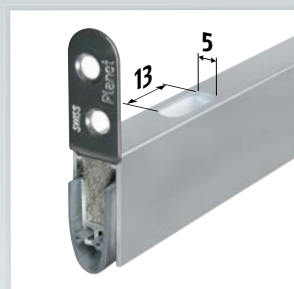
Option: Planet KT-plus for best sound protection



Option: Planet KT with bevel lip for uneven floors



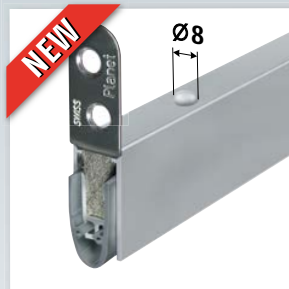
Planet assembly set HS for Planet KT



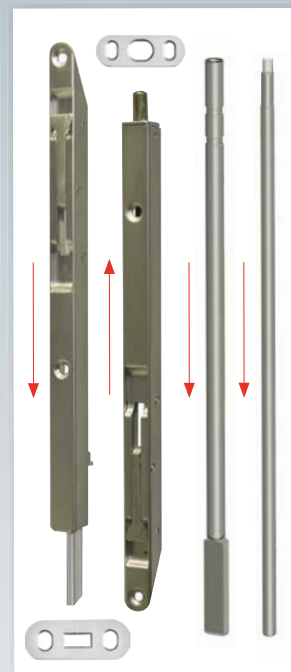
Option: Planet KT with Planet drill hole $\varnothing 5 \times 13$ mm for flush bolt, driving bar rods → refer to chapter Accessories | driving bar rods



Option: Planet KT with Planet drill hole $\varnothing 5 \times 13$ mm and driving bar rod → refer to chapter Accessories | driving bar rods



Option: Planet KT with Planet drill hole $\varnothing 8$ mm for driving bar rods → refer to chapter Accessories | driving bar rods



Accessories: Planet KR flush bolt, incl. strike plate → refer to chapter Accessories | Flush bolt
Driving bar rods flattened → see pages 151 – 161

Order specifications

Planet KT → RD ≤ 48 dB incl. assembly set HS for Planet KT	Prod. code 30xxx*
Planet KT → FH+RD ≤ 48 dB incl. assembly set HS for Planet KT	Prod. code 31xxx*

* xxx = refer to price list for profile length

Accessories | Options

Planet KT-plus ≤ 54 dB for best sound protection	refer to price list, options / supplements
Bevel lip (≤ 44 dB, up to $\downarrow 22$ mm) DIN L or DIN R	refer to price list, options / supplements
Planet assembly set HS for Planet KT incl. 2 fastening brackets (stainless), 4 screws and frame protector plate, type 1 (stainless)	Prod. code 900180

Planet frame protector plate type 1 (stainless); possible type 2 / 3 / 4 / 5 → refer to chapter Accessories Options	Prod. code 900014
Cut the Planet to fix dimension	Prod. code 900200
Planet drill hole $\varnothing 8$ mm	Prod. code 900866
Planet drill hole $\varnothing 5 \times 13$ mm including plastic guide, for Planet KR and driving bar rods flattened → refer to chapter Accessories Flush bolt, drilling	Prod. code 900190
Planet BM floor strikes → refer to chapter Accessories BM	Prod. code 90034x-x Prod. code 90027x-x

x-x = Several Planet floor strikes available in different adjustment range
refer to chapter Accessories | BM

Advertising text



Planet KT → RD (smoke-shielding) ≤ 48 dB

Automatic door drop-down seal **Planet KT → RD** ≤ 48 dB, for sound absorption and smoke-shielding doors, release on hinge side with automatic compensation in case of an inclined floor, parallel drop-down, seal height up to $\downarrow 18$ mm, flush or deeper to put in groove with lip protection. Silicone lip, lateral fastening. Aluminum profile → **13 x 25 mm**.

Advertising text



Planet KT → FH+RD (fire-retardant + smoke-shielding) ≤ 48 dB

Automatic door drop-down seal **Planet KT → FH+RD** ≤ 48 dB, for sound protection-, smoke-shielding and fire-retardant doors, release on hinge side with automatic compensation in case of an inclined floor, parallel drop-down, seal height up to $\downarrow 18$ mm, flush or deeper to put in groove with lip protection. Lateral fastening, self-extinguishing silicone lip. Aluminum profile → **13 x 25 mm**.



Planet US



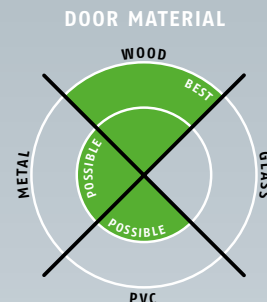
The Thinnest Drop Seal on the Planet

B — W

available in North America through Bridgeport Worldwide and its dealers

T : +1-800-362-1484 — planetinfo@BridgeportWorldwide.com

Planet US → 8 x 30 mm | ↓ 20 mm | ≤ 48 dB



Main features

- Especially for **narrow** doors
- Seal height up to **↓ 20 mm**
- Acoustic insulation up to **≤ 48 dB** in case of an optimal sealing
- Protected silicone lips since deeper embedded
- Door can be adapted on bottom without removal
- Unilateral and soundless release, silent seal
- Due to parallel drop-down no trailing on the floor
- Automatic compensation at inclined floors
- For single and Double leaf doors
(seal next to flush bolt / driving bar rod)
- High-grade silicone lip, simple lift height adjustment
- Can be shortened up to the next shorter length on stock
- No extra need to cut off silicone at both ends
- 7 years warranty



Versions / options

- Planet US → **RD** ≤ 48 dB, smoke-shielding
- Planet US → **FH+RD** ≤ 48 dB, fire-retardant + smoke-shielding
- Option **sliding door** ≤ 48 dB
- Option **bevel lip** ≤ 48 dB, up to **↓ 24 mm**, for uneven floors
- Special versions on request

Door types with Planet US

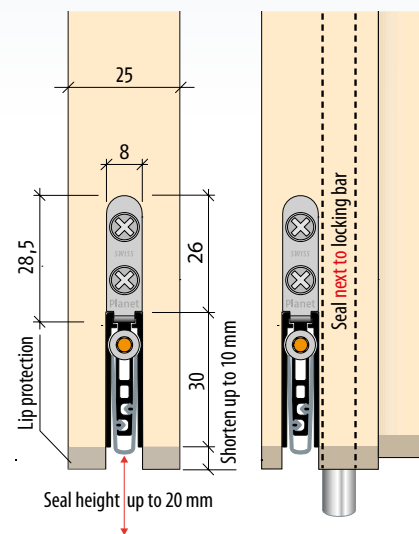


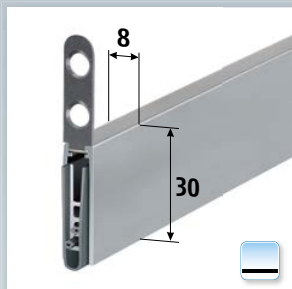
More functions



Technical specifications

Profile material	aluminum, → 8 x 30 mm
Groove size	width 8,1 mm with depth 30,5 up to 40 mm
Seal profile	high-grade silicone or high-grade self-extinguishing silicone
Seal height	up to ↓ 20 mm
Sound absorption value	up to ≤ 48 dB at 7 mm space to the floor
Lift height adjustment	on the release knob with an Allen key 3 mm
Lengths in stock	460, 585, 710, 835, 960, 1085, 1210, 1335, 1460, 1585 mm
Special lengths	on request up to 6000 mm for wing- and sliding doors
Release	unilaterally on hinge side
Can be shortened	up to the maximum of 125 mm
Fastening	on the side with stainless steel angle brackets and screws
Frame protector plate	stainless, hammer fixed, 20 x 20 mm
Test approvals	on request





Profile Planet US with fastening brackets for wood



Planet US with fastening brackets for wood, release side



Option: Planet US with fastening brackets for wood, bevel lip



Planet assembly set TW/US for wooden doors (standard)



Option: profile Planet US with fastening brackets for metal



Option: Planet US with fastening brackets for metal, release side



Option: Planet US with fastening brackets for metal, bevel lip for uneven floors



Option: Planet assembly set TW/US for metal doors

Order specifications

Planet US → RD ≤ 48 dB incl. Planet assembly set TW/US	Prod. code 23xxx*
Planet US → FH+RD ≤ 48 dB incl. Planet assembly set TW/US	Prod. code 24xxx*

* xxx = refer to price list for profile length

Accessories | Options

Sliding door	Prod. code 900908
Planet assembly set TW/US for wood incl. 2 fastening brackets (stainless), 4 screws and frame protector plate, type 1 (stainless)	Prod. code 900669
Planet assembly set TW/US for metal incl. 2 fastening brackets (stainless), 4 screws and frame protector plate, type 1 (stainless)	Prod. code 900671
Planet frame protector plate type 1 (stainless); possible type 2/3/4/5 → refer to chapter Accessories Options	Prod. code 900014
Cut the Planet to fix dimension	Prod. code 900200
Bevel lip (≤ 48 dB, up to ↓ 24 mm) DIN L or DIN R	refer to price list, options / supplements

Advertising text



Planet US → RD (smoke-shielding) ≤ 48 dB

Automatic door drop-down seal **Planet US → RD** ≤ 48 dB, for sound absorption and smoke-shielding doors, release on hinge side with automatic compensation in case of an inclined floor, parallel drop-down, seal height up to ↓ 20 mm, flush or deeper to put in groove with lip protection. Lateral fastening, lip from silicone. Aluminum profile → 8 x 30 mm.

Advertising text



Planet US → FH+RD (fire-retardant + smoke-shielding) ≤ 48 dB

Automatic door drop-down seal **Planet US → FH+RD** ≤ 48 dB, for sound protection-, smoke-shielding and fire-retardant doors, release on hinge side with automatic compensation in case of an inclined floor, parallel drop-down, seal height up to ↓ 20 mm, flush or deeper to put in groove with lip protection. Lateral fastening, self-extinguishing silicone lip. Aluminum profile → 8 x 30 mm.



Planet SN



The Zero-Force Activation for Sliding Doors

B — W

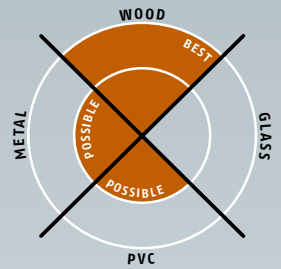
available in North America through Bridgeport Worldwide and its dealers

T : +1-800-362-1484 — planetinfo@BridgeportWorldwide.com

Planet SN (sliding door) → 22 x 30 mm | ↓ 7-16 mm | ≤ 44 dB



DOOR MATERIAL



Main features

- Planet SN for sliding doors
- No lock needed because of **zero-force release**
- Seal height ↓ **7-16 mm**
- Floor guide SN kit – versions short (standard) and long (as option) – **for door gap 7-10 / 10-13 / 13-16 mm**
- Release force only **1 N/m**
- Release through floor guide with parallel drop-down
- Compact space-saving solution with integrated floor guiding groove
- Automatic compensation at inclined floors
- Acoustic insulation up to ≤ **44 dB** in case of an optimal sealing (at an air-gap of 7 mm)
- High-grade silicone lip
- Can be shortened up to the next shorter length on stock
- Seal easily removed by detaching end brackets
- 7 years warranty

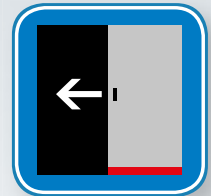
Versions / options

- Planet SN → RD ≤ **44 dB**, smoke-shielding
- Closing **DIN L** or **DIN R**
- Special versions on request

Door types with Planet SN

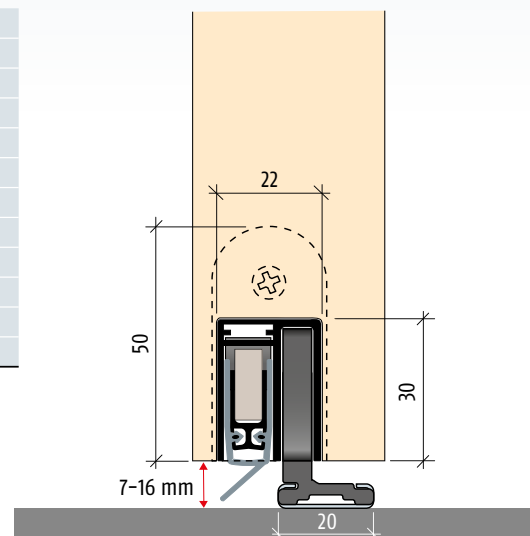


More functions



Technical specifications

Profile material	aluminum, → 22 x 30 mm
Groove size	width 22,1 mm with depth 30,5 up to 35 mm
Seal profile	high-grade silicon
Seal height	↓ 7-16 mm
Floor guides	incl. 3 pcs. for door gap 7-10 / 10-13 / 13-16 mm
Sound absorption value	up to ≤ 44 dB at 7 mm space to the floor
Lengths in stock	800, 925, 1050, 1175, 1300, 1425, 1550, 1675 mm
Special lengths	on request up to 6000 mm
Release	integrated in the floor guide → invisible
Can be shortened	125 mm (+ 45 mm max. at gearing side)
Fastening	laterally with stainless steel angle brackets
Test approvals	on request



B — W

available in North America through Bridgeport Worldwide and its dealers

T +1-800-362-1484 — planet.info@BridgeportWorldwide.com

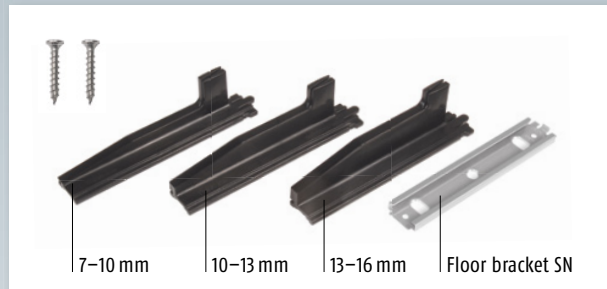
Planet
ASSA ABLOY



Planet SN profile with floor guide



Planet assembly set SN



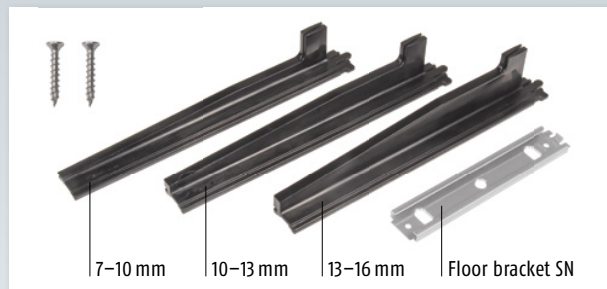
Floor guide SN kit short (standard) including 3 ramped guides SN for door gap 7-16 mm and floor bracket SN for screwing



Planet SN installed



Planet SN installed with floor guide SN



Floor guide SN kit long (option) including 3 ramped guides SN long for door gap 7-16 mm and floor bracket SN for screwing

Order specifications

Planet SN → RD ≤ 44 dB

incl. Planet assembly Set SN and floor guide SN kit, short for door gap 7-16 mm

Prod. code 105xxx L | R*

Closing DIN L or DIN R → refer to illustration on the right

* xxx = refer to price list for profile length

Accessories | Options

Planet floor guide SN kit, short, DIN R for door gap 7-10 / 10-13 / 13-16 mm (standard)

Prod. code 902035

Planet floor guide SN kit, short, DIN L for door gap 7-10 / 10-13 / 13-16 mm (standard)

Prod. code 902036

Planet floor guide SN kit, long, DIN R for door gap 7-10 / 10-13 / 13-16 mm (option)

Prod. code 902037

Planet floor guide SN kit, long, DIN L for door gap 7-10 / 10-13 / 13-16 mm (option)

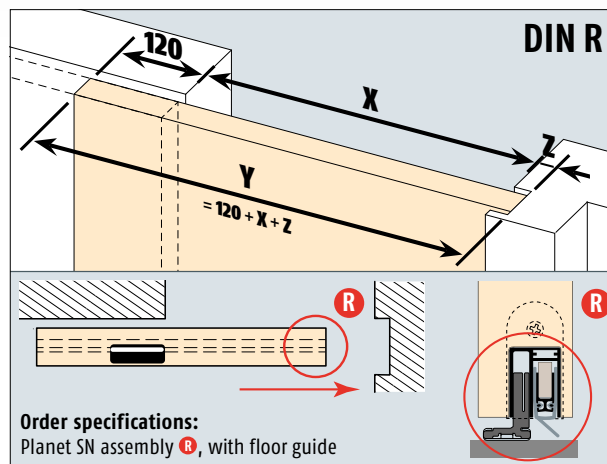
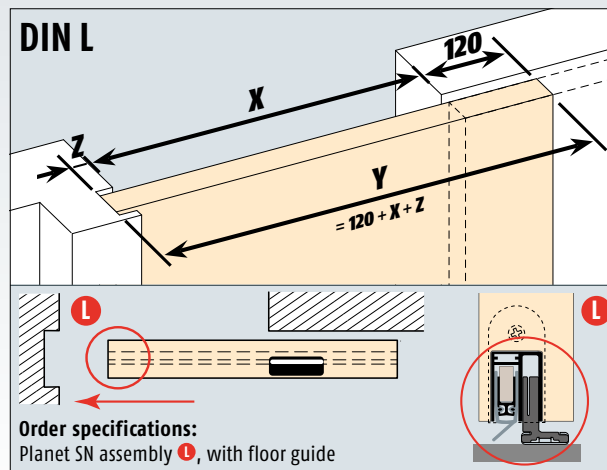
Prod. code 902038

Planet assembly Set SN for wood, DIN R

Prod. code 902033

Planet assembly Set SN for wood, DIN L

Prod. code 902034



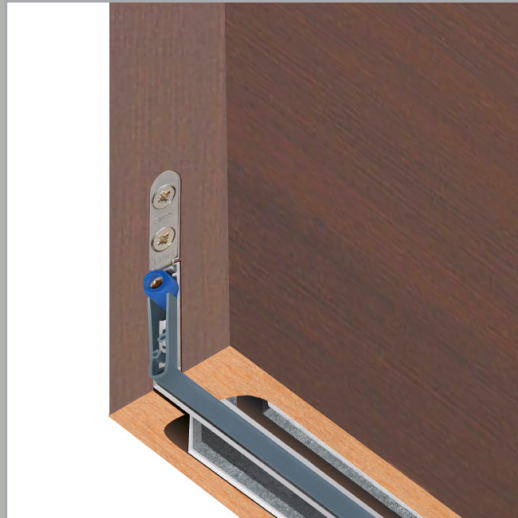
Advertising text

Planet SN → RD (smoke-shielding) ≤ 44 dB

Automatic door drop-down seal Planet SN → RD ≤ 44 dB, for sound absorption and smoke-shielding sliding doors, release through floor guide with parallel drop-down, seal height 7-10 / 10-13 / 13-16 mm, flush to put in groove. Silicone lip, lateral fastening incl. floor guide. Aluminum profile → 22 x 30 mm.



Planet MinE



The Breathable Acoustic Drop Seal

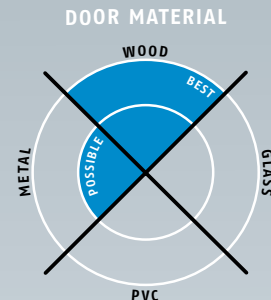
B — W

available in North America through Bridgeport Worldwide and its dealers

T : +1-800-362-1484 — planetinfo@BridgeportWorldwide.com

Planet MinE-F / S (F=rebated doors/S=soundproof)

→ 8 x 30 mm / 25 x 43 mm | ↓ 20 mm | ≤ 27 dB



Main features

- Especially for passive building and low energy houses
- Suitable for rebated doors
- Closed rooms with Ventilation systems / toilet / bathroom
- Air circulation / air equalization
- Seal height up to ↓ 20 mm
- Sound absorption on seam ≤ 27 dB at an air-gap of 7 mm
- Increased sound absorption at simultaneous air passage
- Air passage 200 m³/h
- Reading 30 m³/h at a pressure difference of 3,9 Pa (door width 1050 mm)
- High-grade silicone lip, simple lift height adjustment
- Compensation of 15 mm in case of sloping floor at door width of 1000 mm
- Automatic compensation at inclined floors
- No extra need to cut off silicone at both ends
- 7 years warranty

Versions / options

- Planet MinE-F/S ≤ 27 dB
- Planet MinE-F/S → FH ≤ 27 dB, fire-retardant
- Airlock doors
- Special versions on request

Door types with MinE-F/S



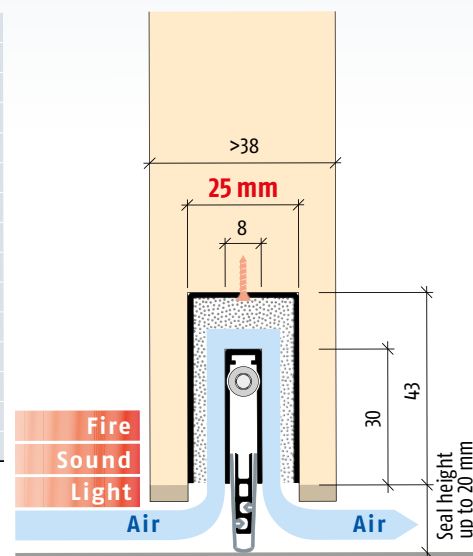
Double leaf doors → please use Planet MinE-S.

More functions



Technical specifications

Profile material	aluminum, → 8 x 30 mm
Channel material	aluminum, → 25 x 43 mm
Groove size	□ width 25,1 mm with depth 43,5 mm / □ width 8,1 mm with depth 30,5 mm
Seal profile	high-grade silicone or high-grade self-extinguishing silicone
Seal height	up to ↓ 20 mm
Sound absorption value	up to ≤ 27 dB at 7 mm space to the floor
Air passage	30 m³/h at an aeration length of 1050 mm and a pressure difference of 3,9 Pa
Lift height adjustment	on the release knob with an Allen key 3 mm
Lengths in stock	460, 585, 710, 835, 960, 1085, 1210, 1335, 1460 mm
Special lengths	on request up to 2000 mm, sliding doors up to 1600 mm
Release	unilaterally on hinge side
Can be shortened	up to the maximum of 125 mm
Fastening	on the side with stainless steel angle brackets and screws
Frame protector plate	stainless, hammer fixed, 20 x 20 mm
Test approvals	on request



B ——— W

available in North America through Bridgeport Worldwide and its dealers

T +1-800-362-1484 — planet.info@BridgeportWorldwide.com

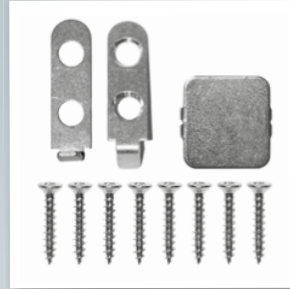
Planet
ASSA ABLOY



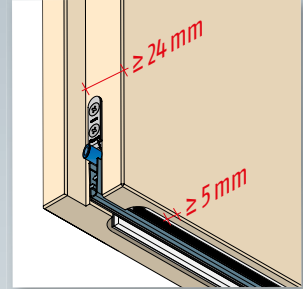
Planet MinE-F/S-drop-down seal



Planet MinE-F/S with fastening brackets, channel and insulation



Planet assembly set MinE-F



Planet MinE-F/S, installed in rebated door



Option: Planet MinE-F/S with bevel lip for **uneven floors**

Order specifications

Planet MinE-F/S ≤ 27 dB
incl. assembly set MinE-F

Prod. code 40xxx-F*

Planet MinE-F/S → FH ≤ 27 dB
incl. assembly set MinE-F

Prod. code 41xxx-F*

* xxx = refer to price list for profile length

Accessories | Options

Planet MinE-F assembly set

incl. 2 fastening brackets (stainless), 8 screws and frame protector plate, type 1 (stainless)

Prod. code 900828

Planet frame protector plate

type 1 (stainless); possible type 2/3/4/5
→ refer to chapter Accessories | Options

Prod. code 900014

Cut the Planet to fix dimension

Prod. code 900225

Sliding door

Prod. code 900908

Advertising text

Planet MinE-F/S ≤ 27 dB

Automatic door drop-down seal **Planet MinE-F/S** ≤ 27 dB for rebated sound absorption doors with an air passage, release on hinge side and automatic compensation at inclined floor, parallel drop-down, seal height up to **↓ 20 mm**, lip from high quality silicone, lateral fastening, profiles from aluminum → **8 x 30 mm / 25 x 43 mm**, MinE-F channel and floor seal equipped with sound absorption materials.



Advertising text

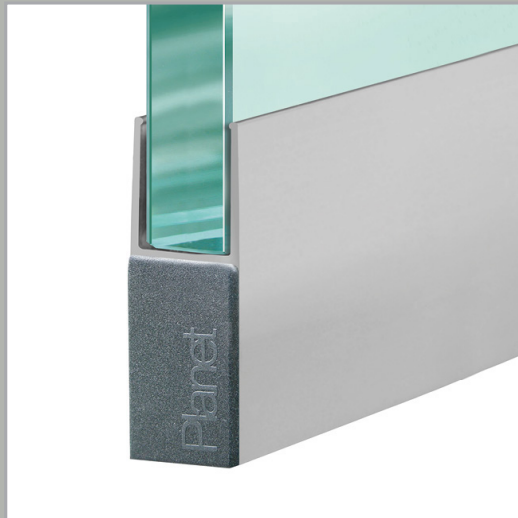


Planet MinE-F/S → FH (fire-retardant) ≤ 27 dB

Automatic door drop-down seal **Planet MinE-F/S → FH** ≤ 27 dB for rebated fire-retardant sound absorption doors with an air passage, release on hinge side with automatic compensation at inclined floor, equipped with intumescent strips. Parallel drop-down, seal height up to **↓ 20 mm**, self-extinguishing silicone lip, lateral fastening, profiles from aluminum → **8 x 30 mm / 25 x 43 mm**, MinE-F channel and floor seal equipped with sound absorption materials.



Planet KG-F Narrow



Trim Under-mount for Frameless Glass

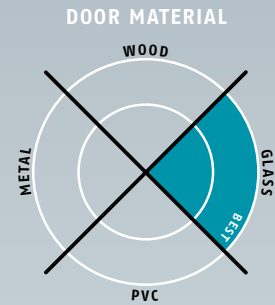
B — W

available in North America through Bridgeport Worldwide and its dealers

T : +1-800-362-1484 — planetinfo@BridgeportWorldwide.com

Planet KG-F8 | F10 narrow

→ 11,5 / 13,5 x 46 mm | ↓ 16 mm | ≤ 48 dB



Main features

- Seal height up to ↓ 16 mm
- Acoustic insulation up to ≤ 48 dB in case of an optimal sealing
- For one and double leaf all-glass doors, with a thickness of 8 and 10 mm or LSG
- Planet KG-F8|F10 to be attached and glued
- Planet drop-down seal cemented in F8|F10 narrow protection profile
- Unilateral and soundless release, silent seal
- Due to parallel drop-down no trailing on the floor
- Automatic compensation at inclined floors
- High-grade silicone lip, simple lift height adjustment
- Can be shortened up to the next shorter length on stock
- 7 years warranty

Versions / options

- Planet KG-F8|F10 narrow → RD ≤ 48 dB, smoke-shielding
- Planet KG-F8|F10 narrow → FH+RD ≤ 48 dB, fire-retardant and smoke-shielding
- Option bevel lip ≤ 44 dB, up to ↓ 20 mm, for uneven floors
- Special versions on request

Surfaces

- Protection profile silver anodised EV1
- Protection profile stainless steel satin anodised

Door types with Planet KG-F8|F10 narrow

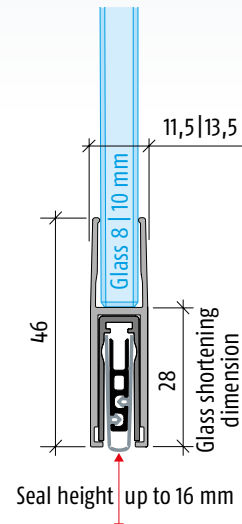


More functions



Technical specifications

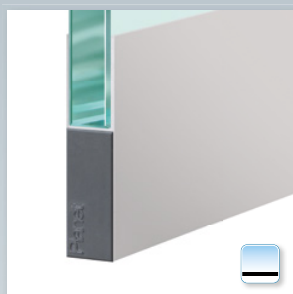
Profile material	aluminum, → 11,5 / 13,5 x 46 mm, silver anodised EV1 or stainless steel satin anodised
Seal profile	high-grade silicone or high-grade self-extinguishing silicone
Seal height	up to ↓ 16 mm
Sound absorption value	up to ≤ 48 dB at 7 mm space to the floor; up to ≤ 47 dB at 14 mm space to the floor
Lift height adjustment	on the release knob with an Allen key 3 mm
Lengths in stock	459, 584, 709, 834, 959, 1084, 1209, 1334, 1459 mm
Special lengths	on request up to 6000 mm, sliding doors up to 1600 mm
Release	unilaterally on hinge side
Can be shortened	up to the maximum of 125 mm
Fastening	to be glued
Frame protector plate	stainless, hammer fixed, 20 x 20 mm
Test approvals	on request



B — W

available in North America through Bridgeport Worldwide and its dealers
T +1-800-362-1484 — planet.info@BridgeportWorldwide.com

Planet
ASSA ABLOY



Planet KG-F8|F10 narrow, with cover plate



Planet KG-F8|F10 narrow, attached and glued, release side



Planet KG-F8|F10 narrow, attached and glued



Option: Planet KG-F8|F10 narrow, bevel lip for **uneven floors**



Accessories: Planet frame protector plate, type 1 (stainless), 20 x 20 mm



Planet KG cover plate

Order specifications

Planet KG-F8 F10 narrow → RD ≤ 48 dB → silver anodised EV1 incl. set of cover plates and frame protector plate, type 1	Prod. code 38xxx-F8s F10s*
Planet KG-F8 F10 narrow → FH+RD ≤ 48 dB → silver anodised EV1 incl. set of cover plates and frame protector plate, type 1	Prod. code 39xxx-F8s F10s*
Planet KG-F8 F10 narrow → RD ≤ 48 dB → stainless steel satin anodised incl. set of cover plates and frame protector plate, type 1	Prod. code 38xxx-F8Xs F10Xs*
Planet KG-F8 F10 narrow → FH+RD ≤ 48 dB → stainless steel satin anodised incl. set of cover plates and frame protector plate, type 1	Prod. code 39xxx-F8Xs F10Xs*

* xxx = refer to price list for profile length

Accessories | Options

Planet frame protector plate type 1 (stainless); possible type 2/3/4/5 → refer to chapter Accessories Options	Prod. code 900014
Cut the Planet to fix dimension	Prod. code 900225
Set of Planet cover plates KG-S/F8 narrow	Prod. code 900836
Set of Planet cover plates KG-A/F10 narrow	Prod. code 902074
Sliding door	Prod. code 900908
Bevel lip (≤ 44 dB, up to ↓ 20 mm) DIN L or DIN R	refer to price list, options/supplements

Advertising text



Planet KG-F8|F10 narrow → RD (smoke-shielding) ≤ 48 dB

Automatic door drop-down seal **Planet KG-F8|F10 narrow → RD** ≤ 48 dB, unilateral release with parallel drop-down and automatic compensation at inclined floor, protection profile silver anodised EV1 or stainless steel satin anodised, to be attached and glued, seal height up to ↓ 16 mm. Lip from silicone. Protection profile and profile made from aluminum → 11,5/13,5 x 46 mm, incl. cover plate on lock side for single leaf doors.

Advertising text

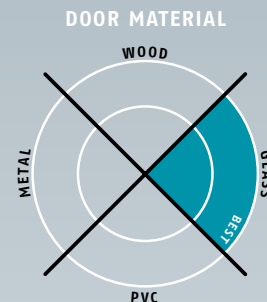


Planet KG-F8|F10 narrow → FH+RD (fire-retardant + smoke-shielding) ≤ 48 dB

Automatic door drop-down seal **Planet KG-F8|F10 narrow → FH+RD** ≤ 48 dB, appropriate for fire-retardant and smoke-shielding doors, sound absorption value SK 1-3, unilateral release with parallel drop-down and automatic compensation at inclined floor, protection profile silver anodised EV1 or stainless steel satin anodised, to be attached and glued, seal height up to ↓ 16 mm. Lip from silicone. Protection profile and profile made from aluminum → 11,5/13,5 x 46 mm, incl. cover plate on lock side for single leaf doors.

Planet KG-F12s | F16s

→ 16,5 / 19,5 x 46 mm | ↓ 18 mm | ≤ 48 dB



Main features

- Seal height up to ↓ 18 mm
- Acoustic insulation up to ≤ 48 dB in case of an optimal sealing
- For one and double leaf all-glass doors, with a thickness of 12 and 16 mm (16 mm glass thickness is suitable for fire doors)
- To be attached and glued
- Planet drop-down seal cemented in protection profile
- Unilateral and soundless release, silent seal
- Due to parallel drop-down no trailing on the floor
- Automatic compensation at inclined floors
- High-grade silicone lip, simple lift height adjustment
- Can be shortened up to the next shorter length on stock
- 7 years warranty

Versions / options

- Planet KG-F12s | F16s → RD ≤ 48 dB, smoke-shielding
- Planet KG-F12s | F16s → FH+RD ≤ 48 dB, fire-retardant and smoke-shielding
- Option bevel lip ≤ 44 dB, up to ↓ 22 mm, for uneven floors
- Special versions on request

Surfaces

- Protection profile silver anodised EV1
- Protection profile stainless steel satin anodised

Door types with Planet KG-F10 | F12

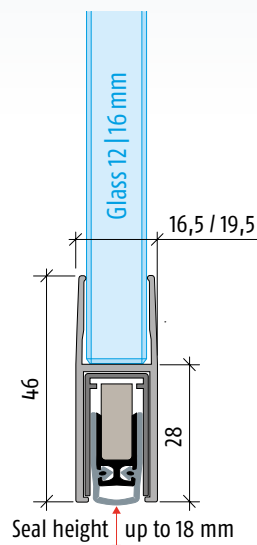


More functions



Technical specifications

Profile material	aluminum, → 16,5/19,5 x 46 mm, silver anodised EV1 or stainless steel satin anodised
Seal profile	high-grade silicone or high-grade self-extinguishing silicone
Seal height	up to ↓ 18 mm
Sound absorption value	up to ≤ 48 dB at 7 mm space to the floor; up to ≤ 46 dB at 14 mm space to the floor
Lift height adjustment	on the release knob with an Allen key 3 mm
Lengths in stock	459, 584, 709, 834, 959, 1084, 1209, 1334, 1459 mm
Special lengths	on request up to 6000 mm, sliding doors up to 1600 mm
Release	unilaterally on hinge side
Can be shortened	up to the maximum of 125 mm
Fastening	to be glued
Frame protector plate	stainless, hammer fixed, 20 x 20 mm
Test approvals	on request



B — W

available in North America through Bridgeport Worldwide and its dealers
T +1-800-362-1484 — planet.info@BridgeportWorldwide.com

Planet
ASSA ABLOY



Planet KG-F12s | F16s,
with cover plate



Planet KG-F12s | F16s, attached and
glued, release side



Planet G-F12s | F16s, attached and
glued



Option: Planet G-F12s | F16s,
bevel lip for **uneven floors**



Accessories: Planet frame protector
plate, type 1 (stainless), 20 x 20 mm



Cover plate Planet G-F12s | F16s

Order specifications

Planet KG-F12s F16s → RD ≤ 48 dB → silver anodised EV1 incl. set of cover plates and frame protector plate, type 1	Prod. code 38xxx-F12s F16s*
PlanetKG-F12s F16s → FH+RD ≤ 48 dB → silver anodised EV1 incl. set of cover plates and frame protector plate, type 1	Prod. code 39xxx-F12s F16s*
Planet KG-F12s F16s → RD ≤ 48 dB → stainless steel satin anodised incl. set of cover plates and frame protector plate, type 1	Prod. code 38xxx-F12Xs F16Xs*
Planet KG-F12s F16s → FH+RD ≤ 48 dB → stainless steel satin anodised incl. set of cover plates and frame protector plate, type 1	Prod. code 39xxx-F12Xs F16Xs*

* xxx = refer to price list for profile length

Accessories | Options

Planet frame protector plate type 1 (stainless); possible type 2/3/4/5 → refer to chapter Accessories Options	Prod. code 900014
Cut the Planet to fix dimension	Prod. code 900225
Set of Planet cover plates Planet KG-F12s F16s	Prod. code 902252
Sliding door	Prod. code 900908
Bevel lip (≤ 44 dB, up to ↓ 22 mm) DIN L or DIN R	refer to price list, op- tions / supplements

Advertising text



Planet KG-F12s | F16s → RD (smoke-shielding) ≤ 48 dB

Automatic door drop-down seal **Planet KG-F12s | F16s → RD** ≤ 48 dB,
unilateral release with parallel drop-down and automatic compensation
at inclined floor, protection profile silver anodised EV1 or stainless steel
satin anodised, to be attached and glued, seal height up to ↓ 18 mm.
Lip from silicone. Protection profile and profile made from aluminum
→ 16,5/19,5 x 46 mm, incl. cover plate on lock side for single leaf doors.

Advertising text

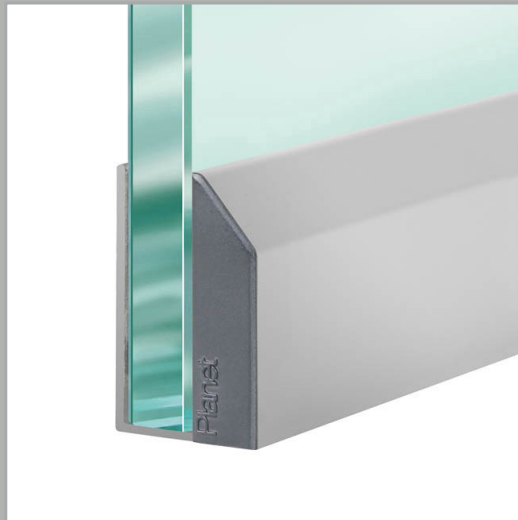


Planet KG-F12s | F16s → FH+RD (fire-retardant + smoke-shielding) ≤ 48 dB

Automatic door drop-down seal **Planet KG-F12s | F16s → FH+RD**
≤ 48 dB, appropriate for fire-retardant and smoke-shielding doors,
unilateral release with parallel drop-down and automatic compensation
at inclined floor, protection profile silver anodised EV1 or stainless steel
satin anodised, to be attached and glued, seal height up to ↓ 18 mm.
Lip from silicone. Protection profile and profile made from aluminum
→ 16,5/19,5 x 46 mm, incl. cover plate on lock side for single leaf doors.



Planet KG-A Narrow



Trim Side-mount for Frameless Glass

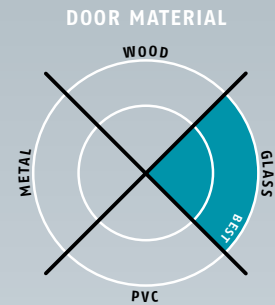
B ——— W

available in North America through Bridgeport Worldwide and its dealers

T : +1-800-362-1484 — planetinfo@BridgeportWorldwide.com

Planet KG-A8 | A10 | A12 narrow

→ 11,5 x 38 mm | ↓ 16 mm | ≤ 48 dB



Main features

- Seal height up to ↓ 16 mm
- Acoustic insulation up to ≤ 48 dB in case of an optimal sealing
- For one and double leaf folding all-glass doors, with a glass thickness of 8, 10 and 12 mm
- Planet KG-A8 | A10 | A12 narrow to be attached and glued
- Planet drop-down seal cemented in KG-A8 | A10 | A12 narrow protection profile
- Unilateral and soundless release, silent seal
- Due to parallel drop-down no trailing on the floor
- Automatic compensation at inclined floors
- High-grade silicone lip, simple lift height adjustment
- Can be shortened up to the next shorter length on stock
- 7 years warranty

Versions / options

- Planet KG-A8 | A10 | A12 narrow → RD ≤ 48 dB, smoke-shielding
- Planet KG-A8 | A10 | A12 narrow → FH+RD ≤ 48 dB, fire-retard. + smoke-shield.
- Option bevel lip ≤ 44 dB, up to ↓ 20 mm, for uneven floors
- Special versions on request

Surfaces

- Protection profile silver anodised EV1
- Protection profile stainless steel satin anodised

Door types with Planet KG-A8 | A10 | A12 narrow

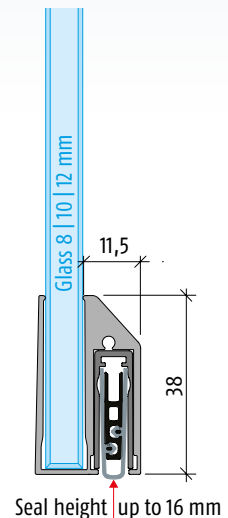


More functions



Technical specifications

Profile material	aluminum, → 11,5 x 38 mm, silver anodised EV1 or stainless steel satin anodised
Seal profile	high-grade silicone or high-grade self-extinguishing silicone
Seal height	up to ↓ 16 mm
Sound absorption value	up to ≤ 48 dB at 7 mm space to the floor; up to ≤ 46 dB at 14 mm space to the floor
Lift height adjustment	on the release knob with an Allen key 3 mm
Lengths in stock	459, 584, 709, 834, 959, 1084, 1209, 1334, 1459 mm
Special lengths	on request up to 6000 mm, sliding doors up to 1600 mm
Release	unilaterally on hinge side
Can be shortened	up to the maximum of 125 mm
Fastening	to be glued
Frame protector plate	stainless, hammer fixed, 20 x 20 mm
Test approvals	on request



B — W

available in North America through Bridgeport Worldwide and its dealers
T +1-800-362-1484 — planet.info@BridgeportWorldwide.com

Planet
ASSA ABLOY



Planet KG-A8 | A10 | A12 narrow, attached and glued



Planet KG-A8 | A10 | A12 narrow, attached and glued release side



Planet KG-A8 | A10 | A12 narrow, with cover plate



Option: Planet KG-A8 | A10 | A12 narrow, bevel lip for **uneven floors**



Accessories: Planet frame protector plate, type 1 (stainless), 20 x 20 mm



Cover plates Planet KG-A narrow

Order specifications

Planet KG-A8 A10 A12 narrow → RD ≤ 48 dB, → silver anodised EV1 incl. set of cover plates and frame protector plate, type 1	Prod. code 38xxx-A8s A10s A12s*
Planet KG-A8 A10 A12 narrow → FH+RD ≤ 48 dB, → silver anodised EV1 incl. set of cover plates and frame protector plate, type 1	Prod. code 39xxx-A8s A10s A12s*
Planet KG-A8 A10 A12 narrow → RD ≤ 48 dB, → stainless steel satin anodised incl. set of cover plates and frame protector plate, type 1	Prod. code 38xxx-A8Xs A10Xs A12Xs*
Planet KG-A8 A10 A12 narrow → FH+RD ≤ 48 dB, → stainless steel satin anodised incl. set of cover plates and frame protector plate, type 1	Prod. code 39xxx-A8Xs A10Xs A12Xs*

* xxx = refer to price list for profile length

Accessories | Options

Planet frame protector plate type 1 (stainless); possible type 2/3/4/5 → refer to chapter Accessories Options	Prod. code 900014
Cut the Planet to fix dimension	Prod. code 900225
Set of Planet cover plates KG-A/F10 narrow	Prod. code 902074
Sliding door	Prod. code 900908
Bevel lip (≤ 44 dB, up to ↓ 20 mm) DIN L or DIN R	refer to price list, options / supplements

Advertising text



Planet KG-A8 | A10 | A12 narrow → RD (smoke-shielding) ≤ 48 dB

Automatic door drop-down seal **Planet KG-A8 | A10 | A12 narrow → RD** ≤ 48 dB, unilateral release with parallel drop-down and automatic compensation at inclined floor, protection profile silver anodised EV1 or stainless steel satin anodised, to be attached and glued, seal height up to ↓ 16 mm. Lip from silicone. Protection profile and profile made from aluminum → 11,5 x 38 mm, incl. cover plate on lock side for folding doors.

Advertising text

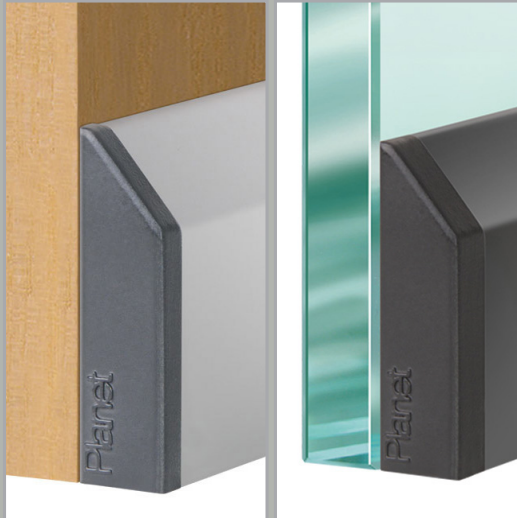


Planet KG-A8 | A10 | A12 narrow → FH+RD (fire-retardant + smoke-shielding) ≤ 48 dB

Automatic door drop-down seal **Planet KG-A8 | A10 | A12 narrow → RD+FH** ≤ 48 dB, appropriate for fire-retardant and smoke-shielding doors, sound absorption value SK 1-3, unilateral release with parallel drop-down and automatic compensation at inclined floor, protection profile silver anodised EV1 or stainless steel satin anodised, to be attached and glued, seal height up to ↓ 16 mm. Lip from silicone. Protection profile and profile made from aluminum → 11,5 x 38 mm, incl. cover plate on lock side for folding doors.



Planet KG-S Narrow



A Retrofit Solution for Any Door

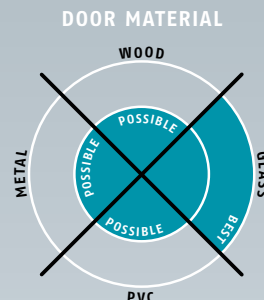
B — W

available in North America through Bridgeport Worldwide and its dealers

T : +1-800-362-1484 — planetinfo@BridgeportWorldwide.com

Planet KG-S narrow

→ 11,5 x 38 mm | ↓ 16 mm | ≤ 48 dB



Main features

- Seal height up to ↓ 16 mm
- Acoustic insulation up to ≤ 48 dB in case of an optimal sealing
- Planet KG-S narrow laterally pasted with UV cement or double adhesive tape
- Unilateral and soundless release, silent seal
- Due to parallel drop-down no trailing on the floor
- Automatic compensation at inclined floors
- High-grade silicone lip, simple lift height adjustment
- Can be shortened up to the next shorter length on stock
- 7 years warranty

Versions / options

- Planet KG-S narrow → RD ≤ 48 dB, smoke-shielding
- Planet KG-S narrow → FH+RD ≤ 48 dB, fire-retardant + smoke-shielding
- Option bevel lip ≤ 44 dB, up to ↓ 20 mm, for uneven floors
- Special versions on request

Surfaces

- Protection profile **silver anodised EV1**
- Protection profile **stainless steel satin anodised**

Door types with Planet KG-S narrow

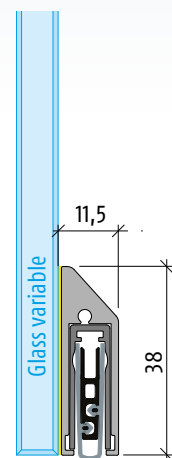


More functions



Technical specifications

Profile material	aluminum, → 11,5x38 mm, silver anodised EV1 or stainless steel satin anodised
Seal profile	high-grade silicone or high-grade self-extinguishing silicone
Seal height	up to ↓ 16 mm
Sound absorption value	up to ≤ 48 dB at 7 mm space to the floor; up to ≤ 47 dB at 14 mm space to the floor
Lift height adjustment	on the release knob with an Allen key 3 mm
Lengths in stock	459, 584, 709, 834, 959, 1084, 1209, 1334, 1459 mm
Special lengths	on request up to 6000 mm, sliding doors up to 1600 mm
Release	unilaterally on hinge side
Can be shortened	up to the maximum of 125 mm
Fastening	to be pasted
Frame protector plate	stainless, hammer fixed, 20x20 mm
Test approvals	on request



Seal height up to 16 mm



B — W

available in North America through Bridgeport Worldwide and its dealers
T +1-800-362-1484 — planet.info@BridgeportWorldwide.com

Planet
ASSA ABLOY



Planet KG-S narrow, pasted laterally on glass door, release side



Planet KG-S narrow, black C35 satin anodised



Option: Planet KG-S narrow, bevel lip for **uneven floors**



Planet KG-S narrow, with screw for Quick install



Option: Planet KG-S narrow, laterally pasted on **wooden door**



Option: Planet KG-S narrow, laterally pasted on **metal door**



Option: Planet KG-S narrow, laterally pasted on **PVC door**



Accessories: Planet frame protector, screw for fixing the seal and set of Planet cover plates

Order specifications

Planet KG-S narrow → RD ≤ 48 dB → silver anodised EV1 incl. set of cover plates and frame protector plate, type 1	Prod. code 38xxx-Ss*
Planet KG-S narrow → FH+RD ≤ 48 dB → silver anodised EV1 incl. set of cover plates and frame protector plate, type 1	Prod. code 39xxx-Ss*
Planet KG-S narrow → RD ≤ 48 dB → stainless steel satin anodised incl. set of cover plates and frame protector plate, type 1	Prod. code 38xxx-SXs*
Planet KG-S narrow → FH+RD ≤ 48 dB → stainless steel satin anodised incl. set of cover plates and frame protector plate, type 1	Prod. code 39xxx-SXs*

* xxx = refer to price list for profile length

Accessories | Options

Planet frame protector plate type 1 (stainless); possible type 2/3/4/5 → refer to chapter Accessories Options	Prod. code 900014
Cut the Planet to fix dimension	Prod. code 900225
Set of Planet cover plates für KG-S / F8 narrow	Prod. code 900836
Adhesive tape set for Planet KG-S narrow	Prod. code 900837
Sliding door	Prod. code 900908
Bevel lip (≤ 44 dB, up to ↓ 20 mm) DIN L or DIN R	refer to price list, options / supplements



Quick install: with the screw you can fix the seal in no time and the door is immediately ready to use!

Advertising text



Planet KG-S narrow → RD (smoke-shielding) ≤ 48 dB
Automatic door drop-down seal Planet KG-S narrow → RD ≤ 48 dB, unilateral release with parallel drop-down and automatic compensation at inclined floor, protection profile silver anodised EV1 or stainless steel satin anodised, pasted laterally on glass door. Seal height up to ↓ 16 mm. Lip from silicone. Protection profile and profile made from aluminum → 11,5x38 mm, incl. cover plate on lock side for single leaf doors.

Advertising text



Planet KG-S narrow → FH+RD (fire-retardant + smoke-shielding) ≤ 48 dB
Automatic door drop-down seal Planet KG-S narrow → FH+RD ≤ 48 dB, unilateral release with parallel drop-down and automatic compensation at inclined floor, protection profile silver anodised EV1 or stainless steel satin anodised, pasted laterally on glass door. Seal height up to ↓ 16 mm. Self-extinguishing silicone lip. Protection profile and profile made from aluminum → 11,5x38 mm, incl. cover plate on lock side for single leaf doors.



KEEPING MAKERS MAKING

contact Bridgeport Worldwide to push your demountable partition system to the next level

T :+1-800-362-1484 x38 — planetinfo@BridgeportWorldwide.com