



Eye-catchers you can feel in your fingertips

Our high-quality locking cylinders enable you to show off your keen eye for detail. Choose between coarse and matt, a coloured stainless steel look or smooth and shiny: a diverse range of finishes in a quality you can see and feel.



Your locking system thus becomes a design element that integrates visually and haptically into its setting and completes the overall concept.





Unique variety

The tactile and visual quality of the surfaces is obtained thanks to our specially developed, multi-stage coating processes. Our in-house electroplating department enables us to offer a range of coloured finishes to our cylinders and locks – from metallic surfaces such as nickel, chrome, stainless steel, bronze and brass to lacquered finishes in white or brown or even burnishing using a chemical process.

A rough, matt finish is obtained by blasting, while grinding creates a coloured stainless steel look and polishing achieves a unique shine. Finally, electrolyte bath treatment can provide a metallic coating such as nickel or chromium. This process increases the hardness and improves resistance to abrasion and wear.



Flexibly adaptable

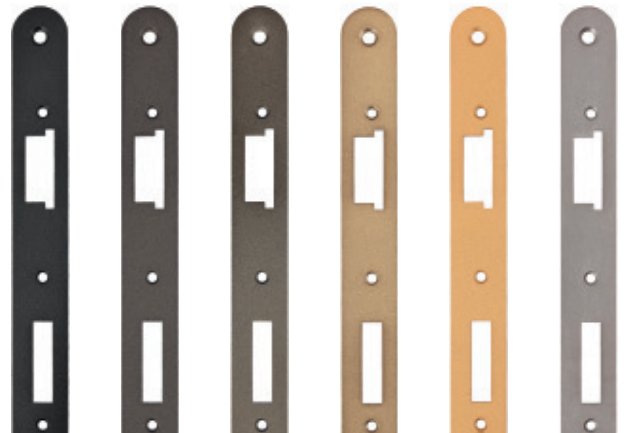
Our modular system allows you to adapt half, double and even knob cylinders on site to the required door thickness. The lock halves of the modular system are available in all special finishes. You can thus opt for the internal half in Midnight Black and the external half in unlacquered brass. A dizzying range of choices that lets you profit from complete flexibility along with enhanced security and precision finishing.





A harmonious overall look

The choice of finishes extends across many of our locking solutions, such as the cuffs and locking plates of the locks, which can have the same colour as the corresponding electronic cylinders. You thus obtain an overall visual and tactile experience that blends smoothly into the visual concept of the building.





Environmentally-aware finishing

Sustainability takes priority in all of our processes. This means that we process the wastewater from electroplating until it almost reaches drinking water quality. As a certified specialised company pursuant to the Federal Water Act (WHG) and the Ordinance on facilities for handling substances hazardous to water (AwSV), we are obliged to continually improve our electroplating processes. These and other measures also contribute to a reduction in CO₂ emissions and to energy efficiency. Formerly hazardous substances have been replaced by non-hazardous ones.



Ämtlich anerkannte Sachverständigen
Organisation gemäß § 32 AwSV
Kennzeichen BWL 68-4566-17733/2019
J. ARGE Technische Prüfungsstellen o. V.
Am Seukendorf 3, 36104 Seukendorf
Tel: 0551 9440208 • Fax: 0551 9440219
Email: seukendorf@ipo-verbund.de
Website: <https://www.ipo-verbund.de>



Zertifikat

Die Firma: C. Ed. Schulte GmbH
Zylinderschlossfabrik
Friedrichstr. 243
42551 Velbert

mit den betrieblich verantwortlichen Personen: Herren Mayer, Dagdelen und Ribnitz

und Betriebsstätten in: Velbert

wird zertifiziert als

Fachbetrieb nach WHG und AwSV § 62

Nach den mit Erfolg durchgeführten Prüfungen gemäß § 62 AwSV wurde am **27.09.2022** ein Überwachungsvertrag abgeschlossen, der für folgende Tätigkeiten gilt:

Tätigkeitsbereich: A2 b, B1 + B2 b + c

Die aufgeführten Tätigkeitsbereiche entsprechen der auf der Rückseite dargestellten Matrix und Erklärungen, bitte überprüfen.

Dieses Zertifikat hat eine Laufzeit bis: **09/2024**

Seukendorf, 27.09.2022
Orc. Datum


J. ARGE IPO e.V. (Technische Leitung)



ground and brushed



blasted



polished



lacquered

A matter of what feels right

Locking systems are of course just a detail within your building – yet one that leaves a lasting impression. The door handle, for example, is the first thing you touch when entering a room and the last when you leave. All the more important, then, that it has an elegant shape and fine surface quality to ensure tactical and visual appeal. The right shape can add an elegant emphasis to a building's design concept and can contribute significantly to its appearance. Use the following pages to find the optimum combination of visual and tactile elements for your locking solution.



Ground for a coloured stainless steel effect

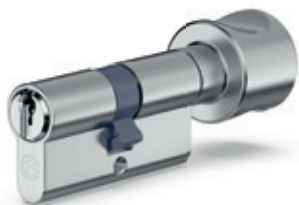
This classic finish, achieved using grinding belts, provides a robust, coloured stainless steel look and is also used for chrome-plated and matt brushed brass components.







ground and brushed



MMVG

Nickel-plated dull

Front surface: **ground**

Side surfaces: **untreated**

Plug: **not ground**



MGCR

Brushed chrome plated

Front surface: **ground**

Side surfaces: **brushed**

Plug: **ground chrome-plated**



M_SS

Nickel-plated brushed protective

Front surface: **ground**

Side surface: **brushed**

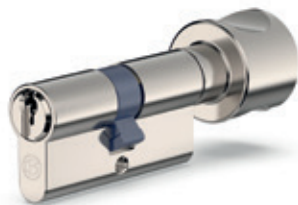
Plug: **ground nickel-plated**

Clear lacquer: **semi-gloss**





ground and brushed



MMVB

Nickel-plated brushed

Front surface: **ground**

Side surfaces: **brushed**

Plug: **ground nickel-plated**



MVGE

Nickel-plated dull protective

Front surface: **ground**

Side surface: **brushed**

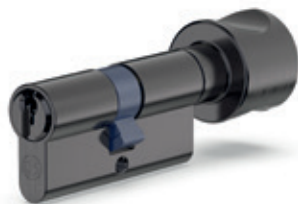
Plug: **not ground nickel-plated**

Clear lacquer: **semi-gloss**





ground and brushed



F44R

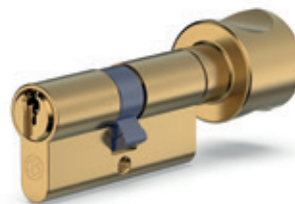
Brass protective nickel antique

Front surface: **brushed**

Side surface: **brushed**

Plug: **brushed**

Ruthenium coated



MMGB

Brass brushed

Front surface: **ground**

Side surface: **brushed**

Plug: **ground**

Clear lacquer: **semi-gloss**



Blasted in rough and matt variants

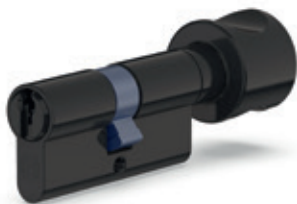
Glass beads are fired onto the untreated surface at high pressure to make it rough and matt. A unique structure for a special touch.







blasted



MMSW

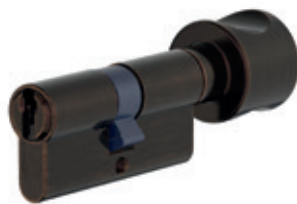
Black-anthracite coloured

Front surface: **blasted**

Side surface: **blasted**

Plug: **blasted coloured**

Clear lacquer: **gloss**



KANT

Brass copper antique

Front surface: **blasted**

Side surface: **blasted**

Plug: **blasted coloured & brushed**

Clear lacquer: **gloss**



MANT

Brass brushed antique

Front surface: **blasted**

Side surface: **blasted**

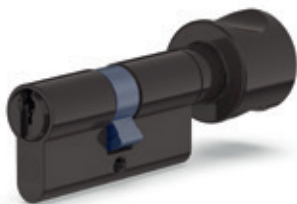
Plug: **blasted coloured & brushed**

Clear lacquer: **gloss**





blasted



MBRH

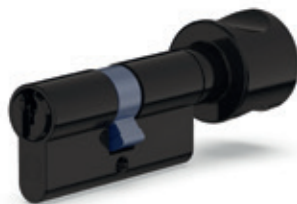
Light brown coloured

Front surface: **blasted**

Side surface: **blasted**

Plug: **blasted coloured**

Clear lacquer: **gloss**



MBRD

Dark brown coloured

Front surface: **blasted**

Side surface: **blasted**

Plug: **blasted coloured**

Clear lacquer: **gloss**



MALT

Brass smooth antique

Front surface: **blasted**

Side surface: **blasted**

Plug: **blasted coloured &**

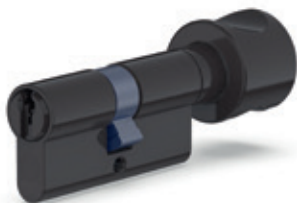
plug brushed

Clear lacquer: **gloss**





blasted



MBR

Brass bronze

Front surface: **blasted**

Side surface: **blasted**

Plug: **blasted coloured**

Clear lacquer: **gloss**



MMCR

Chrome-plated velours

Front surface: **blasted**

Side surface: **blasted**

Plug: **blasted chrome-plated**



MGV

Nickel-plated velours

Front surface: **blasted**

Side surface: **blasted**

Plug: **blasted nickel-plated**



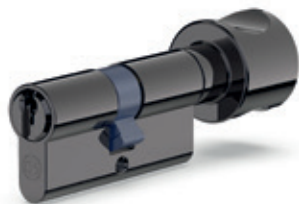
Polished for that extra shine

The heat generated by friction during polishing melts the top layer into the fine grinding marks thus smoothing the surface. An effect you can see and feel.





polished



F50R

Brass protective black nickel

Front surface: **polished**

Side surface: **polished**

Plug: **polished**

Ruthenium coated



MPV

Nickel-plated polished

Front surface: **polished**

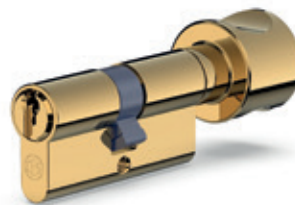
Side surface: **polished**

Plug: **polished**

nickel-plated



polished



MPCR

Chrome-plated polished

Front surface: **polished**

Side surface: **polished**

Plug: **polished**

chrome-plated



MPOL

Brass polished

Front surface: **polished**

Side surface: **polished**

Plug: **polished**

Clear lacquer: **gloss**

Other variants:

MPOU without clear gloss lacquer



Lacquered for a world of clear colours

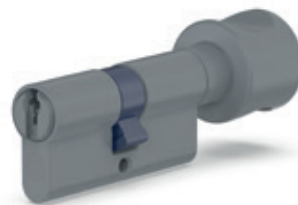
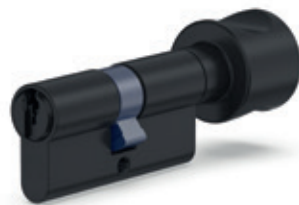
Our lacquered variants provide an accent with their striking colours – or integrate perfectly into their surroundings. The choice is entirely yours.







lacquered



C502

White RAL 9016 -
bicolour MPV

Front surface: **lacquered**

Side surface: **lacquered**

Plug: **MPV**

Other variants:

C500 with white lacquered plug

C506 with plug in polished brass
(MPOL)



C520

Rustic umber lacquered

Front surface: **lacquered**

Side surface: **lacquered**

Plug: **lacquered**



C510

Pebble Grey - unicolour

Front surface: **lacquered**

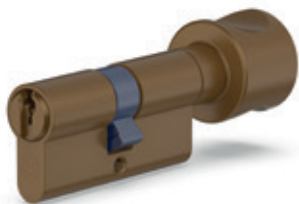
Side surface: **lacquered**

Plug: **lacquered**





lacquered



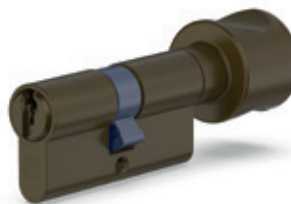
C640 C642

Sunset Bronze - unicolour
Sunset Bronze - bicolour

Front surface: **lacquered**

Side surface: **lacquered**

Plug: **lacquered / MPV**



C650 C652

Rising Bronze - unicolour
Rising Bronze - bicolour

Front surface: **lacquered**

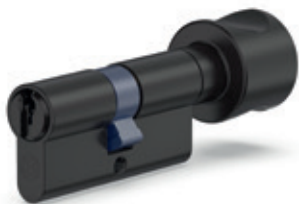
Side surface: **lacquered**

Plug: **lacquered / MPV**





lacquered



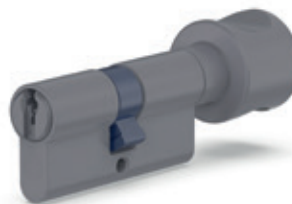
C660 C662

Dawn Bronze - unicolour
Dawn Bronze - bicolour

Front surface: **lacquered**

Side surface: **lacquered**

Plug: **lacquered / MPV**



C670 C672

Moonlight Silver - unicolour
Moonlight Silver - bicolour

Front surface: **lacquered**

Side surface: **lacquered**

Plug: **lacquered / MPV**





lacquered



C680 C682

Dusk Grey - unicolour

Dusk Grey - bicolour

Front surface: **lacquered**

Side surface: **lacquered**

Plug: **lacquered / MPV**



C690 C692

Midnight Black - unicolour

Midnight Black - bicolour

Front surface: **lacquered**

Side surface: **lacquered**

Plug: **lacquered / MPV**



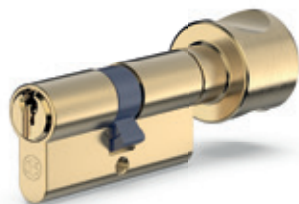
Living colours for natural beauty

The pure brass material (MESN) displays its pure, unprocessed beauty. For the F79 finish the material is glass-blasted on all surfaces, coloured brown and then rubbed with oil.



In both variants the look changes according to intensity of use, lending real character to your locking system – real living colours.





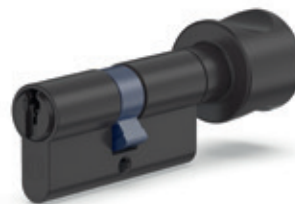
MESN

Brass nature

Front surface: **untreated**

Side surface: **untreated**

Plug: **untreated**



F79

Brass oil rubbed

Front surface: **blasted**

Side surface: **blasted**

Plug: **blasted**



Colour code	Designation	Front surface	Side surface	Plug	Clear lacquer
ground and brushed p. 14					
01 = MMVG	Nickel-plated dull	ground	untreated	not ground	no
33 = MGCR	Brushed chrome plated	ground	brushed	ground	no
23 = M_SS	Nickel-plated brushed protective	ground	brushed	ground	semi-gloss
31 = MMVB	Nickel-plated brushed	ground	brushed	ground	no
20 = MVGE	Nickel-plated dull protective	ground	brushed	not ground	semi-gloss
13 = F44R	Brass protective nickel antique	brushed	brushed	brushed	no
02 = MMGB	Brass brushed	ground	brushed	ground	semi-gloss
blasted p. 22					
22 = MMSW	Black anthracite coloured	blasted	blasted	blasted	gloss
18 = KANT	Brass copper antique	blasted	blasted	blasted	gloss
17 = MANT	Brass brushed antique	blasted	blasted	blasted	gloss
16 = MBRH	Light brown coloured	blasted	blasted	blasted	gloss
15 = MBRD	Dark brown coloured	blasted	blasted	blasted	gloss
08 = MALT	Brass smooth antique	blasted	blasted	blasted	gloss
07 = MBR	Brass bronze	blasted	blasted	blasted	gloss
04 = MCCR	Chrome-plated velours	blasted	blasted	blasted	no
49 = MGV	Nickel-plated velours	blasted	blasted	blasted	no
polished p. 30					
14 = F50R	Brass protective black nickel	polished	polished	polished	no
06 = MPV	Nickel-plated polished	polished	polished	polished	no
05 = MPCR	Chrome-plated polished	polished	polished	polished	no
03 = MPOL	Brass polished	polished	polished	polished	gloss
30 = MPOU	Brass polished unlaquered	polished	polished	polished	no

Colour code	Designation	Front surface	Side surface	Plug	Clear lacquer
lacquered p. 36					
51 = C500	White silk mat RAL 9016	lacquered	lacquered	lacquered	no
52 = C502	White RAL 9016 - bicolour MPV	lacquered	lacquered	MPV	no
53 = C506	White RAL 9016 - bicolour MPOL	lacquered	lacquered	MPOL	no
19 = C520	Rustic umber lacquered	lacquered	lacquered	lacquered	no
50 = C510	Pebble Grey - unicolour	lacquered	lacquered	lacquered	no
47 = C640	Sunset Bronze - unicolour	lacquered	lacquered	lacquered	no
48 = C642	Sunset Bronze - bicolour	lacquered	lacquered	MPV	no
45 = C650	Rising Bronze - unicolour	lacquered	lacquered	lacquered	no
46 = C652	Rising Bronze - bicolour	lacquered	lacquered	MPV	no
43 = C660	Dawn Bronze - unicolour	lacquered	lacquered	lacquered	no
44 = C662	Dawn Bronze - bicolour	lacquered	lacquered	MPV	no
41 = C670	Moonlight Silver - unicolour	lacquered	lacquered	lacquered	no
42 = C672	Moonlight Silver - bicolour	lacquered	lacquered	MPV	no
39 = C680	Dusk Grey - unicolour	lacquered	lacquered	lacquered	no
40 = C682	Dusk Grey - bicolour	lacquered	lacquered	MPV	no
37 = C690	Midnight Black - unicolour	lacquered	lacquered	lacquered	no
38 = C692	Midnight Black - bicolour	lacquered	lacquered	MPV	no
Living colours p. 46					
36 = MESN	Brass nature	untreated	untreated	untreated	no
24 = F79	Brass oil rubbed	blasted	blasted	blasted	no



Colour sample box

Please be aware that the colours reproduced by printing on paper can only be approximations to the true colours of the finishes. You are therefore welcome to use the colour codes on pages 48 - 49 to order your own colour sample box with up to 6 finishes, so that you can select the best colour for your individual requirements.

Send your order request by e-mail to:

export@ces.eu

Example order:

Item 096150V colour sample sticker

1. 01 (MMVG)
2. 08 (MALT)
3. 14 (F50R)
4. 06 (MPV)
5. 30 (MPOU)
6. 19 (C520)



Teaming up for security
since 1840



B ————— **W**

available in North America through Bridgeport Worldwide and its dealers

T : **+1-800-362-1484** — info@BridgeportWorldwide.com

C.Ed. Schulte GmbH
Zylinderschlossfabrik

Friedrichstraße 243
42551 Velbert, Germany

📞 +49 2051 204 0

📞 +49 2051 204 229

✉ export@ces.eu

ces.eu

Made in Germany