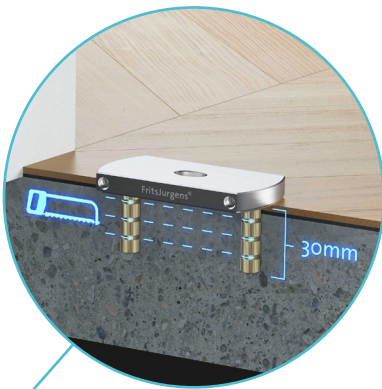


# FritsJurgens®

## FLOOR & CEILING PLATES

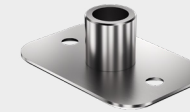
A pair of 30mm Pins come standard with the Rectangular Floor Plate for situations when reaching a more stable subfloor is necessary.



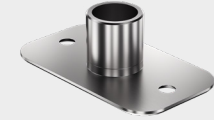
**Rectangular Floor Plate**  
(FP.M.X.X.S.SS)  
Satin Stainless Steel  
80 x 40 x 9 mm



**Round Floor Plate**  
(FP.M.X.X.R.SS)  
Satin Stainless Steel  
Ø80 x 9 mm



**Ceiling Plate Class B**  
(CP.X.X.B.S.SS)  
for 10 mm diameter spindle  
Satin Stainless Steel  
60 x 40 x 20 mm



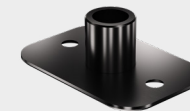
**Ceiling Plate Class G**  
(CP.X.X.G.S.SS)  
for 15 mm diameter spindle  
Satin Stainless Steel  
70 x 40 x 23 mm



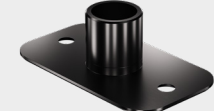
**Rectangular Floor Plate**  
(FP.M.X.X.S.BK)  
PVD Black  
80 x 40 x 9 mm



**Round Floor Plate**  
(FP.M.X.X.R.BK)  
PVD Black  
Ø80 x 9 mm



**Ceiling Plate Class B**  
(CP.X.X.B.S.BK)  
for 10 mm diameter spindle  
PVD Black  
60 x 40 x 20 mm



**Ceiling Plate Class G**  
(CP.X.X.G.S.BK)  
for 15 mm diameter spindle  
PVD Black  
70 x 40 x 23 mm



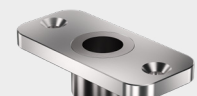
**Non-adjustable Floor Plate**  
(FP.M.X.X.SN.SS)  
Satin Stainless Steel  
80 x 40 x 9 mm



**Square-Cornered Flush Plate**  
(FP.M.X.X.FS.SS)  
Satin Stainless Steel  
80 x 40 x 11 mm



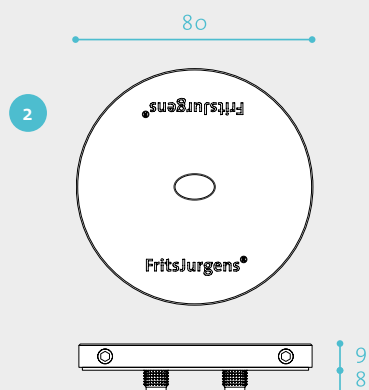
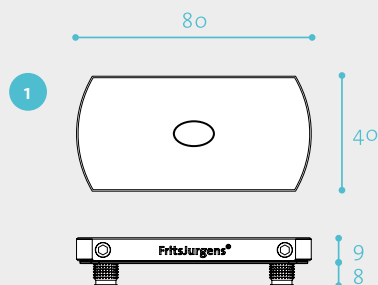
**Round-Cornered Flush Plate**  
(FP.M.X.X.FR.SS)  
Satin Stainless Steel  
80 x 40 x 11 mm



**Receiver for Top pivot Reversed**  
(CP.X.X.G.N.SS)  
Satin Stainless Steel  
70 x 32 x 18 mm

The standard floor plate can be obtained in a rectangular and a round version and is available in brushed stainless steel (Series 420) and PVD satin black finish. Flush floor plates can be obtained in a square-cornered and a round-cornered version and available in the satin stainless finish only. FritsJurgens floor plates are made of solid tempered steel, and fully scratch resistant. The standard ceiling plates (available in rectangular version only) are available in brushed stainless steel and PVD black. Ceiling plates for the grommet top pivots would be the Class G plates. Receivers for the Top pivot Reversed are available in brushed stainless steel only.

## FLOOR PLATES



## SURFACE-MOUNTED FLOOR PLATES

The Surface-Mounted Floor Plates are mounted directly to the finished surface of the floor. They are made from tempered 420 series stainless steel. They are available in satin stainless steel and PVD satin black finishes (designated in documentation as Stainless Steel or Black, respectively).

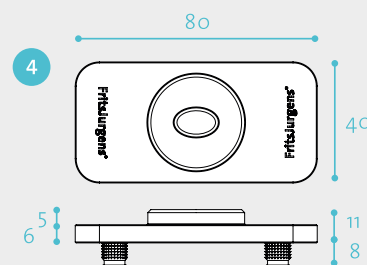
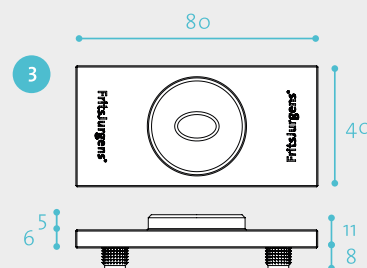
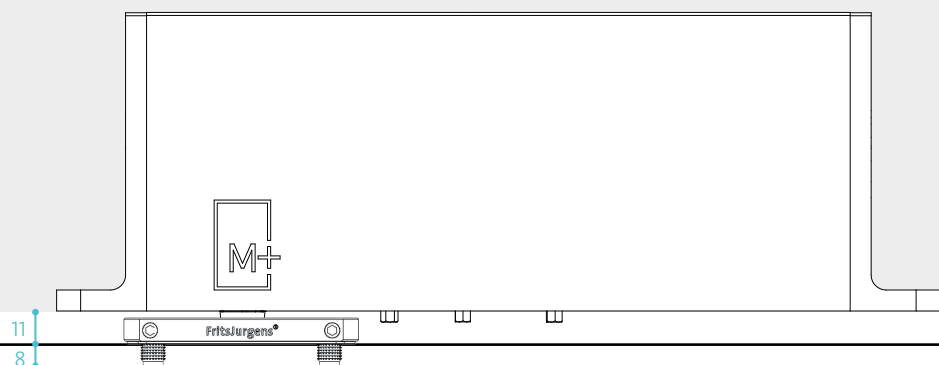
The plates feature the ability to adjust the 0° position of the door by  $\pm 2.5^\circ$  after the door is mounted. The exception to this is the Rectangular, Non-Adjustable floor plate that is used only with System One which does not have this feature.

Total clearance under the installed door is 11 mm.

Installation is by two or four pins that penetrate into the floor. Rectangular floor plates are delivered with two pins that are 8 mm long (as shown) and two pins that are 30 mm long and can be cut down as needed (see diagram on previous page). A specially-formulated epoxy is used to secure the plate to the floor surface.

**1 Rectangular Floor Plate**  
(FP.M.X.X.S.SS/BK)

**2 Round Floor Plate**  
(FP.M.X.X.R.SS/BK)



## FritsJurgens®

## FLUSH-MOUNTED FLOOR PLATES

The Flush-Mounted Floor Plates can be integrated into wood, metal, or masonry thresholds. These are also made of tempered 420 series stainless steel and are scratch resistant. They are available in a satin stainless steel finish only (designated in documentation as Stainless Steel).

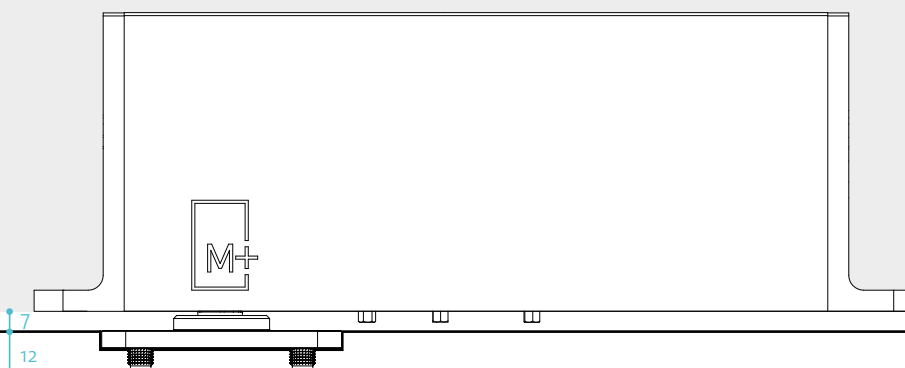
The 0° adjustment is not available for this floor plate option.

Total clearance under the installed door is 7 mm.

Installation is by four pins that penetrate 8 mm further into the floor. Epoxy included is used to secure the plate to the floor surface.

**3 Square-Cornered Flush Floor Plate**  
(FP.M.X.X.FS.SS)

**4 Round-Cornered Flush Floor Plate**  
(FP.M.X.X.FR.SS)



FritsJurgens offers floor plates for virtually every possible surface or threshold condition. For exterior doors utilizing drop seal technology, the flush floor plates provide an optimal condition to seal the bottom of the door as well as reducing the clearance. In both approaches the penetration into the floor is minimal allowing for easy and accurate install including in projects where radiant floor heating is present.