

SIMONSWERK
 TECTUS®

TE 645 3D Energy

with continuous energy transfer for flush high performance heavy-duty doors -
 with new snap-fitting connection

hinge

Technical details

| | |
|--|-----------------|
| load capacity | 661 lbs |
| length (door/frame) | 10.236/11.024 " |
| width (door) | 1.339 " |
| width (frame) | 1.417 " |
| cutter diameter | 0.945 " |
| opening angle | 180° degree |
| no. of wires | 16 No. of wires |
| wire cross section | 0.006 " |
| max. voltage: 50 V (voltage source acc. SELV-DIN EN 61140) | |
| max. current | 0,8 A |

descriptive text

SIMONSWERK TECTUS hinge TE 645 3D Energy with integrated and continuous energy transfer. Completely concealed for flush, high performance heavy-duty doors with wood, steel and aluminum frames. With easy 3D adjustment, load capacity up to 300 kg (661 lbs), opening angle up to 180°, overall length 280 mm (11.024"), right hand and left hand applicable, maintenance-free slide bearings, three-dimensionally adjustable: side +/- 3,0 mm (0.118"), height +/- 3,0 mm (0.118"), compression +/- 1,0 mm (0.039"). Finish...

Note

The load capacity mentioned above refers to the use of 2 hinges per door leaf (height : width ratio 2:1).

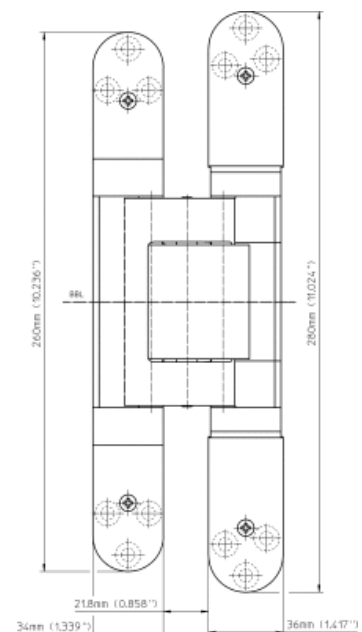
Application on steel frames is subject to special frame facings.
 Please specify accessories when ordering.

Product features

- completely concealed hinge system
- for wood, steel or aluminum frames
- for flush high performance commercial doors
- maintenance-free slide bearings
- easily 3D adjustable (side +/- 3.0 mm (0.118"), height +/- 3.0 mm (0.118"), compression +/- 1.0 mm (0.039"))
- with continuous energy transfer
- individual connection adapter options

Functional areas

fire resistance, smoke resistance, soundproof und forced entry resistance



front view

While every due care has been taken, we cannot be held responsible for errors, omissions or defects. We kindly ask for your understanding.

© SIMONSWERK North America, Inc.

SIMONSWERK

TECTUS®

TE 645 3D Energy

with continuous energy transfer for flush high performance heavy-duty doors - with new snap-fitting connection

hinge

Combination

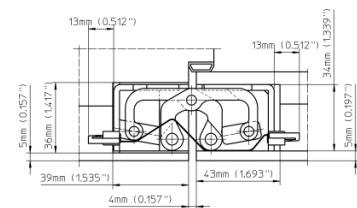
| | |
|-------------|--|
| accessories | adapter 1 TECTUS Energy universal adapter TECTUS Energy round cable TECTUS Energy |
| receivers | TE 645 3D SZ |

installation tools

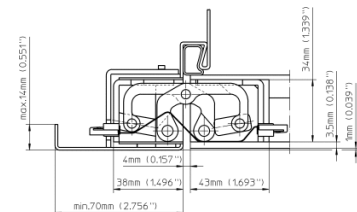
| | |
|---------------------|---------------|
| universal milling | |
| frame long | |
| template 5 250945 5 | frame, step 1 |
| template 5 250946 5 | frame, step 2 |
| template 5 250947 5 | door, step 1 |
| template 5 250948 5 | door, step 2 |

Items (DIN reference: non-handed)

| | |
|---------------------|----------------------------|
| Finish(es) | satin chrome look (F1) |
| packing unit | pack of 1 |
| item number | 5 400650 0 12401 |
| Finish(es) | stainless steel look (SSL) |
| packing unit | pack of 1 |
| item number | 5 400650 0 12601 |



commercial wood frames



hollow metal frames