

The logo for athmer, featuring the word "athmer" in white lowercase letters on a red trapezoidal background.

Schall-Ex™ Glass Solutions

solutions for high-level sound protection and easy installation

athmer's Schall-Ex™ family of glass seal solutions meets the increased design and sound insulation requirements of the glass door and demountable partition markets.

As a modular system, the re-engineered Schall-Ex™ glass offering establishes a consistent overall profile height for all glass thicknesses, including 3/8", 1/2", 11/16", for tempered or laminated safety glass. The drop seal can be handed in the field by simply turning it, and features a black silicone seal profile and actuator as standard.

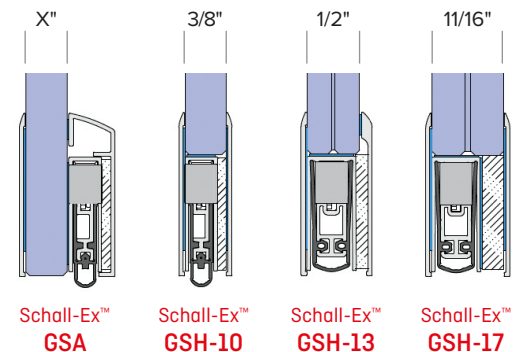
The door can be installed immediately after bonding to the glass, the Schall-Ex™ glass door drop seals are unique in the market.

Use cases:

- Schall-Ex™ Slide GS-A for sliding glass doors.
- Schall-Ex™ GS-A for hinged glass doors.

What makes it unique?

- High-tech adhesive tape used for install = immediate bonding and load bearing
- Retrofit solutions for hinged and sliding glass doors of any glass thickness
- Provides an effective barrier against sound transfer at the door threshold
- Standard black silicone seal profile for high-design look



Scan here to download the Spec Sheets



Schall-Ex™
GSA



Schall-Ex™
GSH-10



Schall-Ex™
GSH-13



Schall-Ex™
GSH-17

See next page for additional information.



About athmer:

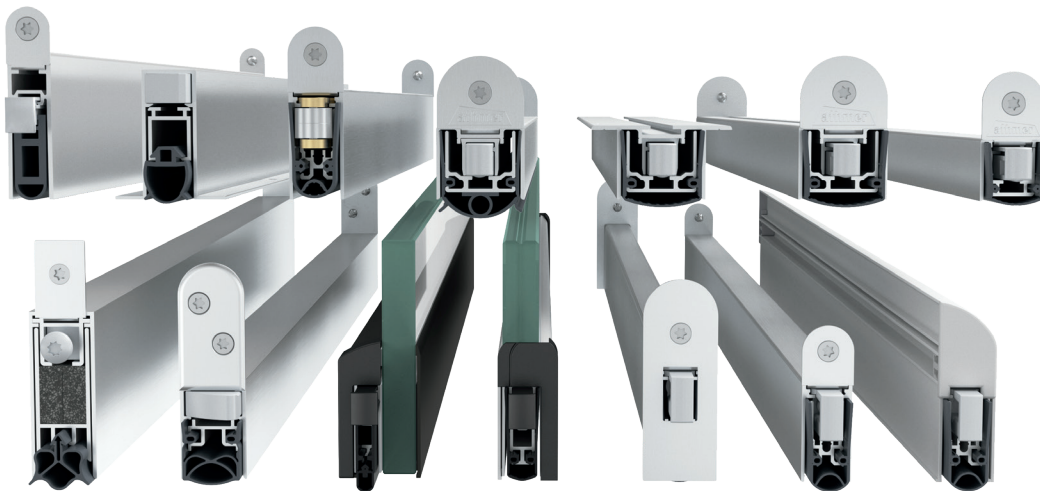
athmer is a leader in the drop seal market and offers solutions for doors of all type and function.

Why a drop seal?

A drop seal is designed to close the gap between the bottom of the floor and the door and the top of the door and the ceiling. The total solution ensures protection from smoke, light, noise, weather and energy loss through the opening.

Common features across athmer drop seal applications:

- Removeable actuator for easy adjustment and construction site protection
- Parallel actuation drops the seal evenly on both sides of the floor to prevent drag and ensure longevity
- Self-leveling to compensate for uneven floors.
- Can be ordered to length; stock inventory is field trimmable



B — W

BRIDGEPORT WORLDWIDE

Distributed in North America by Bridgeport Worldwide | +1-800-362-1484 | info@bridgeportworldwide.com