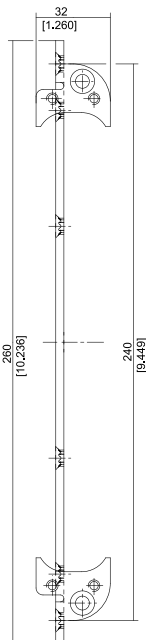


## TECTUS

### TE 640 3D BW

Mounting brackets for heavy-duty doors with claddings up to either 16 mm (0.630") or 20 mm (0.787") on both sides



<b>Receiver</b>		<b>Commercial frame</b>
-----------------	--	-------------------------

**Technical Data**

Load capacity	120 kg (264 lbs.)
---------------	-------------------

**Finishes**

blue galvanized (SW 010)

**Combinations**

Hinge	TE 640 3D
-------	-----------

**Note**

The load capacity mentioned above refers to the use of 2 hinges per door leaf with a height / width ratio of 2:1.

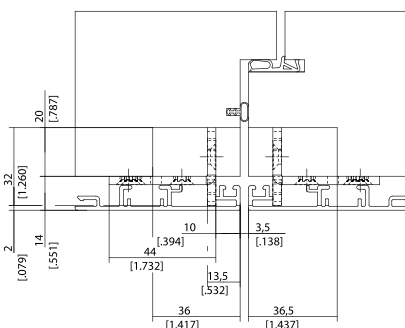
The cladding material where the hinge will be installed, must be removed in order for the bracket to be installed. This bracket can be used for doors with standard cladding thickness of either 5/8" or 3/4" on both sides. The mounting brackets are sold individually. Please specify the correct mounting bracket with your order.

**Available Options**

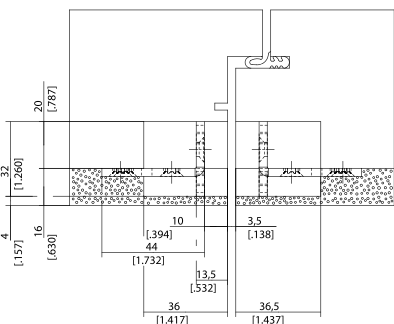
Claddings up to 16 mm (0.630")	TE 640 3D BW/16
--------------------------------	-----------------

Claddings up to 20 mm (0.787")	TE 640 3D BW/20
--------------------------------	-----------------

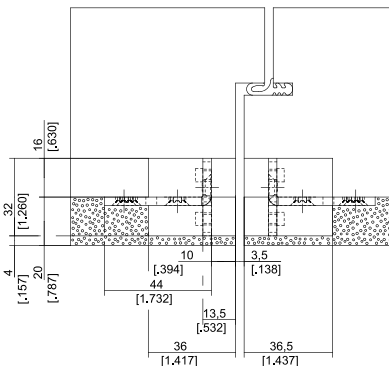
Detailed information in our PRODUCTSELECTOR at [www.simonswerk-usa.com](http://www.simonswerk-usa.com).



wood / aluminum system



claddings up to 16 mm



claddings up to 20 mm