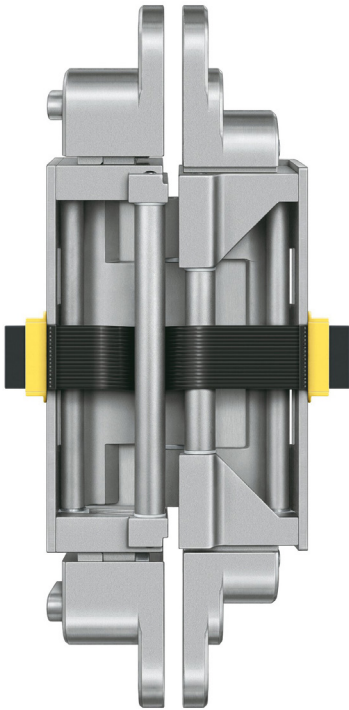
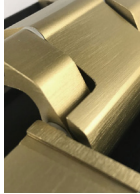
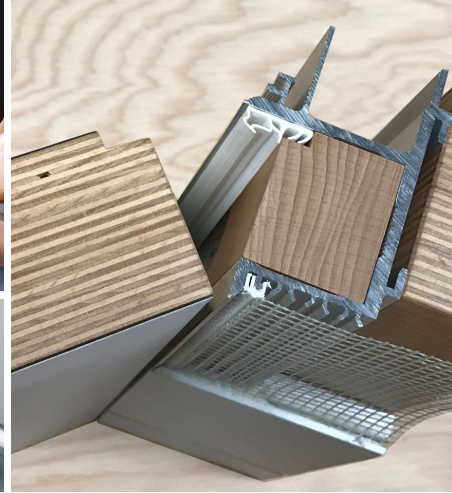


**B — W**



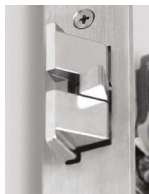
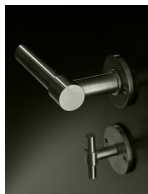
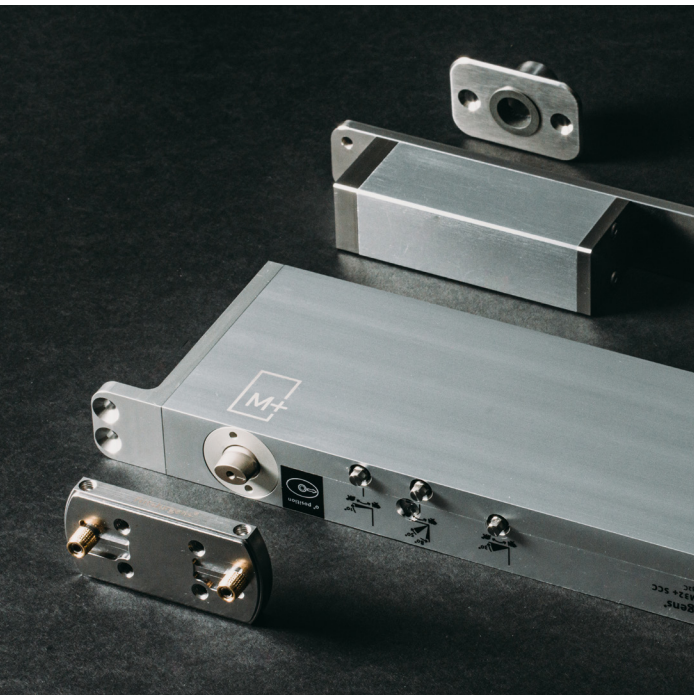
## BRIDGEPORT WORLDWIDE

Building beautiful spaces is difficult.

Bridgeport Worldwide is recognized in North America for sourcing best-in-class architectural hardware products from around the globe and distributing them through the supply chain to help the best designers and builders overcome the obstacles they face in delivering high-performance built environments.

Our team is a vital conduit between the manufacturers and the dozen market segments we serve, providing the high level of support everyone requires to keep the project on track. Whether a residential showroom, door and window OEM, or a commercial hardware dealer, we leverage the close relationships with our partners, along with our expertise and systems, to ensure that the appropriate solution is specified, delivered, and integrated successfully into the project.

knowledgeable



## KEEPING MAKERS MAKING

We are not here to sell everything to everyone. In our world, the value of a proven brand rules. There are no second chances for our customers who are often discovering these innovative products for the first time. Our focus is in understanding deeply the needs of every segment we serve and preparing and presenting comprehensive door solutions that work beautifully together. Keeping everyone on track for their own success is how we measure ours.

distributors of high-performance



## MOVING THE KNOW-HOW

It's not enough to have great product on the shelves. We also move and manage the information that's needed to effectively introduce and support our partners' unique offerings in the North American market. We do this while providing them critical feedback from our customers that can inspire innovation and improve their level of service. We've seen the positive impact that clear, accurate, and relevant information can have on building a brand.

architectural hardware

# FEATURED PARTNERS

## **FritsJurgens**, The Netherlands

Revolutionary pivot hinge systems and accessories. Making pivot doors essential.

## **Simonswerk**, Germany

World leader in commercial grade adjustable hinges. Makers of TECTUS 3D hinges.

## **FORMANI**, The Netherlands

Total concept collections of luxury designer architectural hardware for modern doors.

## **Halliday+Baillie**, New Zealand

The widest-range of flush hardware solutions, stair rail brackets, doorstops, and door pulls.

## **Planet**, Switzerland

Expansive range of high-performance drop seal solutions for wood, metal and glass.

## **FUHR**, Germany

Setting the standard for versatility and quality in multipoint locking systems.

## **d line**, Denmark

Iconic door hardware, bath accessories, and sanitary panels in 316 stainless steel.

## **CES Gruppe**, Germany

Leading innovator of mechanical and electronic cylinders and security systems.

## **AGS Systems**, Italy

Innovative frameless door systems for and skirting board profiles.

## **Accurate**, United States

World-class commercial-grade mortise locks, sliding, glass, and other hardware.

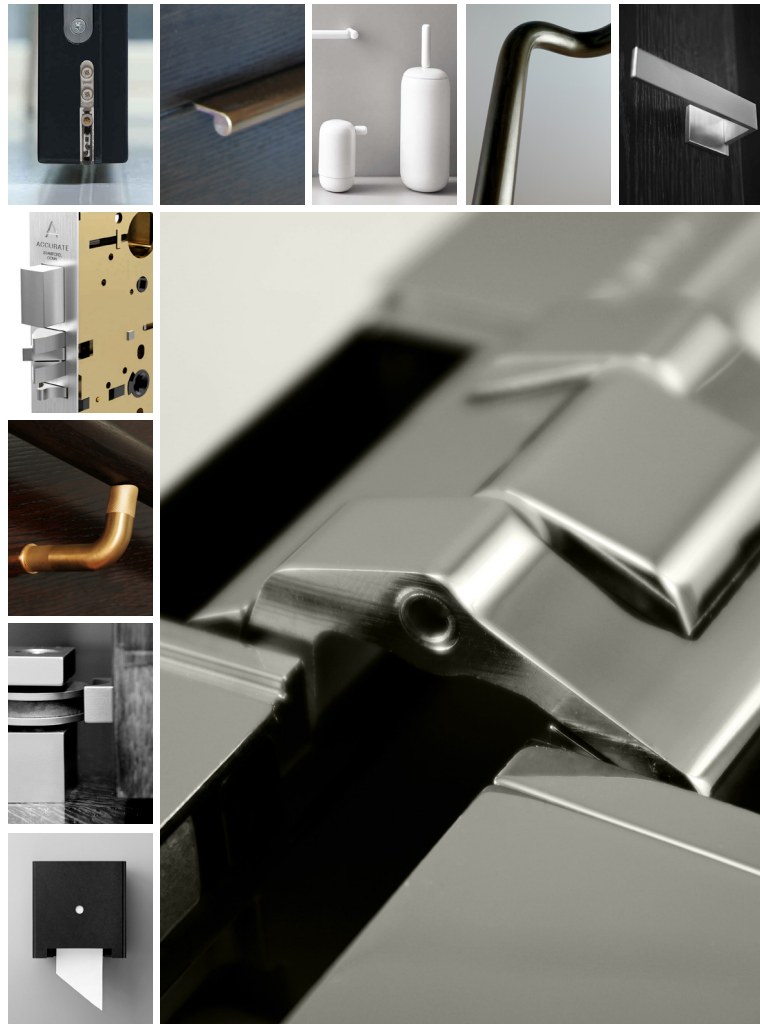


## WHO WE SERVE

Overseas manufacturers, dealers and distributors of all sizes, OEMs and door fabricators, professional building suppliers, and the architects and specifiers that discover and welcome new solutions into their designs—these are our partners in building a more beautiful world.

# GET INVOLVED

Bridgeport Worldwide is an established and fast-growing wholesale master distributor. We are always looking for great new products as well as new talent to bring onto our dynamic and passionate team. We want to hear from you if you'd like to engage with a company that is keeping makers making.



BRIDGEPORT WORLDWIDE

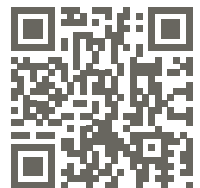
+1-800-362-1484

[bridgeportworldwide.com](http://bridgeportworldwide.com)

[info@bridgeportworldwide.com](mailto:info@bridgeportworldwide.com)

840 Railroad Avenue  
Bridgeport, CT 06605 USA

LEARN MORE



KEEPING **MAKERS** MAKING