



KEYPAD | BLE

# Curve™

## Iconic Design. Modern Security.

A model of modern design and a game changer in storage security, Digilock's most popular lock is back, upgraded with the latest advanced technology. Perfect for even the most demanding environments, Curve modernizes any space with its iconic design and high-tech capabilities.

## Digilock®

---

# Wire-free retrofit with ease.



Ultra slim surface mount



Motorized deadbolt or deadlatch



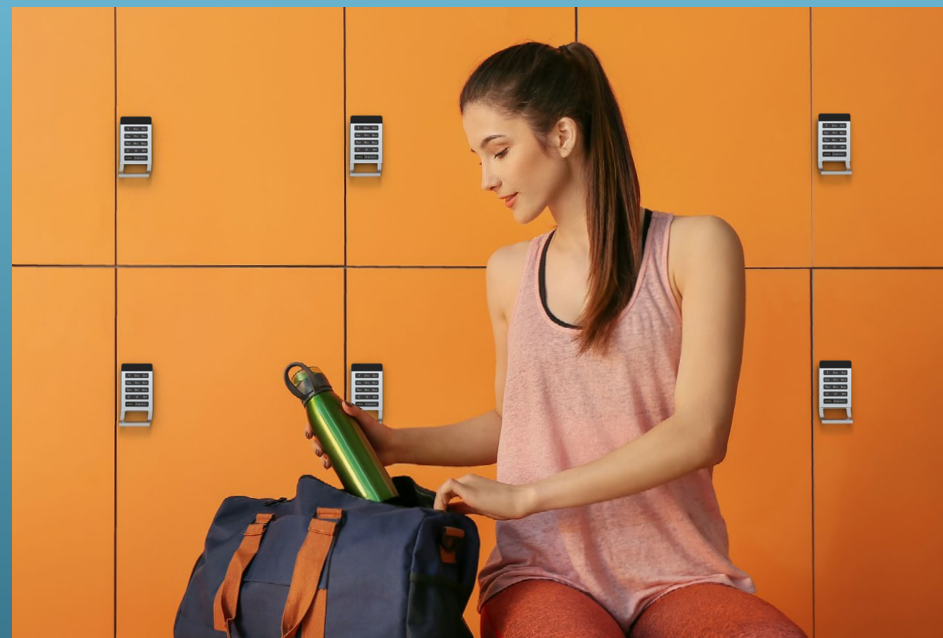
IP55 rated, FCC, CE, and IC certified



Battery-powered for easy wire-free installation



2-year warranty





# Access Options



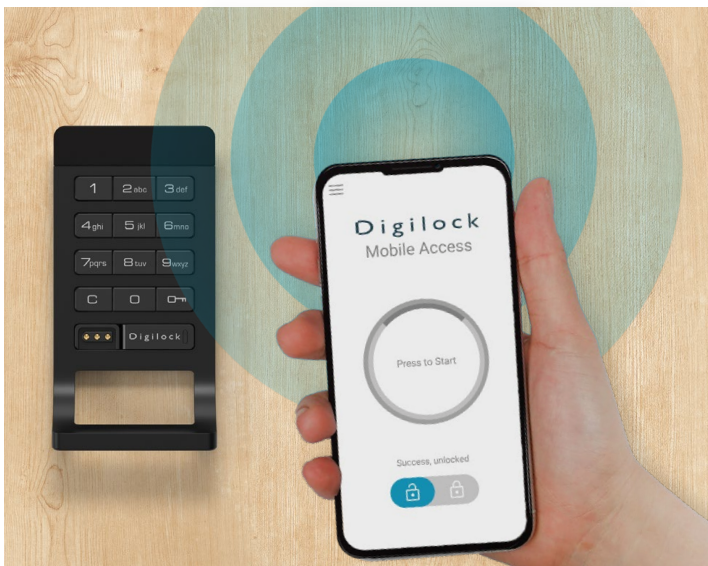
## SHARED USE

A simple day-use solution, shared use functionality lets the user select any available storage space and present a mobile credential or enter any 4-7-digit code to lock and the same mobile credential or code to unlock a Curve unit. When the current user is done and the storage space is vacated, Curve is ready for the next user and mobile credential or code.



## ASSIGNED USE

If you need to assign storage for a longer period of time, assigned use lets management program single or multiple mobile credentials or codes to the lock for the user(s). Each user presents the assigned mobile credential or enters the assigned code to unlock a Curve unit. Then the auto-relock feature is activated requiring the user to simply shut the door.



## MOBILE CREDENTIAL

Wireless connectivity through BLE (Bluetooth Low Energy)



## KEYPAD CODE

Create a 4-7 digit code to lock and unlock



# Dependable security for demanding environments.

- All-metal housing
- Wire-free installation
- Simple no-drill retrofit
- Auto unlock
- Visual and audible indicators
- Adaptable to multiple door thicknesses
- Accessible/ADA options



# Customize Your Lock System

Diverse locking options for every need.



## FINISH

Brushed Nickel or Matte Black



## REAR UNIT CONNECTION

Cable or Pin



## LOCK MECHANISM

Deadlatch or Deadbolt

# Choose Your Lock Management System

Digilock offers multiple options to accommodate a range of facilities and budgets.

## BASIC

An electronic key system for reliable and cost-effective management override, security, and flexibility.

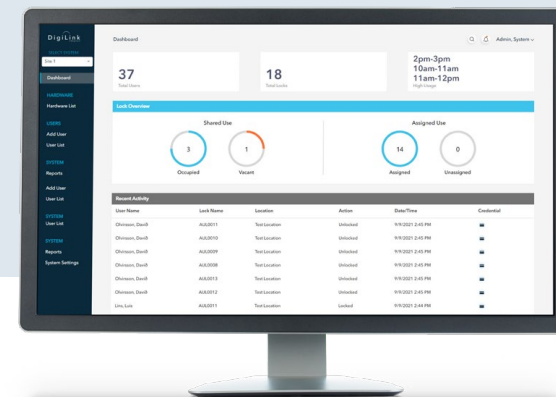
- Assign up to 6 manager credentials per system
- Assign up to 20 different users per lock
- Management override access
- Electronic keys provide external power against battery failure



## NETWORKED

Proprietary DigiLink® cloud-based software lets you enjoy the convenience of remote management.

- Remotely manage access, locks, and users
- Assign or remove credentials instantly
- Custom dashboard for ultimate visibility, responsiveness, and reporting
- View audit trail and usage data analytics reports



# EXPLORE MORE DIGILOCK® LOCKS

## ELECTRONIC

## HARDWIRED

## MECHANICAL



Curve™

### Management

- ☒ Networked
- ☒ Advanced
- ☒ Basic
- ☐ Electronic Flex Key

### Locking Mechanism

- ☒ Motorized
- ☐ Manual

### Access

- ☒ Mobile Credential
- ☒ RFID
- ☒ Keypad
- ☐ Dial Combination

### Functionality

- ☒ Shared Use
- ☒ Assigned Use
- ☒ Parcel Pickup Mode\*
- ☒ Reservation Mode\*



Aspire™

### Management

- ☒ Networked
- ☒ Advanced
- ☒ Basic
- ☐ Electronic Flex Key

### Locking Mechanism

- ☒ Motorized
- ☐ Manual

### Access

- ☒ Mobile Credential
- ☒ RFID
- ☒ Keypad
- ☐ Dial Combination

### Functionality

- ☒ Shared Use
- ☒ Assigned Use
- ☒ Parcel Pickup Mode\*
- ☒ Reservation Mode\*



Versa™

### Management

- ☒ Networked
- ☒ Advanced
- ☒ Basic
- ☐ Electronic Flex Key

### Locking Mechanism

- ☐ Motorized
- ☒ Manual

### Access

- ☒ Mobile Credential
- ☒ RFID
- ☒ Keypad
- ☐ Dial Combination

### Functionality

- ☒ Shared Use
- ☒ Assigned Use
- ☒ Parcel Pickup Mode\*
- ☒ Reservation Mode\*



Orbit™

### Management

- ☒ Networked
- ☒ Advanced
- ☒ Basic
- ☐ Electronic Flex Key

### Locking Mechanism

- ☒ Motorized
- ☐ Manual

### Access

- ☒ Mobile Credential
- ☒ RFID
- ☐ Keypad
- ☐ Dial Combination

### Functionality

- ☒ Shared Use
- ☒ Assigned Use
- ☒ Parcel Pickup Mode\*
- ☒ Reservation Mode\*



Pivot™

### Management

- ☒ Networked
- ☐ Advanced
- ☒ Basic
- ☐ Electronic Flex Key

### Locking Mechanism

- ☒ Motorized
- ☐ Manual

### Access

- ☒ Mobile Credential
- ☒ RFID
- ☒ Keypad (via Kiosk)
- ☐ Dial Combination

### Functionality

- ☒ Shared Use
- ☒ Assigned Use
- ☒ Parcel Pickup Mode\*
- ☒ Reservation Mode\*



Cleo™

### Management

- ☐ Networked
- ☐ Advanced
- ☐ Basic
- ☒ Electronic Flex Key

### Locking Mechanism

- ☐ Motorized
- ☒ Manual

### Access

- ☐ Mobile Credential
- ☐ RFID
- ☐ Keypad
- ☒ Dial Combination

### Functionality

- ☒ Shared Use
- ☒ Assigned Use
- ☐ Parcel Pickup Mode\*
- ☐ Reservation Mode\*

Speak to a Digilock representative for more information on the lock option that is right for you.

\*Networked only

# ABOUT DIGILOCK®

## A Model of Reliability

Founded in Northern California in 1981, Digilock is recognized as the global leader in keyless lock solutions, delivering more than 40 years of proven performance and pioneering 290 utility and design patents.

As storage security has evolved from metal padlocks to high tech advancements, Digilock has maintained its original mission to provide smarter solutions, simplified security, and unparalleled consumer confidence.

## Engineered for Anywhere

From inspiration to installation, we partner with our customers in a wide variety of industries to ensure that their facilities offer the latest in storage security solutions.

- Workplace
- Healthcare
- Hospitality
- Retail
- Manufacturing
- Government

## OUR CORE VALUES



### Innovation

Founded on innovative thinking and ground-breaking products, Digilock continues to expand and redefine what's possible in secure storage.



### Service

Everything we make is backed by lifetime product support. When you have a question there will always be a real-life Digilock expert to give you the answer.



### Partnership

Good relationships make happy customers, create better products, and keep Digilock at the forefront of the industry.



### Dependability

There's a reason customers have relied on Digilock for decades. We promise the same ironclad protection from the first lock to the millionth.



# CONTACT US



## **DIGILOCK AMERICAS**

1 Willowbrook Court  
Petaluma, CA 94954  
[sales@digilock.com](mailto:sales@digilock.com)  
Telephone **+1 800 989 0201**



## **DIGILOCK EUROPE BV**

Schillingweg 22  
2153 PL Nieuw-Vennep  
The Netherlands  
[sales@digilock.eu](mailto:sales@digilock.eu)  
Telephone **+31 0 20 303 3060**



## **DIGILOCK HONG KONG**

Flat B, 27th Floor Grandion Plaza  
No. 932 Cheung Sha Wan Road  
Lai Chi Kok, Kowloon, Hong Kong  
[sales@digilock.asia](mailto:sales@digilock.asia)  
Telephone **+852 2776 0800**