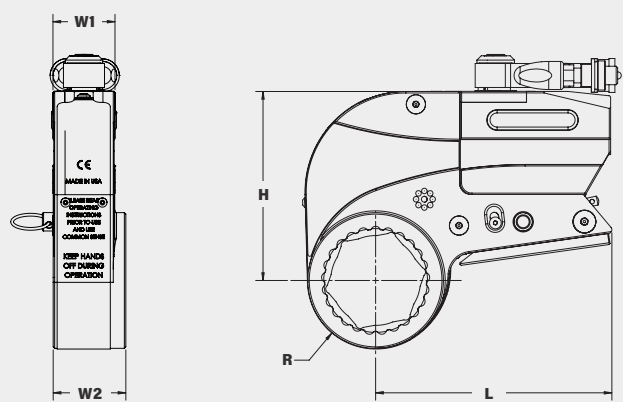
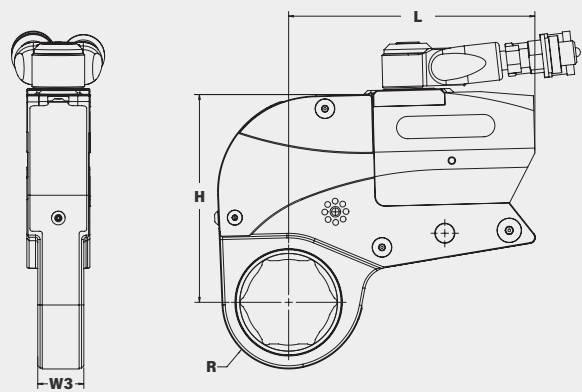


FULL SPECIFICATIONS

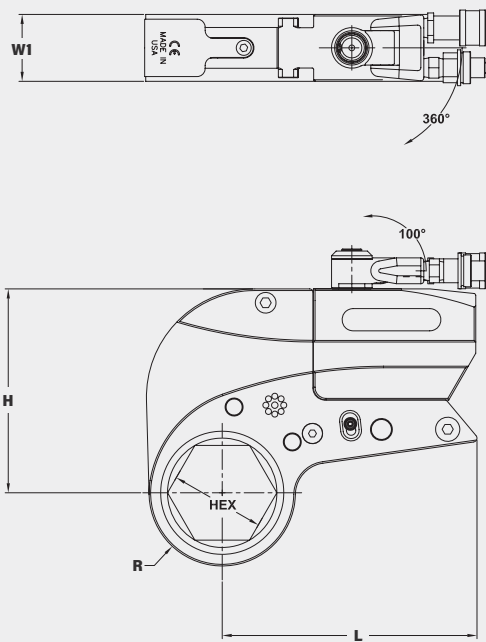
WASHER LINK



SLIM LINK



STANDARD LINK

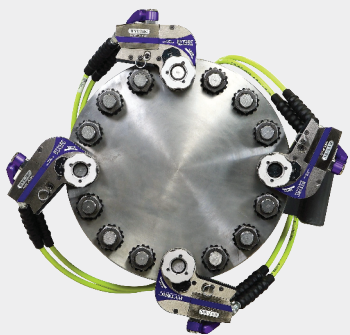


LEGEND: H = HEIGHT W1 = STANDARD WIDTH W2 = ONE-SIDED WASHER PLATE WIDTH W3 = SLIM WIDTH L = LENGTH R = RADIUS

MODEL NUMBERS	H	W1	W2	W3	L	R		POWERHEAD WEIGHT	TORQUE	
IMPERIAL	in.					in. (Min)	in. (Max)	lbs.	ft.-lbs. (Min)	ft.-lbs. (Max)
STEALTH - 2	4.21	1.25	1.51	-	5.53	1.03	1.76	3.99	278	1,869
STEALTH - 4	5.43	1.67	1.93	1.22	6.56	1.32	2.32	4.30	604	4,020
STEALTH - 8	6.40	2.10	2.48	1.45	8.00	1.77	2.89	6.70	1,199	7,984
STEALTH - 14	7.94	2.50	2.96	-	9.35	2.33	3.47	10.40	2,105	14,255
STEALTH - 22	9.18	2.91	-	-	10.79	2.62	3.87	15.40	3,250	21,875
STEALTH - 36	10.81	3.41	-	-	12.71	3.07	4.80	24.10	4,917	34,722

METRIC	mm					mm (Min)	mm (Max)	kg	Nm (Min)	Nm (Max)
STEALTH - 2	107	32	39	-	141	26	45	1.81	377	2534
STEALTH - 4	138	42	49	31	167	34	59	2.00	819	5450
STEALTH - 8	163	53	63	37	203	45	73	3.03	1625	10823
STEALTH - 14	202	64	75	-	237	59	88	4.71	2854	19324
STEALTH - 22	233	74	-	-	274	67	98	7.00	4406	29654
STEALTH - 36	275	87	-	-	323	78	122	10.93	6665	47069

HYDRAULIC



QUICK SPECS

Scan code for full specifications.

TORQUE RANGE

278 - 34,722 ft.-lbs. / 377 - 47069 Nm

HEIGHT

4.21 - 10.81 in. / 107 - 275 mm

LENGTH

5.53 - 12.71 in. / 141 - 323 mm

HEX SIZE

1.00 - 6.50 in. / 25 - 165 mm

STEALTH®
Hydraulic Torque Wrench

With a max torque output of approximately 35,000 ft.-lbs., the **STEALTH® Hydraulic Torque Wrench** is the most advanced low clearance, slim design tool on the market today, easily fitting where other tools can't. The dual piston powerhead provides you with unparalleled speed and power. It is one of the most versatile tools in the HYTORC lineup and is compatible with the HYTORC Washer and HYTORC Nut. The STEALTH can be used with the HYTORC Washer Link, Reaction Plate kits or any of the many available attachments. Some models of the STEALTH are available ATEX certified.

- LOCK ON RELEASE BUTTON
- REACTION WASHER COMPATIBLE
- HANDS-FREE OPERATION



Headquarters:
333 Route 17 N., Mahwah, NJ 07430
+1-201-512-9500

Contact:
1-800-FOR-HYTORC
info@hytorc.com

Online:
hytorc.com





STEALTH® COMPATIBLE ACCESSORIES OVERVIEW

1. Tool Retainer
2. Reaction Pad Assembly
3. Reducer Sleeve
4. Male Hex Adapter
5. Stack Socket
6. Bolt Thru Adapter
7. 71 Series Couplers (Quick Couplers)
8. SN-Style HYTORC Nut Link
9. ALCO Arm
10. HYTORC Washer Reaction Plate
11. HYTORC Integrated Washer STEALTH Link

THE INDUSTRY'S
MOST ADVANCED
LOW CLEARANCE
HYDRAULIC
BOLTING SYSTEM.

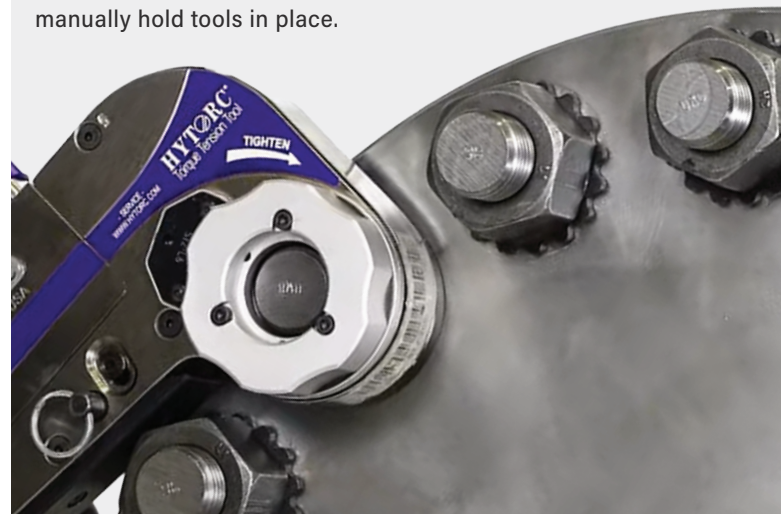
COMPATIBLE WITH WASHER PLATE

The washer-side tool plates of the **STEALTH®** are compatible with HYTORC Reaction Washers manufactured according to ASTM F3394. HYTORC Reaction Washers from 5/8" inch to 4" (M18 to M100 metric).



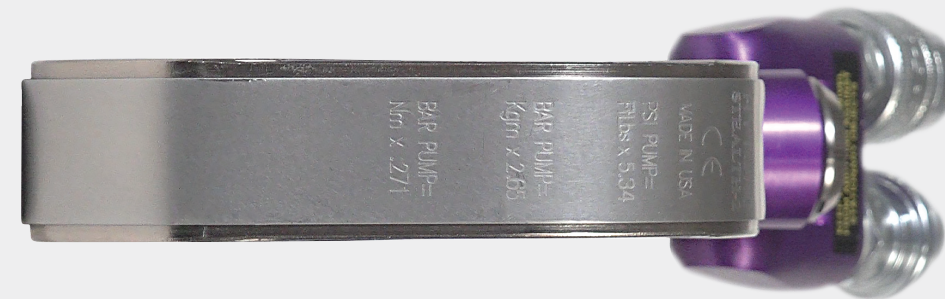
HANDS-FREE OPERATION

The **STEALTH tool** allows for completely hands-free bolting. The Tool Retainer allows for unparalleled hand safety, attaching the tools to each bolt and eliminating the need to manually hold tools in place.



ERGONOMIC AND SLIM DESIGN

The **STEALTH®** was the first industrial bolting system to feature a continuous slim body design that fits in even the tightest of places. It has a compact, ergonomic design with an integrated reaction pad and a Lock On Release Button. It's easily reversible - simply flip the tool over to change from tightening to loosening.



INTERCHANGEABLE LINKS

The **STEALTH®** has interchangeable ratchet links for hex, 12-point, and HYTORC Washer and HYTORC Nut. The uniswivel allows for the free movement and positioning of tools and hoses.

