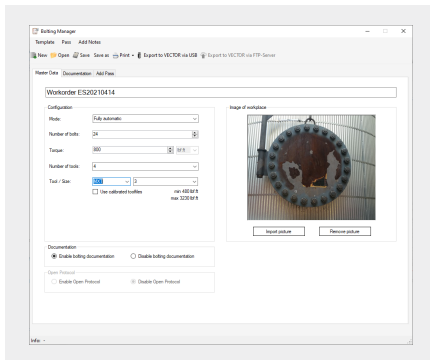




## HYTORC BOLTING MANAGER

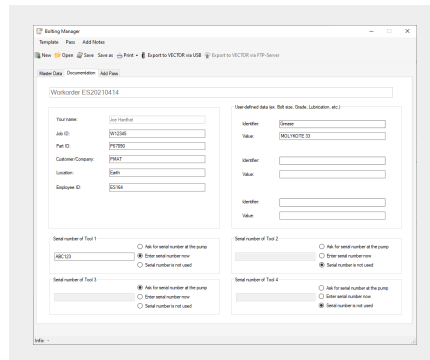
**HYTORC Bolting Manager** software makes it simpler than ever to create reusable bolting job templates and enhance workflow with the **HYTORC VECTOR Hydraulic Pump**. Create a library of templates that include bolting parameters, tool selection and a range of descriptive job fields for better quality control, documentation and reports. Easily export templates to the VECTOR Pump to enable step-by-step guided bolting instructions and manage comprehensive data capture.

### JOB TEMPLATES



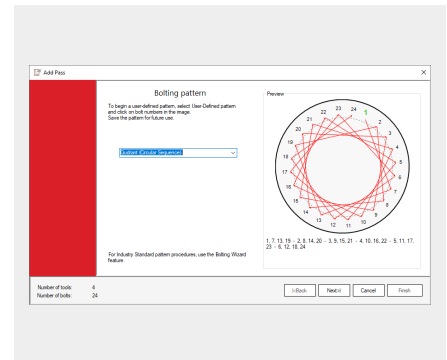
Simple user interface to define job parameters such as number of bolts, torque value, tool selection and operating mode. Templates are saved on the PC and exported to the VECTOR pump for pre-configured bolting operations.

### DATA MANAGEMENT

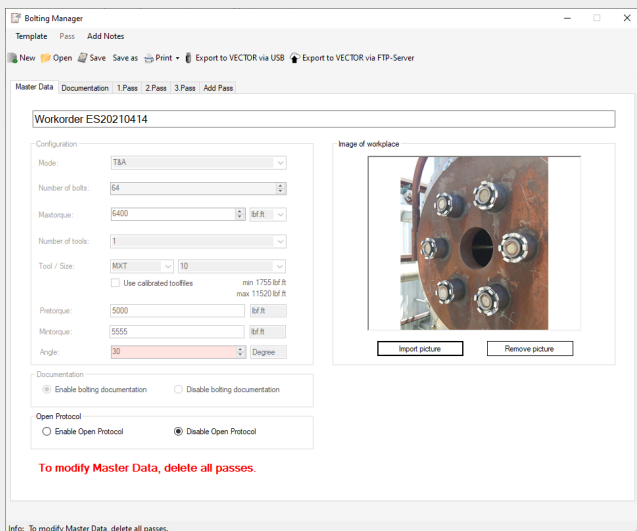


Fields to enter job information within each template to improve job documentation completeness and accuracy. Additional user-defined data fields provide flexibility for effective reporting.

### BOLTING PROCEDURE



Assistance in selecting any of HYTORC hydraulic tools, enabling up to four tools for each pass. Graphical user interface for a precise configuration of bolting patterns and multi-stage tightening procedures to improve job efficiency and quality.



**HYTORC Bolting Manager:** Supplements and enhances the use of the VECTOR- the world's most advanced hydraulic pump.

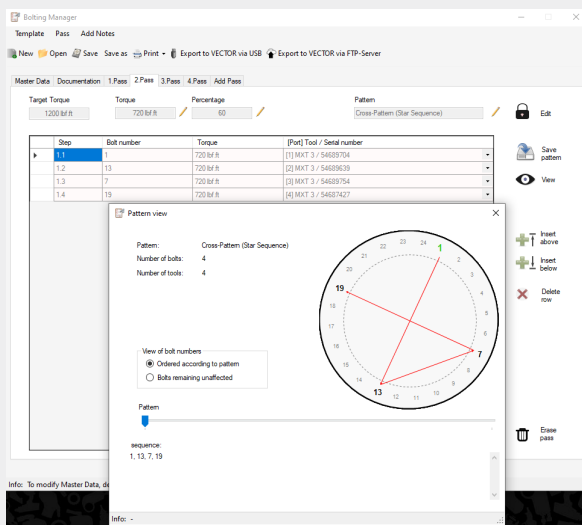
**User Friendly:** A graphical PC interface provides an easier alternative to the menu options available on the pump's LCD pendant remote control.

**Tools Selection:** Support for all HYTORC hydraulic tools (AVANTI, EDGE, ICE, MXT, MXT+, STEALTH, VERSA, XLCT, XLT) or user-defined tools. The App ensures proper tool selection for the job, allowing only suitable tools sizes.

**Multi-tool, Multi-pass:** Configure bolting parameters such as the number of bolts, torque level and operation mode. Graphically construct multi-stage bolting patterns with up to four tools.

**Documentation:** Enter job information and instructions on the PC to relay to the operator in the field; then collect detailed job data from the pump and generate fully documented reports.

**Premium Features:** A Premium version adds support for Torque & Angle operation, Open Protocol, file transfer to a server (FTP), a Wizard for automatic industry standard patterns and more.



## AVAILABLE FOR DOWNLOAD



**OS:** Windows® 10

**Languages:** English, German

**VECTOR Communication:** USB Flash Drive, FTP

**Software Updates:** Automatic

**Premium License:** Activation via USB dongle (included with HYTORC Torque and Angle Pump and Open Protocol VECTOR pumps)

**Availability:** Contact your HYTORC Authorized Service Dealer

HYTORC owns all content, copyrights, trademarks and patents in this document. © 2021 HYTORC. Any unauthorized use or distribution of any material from this document is strictly prohibited.

# HYTORC

**Headquarters:**  
333 Route 17 N., Mahwah, NJ 07430  
+1-201-512-9500

**Email:**  
info@hytorc.com

**Phone:**  
1-800-FOR-HYTORC

**Online:**  
hytorc.com