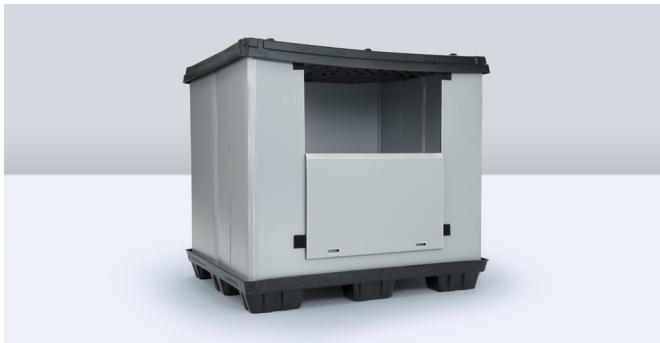


IntePro® & Coroplast® Packaging Products

Packaging products made from Inteplast materials are more durable than paper solutions, 100% recyclable, and highly customizable. Contact us for product inquiries on custom sizes and designs.



Coroplast Sleeve Pack

- 40" W x 48" L
- Optional door available
- 2- and 3-stack heights
- IntePro TITAN™ material



IntePro Agricultural Box

- Water resistant
- Patented locking system
- Recyclable
- Column- and Cross-stacked



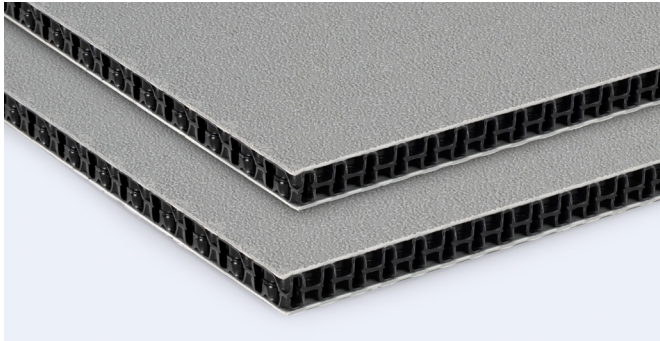
Nesting Tote

- Durable
- Water resistant
- Custom sizes and design
- Reusable



RSC and ALB Boxes

- Lasts 50-100 turns
- Water resistant
- Custom sizes and design
- Recyclable



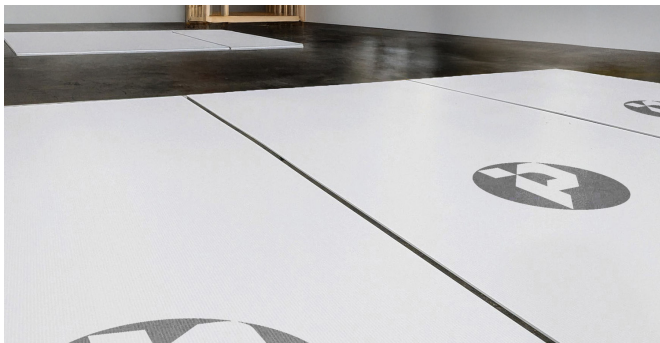
Embossed IntePro TITAN

- Honeycomb core
- Black and gray available
- Embossed surface



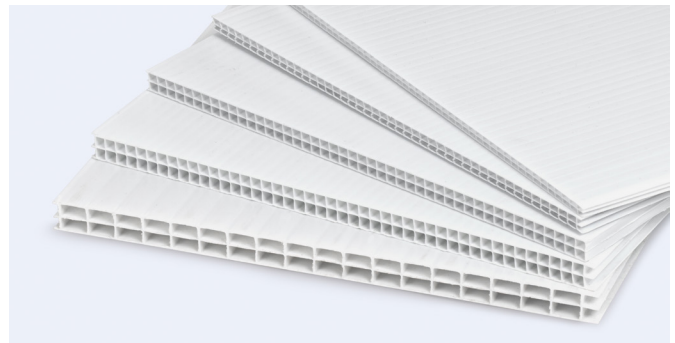
Coroplast Lamination

- Spunbond
- Evolon
- Tyvek
- Brushed fabric



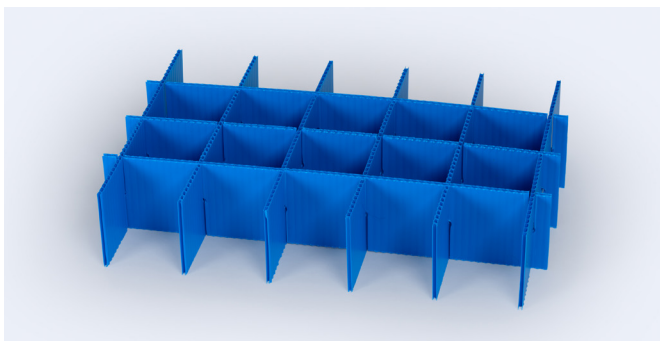
Surface Protector

- 4mm corrugated sheets
- Fire-retardant available
- Appliance and installation protection



IntePro Triple Wall

- Weather resistant
- Varied thicknesses available
- Superior strength compared to twin wall sheets



Dunnages and Dividers

- Customizable
- Durable
- Lightweight
- Recyclable



IntePro Rolled Material

- Wire protection
- Recyclable
- Corrugated sheets or single-faced TITAN available

TEL: 1-800-452-2117 (x1)
intepro@inteplast.com
www.inteplast.com

OFFICE: 9 Peach Tree Hill Rd., Livingston, NJ 07039
PLANT: 101 Inteplast Blvd., Lolita, TX 77971

Packaging Products May 2025