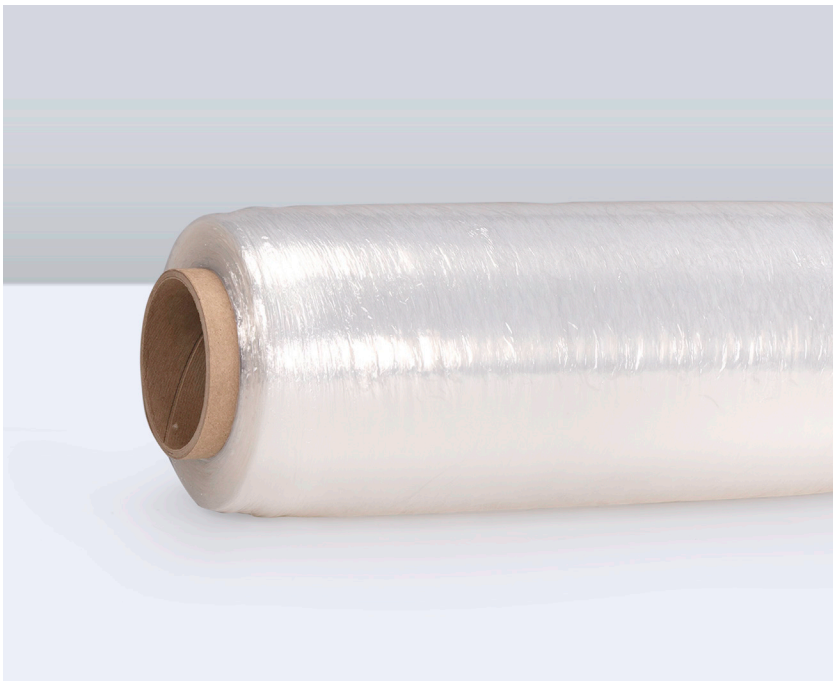


Pallet Lock Prestretch Hand Film

Inteplast's Pallet Lock[®] Prestretch hand film (PSB), one of the films in our Engineered Ultra High Performance Film Series, is formulated with superior puncture properties to grasp and hold corners on C type loads. Exceptional load-holding force, cling, clarity, and unchallenged neckdown for maximum load surface coverage.



Features & Benefits

- Unsurpassed puncture strength
- Unrivaled load-holding energy
- Superior cling
- Unchallenged neck-down
- Excellent clarity
- Proprietary quiet release
- Ergonomically designed
- Environmentally friendly
- Reduced cost/load
- ISO 9001:2015 Certified



Pallet Lock® Prestretch Hand Film - Boxed Product

| Product Code | Gauge (mil) | Width (inch) | Length (feet) | Wt. / Case (lbs) | Cases / Pallet | Wt. / Pallet (lbs) | Pallet Dimensions (inch) | Pallets / Truckload | Rolls / Truckload | Wt. / Truckload (lbs) |
|--------------------|-------------|--------------|---------------|------------------|----------------|--------------------|--------------------------|---------------------|-------------------|-----------------------|
| PSB0301501476AM-36 | 30 | 15 | 1,476 | 10.63 | 36 | 383 | 48 x 40 x 52.25 (H) | 52 | 7,488 | 19,918 |
| PSB0301701476AM-48 | 30 | 17 | 1,476 | 12.04 | 48 | 433 | 48 x 40 x 76 (H) | 26 | 4,992 | 15,026 |
| PSB0331501476AM-36 | 33 | 15 | 1,476 | 11.69 | 36 | 421 | 48 x 40 x 52.25 (H) | 52 | 7,488 | 21,892 |
| PSB0331701476AM-48 | 33 | 17 | 1,476 | 13.25 | 48 | 636 | 48 x 40 x 76 (H) | 26 | 4,992 | 16,536 |
| PSB0381501476AM-36 | 38 | 15 | 1,476 | 13.46 | 36 | 485 | 48 x 40 x 52.25 (H) | 52 | 7,488 | 25,160 |
| PSB0381701476AM-48 | 38 | 17 | 1,476 | 15.26 | 48 | 732 | 48 x 40 x 76 (H) | 26 | 4,992 | 19,020 |

Pallet Lock Prestretch Hand Film - Bulk Pack

| Product Code | Gauge (mil) | Width (inch) | Length (feet) | Wt. / Roll (lbs) | Rolls / Pallet | Wt. / Pallet (lbs) | Pallet Dimensions (inch) | Pallets / Truckload | Rolls / Truckload | Wt. / Truckload (lbs) |
|----------------------|-------------|--------------|---------------|------------------|----------------|--------------------|--------------------------|---------------------|-------------------|-----------------------|
| PSB0251501968AM-126P | 25 | 15 | 1,968 | 2.95 | 126 | 372 | 48 x 40 x 46.25 (H) | 52 | 6,552 | 19,341 |
| PSB0301301968AM-126P | 30 | 13 | 1,968 | 3.07 | 126 | 387 | 48 x 40 x 46.25 (H) | 52 | 6,552 | 20,115 |
| PSB0301501476AM-168P | 30 | 15 | 1,476 | 2.66 | 168 | 447 | 48 x 40 x 52.25 (H) | 52 | 8,736 | 23,238 |
| PSB0301501968AM-126P | 30 | 15 | 1,968 | 3.54 | 126 | 446 | 48 x 40 x 52.25 (H) | 52 | 6,552 | 23,194 |
| PSB0301701476AM-112P | 30 | 17 | 1,476 | 3.01 | 112 | 337 | 48 x 40 x 40.5 (H) | 52 | 5,824 | 17,530 |
| PSB0301701968AM-84P | 30 | 17 | 1,968 | 4.01 | 84 | 337 | 48 x 40 x 40.5 (H) | 52 | 4,368 | 17,516 |
| PSB0381501476AM-144P | 38 | 15 | 1,476 | 3.36 | 144 | 484 | 48 x 40 x 52.25 (H) | 52 | 7,488 | 25,160 |
| PSB0381701476AM-96P | 38 | 17 | 1,476 | 3.81 | 96 | 366 | 48 x 40 x 40.5 (H) | 52 | 4,992 | 19,020 |