

IntePro[®] Sustainer Corn Boxes



Features & Benefits

- Easy to handle and stack
- Water resistant
- 30% better stacking strength than previous designs
- Same dimension as standard RPC
- Aligned cooling holes allow seamless water drainage
- 1.3 bushel capacity (approx 48 ears)
- Quick-snap top for easy opening and closing
- One-piece base for added strength
- Customized wide handles for comfortable grip
- Patented locking system (Patent No. US9527622) for both cross-stacked and column-stacked patterns
- Made in the USA

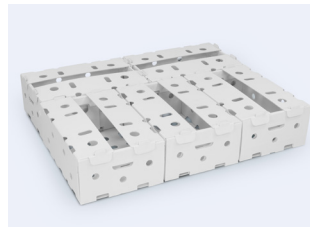
Patented locking system



Aligned drainage holes



Standard RPC size



1.3 Bushel capacity



IntePro[®]

TEL: 1-800-452-2117 (x1)
intepto@inteplast.com
www.inteplast.com

OFFICE: 9 Peach Tree Hill Rd., Livingston, NJ 07039
PLANT: 101 Inteplast Blvd., Lolita, TX 77971