



# TACTICAL ACCESS PROGRAM



## Tactical Access Program

Maxar's Tactical Access Program provides trusted defense, intelligence and commercial customers with direct downlink of Maxar and other commercial data provider (CDP) satellite data with low-latency image processing, georegistration and analytics at the tactical edge in time-dominant applications.

The program starts with our antenna- and receiver-adaptable, uniquely compact, ultra transportable and fully customizable Mobile Access Terminal ground station—giving customers the ability to directly downlink, process and analyze commercial satellite imagery from multiple CDPs at any remote or disconnected location on Earth.

### Features and benefits:

#### Ultra capable

Rapid access to commercial imagery for direct downlink from both electro-optical (EO) and synthetic aperture radar (SAR) assets across a range of CDPs (Maxar and non-Maxar)

#### Mobile

Small and light enough to be transported as checked luggage

#### Fast

Deploys for operations in less than one hour including antenna setup

#### Low latency

Imagery in hand in under 15 minutes

#### Operational anywhere

Available in disconnected, intermittent and limited-bandwidth (DIL) environments

#### Containerized design

Cloud-agnostic architecture enables integration into customer hardware and software stacks and is operable in commercial cloud environments

#### Secure and resilient

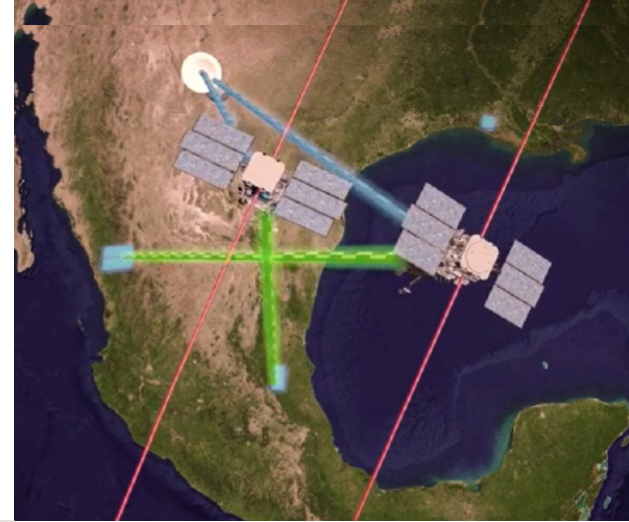
Fully functioning stand-alone ground station, with hardened version available upon request

#### Scalable and extensible

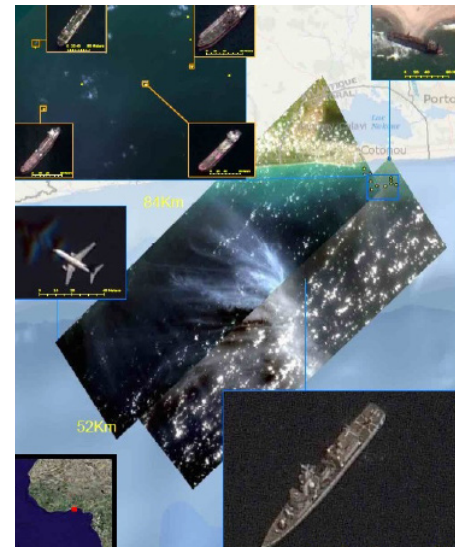
Tailorable modular design and modern architecture for stable and repeatable deployments including antenna, receiver, CDPs, data, and analytics

#### Evolving CDPs

Ongoing integration to offer the latest multisource imagery and analytic tools



### MULTICONSTELLATION COMMERCIAL IMAGERY



### ANTENNA AND RECEIVER ADAPTABLE



ADDITIONAL ANTENNA INTEGRATIONS PLANNED

# MAXAR

## Data and analytics tools

- Enhancing data analytics tools for full end-to-end workflows:
  - Additional mission feasibility services
  - Pre-positioned data, including persistent change detection and open remote sensing data, with terrain and volunteered geographic information
  - GPU-accelerated terrain and mobility analysis
  - Change and object detection

## Program options

Maxar's Tactical Access Program is a commercial unclassified offering that meets U.S. government cybersecurity requirements and can be tailored for international government customers. From raw data to analytics, the modular design and architecture are componentized for adaptable hardware, software or other solution that can be tailored to fit your needs:

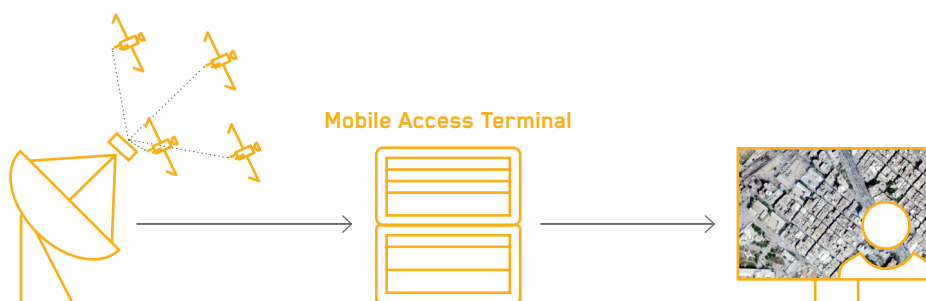
- 1.Hardware:** Maxar's Mobile Access Terminal is a transportable ground station system that can downlink, process and analyze CDP imagery. It is transportable by two people. It is source agnostic and configured to work with any antenna or custom provided software system.
- 2.Software:** Centralized dashboard for end-to-end system operation and status monitoring. Configurable to work with work with numerous antennas, receivers, CDPs and analytics capabilities.
- 3.Services:** Software and hardware maintenance and updates are included.
- 4.Solution:** Maxar can build custom hardware or software services and provide on-site field support representatives. Optional imagery subscriptions and support, including integration, delivery, training, operations and sustainability, are available.

## Tactical Access Program applications:

The innovative design supports a diverse set of defense and intelligence missions for timely visual information about ground, maritime and coastal situations.

- |  |   |
|--|---|
| ■ Target identification and monitoring | ■ Tactical intelligence fusion                  |
| ■ Targeting and Fires                  | ■ Force protection                              |
| ■ Mission analysis and planning        | ■ Combat Search and Rescue (CSAR)               |
| ■ Tactical maneuver support            | ■ Maritime domain awareness and interdiction    |
| ■ Battle Damage Assessment (BDA)       | ■ Non-Combatant Evacuation Operations (NEO)     |
| ■ Multi-sensor tip-and-cue             | ■ Humanitarian Aid and Disaster Response (HADR) |

## Tactical Access Program Concept of Operations (CONOPS)



## IMAGERY

Mobile Access Terminal downlinks and processes commercial imagery from multiple sources. Examples of commercial providers who have been integrated to meet customer needs are shown below.



WorldView-1



WorldView-2



WorldView-3

# MAXAR