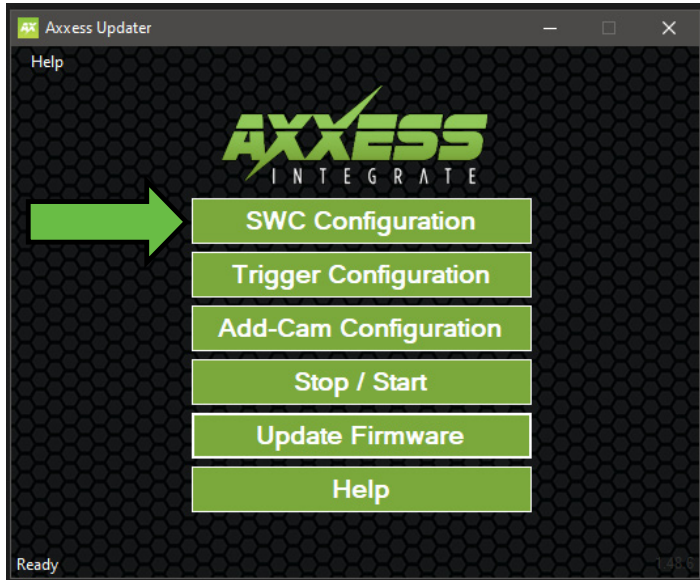
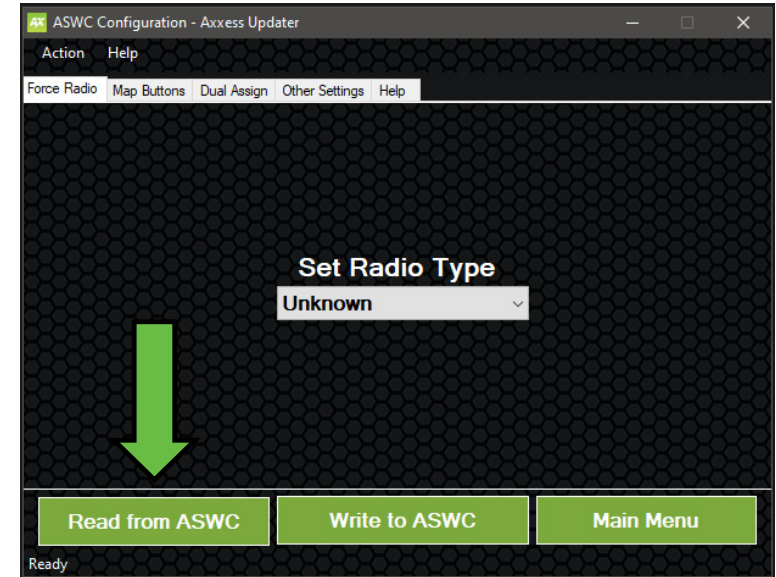


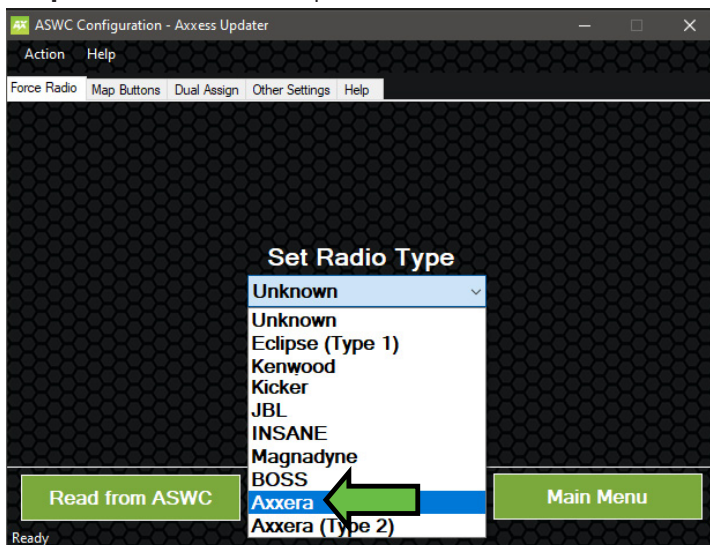
**Step 1.** Connect the interface and click on **“SWC Configuration”**.



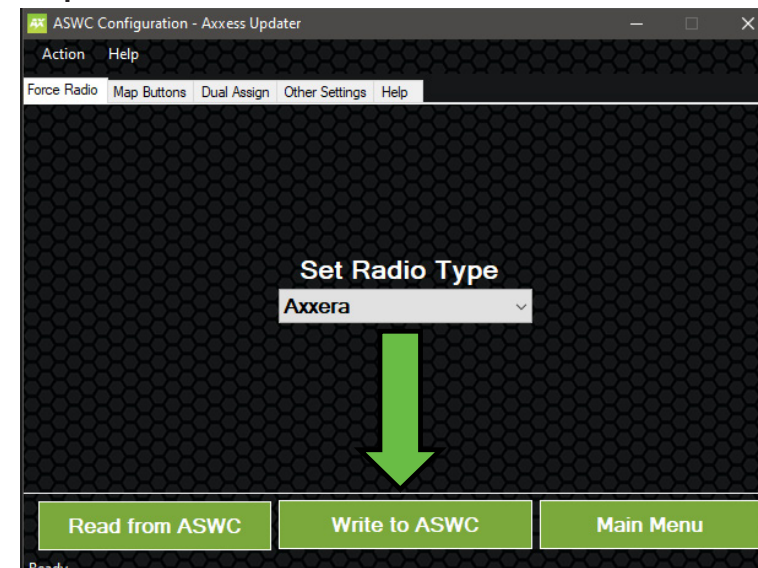
**Step 2.** Click on the **“Read from ASWC”**.



**Step 3.** Click on the drop down box and select **“Axxera”** (not Axxera Type 2).



**Step 4.** Click **“Write to ASWC”**.



**Step 5.)** Take the Interface back to the vehicle, if it has not been programmed before, you will need to refer to the vehicle specific instructions for programming.

**Note:** Vehicle specific instructions are available from [www.axxessupdater.com](http://www.axxessupdater.com) or from the Axxess Updater Mobile App.

**Step 6.)** With the interface programmed to the vehicle, Go in to the General Settings on the radio, find the Steering Wheel Control menu, and change it from “Preset” to “Custom” then tap the wrench icon.

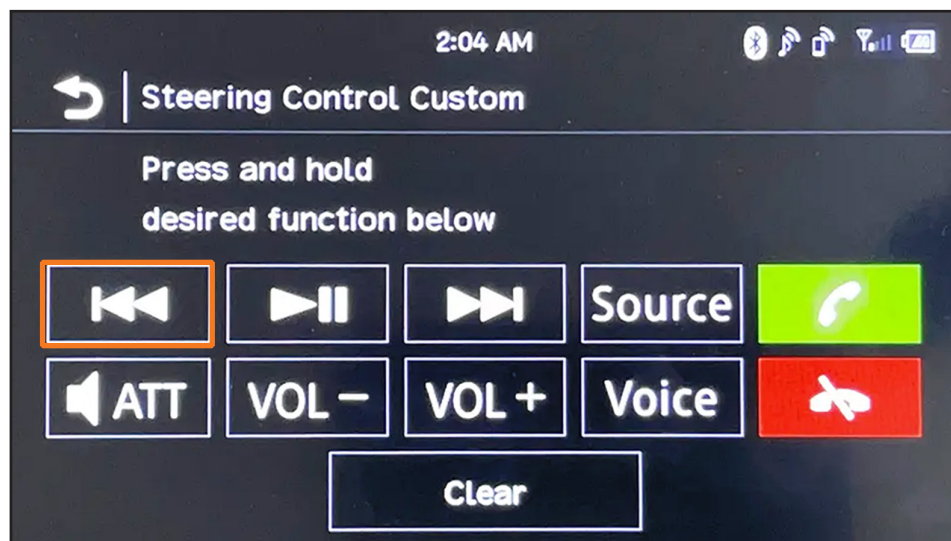


Figure A

**Step 7.)** Push and hold the desired function on the screen for two seconds, then release, the box should stay illuminated in white. At this time, push and hold the corresponding button on the steering wheel. You will get an **Orange** border around the button if it programs successfully. (Figure A) You will need to do this for each function.

**Note:** If a function does not program successfully, you may need to change the radio type on the interface to one of the other options highlighted in yellow below. (Fig. B)

Radio #	Radio	Radio #	Radio
1	Eclipse (type 1)	13	LG
2	Kenwood	14	Parrot
3	Clarion (type 1)	15	XITE
4	Sony / Dual	16	Philips
5	JVC	17	Kicker
6	Pioneer / Jensen	18	JBL
7	Alpine	19	Insane
8	Visteon	20	Magnadyne
9	Valor	21	Boss
10	Insane Audio	22	Axxera
11	Metra OE	23	Axxera (type 2)
12	Eclipse (type 2)	24	Alpine (type 2)

Figure B