



Metra[®]
Marine

OUTFIT YOUR MARINE VESSEL

FUN | SAFETY | CONVENIENCE

MARINE

LED LIGHTBARS

TRANSOM LED LIGHTS

RGB ACCENT LIGHTS

LED CUBE LIGHTS

LED STRIP LIGHTS



CURVED

HE-MDRC30
 DUAL ROW
LED LIGHTBAR

► 30 INCH

- + Wattage: 180W
- + Raw Lumens: 14400lm
- + Lux @ 10m: 625
- + Current Consumption @ 13.8V: 9.5A
- + IP Rating: IP67
- + Hole Dimensions:
Bracket Turned In: 31"
Brackets Turned Out: 33.5"



34.88"W x 4.8"H

HE-MDRC42
 DUAL ROW
LED LIGHTBAR

► 42 INCH

- + Wattage: 240W
- + Raw Lumens: 19200lm
- + Lux @ 10m: 780
- + Current Consumption @ 13.8V: 12A
- + IP Rating: IP67
- + Hole Dimensions:
Bracket Turned In: 41"
Brackets Turned Out: 43.5"



44.76"W x 4.8"H

INPUT VOLTAGE: 10-30V DC • **COLOR TEMPERATURE:** 6000K • **HOUSING MATERIAL:** DIE-CAST ALUMINUM • **COLOR:** WHITE COATING WITH UV LENS MATERIAL: POLYCARBONATE • **HARDWARE:** STAINLESS STEEL 316 • **ELECTRONICS:** INTEGRATED-EPOXY ENCAPSULATED MOUNTING BRACKET: DIE-CAST ALUMINUM • **OPERATING TEMPERATURE:** -40°F TO +140°F • **PROTECTION:** REVERSE POLARITY

COMMON FEATURES



ACCENT LIGHTS



HE-8MLRGBK RGB LED ACCENT LIGHT KIT

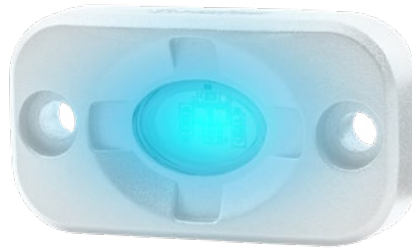
► 3 LED ► 8 PODS ► 1.5" x 3"

Complete kit to light up our boat. (8) HE-MLIRGB RGB accent lights and the HE-CBRGB control box will give you accent lighting where you want it.

- + LEDs Per Pod: (3) 3-watt each (9W)
- + Raw Lumens: 720lm
- + IP Rating: IP68
- + HE-CBRGB controller included



RGB LEDS



HE-MLIRGB RGB LED ACCENT LIGHT

► 3 LED ► RGB POD ► 1.5" x 3"

- + LEDs: (3) 3-watt each (9W)
- + Raw Lumens: 720lm
- + IP Rating: IP68
- + Beam Pattern: 120° Flood
- + Works with HE-RGB-CB (sold separately)
- + Pod sold individually



RGB LEDS

ML-FMRGB RGB LED ACCENT LIGHT

► 3 LED ► 1 POD

- + (3) 3-watt LEDs
- + Raw Lumens: 720lm
- + Beam Pattern: 120° Flood
- + Pod sold individually
- + Works with HE-RGB-CB (sold separately)

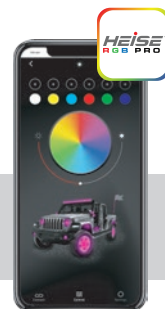


RGB LEDS



HEISE CONNECT FREE APP

THIS APP ALLOWS ENDLESS COLOR CHOICES AND EVEN ALLOWS YOU TO STORE YOUR CUSTOM MADE COLORS. PRESET FLASH PATTERNS, LIGHT FLASHING TO YOUR MUSIC IN YOUR LIBRARY, EVEN HAVE THE LIGHTS TURN ON AND OFF AT SELECTED TIMES.



HE-ML1 WHITE HE-ML1B BLUE ACCENT LIGHT

► 3 LED ► SINGLE COLOR ► 1.5" x 3"

- + White LED: (3) 5-watt LEDs / Wattage: 15W / Raw Lumens: 1200lm
- + Blue LED: (3) 3-watt LEDs / Wattage: 9W / Raw Lumens: 720lm
- + Beam Pattern: 120° Flood
- + Mounting: Surface - 2 rubber bases included
- + Pod sold individually



BLUE



HE-ML1DIV ACCENT LIGHTING COVER

- + This Accent Lighting Cover fits over accent lights (The HE-ML1 series, HE-MLRGB, and the multi-light kits HE-4MLRGBK/ HE-8MLRGBK)
- + Can be positioned to divert light down for accent lighting or can be used to diffuse the strength of the lights when direct lighting is not needed



COMMON FEATURES

INPUT VOLTAGE: 10-30V DC • HOUSING MATERIAL: WHITE DIE-CAST ALUMINUM • COLOR: WHITE COATING WITH UV
LENS MATERIAL: POLYCARBONATE • HARDWARE: STAINLESS STEEL 316 MOUNTING: SURFACE
OPERATING TEMPERATURE: -40°F TO +140°F • BEAM PATTERN: FLOOD 120°



ML-AL2SS-W WHITE
ML-AL2SS-B BLUE
 STAINLESS STEEL BEZEL
ACCENT LIGHT

► 2 LED

- + Low current (0.03 amp total draw)
- + Universal application
- + Mini stainless steel accent lights
- + Corrosion-resistant tinned wire
- + Installation hardware included
- + IP rating: IP67



ML-AL2CL-W WHITE
ML-AL2CL-B BLUE
 CLEAR PLASTIC BEZEL
ACCENT LIGHT

► 2 LED

- + Low current (0.03 amp total draw)
- + Easy, universal 2-wire installation
- + Utility lights with high-impact plastic
- + Corrosion-resistant tinned wire
- + Installation hardware included
- + IP rating: IP67



ML-AL4CL-W WHITE
ML-AL4CL-B BLUE
 CHROME PLASTIC BEZEL
ACCENT LIGHT

► 4 LED

- + Low current (0.01 amp total draw)
- + Easy, universal 2-wire installation
- + Utility lights with high-impact plastic
- + Corrosion-resistant tinned wire
- + Installation hardware included
- + IP rating: IP67



ML-ALCK9-W WHITE
ML-ALCK9-B BLUE
 PLASTIC BEZEL

ACCENT LIGHT KIT

► 9 PACK

- + Low current (0.21 amp total draw)
- + Retail packed with "Try me" switch
- + 6 mini stainless steel accent lights
- + 3 utility lights with high-impact plastic
- + Corrosion-resistant tinned wire
- + Installation hardware included
- + IP rating: IP67





HE-RGB-CB HEISE CONNECT CONTROLLER

► RGB LED CONTROLLER

- + RGB LED controller
- + 24 color-changing patterns
- + Turn signal function (both left and right)
- + Brake function, DIY pattern function, and music sync function
- + App controlled (Heise Connect app) or via the included RF card remote
- + Max load 10A
- + Water-resistant Heise connector
- + Works with RGB LED products only
- + Can be grouped in the app with any Heise Connect controller (RGB, RGBW, and Chasing)



HE-PTRGB PIGTAIL ADAPTER

► RGB ACCENT PODS

- + Designed to wire the RGB accent pods into any 4-wire positive anode RGB controller like the Heise HE-RGBC-1, HE-RGBSAC-1, HE-WFRGBC-1, and HE-RFRGBC-1



HE-EXTRGB EXTENSION CABLE

► 10 FOOT

- + Designed to add an additional 10 feet of length to the accent pods which are already equipped with a 10 foot cable





RGB LEDs

H-RGB5MRK2

RGB STRIP LED LIGHT KIT

► 5050 RGB LEDs ► 5 METER

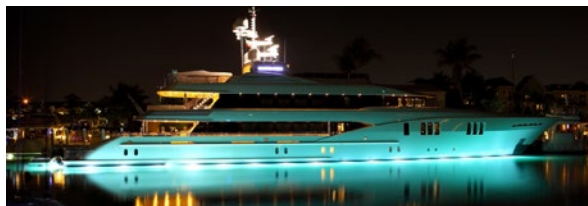
- + 5m (16.4FT) RGB 5050 LED strip
- + 5050 SMD LEDs at 60 LEDs per meter
- + One 24-key IR remote & RGB controller
- + 3 amp power supply
- + IP rating: IP65 water-resistant covering



ALUMINUM TRACK FOR STRIP LED LIGHTS

3FT SILVER ANODIZED

- + Aluminum surface and flush mount track available in both clear and frosted covers for use with LED strip lights
- + Provides decorative look and secure place to attach your LED strip lights
- + Flush mount requires a 5/8" wide and 1/4" deep opening
- + Hardware included



HE-ATCL CLEAR SURFACE



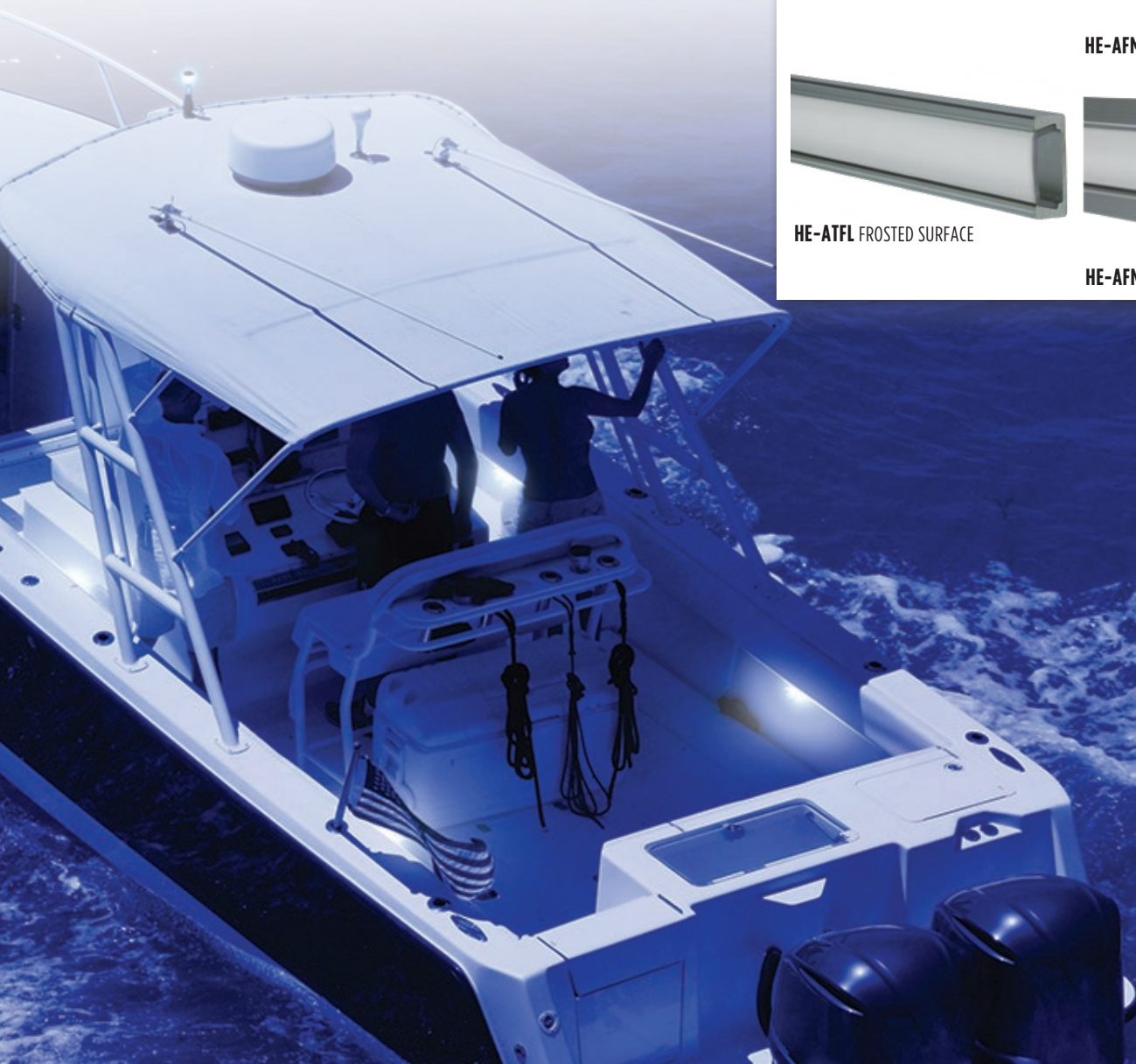
HE-AFMTCL CLEAR FLUSH



HE-ATFL FROSTED SURFACE



HE-AFMTFL FROSTED FLUSH



LED TRANSM LIGHTS



RGB LEDS



TRUE
WHITE LEDS

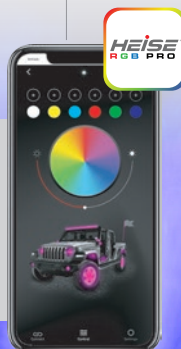
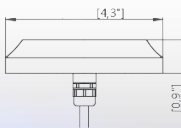
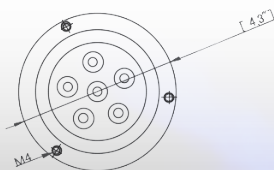
IMPROVED

ML-RGBW72W

RGBW UNDERWATER TRANSM LIGHT

► 6 12 WATT LEDS ► 5 WIRE RGBW

- + Input Voltage: 10-30V DC
- + IP Rating: IP68
- + Housing Material: Brass
- + Mounting: Surface



**ADDITIONAL
ACCESSORIES
(SOLD SEPARATELY)**

HE-RGBW-CB

► IP68 CONTROL BOX



**HEISE CONNECT
FREE APP**



LED WORK LIGHT

HE-WL1

LED LIGHT

► 3.625x2 INCH ► 33 LED

- + Wattage: 6.6W
- + Raw Lumens: 726lm
- + Lux @ 10m: 17
- + Beam Pattern: Flood 120°
- + Current Consumption @ 13.8V: .3A
- + Lens Design: Unique waffle

Modular design allows multiple lights to be connected together to form one long light



3.75"W x 3"H x .75"D



MPS-SW6 6-ZONE SWITCH PANEL

► 6 ZONES

- + Two control options
- + 6-button Carling-style switch
- + Individually fused circuit protection
- + Controlled via the MPS switch app on compatible smartphones or tablets
- + Single metal switch plate with hardware
- + Polaris® switch adapter

App Control Features

- + 2 strobe options: fast + double pulse patterns
- + Lighting can be synced with music
- + Adjustable brightness on each channel
- + Master On/Off switch
- + Each zone is independently controlled
- + Low EMI design

Specifications

- + Input Voltage: 9.5-15V
- + Power Handling: 700 Watts
- + Maximum Current: 60A
- + Control Box Material: ABS Plastic
- + Operating Temperature: -40°F - 302°F
- + Switch Size: 1.45" x 0.83"/Box size: 4.3" x 1.08"



HE-SWP8 SWITCH PANEL

► 8 GANG

- + Input Voltage: 12V-24V
- + Power Handling: 600-1200W
- + Maximum Current: 60A
- + Panel Material: Die-cast aluminum

- + Switched or momentary operation
- + Control Box Material: Die-cast aluminum
- + Control Box Cover: ABS plastic
- + Operating Temperature: - 40° F to 302° F

- + Panel Size: 4.53" x 0.59" x 2.60"
- + Circuit Box Size: 7.48" x 1.34" x 4.13"
- + 50 custom label decals

HE-SWP8C FITS HE-SWP8 FLUSH MOUNT CASE

- + Switch panel screws securely to the case box
- + Included snap on trim plate for a clean installation
- + Cut template and mounting hardware included





ML-AK8-10 10' MARINE AMP KIT

► 8 GAUGE ► SIDE-BY-SIDE WIRE

- + 10' red and yellow 8 AWG tinned side-by-side wire
- + 8 gauge ring terminal with shrink tube + logo, pre-terminated on each end of 2' red wire
- + 8 gauge ring terminal with shrink tube and logo, pre-terminated on 8' red wire
- + 8 gauge ring terminal with shrink tube and logo, pre-terminated on yellow wire
- + 18' blue 18 AWG tinned remote turn-on wire
- + 50 amp marine circuit breaker, IP67 rated, with stainless steel connection points for corrosion-resistance and ignition protected



ML-AK4-10 10' MARINE AMP KIT

► 4 GAUGE ► SIDE-BY-SIDE WIRE

- + 10' red and yellow 4 AWG tinned side-by-side wire
- + 4 gauge ring terminal with shrink tube + logo, pre-terminated on each end of 2' red wire
- + 4 gauge ring terminal with shrink tube and logo, pre-terminated on 8' red wire
- + 4 gauge ring terminal with shrink tube and logo, pre-terminated on yellow wire
- + 18' blue 18 AWG tinned remote turn-on wire
- + 100 amp marine circuit breaker, IP67 rated, with stainless steel connection points for corrosion-resistance and ignition protected



ML-AK8-20 20' MARINE AMP KIT

► 8 GAUGE ► SIDE-BY-SIDE WIRE

- + 20' red and yellow 8 AWG tinned side-by-side wire
- + 8 gauge ring terminal with shrink tube + logo, pre-terminated on each end of 2' red wire
- + 8 gauge ring terminal with shrink tube and logo, pre-terminated on 8' red wire
- + 8 gauge ring terminal with shrink tube and logo, pre-terminated on yellow wire
- + 18' blue 18 AWG tinned remote turn-on wire
- + 50 amp marine circuit breaker, IP67 rated, with stainless steel connection points for corrosion-resistance and ignition protected



ML-AK4-20 20' MARINE AMP KIT

► 4 GAUGE ► SIDE-BY-SIDE WIRE

- + 20' red and yellow 4 AWG tinned side-by-side wire
- + 4 gauge ring terminal with shrink tube + logo, pre-terminated on each end of 2' red wire
- + 4 gauge ring terminal with shrink tube and logo, pre-terminated on 8' red wire
- + 4 gauge ring terminal with shrink tube and logo, pre-terminated on yellow wire
- + 18' blue 18 AWG tinned remote turn-on wire
- + 100 amp marine circuit breaker, IP67 rated, with stainless steel connection points for corrosion-resistance and ignition protected

V10-AK1 1/0 AWG AMP KIT

► 5200W

V10-AK4 4 AWG AMP KIT

► 2100W

V10-AK8 8 AWG AMP KIT

► 800W

AMP INSTALLATION KITS

- + Meets CEA and ANSI specification for wire gauge
- + Fully tinned virgin copper construction
- + High strand count for maximum flexibility
- + BC-5W2 marine compliant RCA, speaker, power and ground wire
- + 18' blue 18 AWG tinned remote turn-on wire
- + Compact brass fusing and distribution



POWER & SPEAKER WIRE



ML-SPG4-100 POWER + GROUND WIRE

► 4 GAUGE ► SIDE-BY-SIDE WIRE

- + Red and yellow side-by-side
- + 4 AWG full tinned OFC multi-strand power wire
- + High strand count for maximum flexibility
- + BC-5W2 marine compliant
- + 100' spool



ML-SPG8-100 POWER + GROUND WIRE

► 8 GAUGE ► SIDE-BY-SIDE WIRE

- + Red and yellow side-by-side
- + 8 AWG full tinned OFC multi-strand power wire
- + High strand count for maximum flexibility
- + BC-5W2 marine compliant
- + 100' spool



ML-BL18-500 POWER + GROUND WIRE

► 8 GAUGE ► SIDE-BY-SIDE WIRE

- + Blue primary wire
- + 18 AWG full tinned OFC multi-strand power wire
- + BC-5W2 marine compliant
- + 500' spool



V10 RCA AUDIO CABLES

- + Dual twist for improved noise rejection
- + Ultra-flexible PVC blended jacket
- + Patented high-tolerance, compact machined metal end
- + Quad split tip for maximum contact area
- + Made with BC-5W2 marine-grade cable
- + Packaged in high-end retail box

2-CHANNEL

V10R1-5

▶ 1.5' (.45m)

V10R3

▶ 3' (.91m)

V10R6

▶ 6' (1.83m)

V10R10

▶ 10' (3.05m)

V10R14

▶ 14' (4.27m)

V10R17

▶ 17' (5.18m)

V10R20

▶ 20' (6.10m)

V10RY1

▶ Y-1 (1F-2M) ▶ 6" (.15m)

V10RY2

▶ Y-1 (1M-2F) ▶ 6" (.15m)

4-CHANNEL

V10R174

▶ 17' (5.18m)

6-CHANNEL

V10R176

▶ 17' (5.18m)

VIDEO CHANNEL

- + True 75-ohm video cable
- + Ultra-flexible PVC blended jacket
- + Patented high-tolerance, compact machined metal end
- + Quad split tip for maximum contact area
- + Made with BC-5W2 marine-grade cable
- + Packaged in high-end retail box



SINGLE CHANNEL

V10R3V

▶ 3' (.91m)

V10R9V

▶ 9' (2.74m)

V10R20V

▶ 20' (6.10m)

3.5MM TO RCA AUDIO

- + Dual twist for improved noise rejection
- + Ultra-flexible PVC blended jacket
- + Patented high-tolerance, compact machined metal end
- + Quad split tip for maximum contact area
- + Made with BC-5W2 marine-grade cable
- + Packaged in high-end retail box



2-CHANNEL

V10R35-6

▶ 6' (1.83m)



V10R176

6-CHANNEL RCA AUDIO CABLES

▶ 17' (5.18m)

- + Dual twist for improved noise rejection
- + Ultra-flexible PVC blended jacket
- + Patented high tolerance compact machined metal end
- + Quad split tip for maximum contact area
- + Fully tinned wire to the entire V10 line.
- + Made with BC-5W2 marine-grade cable
- + Packaged in high-end retail box



99-9003W WHITE BASE

99-9003B BLACK BASE

TRANSPARENT SMOKE TINTED DOOR

MARINE RADIO COVER

- + Black or white finished base
- + Magnetic latch - No push buttons
- + Magnetic seal held in place with 3M adhesive
- + Retention hinged so the door will stay open
- + No other marine cover uses this style of hinge
- + Universal design accommodates most Single-DIN head units
- + High-temp and UV resistant polycarbonate construction
- + Stainless steel mounting hardware included



99-9005 WHITE BASE

99-9005B BLACK BASE

TRANSPARENT SMOKE TINTED DOOR

MARINE RADIO COVER

- + Black or white finished base
- + Positive spring-loaded retention lock
- + Longer life, heavy-duty, low-friction hinges
- + Magnetic seal held in place with 3M adhesive
- + Dual spring support while cover is open
- + Accu-view tinted cover

BLUETOOTH® AUDIO RECEIVERS



IBR64

BLUETOOTH® MODULE ON DISPLAY

AUDIO RECEIVER

- + Remote turn-on comes on when streaming media
- + Water-resistant
- + Upgrade existing non-Bluetooth® radio
- + Automatically reconnects with the last Bluetooth® device
- + RCA output



IBR65

FLUSH MOUNT BLUETOOTH® MODULE

AUDIO RECEIVER

- + 1-1/8" mounting hole required
- + Water-resistant, aux input
- + Remote turn-on comes on when streaming media
- + Independent volume and track controls

Single-DIN radio opening



OH-DIN01

No radio opening



OH-UNI01

OH-DIN01/ OH-UNI01 OVERHEAD CONSOLE

► UNIVERSAL

- + Easy install
- + Automotive/marine grade ABS with UV
- + Single-DIN (OH-DIN01) opening or without (OH-UNI01) for customized gauge mount
- + Water-resistant when paired with the appropriate speakers/radio
- + Accommodates one radio device and two speakers
- + Paintable for custom install



TERMS

Net 30 days from date of invoice on approved accounts. Minimum order: \$50 per invoice, orders less than required minimum incur a \$20 service charge.

FREIGHT

Freight on board (F.O.B.) from point of shipment. Freight will be charged on all drop-shipment orders.

CREDIT

In order to establish a credit line with Metra, an application for credit must be submitted listing a minimum of five (5) trade references and a bank with their addresses and phone numbers and must be signed by a principal or authorized officer of the company. A credit line will be established by our credit manager and must be maintained in a current status according to our terms (net 30 days). Credit not established or revoked requires remittance with order. Returned checks are subject to a fee of \$32.00.

RESALE TAX EXEMPTION CERTIFICATE

CA, TX, KY, NJ & FL customers must provide a valid resale card before an order can be placed.

CLAIMS

Title and risk of loss passes to buyer at F.O.B. shipping point and all claims must be filed with carrier. Any discrepancies must be reported to Metra within ten (10) days of receipt of shipment.

RETURNS

All sales are final. No returns or exchanges will be allowed without prior written authorization from Metra. All returns are subject to a 20% handling charge, must be in a salable condition and must have been purchased within sixty (60) days of return request. No stock balancing permitted. Copies of invoices must be mailed in advance for any return authorization (R.A.).

LIMITED WARRANTY

Metra warrants all of its products to be free from defects in material and workmanship for a period of 1 Year from date of shipment. Metra will, at its option, repair, replace, or allow credit on any part which, in Metra's opinion, is found defective under normal use. Warranty void on any items misused, altered in any way, tampered with or serviced by anyone other than Metra Electronics. This warranty of merchantability of fitness neither assumes or authorizes any other person to assume for it, any other liability in connection with its products. In no event shall we be liable for any incidental or consequential damages, or do we assume any other liability for any incidental or consequential damages, or do we assume any other liability except provided herein.

Metra Electronics® warrants this products only to the original purchaser.

BACKORDERS

If an item is temporarily unavailable for immediate shipment, we will backorder the item & ship as soon as possible from the nearest available warehouse, unless otherwise instructed. Metra reserves the right to make changes in or deletions of products or prices without prior notice.

*Metra will not assume any responsibility for damages to person or property due to incorrect interpretation of the material in this publication. Metra is not responsible for typographical or printing errors. Reproductions of editorial or pictorial content is strictly prohibited without prior consent from Metra.



WARNING: This catalog does not advise whether a State of California Proposition 65 warning is required for a particular item of merchandise. To learn whether a particular item of merchandise requires a California Proposition 65 warning, please be sure to look up and read the particular merchandise's listing on Metra's website www.MetraOnline.com, as well as read the particular merchandise's packaging. When a California Proposition 65 warning is present on Metra's website listing for the particular merchandise, or on the particular merchandise's packaging, a compliant California Proposition 65 warning is to be provided to the purchasing California consumer prior to the sale of the particular merchandise.



facebook.com/MetraElectronics



instagram.com/MetraElectronics



youtube.com/MetraElectronics



Order Anytime Day or Night at MetraDealer.com



Download all our New Catalogs at MetraOnline.com



MetraOnline.com

MetraDealer.com

ORDERS: 386.257.2956

CORPORATE HEADQUARTERS

Metra Electronics Corporation

460 Walker Street

Holly Hill, FL 32117-2699

METRA CORPORATE: 386.257.1186

Metra 12volt & International Sales: 386.257.2956

Sales Fax: 386.258.3940