

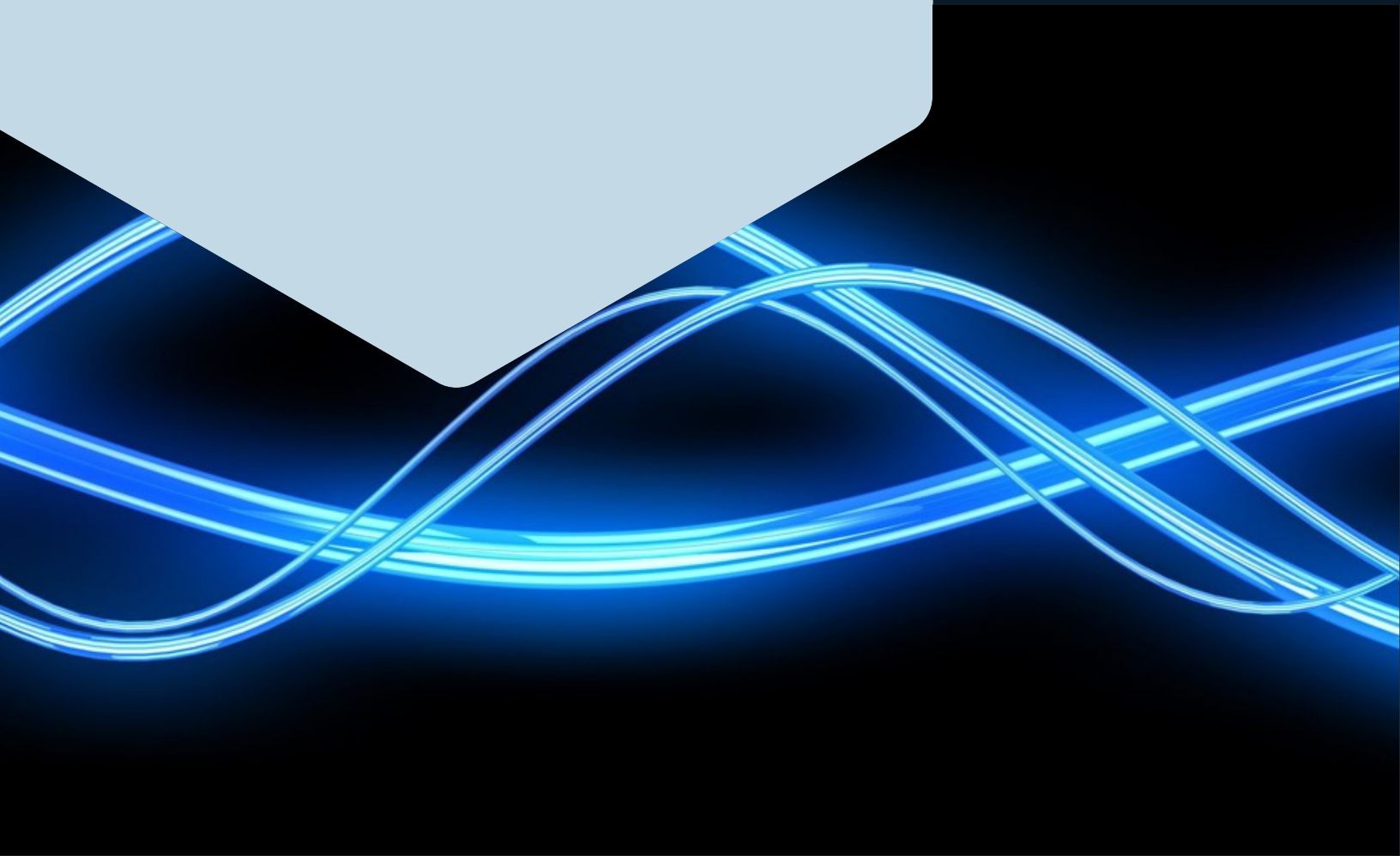
ROUSH[®]

DAMPING ADHESIVE — RA880

RA880 is a viscoelastic, pressure sensitive adhesive formulated to have high damping and adhesion performance over a wide temperature and frequency range.

www.roush.com

We're focused, we're efficient,
and we're at our best when
we're challenged to think
outside the box — critical traits
when our customers' success
depends on how quickly we
can take their visions from the
sketchpad to the marketplace.



FEATURES:

RA880 damping adhesive offers superior damping performance over a wide temperature and frequency range with peak damping achieved from 60°F to 130°F for most applications. This material is specially processed to achieve cleaner outgassing properties over generic pressure sensitive adhesives.

TYPICAL PHYSICAL PROPERTIES:

Adhesive Thickness.....1, 2, 4, 5 mil adhesive and 4, 5, 6 mil composite construction
Release Liner..... Available with variety of linear combinations
Peel Adhesion (ASTM D903)..... 6.5 lb/in
Shear Adhesion² (ASTM D3654)50 hrs
Water, Humidity and Solvent Resistance.....Excellent
Temperature Range:
Adhesion..... For best results, adhesion should be performed above 50°F
Damping @ 1000 HzExcellent damping from -40°F to 140°F
Operating³.....-50°F to 200°F

SHELF LIFE:

Two years when stored under cool, dry conditions out of direct sunlight (70°F, 50% RH)

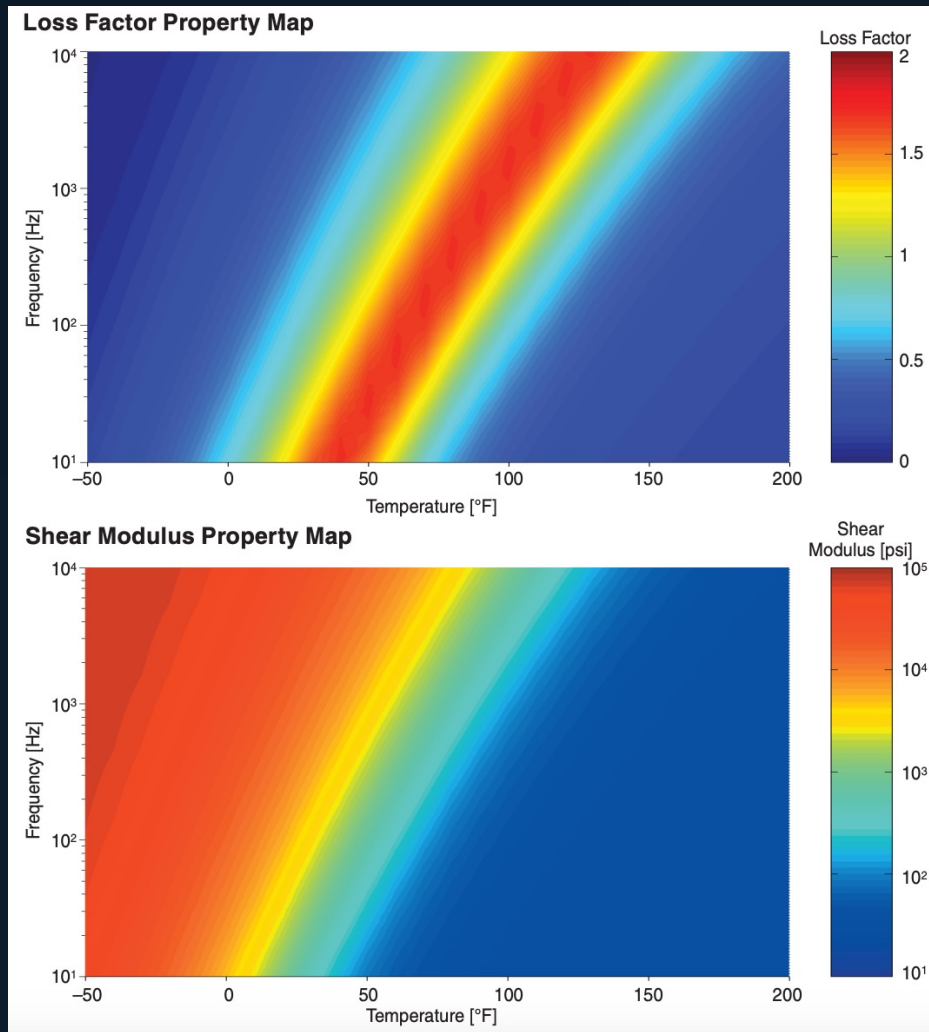
Note:

- (1) Peel Adhesion on Stainless Steel/clear polyester film, modified for 72 hours dwell time.
- (2) Shear Adhesion test on clear polyester film, per method A (1 hr dwell, 1 in², 4 lb load).
- (3) Defines temperature range material can operate within. Above 200°F, material will soften and flow due to thermoplastic nature.

ROUSH[®]

www.roush.com

RA880 — DYNAMIC MATERIAL PROPERTIES (ASTM E756 Test Results)



FULL-SERVICE NOISE AND VIBRATION CONTROL SUPPORT

Let Roush assist you with your noise and vibration control activities. We offer a full range of design, engineering, testing, and manufacturing capabilities. As an alternative to this material, we can search our database of over 3,000 materials to identify other potential material solutions. Once selected, Roush uses design and analyses to optimize the configuration of the material for your specific application. Roush provides manufacturing operations to convert this material into a finished part that can be delivered to your specifications. Roush has many worldwide partners that provide a wide array of low-cost manufacturing processes with high quality production output.

Product Performance and Suitability: All information regarding the use of Roush products identified in this datasheet is believed to be reliable by Roush, but are not product specifications and must only be used as a guide. Roush does not represent or warrant that its products are fit for a particular purpose or that they do not infringe any U.S. or foreign patents. Purchaser must independently determine the suitability of the Roush products for their particular application. Unless written otherwise in Roush's Terms and Conditions of Sale for the product, this datasheet or any verbal statements made by any other distributor, salesman or representative about the product will not be deemed to create an express warranty of any kind.

ROUSH®

www.roush.com