

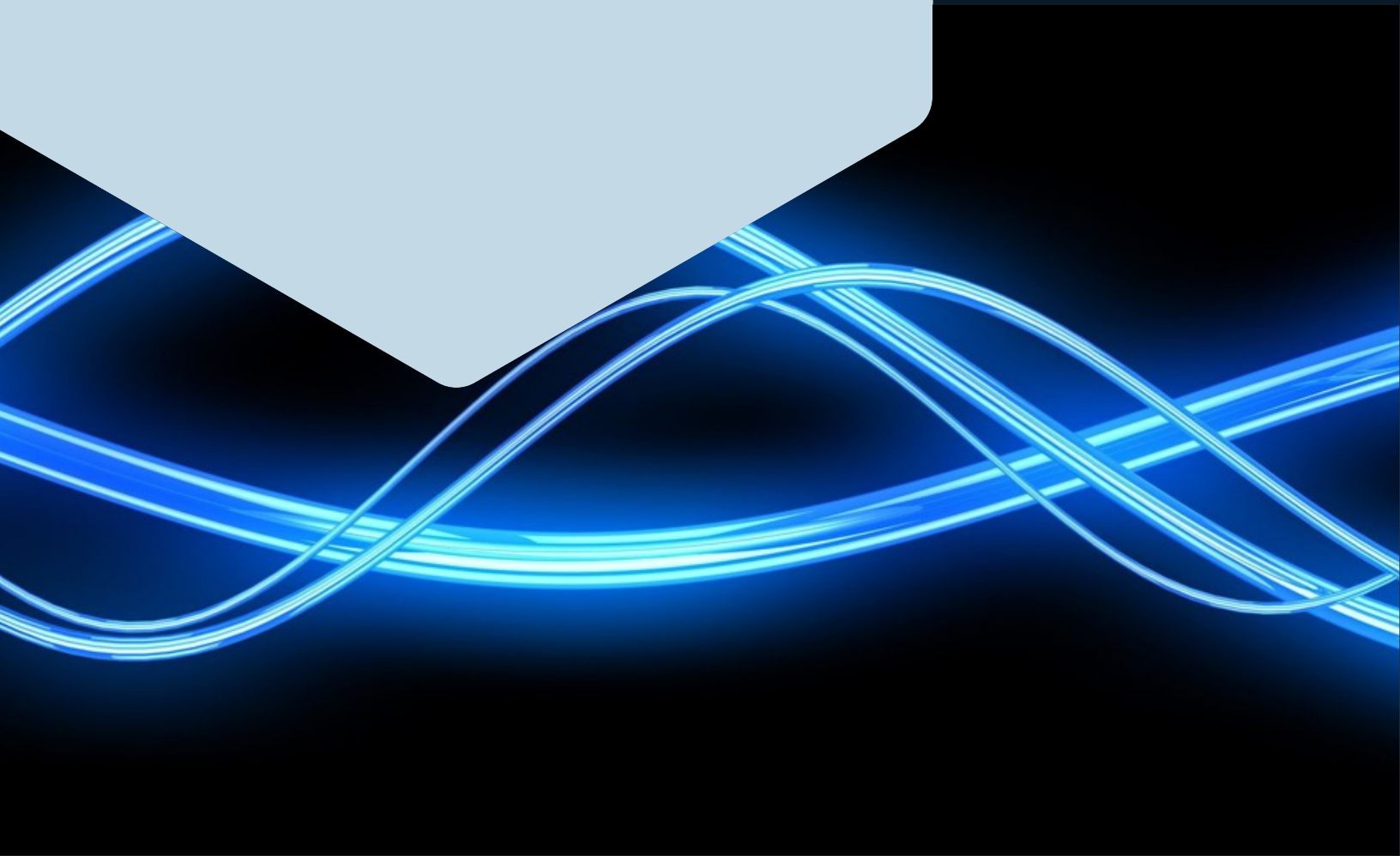
ROUSH®

ABSORPTION FOAM — RA446

RA446 is a 6 lb/ft³ polyester-based polyurethane foam formulated to have high flow resistance through the cell construction of the foam. This results in extraordinary acoustic absorbing effect at lower frequencies through structural energy dissipation in the foam.

www.roush.com

We're focused, we're efficient, and we're at our best when we're challenged to think outside the box — critical traits when our customers' success depends on how quickly we can take their visions from the sketchpad to the marketplace.



FEATURES:

RA446 is a low-cost acoustic absorption foam which provides a consistent performance. If properly designed, the use of this absorption material can significantly reduce the acoustic levels of an air space, resulting in a quieter product. RA446 meets UL94 HF-1 flammability requirements and is therefore ideally suited for use in a wide variety of product applications such as electronic and consumer product applications.

DESIGN & MANUFACTURING:

RA446 can be slit and die cut to virtually any shape and size. Easily laminated to other substrates when used in conjunction with a PSA layer, this foam offers considerable design flexibility for customized damping products.

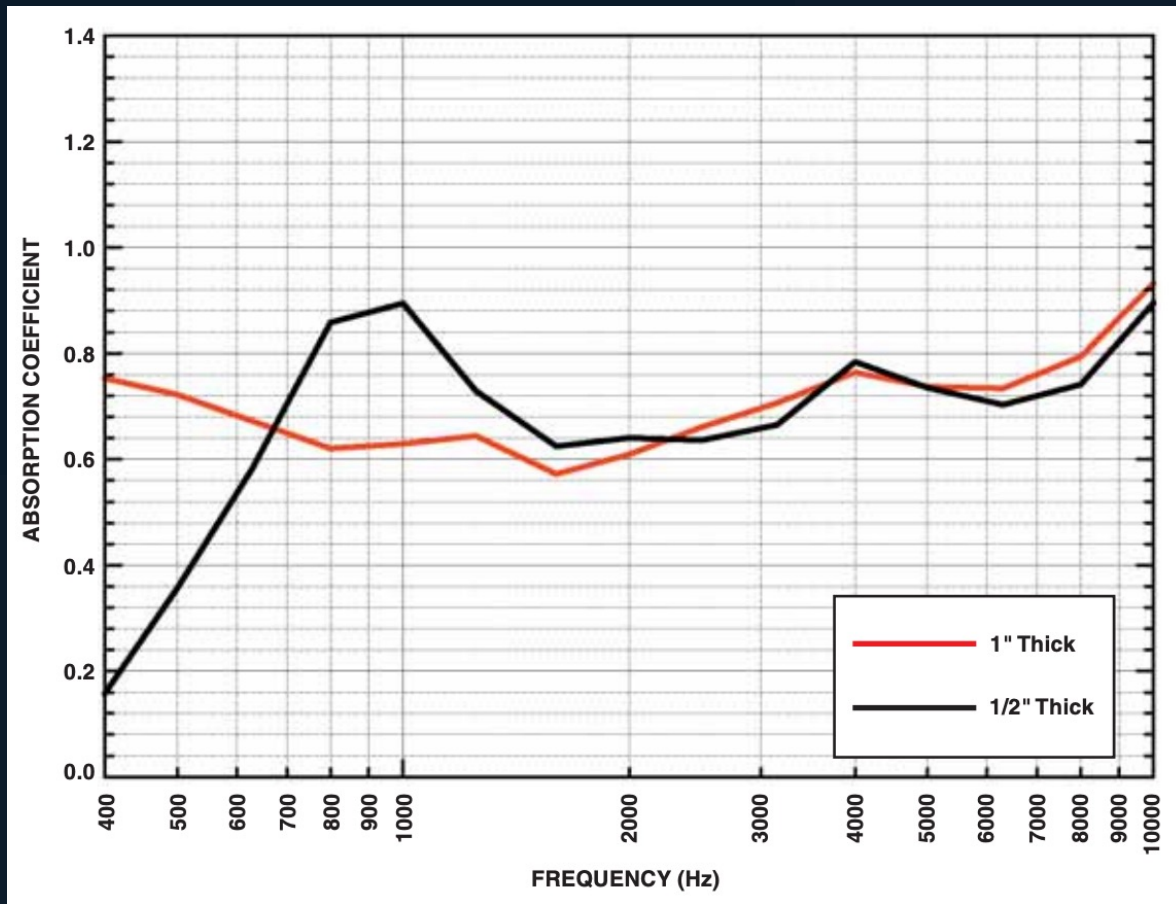
TYPICAL PHYSICAL PROPERTIES:

Material Type.....	Polyurethane Foam
Color	Gray
Pore Size	50 ppi
Density.....	6.0 lb/ft ³
Peak Absorption Coefficient.....	0.89 (0.5 thick), 0.9 (1.0 thick)
Absorption Coefficient > 0.5.....	above 600 Hz (0.5 thick) above 200 Hz (1.0 thick)
Tensile Strength	10 psi min.
Elongation.....	150% min.
Tear Resistance	1.5 lb/in min.
Compression Deflection @ 25%	0.65 psi min.
Flammability.....	UL94 HF-1 Rating

ROUSH[®]

www.roush.com

RA446 — ABSORPTION PROPERTIES (Random Incident Absorption)



FULL-SERVICE NOISE AND VIBRATION CONTROL SUPPORT

Let Roush assist you with your noise and vibration control activities. We offer a full range of design, engineering, testing, and manufacturing capabilities. As an alternative to this material, we can search our database of over 3,000 materials to identify other potential material solutions. Once selected, Roush uses design and analyses to optimize the configuration of the material for your specific application. Roush provides manufacturing operations to convert this material into a finished part that can be delivered to your specifications. Roush has many worldwide partners that provide a wide array of low-cost manufacturing processes with high quality production output.

Product Performance and Suitability: All information regarding the use of Roush products identified in this datasheet is believed to be reliable by Roush, but are not product specifications and must only be used as a guide. Roush does not represent or warrant that its products are fit for a particular purpose or that they do not infringe any U.S. or foreign patents. Purchaser must independently determine the suitability of the Roush products for their particular application. Unless written otherwise in Roush's Terms and Conditions of Sale for the product, this datasheet or any verbal statements made by any other distributor, salesman or representative about the product will not be deemed to create an express warranty of any kind.

ROUSH[®]
www.roush.com