

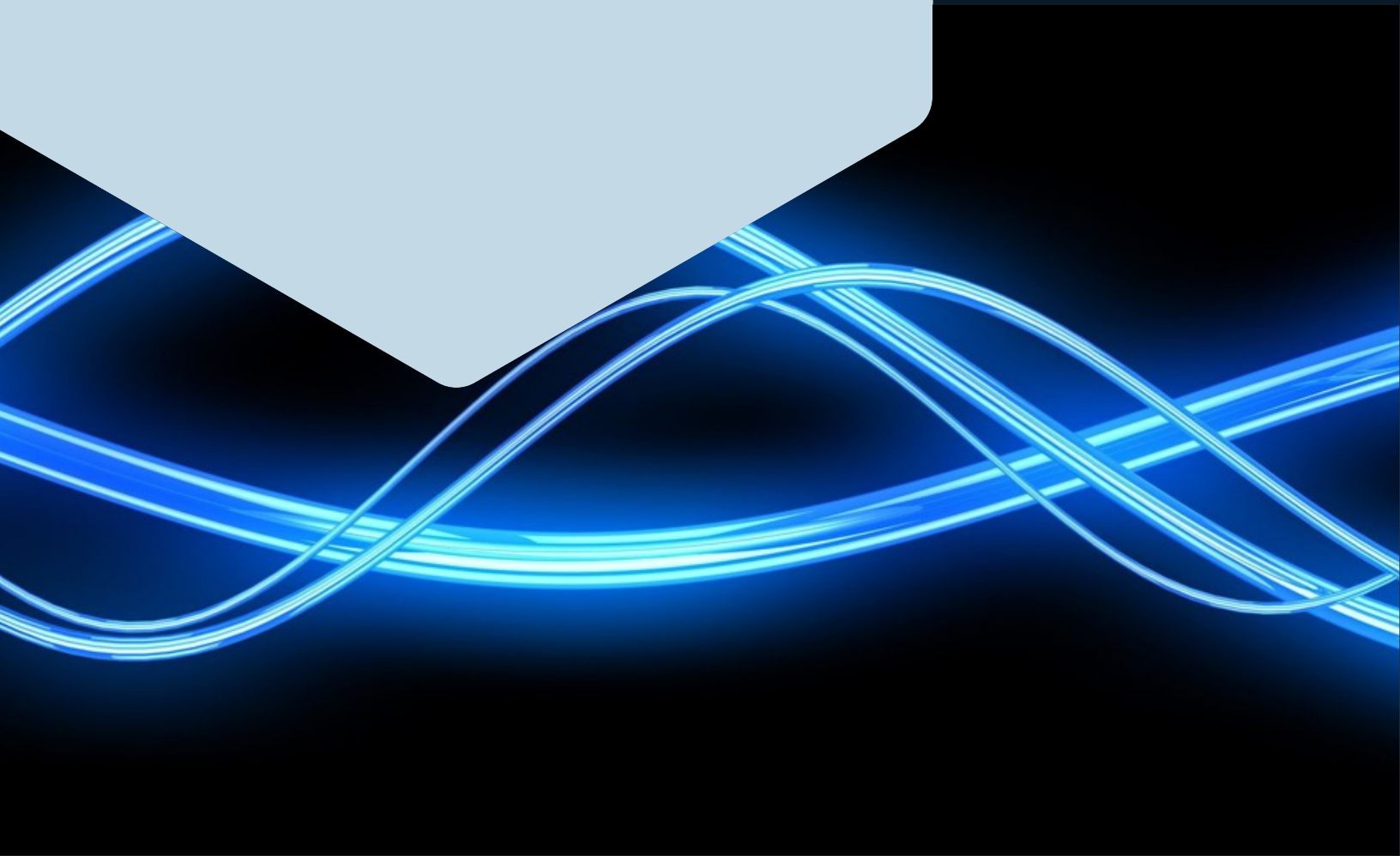
ROUSH®

DAMPING ADHESIVE — RA685

RA685 is a low outgassing permanent pressure sensitive acrylic-based adhesive designed to have high damping performance over a wide temperature and frequency range.

www.roush.com

We're focused, we're efficient, and we're at our best when we're challenged to think outside the box — critical traits when our customers' success depends on how quickly we can take their visions from the sketchpad to the marketplace.



FEATURES:

RA685 damped viscoelastic adhesive offers superior damping performance with high adhesion and cohesion properties. This makes RA685 ideal for use in the computer/hard disk drive industries, either as a laminate or constrained layer damping product.

DESIGN & MANUFACTURING:

RA442 can be slit and die cut to virtually any shape and size. Easily laminated to other substrates when used in conjunction with a PSA layer, this foam offers considerable design flexibility for customized damping products.

TYPICAL PHYSICAL PROPERTIES:

Adhesive Thickness	1 or 2 mils
Double-Sided Release Liner.....	PET 180°
Initial Peel Adhesion (PSTC-1)*.....	>2 lbs/in
Shear Adhesion @ 4 psi (PSTC-7)*	>7 days
Total Outgassing by GC/MS (ASTM D4626 Modified)*	<3 µg/cm ²
Total Ionics by Ion Chromatography*.....	<0.2 µg/cm ²
Water, Humidity and Solvent Resistance.....	Excellent
Temperature Stability.....	Excellent

*Values for 2 mils thick adhesive samples

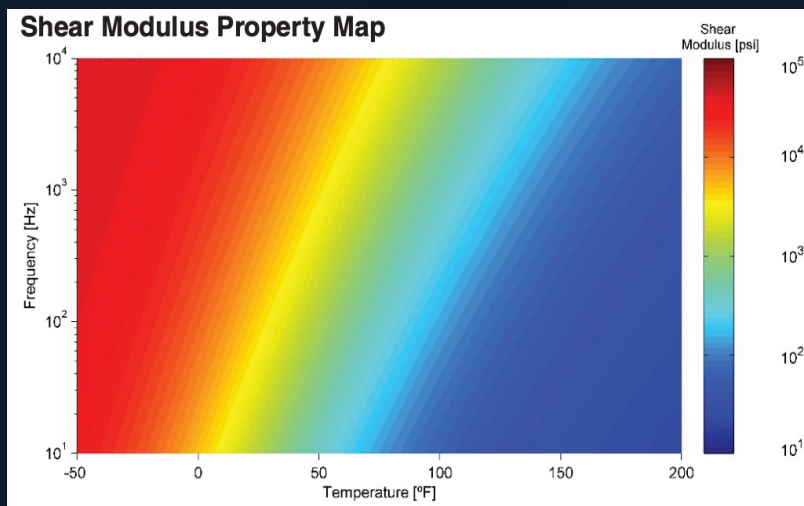
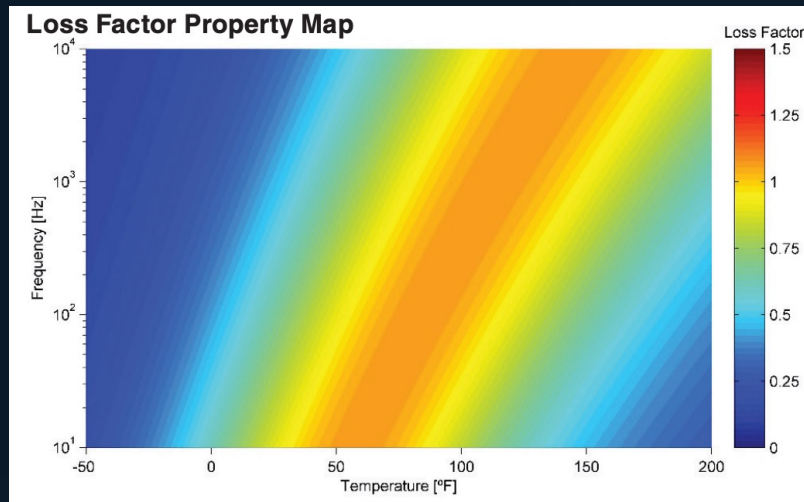
SHELF LIFE:

One year when stored under cool, dry conditions out of direct sunlight (70°F, 50% RH)

ROUSH[®]

www.roush.com

RA685 – DYNAMIC MATERIAL PROPERTIES (ASTM E756 Test Results)



FULL-SERVICE NOISE AND VIBRATION CONTROL SUPPORT

Let Roush assist you with your noise and vibration control activities. We offer a full range of design, engineering, testing, and manufacturing capabilities. As an alternative to this material, we can search our database of over 3,000 materials to identify other potential material solutions. Once selected, Roush uses design and analyses to optimize the configuration of the material for your specific application. Roush provides manufacturing operations to convert this material into a finished part that can be delivered to your specifications. Roush has many worldwide partners that provide a wide array of low-cost manufacturing processes with high quality production output.

Product Performance and Suitability: All information regarding the use of Roush products identified in this datasheet is believed to be reliable by Roush, but are not product specifications and must only be used as a guide. Roush does not represent or warrant that its products are fit for a particular purpose or that they do not infringe any U.S. or foreign patents. Purchaser must independently determine the suitability of the Roush products for their particular application. Unless written otherwise in Roush's Terms and Conditions of Sale for the product, this datasheet or any verbal statements made by any other distributor, salesman or representative about the product will not be deemed to create an express warranty of any kind.

ROUSH[®]
www.roush.com