

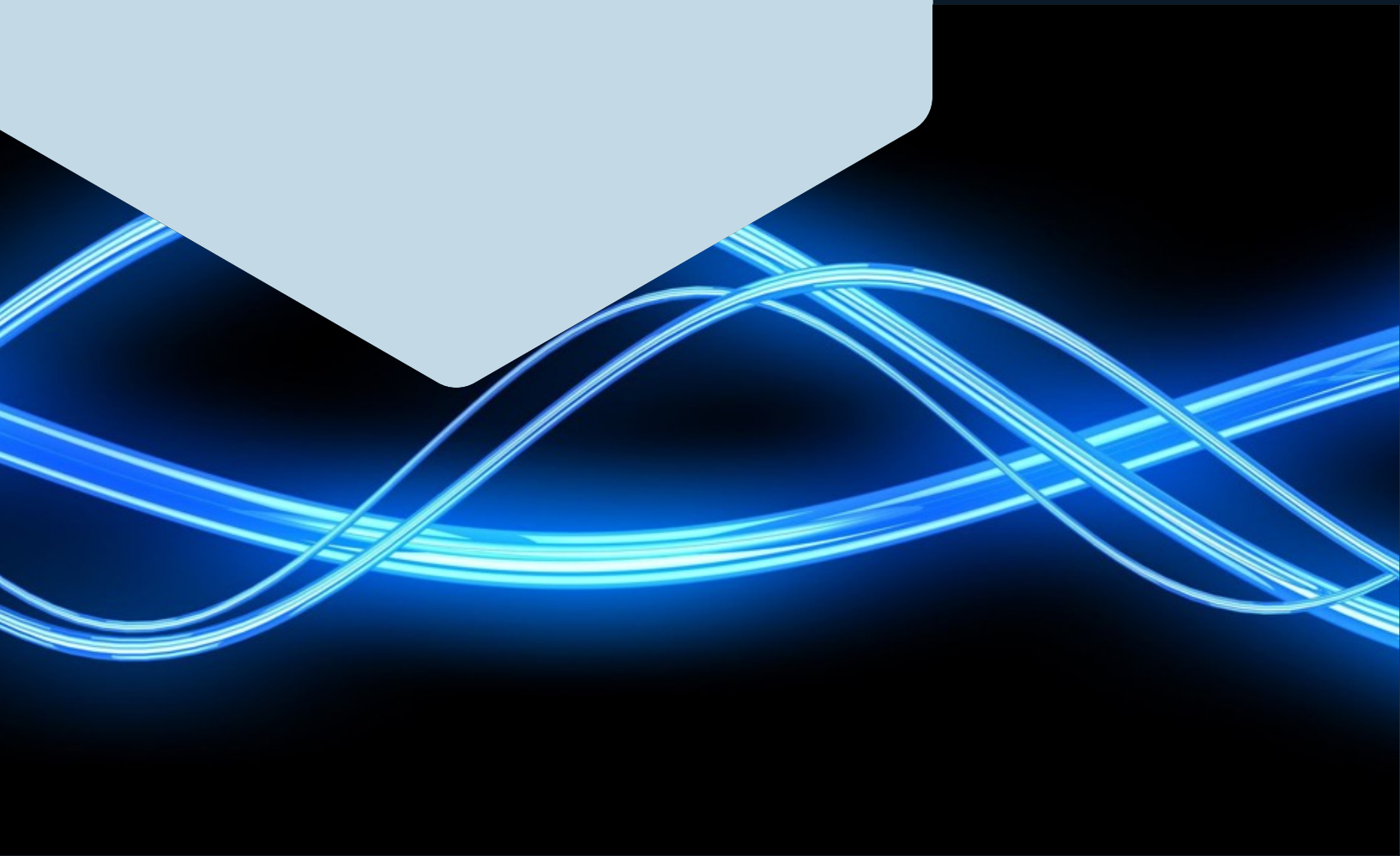
# ROUSH®

## DAMPING FOAM — RA260-XM

RA260-XM is closed-cell foam specifically formulated for sophisticated industrial and automotive applications. RA260-XM medium density foam exhibits very good dimensional stability, cushioning properties and vibration damping qualities.

[www.roush.com](http://www.roush.com)

We're focused, we're efficient,  
and we're at our best when  
we're challenged to think  
outside the box — critical traits  
when our customers' success  
depends on how quickly we  
can take their visions from the  
sketchpad to the marketplace.



## FEATURES:

RA260-XM is an excellent product for isolation and damping over a broad temperature range. It is totally unaffected by harsh chemicals such as gasoline, oil, hydraulic fluid, brake fluid, alcohol, and anti-freeze, as well as sulfuric acid, nitric acid, and even hydrochloric acid. It does not become brittle or exhibit loss of properties over time and temperature exposure. It is also UV and oxidation resistant.

## DESIGN & MANUFACTURING:

RA260-XM is available in 0.063" – 0.500" thicknesses at various widths and lengths.

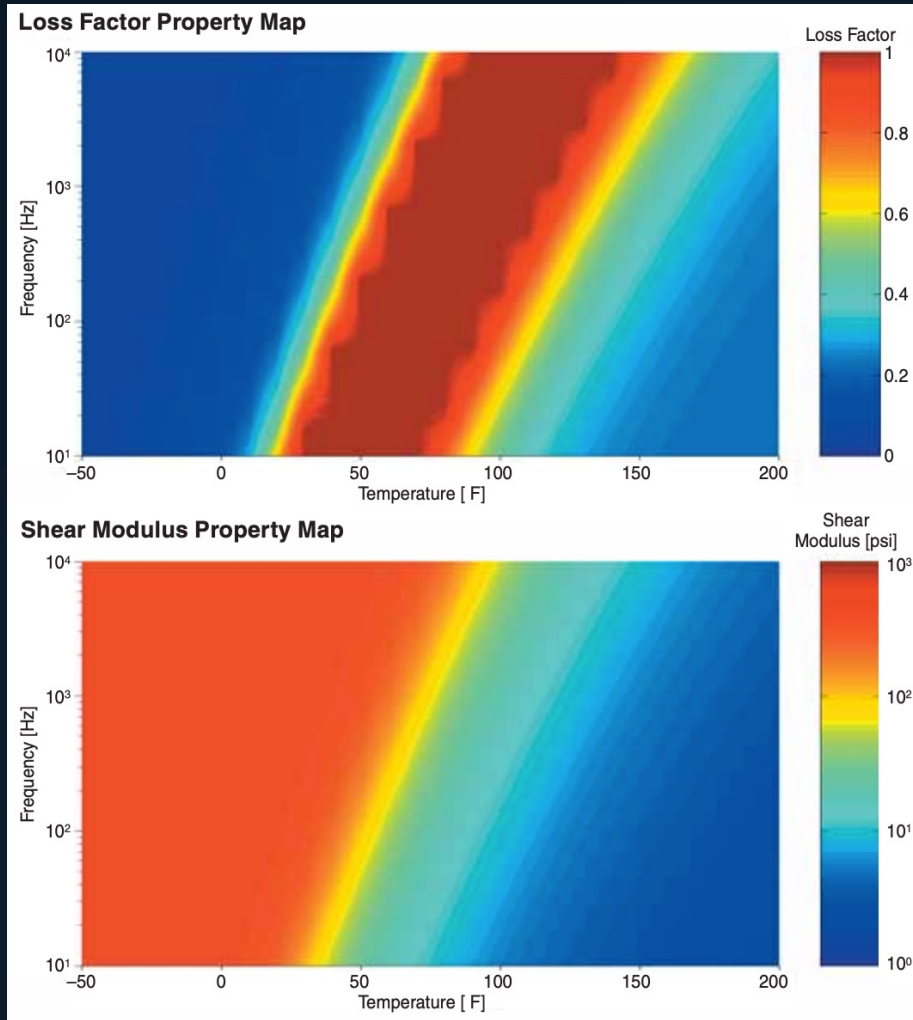
## TYPICAL PHYSICAL PROPERTIES:

Material Type.....	Polyester Blend Foam
Density (ASTM D-1667) .....	15 lb/ft <sup>3</sup>
Hardness (Shore 00) (ASTM D-2240) .....	37
Compression Deflection @ 25% (ASTM D-1056) .....	7 psi
Compression Set @ 50% (ASTM D-1056) .....	12%
Water Absorption (ASTM D-1056) .....	12%
Tensile Strength (ASTM D-412).....	130 psi
Percent Elongation (ASTM D-1056) .....	265
Recommended Service Temperature.....	-40 to 250°F
Recommended Application Temperature .....	50 to 110°F
Fungi Resistance/Oxidation Resistance/Weather Resistance.....	Excellent

**ROUSH**<sup>®</sup>

[www.roush.com](http://www.roush.com)

## RA260-XM — DYNAMIC MATERIAL PROPERTIES (Shear Resonance Test Results)



### FULL-SERVICE NOISE AND VIBRATION CONTROL SUPPORT

Let Roush assist you with your noise and vibration control activities. We offer a full range of design, engineering, testing, and manufacturing capabilities. As an alternative to this material, we can search our database of over 3,000 materials to identify other potential material solutions. Once selected, Roush uses design and analyses to optimize the configuration of the material for your specific application. Roush provides manufacturing operations to convert this material into a finished part that can be delivered to your specifications. Roush has many worldwide partners that provide a wide array of low-cost manufacturing processes with high quality production output.

**Product Performance and Suitability:** All information regarding the use of Roush products identified in this datasheet is believed to be reliable by Roush, but are not product specifications and must only be used as a guide. Roush does not represent or warrant that its products are fit for a particular purpose or that they do not infringe any U.S. or foreign patents. Purchaser must independently determine the suitability of the Roush products for their particular application. Unless written otherwise in Roush's Terms and Conditions of Sale for the product, this datasheet or any verbal statements made by any other distributor, salesman or representative about the product will not be deemed to create an express warranty of any kind.

**ROUSH**<sup>®</sup>  
[www.roush.com](http://www.roush.com)