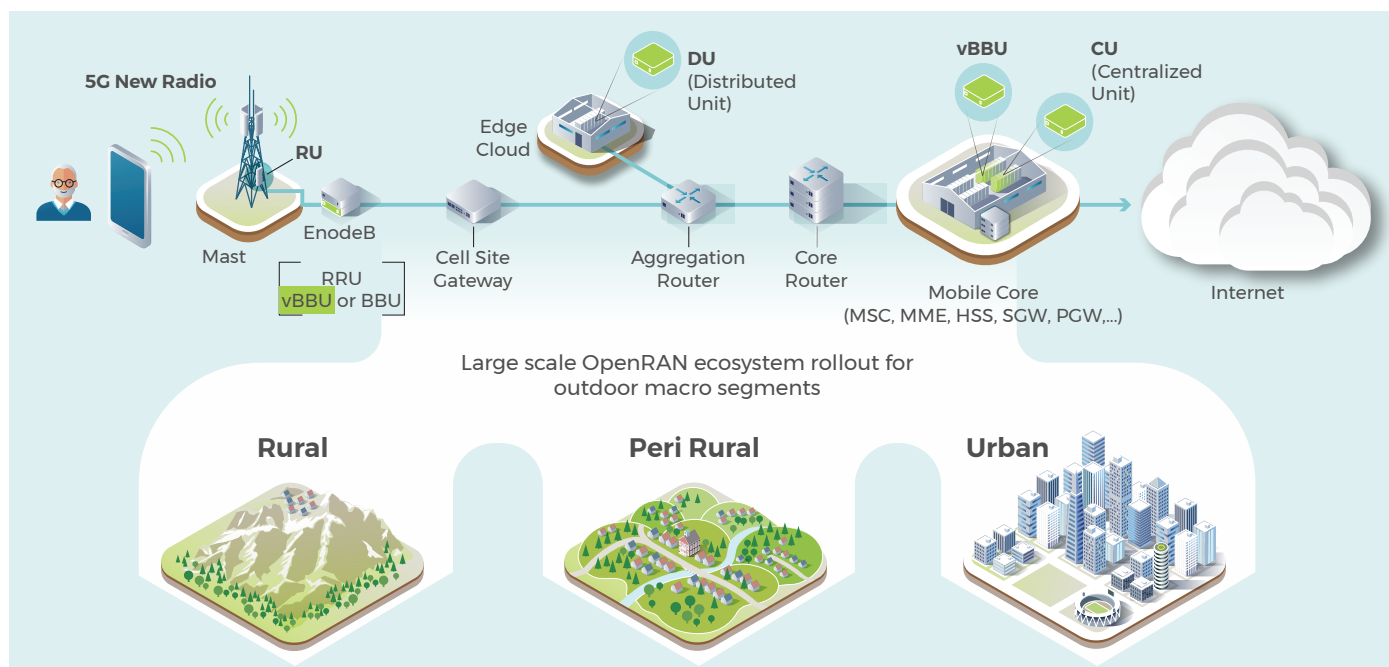


OpenRAN Outdoor Macro



The sub-group addresses the challenges of large scale, outdoor OpenRAN deployments by defining requirements, aggregating technology solutions and developing playbooks for accelerating OpenRAN deployments.



Why Outdoor Macro?

Traditional outdoor RAN systems built on proprietary technology and interfaces leads to a fragmented ecosystem where components from different vendors cannot interoperate with each other. Yet, no single vendor can provide best of breed solution to address a wide range of deployment scenarios from high-density high capacity urban to rural. A flexible, cost-effective disaggregated outdoor solution based on open interfaces would greatly facilitate large scale deployment to enhance mobile network capacity and coverage.

At a glance

The group will develop requirement documents for various outdoor macro segments, 1. rural 2. peri-urban and 3. urban. Key focus areas and deliverables include:

- **Reference architectures for RAN** including the components CU, DU and RU.
- **APIs and interfaces for multi-vendors'**

interoperability based on industry specifications.

- **Playbooks and test reports.**

Developments

- **Identified top priority use cases** based on input from TPG, Ooredoo, Vodafone, and Smartfren.
- **Baselined Technical requirements for RU, DU & CU** against all use cases - 1. Rural 2. Semi urban 3. Urban.
- **Initiating solution build and testing phase.**

What next

- **Learn more about Telecom Infra Project**
telecominfraproject.com
- **Join the OpenRAN Project Group:**
telecominfraproject.com/openran/ to learn and contribute
- **Contact us** with questions or comments:
OpenRAN-info@telecominfraproject.com